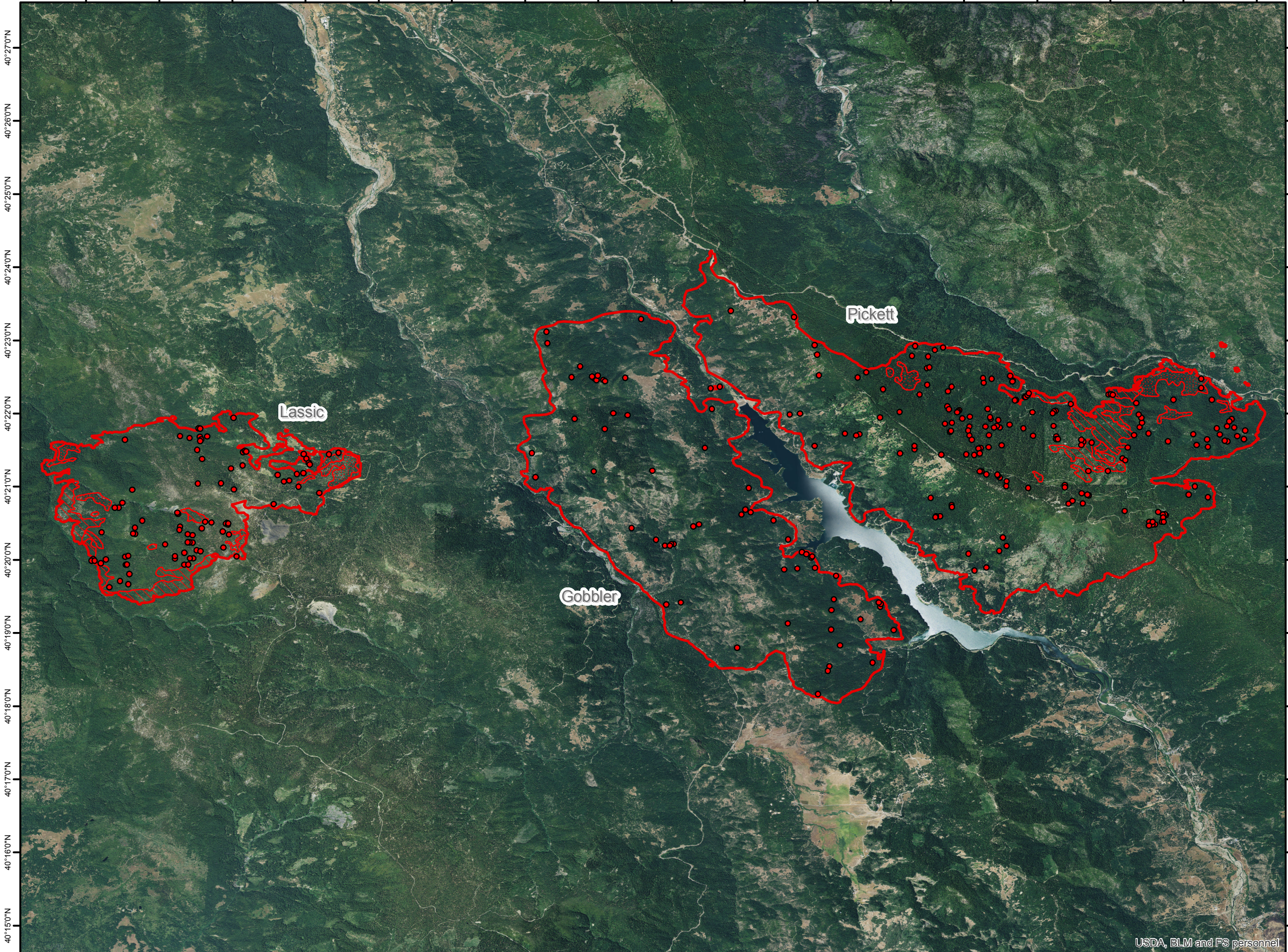






123°35'0"W 123°34'0"W 123°33'0"W 123°32'0"W 123°31'0"W 123°30'0"W 123°29'0"W 123°28'0"W 123°27'0"W 123°26'0"W 123°25'0"W 123°24'0"W 123°23'0"W 123°22'0"W 123°21'0"W 123°20'0"W 123°19'0"W



40°27'0"N  
40°26'0"N  
40°25'0"N  
40°24'0"N  
40°23'0"N  
40°22'0"N  
40°21'0"N  
40°20'0"N  
40°19'0"N  
40°18'0"N  
40°17'0"N  
40°16'0"N  
40°15'0"N

# Mad River Complex Fire Infrared Heat Sources CA-SRF-001433 1:95,000

-  Heat Perimeter
-  Intense Heat Areas
-  Scattered Heat Areas
-  Isolated Heat Sources

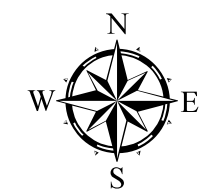
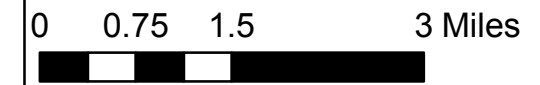
GCS North American 1983

Pickett

Lassic

Gobbler

Lassic - 3,968 acres  
Gobbler - 8,282 acres  
Pickett - 10,557 acres



IR Interpreter: Brian Monroe  
IR interpreted acres: 22,807  
Date: 08/16/2015  
Time received the Image: 2125 hrs

USDA, BLM and FS personnel

123°35'0"W 123°34'0"W 123°33'0"W 123°32'0"W 123°31'0"W 123°30'0"W 123°29'0"W 123°28'0"W 123°27'0"W 123°26'0"W 123°25'0"W 123°24'0"W 123°23'0"W 123°22'0"W 123°21'0"W 123°20'0"W 123°19'0"W