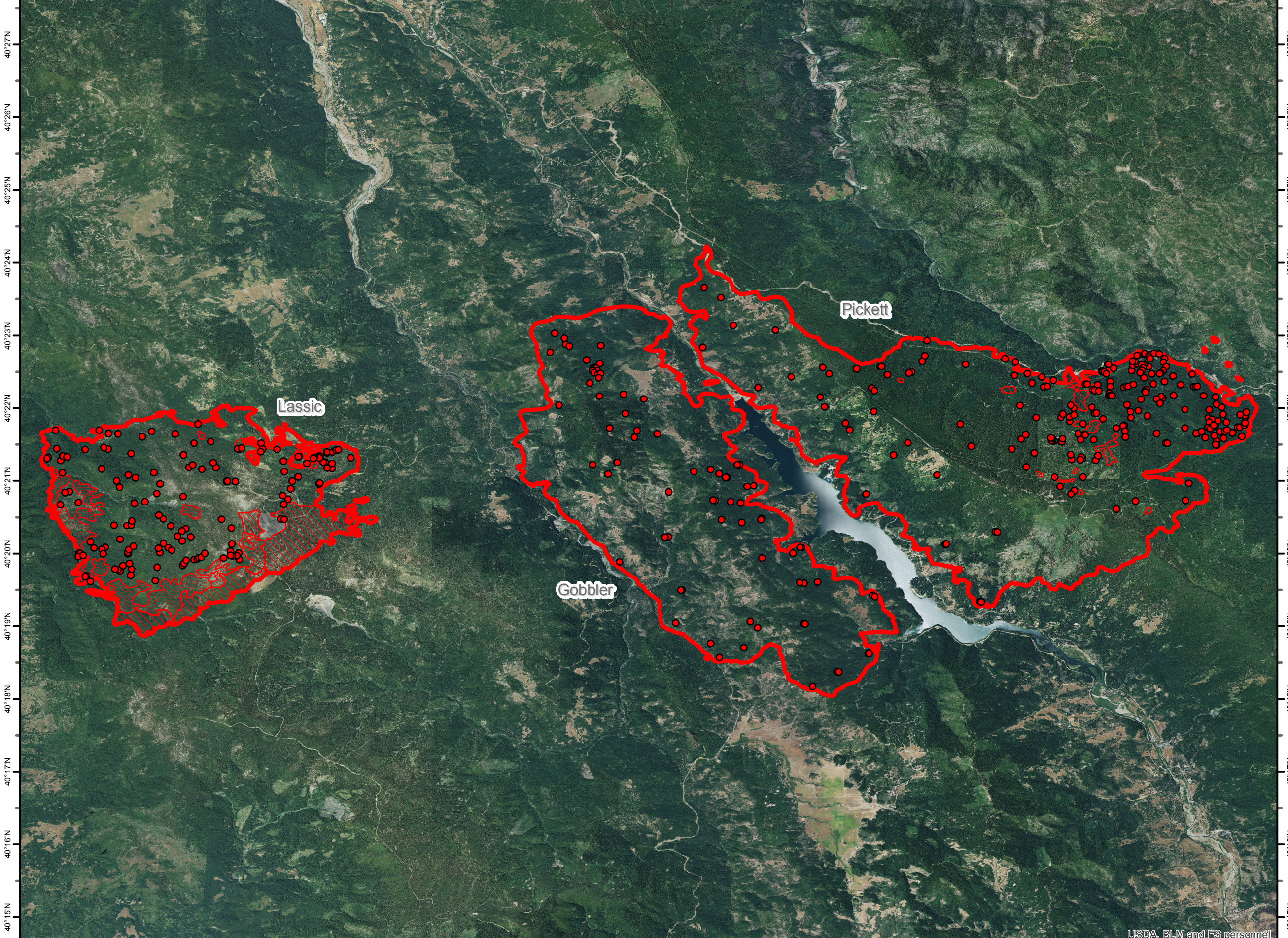






123°35'W 123°34'W 123°33'W 123°32'W 123°31'W 123°30'W 123°29'W 123°28'W 123°27'W 123°26'W 123°25'W 123°24'W 123°23'W 123°22'W 123°21'W 123°20'W 123°19'W



123°35'W 123°34'W 123°33'W 123°32'W 123°31'W 123°30'W 123°29'W 123°28'W 123°27'W 123°26'W 123°25'W 123°24'W 123°23'W 123°22'W 123°21'W 123°20'W 123°19'W

Mad River Complex Fire Infrared Heat Sources CA-SRF-001433 1:95,000

-  Heat Perimeter
-  Intense Heat Areas
-  Scattered Heat Areas
-  Isolated Heat Sources

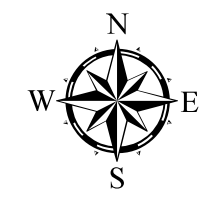
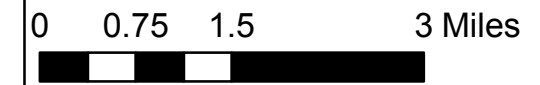
GCS North American 1983

Pickett

Lassic

Gobbler

Lassic - 5,627 acres
Gobbler - 8,282 acres
Pickett - 10,922 acres



IR Interpreter: Brian Monroe
IR interpreted acres: 24,831
Date: 08/18/2015
Time received the Image: 0212 hrs

USDA, BLM and FS personnel