

August 3, 2015

# WFDSS - FSPRO PROBABILITY: SRF MAD RIVER COMPLEX (2015-CASRF-001433)

08/03 - 7 DAYS - 90m Res; 1500 Fire Sim

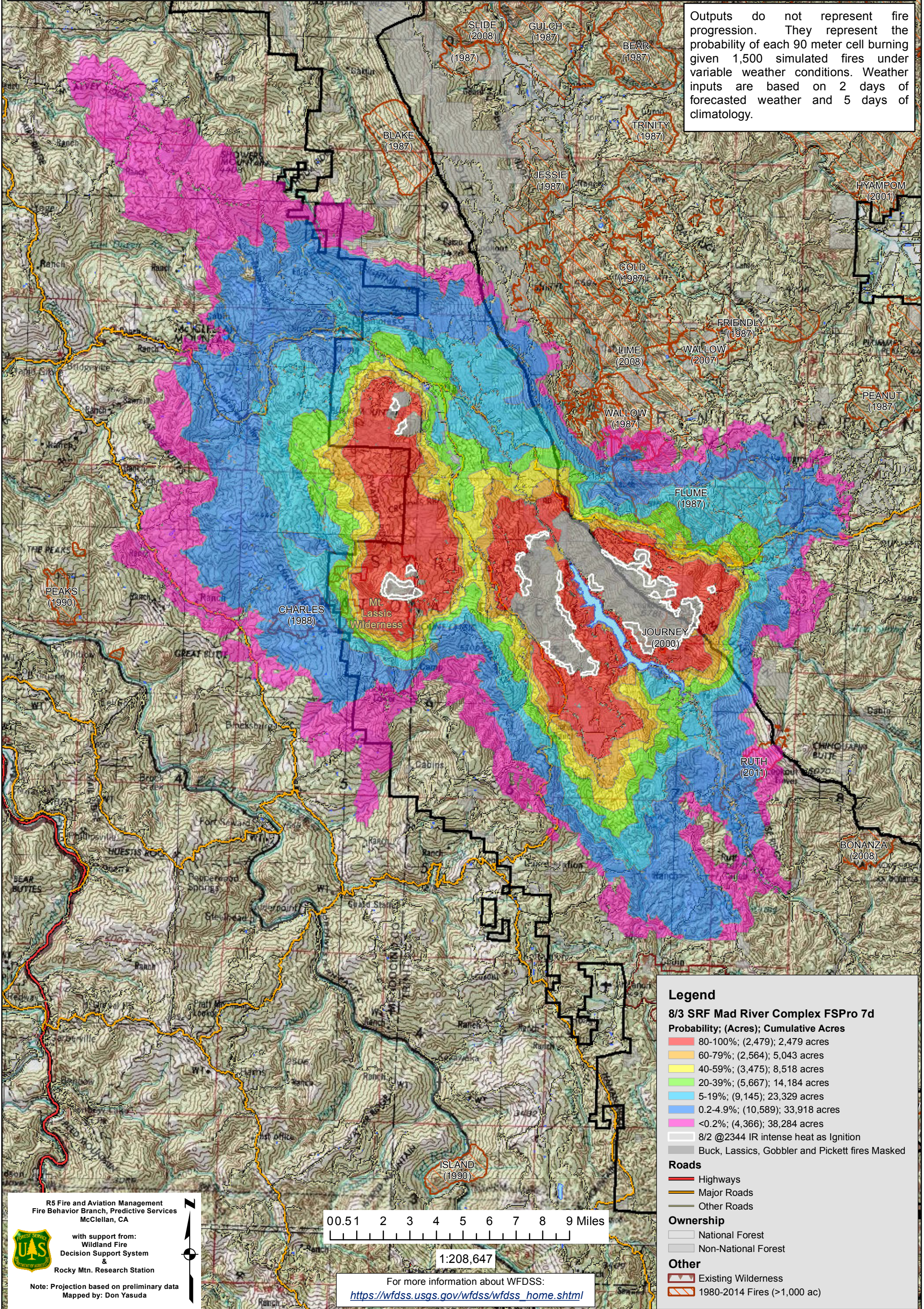
ERC: 40507 - MAD RIVER (11.1 miles); WINDS: 40507 - MAD RIVER (11.1 miles)

File: 8.3 7 day FSPro; Analyst: Larry Hood

BUCKHORN (2008) PIGEON (2006)

Notes: 7 day FSPro analysis for 8/3 to 8/9. Masks burned areas of Buck, Lassics, Gobbler and Pickett fires, 13,087 acres as non-burnable. Ignition file used: 8/2 2344 IR intense heat. No barrier files used. **Expect spread into low probability surfaces early in the analysis period due to extreme**

Outputs do not represent fire progression. They represent the probability of each 90 meter cell burning given 1,500 simulated fires under variable weather conditions. Weather inputs are based on 2 days of forecasted weather and 5 days of climatology.



**Legend**

**8/3 SRF Mad River Complex FSPro 7d**

**Probability; (Acres); Cumulative Acres**

- 80-100%; (2,479); 2,479 acres
- 60-79%; (2,564); 5,043 acres
- 40-59%; (3,475); 8,518 acres
- 20-39%; (5,667); 14,184 acres
- 5-19%; (9,145); 23,329 acres
- 0.2-4.9%; (10,589); 33,918 acres
- <0.2%; (4,366); 38,284 acres

- 8/2 @2344 IR intense heat as Ignition
- Buck, Lassics, Gobbler and Pickett fires Masked

**Roads**

- Highways
- Major Roads
- Other Roads

**Ownership**

- National Forest
- Non-National Forest

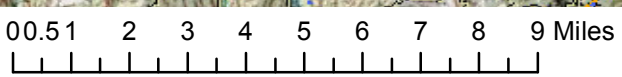
**Other**

- Existing Wilderness
- 1980-2014 Fires (>1,000 ac)

R5 Fire and Aviation Management  
Fire Behavior Branch, Predictive Services  
McClellan, CA

with support from:  
Wildland Fire  
Decision Support System  
&  
Rocky Mtn. Research Station

Note: Projection based on preliminary data  
Mapped by: Don Yasuda



1:208,647

For more information about WFDSS:  
[https://wfdss.usgs.gov/wfdss/wfdss\\_home.shtml](https://wfdss.usgs.gov/wfdss/wfdss_home.shtml)