

August 8, 2015

WFDSS - FSPRO PROBABILITY: SRF MAD RIVER COMPLEX (2015-CASRF-001433)

08/08 - 7 DAYS - 90m Res; 2000 Fire Sim

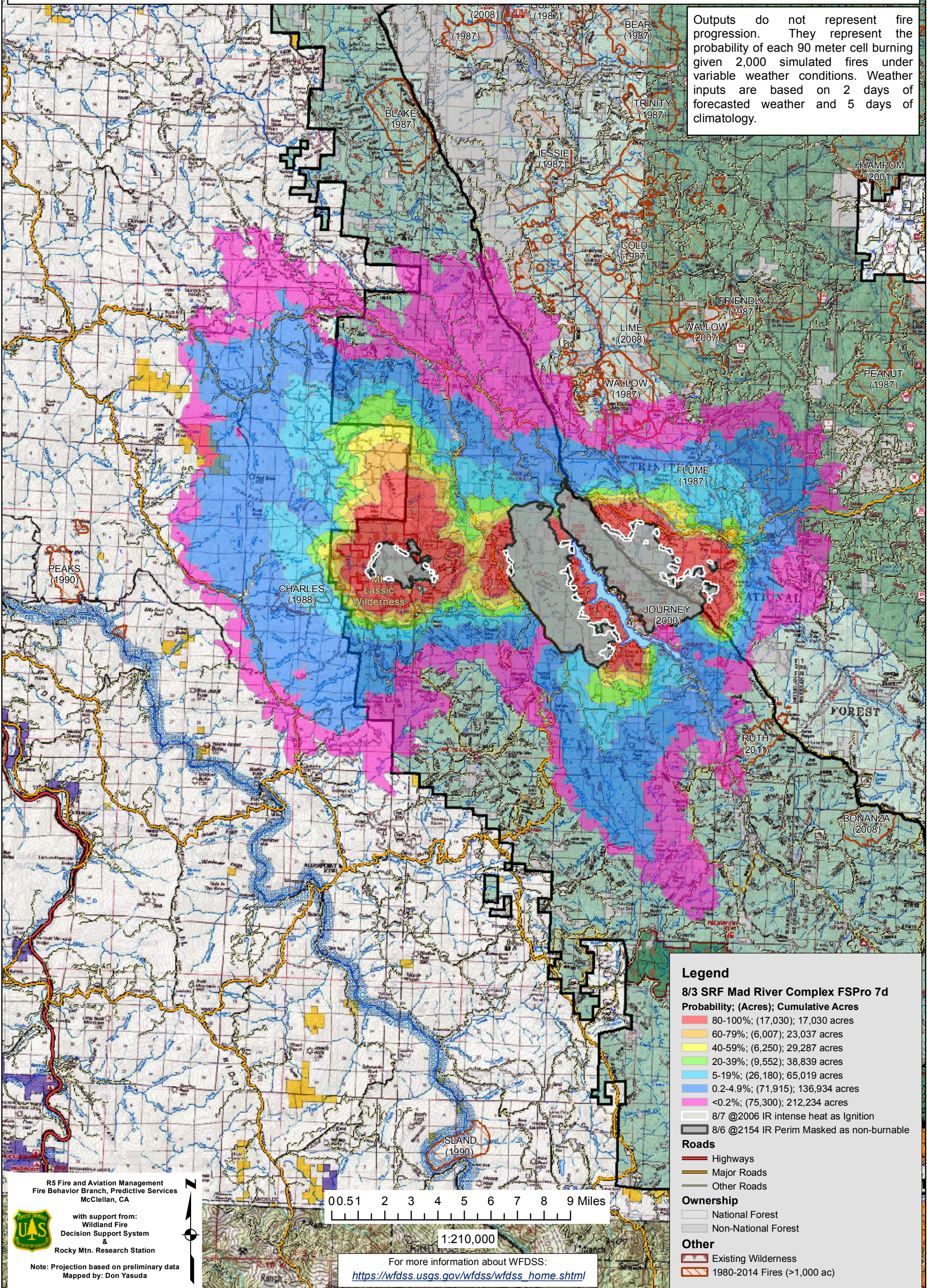
ERC: 40507 - MAD RIVER (11.1 miles); WINDS: 40507 - MAD RIVER (11.1 miles)

File: 8.8 Updated 7 day FSPro: Larry Hood

Trinity Alps PIGEON Wilderness (2006)
BUCKHORN (2003)

Notes: Updated 7 day FSPro analysis for 8/8 to 8/14. Masks 8/6 2154 IR perimeters of Lassics, Gobbler and Pickett fires as non-burnable and uses 8/7 2006 IR intense heat for ignition file to capture areas of fire showing recent growth. No barrier files used and model assumes no suppression action. Expect spread into low probability surfaces early in the analysis period due to extreme drought conditions and/or forecasted increase in SW winds.

Outputs do not represent fire progression. They represent the probability of each 90 meter cell burning given 2,000 simulated fires under variable weather conditions. Weather inputs are based on 2 days of forecasted weather and 5 days of climatology.



Legend

8/3 SRF Mad River Complex FSPro 7d

Probability; (Acres); Cumulative Acres

80-100%; (17,030); 17,030 acres

60-79%; (6,007); 23,037 acres

40-59%; (6,250); 29,287 acres

20-39%; (9,552); 38,839 acres

5-19%; (26,180); 65,019 acres

0.2-4.9%; (71,915); 136,934 acres

<0.2%; (75,300); 212,234 acres

8/7 @2006 IR intense heat as Ignition

8/6 @2154 IR Perim Masked as non-burnable

Roads

Highways

Major Roads

Other Roads

Ownership

National Forest

Non-National Forest

Other

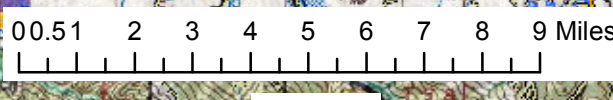
Existing Wilderness

1980-2014 Fires (>1,000 ac)

R5 Fire and Aviation Management
Fire Behavior Branch, Predictive Services
McClellan, CA

with support from:
Wildland Fire
Decision Support System
&
Rocky Mtn. Research Station

Note: Projection based on preliminary data
Mapped by: Don Yasuda



1:210,000

For more information about WFDSS:
https://wfdss.usgs.gov/wfdss/wfdss_home.shtml