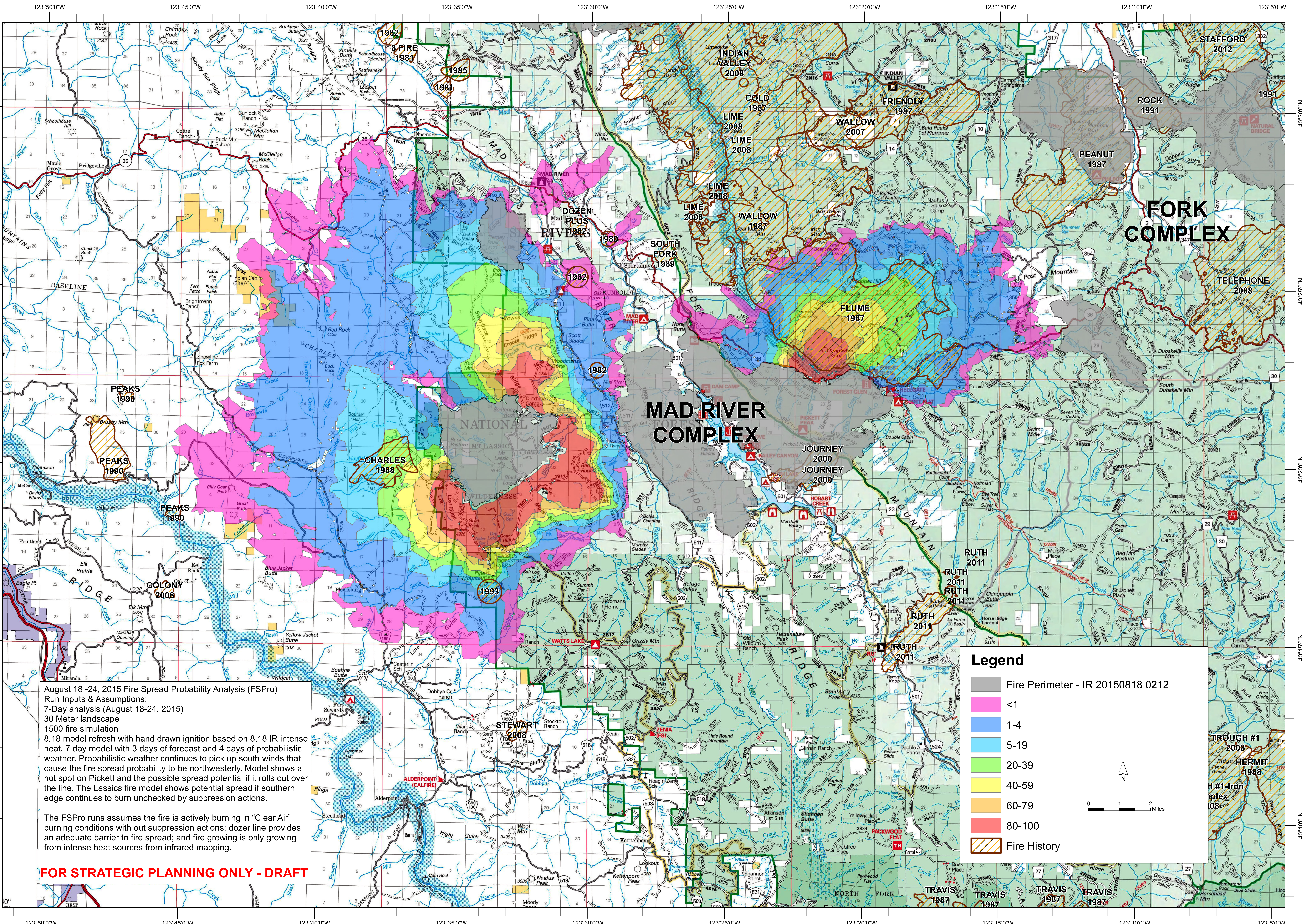




Mad River Complex

FSPro Run
August 18, 2015



August 18-24, 2015 Fire Spread Probability Analysis (FSPro) Run Inputs & Assumptions:
 7-Day analysis (August 18-24, 2015)
 30 Meter landscape
 1500 fire simulation
 8.18 model refresh with hand drawn ignition based on 8.18 IR intense heat. 7 day model with 3 days of forecast and 4 days of probabilistic weather. Probabilistic weather continues to pick up south winds that cause the fire spread probability to be northwesterly. Model shows a hot spot on Pickett and the possible spread potential if it rolls over the line. The Lassics fire model shows potential spread if southern edge continues to burn unchecked by suppression actions.

The FSPro runs assumes the fire is actively burning in "Clear Air" burning conditions with out suppression actions; dozer line provides an adequate barrier to fire spread; and fire growing is only growing from intense heat sources from infrared mapping.

FOR STRATEGIC PLANNING ONLY - DRAFT

Legend

- Fire Perimeter - IR 20150818 0212
- <1
- 1-4
- 5-19
- 20-39
- 40-59
- 60-79
- 80-100
- Fire History

0 1 2 Miles