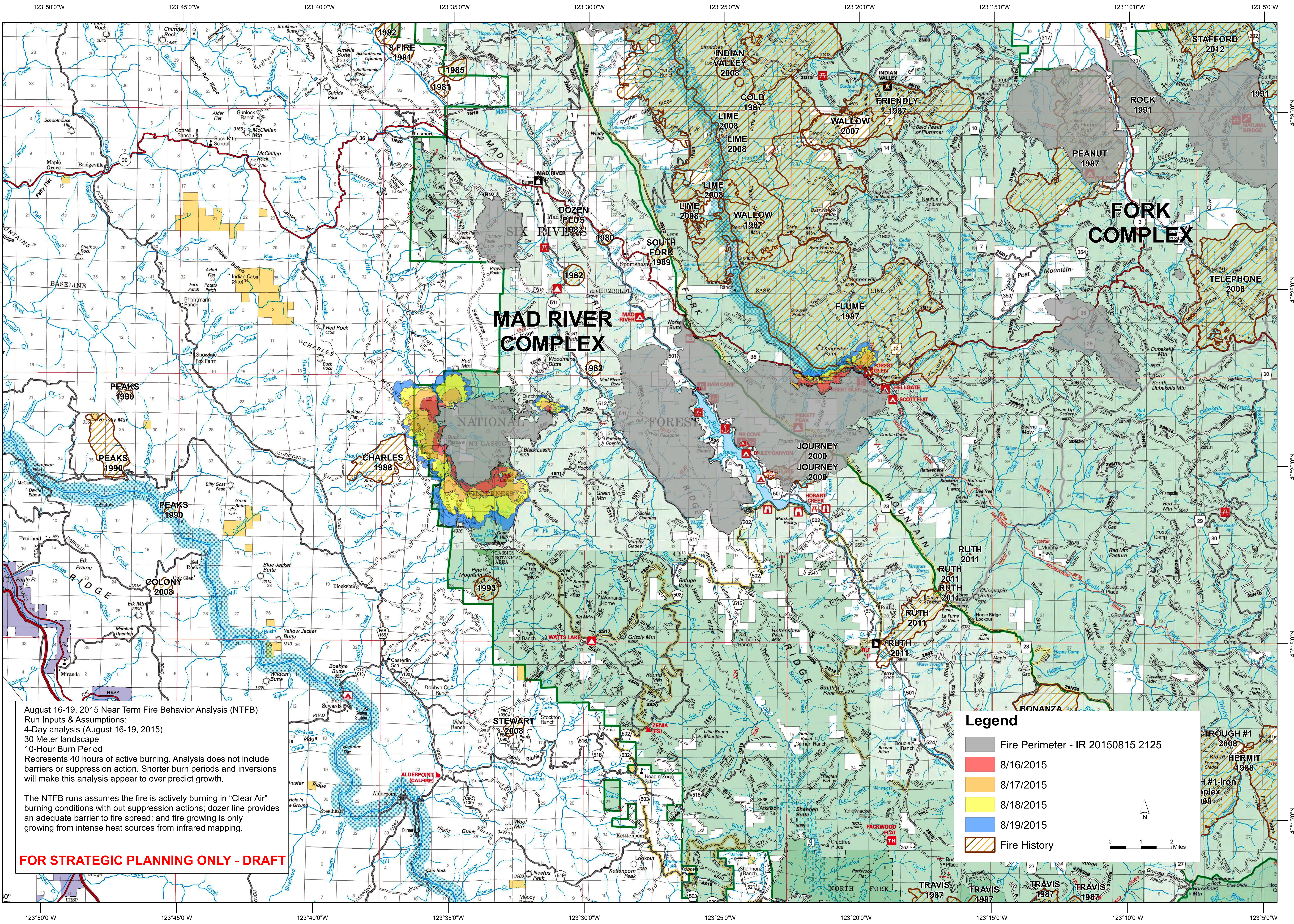




Mad River Complex

Near Term Fire Behavior August 16, 2015



August 16-19, 2015 Near Term Fire Behavior Analysis (NTFB)
 Run Inputs & Assumptions:
 4-Day analysis (August 16-19, 2015)
 30 Meter landscape
 10-Hour Burn Period
 Represents 40 hours of active burning. Analysis does not include barriers or suppression action. Shorter burn periods and inversions will make this analysis appear to over predict growth.

The NTFB runs assumes the fire is actively burning in "Clear Air" burning conditions with out suppression actions; dozer line provides an adequate barrier to fire spread; and fire growing is only growing from intense heat sources from infrared mapping.

FOR STRATEGIC PLANNING ONLY - DRAFT

Legend

- Fire Perimeter - IR 20150815 2125
- 8/16/2015
- 8/17/2015
- 8/18/2015
- 8/19/2015
- Fire History

0 1 2 Miles