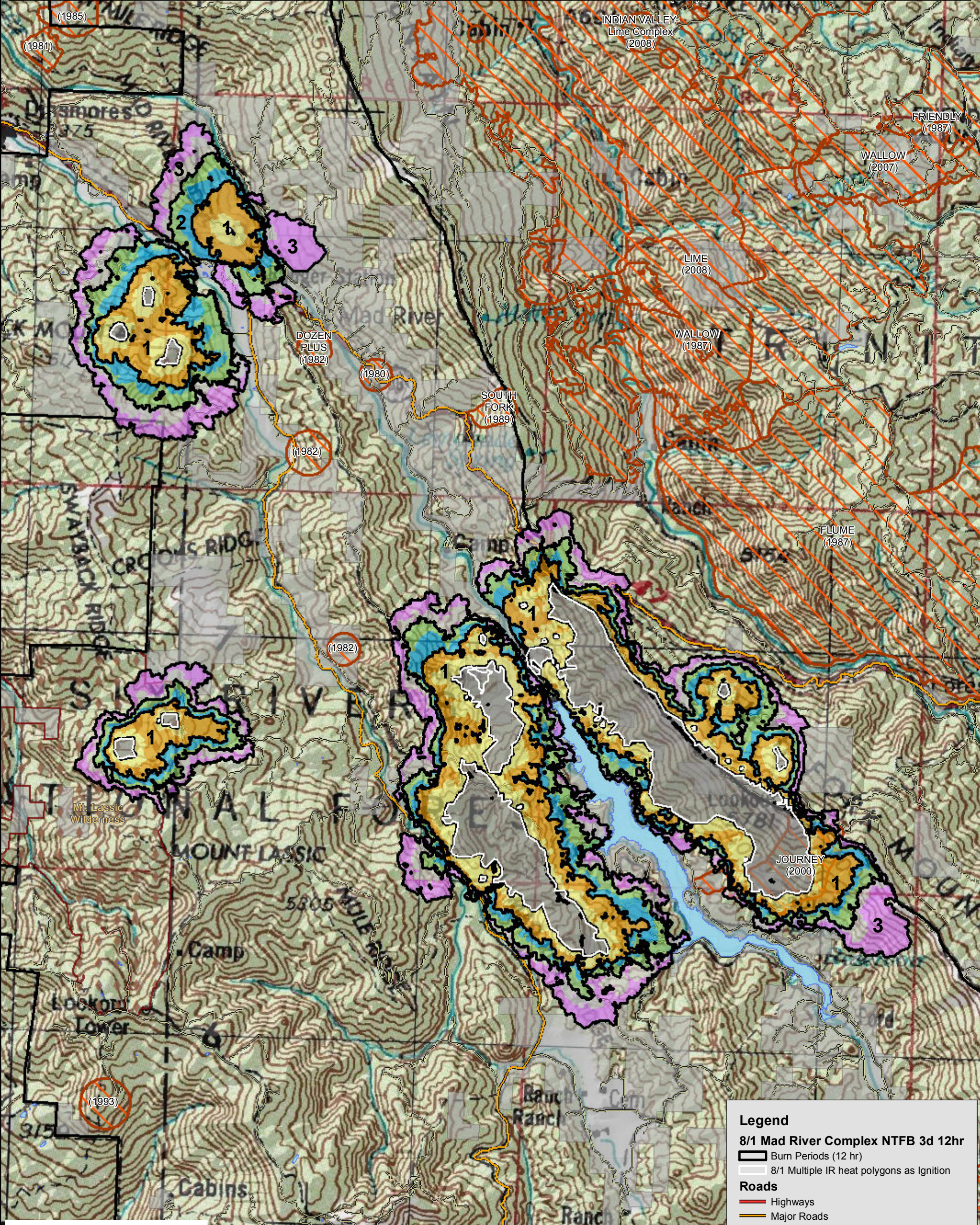


WFDSS - NEAR TERM FIRE BEHAVIOR ANALYSIS: SRF Mad River Complex (2015-CASRF-001433)

08/01 - 3 DAYS - 12hr Burn Periods (0900-2100) - 30m Res
Fuel Moisture & Wx: 40507 - MAD RIVER (11.1 miles)
File: 8.1 3 day Near Term Fire Behavior; Analyst: Larry Hood

Note: 8/1 Initial 3 day Near Term analysis. Uses 7.31 2009 IR perimeter data for approx. 8 fires plus spot fires near 2 larger perimeters by Ruth Lake. All fires are within the Mad River Complex planning area. Model assumes no suppression action. May under predict spread due to extreme drought conditions. Colors showing 6 hour time steps.

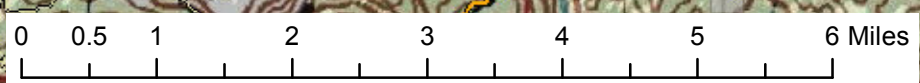
Fire spread may be under predicted due to extreme drought conditions.



R5 Fire and Aviation Management
Fire Behavior Branch, Predictive Services
McClellan, CA

with support from:
Wildland Fire
Decision Support System &
Rocky Mtn. Research Station

Note: Projection based on preliminary data
Mapped by: Don Yasuda



1:90,000

For more information about WFDSS:
https://wfdss.usgs.gov/wfdss/wfdss_home.shtml

Legend

8/1 Mad River Complex NTFB 3d 12hr

- Burn Periods (12 hr)
- 8/1 Multiple IR heat polygons as Ignition

Roads

- Highways
- Major Roads
- Other Roads

Ownership

- National Forest
- Non-National Forest

Other

- 1980-2014 Fires (>100 ac)
- Existing Wilderness