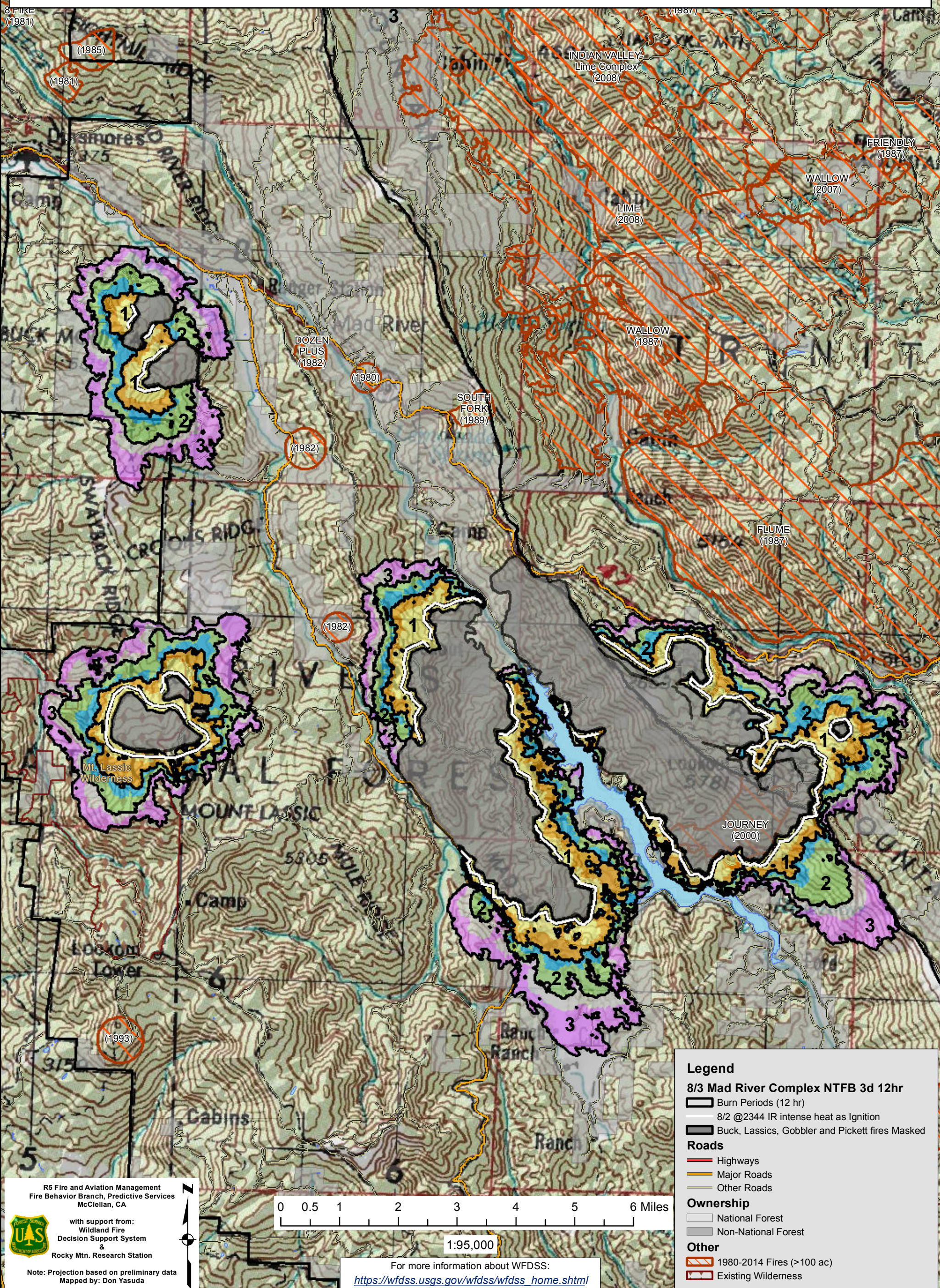


# WFDSS - NEAR TERM FIRE BEHAVIOR ANALYSIS: SRF Mad River Complex (2015-CASRF-001433)

08/03 - 3 DAYS - 12hr Burn Periods (0900-2100) - 30m Res  
Fuel Moisture & Wx: 40507 - MAD RIVER (11.1 miles)

Note: Updated 3 day Near Term Analysis for 8/3 to 8/5. Masks burned areas of Buck, Lassics, Gobbler and Pickett fires, 13,087 acres as non-burnable. Ignition file based on 8/2 2344 IR intense heat. No barrier files used and model assumes no suppression action. **May under estimate spread due to extreme drought conditions or increased atmospheric instability.** Colors showing 6 hour time steps.



**Legend**

**8/3 Mad River Complex NTFB 3d 12hr**

- Burn Periods (12 hr)
- 8/2 @2344 IR intense heat as Ignition
- Buck, Lassics, Gobbler and Pickett fires Masked

**Roads**

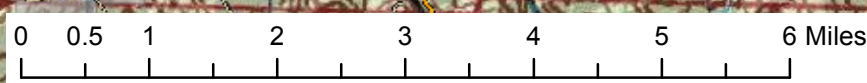
- Highways
- Major Roads
- Other Roads

**Ownership**

- National Forest
- Non-National Forest

**Other**

- 1980-2014 Fires (>100 ac)
- Existing Wilderness



1:95,000

For more information about WFDSS:  
[https://wfdss.usgs.gov/wfdss/wfdss\\_home.shtml](https://wfdss.usgs.gov/wfdss/wfdss_home.shtml)

R5 Fire and Aviation Management  
Fire Behavior Branch, Predictive Services  
McClellan, CA

with support from:  
Wildland Fire  
Decision Support System &  
Rocky Mtn. Research Station

Note: Projection based on preliminary data  
Mapped by: Don Yasuda