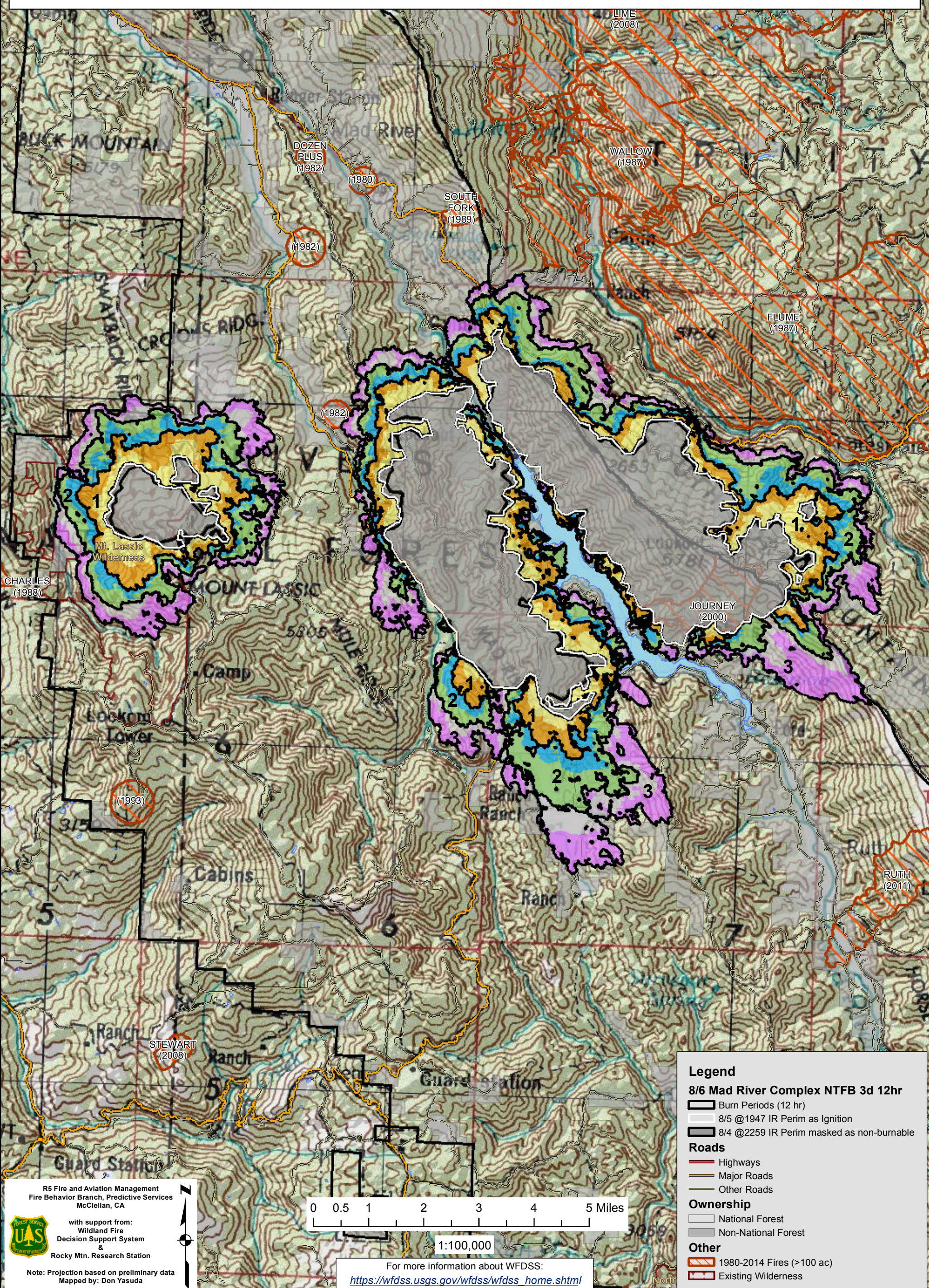


August 06, 2015

# WFDSS - NEAR TERM FIRE BEHAVIOR ANALYSIS: SRF Mad River Complex (2015-CASRF-001433)

08/06 - 3 DAYS - 12hr Burn Periods (0900-2100) - 30m Res  
Fuel Moisture & Wx: 40507 - MAD RIVER (11.1 miles)

Note: Updated 3 day Near Term Analysis for 8/6 to 8/8. Models Pickett, Gobbler, Lasser and Swayback fires. 8/4 2259 IR perimeter masked as non-burnable and 8/5 1947 IR perimeter used for ignition file to capture areas of fire showing growth. No barrier files used and model assumes no suppression action. **May under estimate spread due to extreme drought conditions and/or increased forecasted instability and associated thunderstorm downdrafts.** Colors showing 6 hour time steps.



**Legend**

**8/6 Mad River Complex NTFB 3d 12hr**

- Burn Periods (12 hr)
- 8/5 @1947 IR Perim as Ignition
- 8/4 @2259 IR Perim masked as non-burnable

**Roads**

- Highways
- Major Roads
- Other Roads

**Ownership**

- National Forest
- Non-National Forest


**Other**

- 1980-2014 Fires (>100 ac)
- Existing Wilderness

R5 Fire and Aviation Management  
Fire Behavior Branch, Predictive Services  
McClellan, CA

with support from:  
Wildland Fire  
Decision Support System &  
Rocky Mtn. Research Station

Note: Projection based on preliminary data  
Mapped by: Don Yasuda



0 0.5 1 2 3 4 5 Miles

1:100,000

For more information about WFDSS:  
[https://wfdss.usgs.gov/wfdss/wfdss\\_home.shtml](https://wfdss.usgs.gov/wfdss/wfdss_home.shtml)