

August 08, 2015

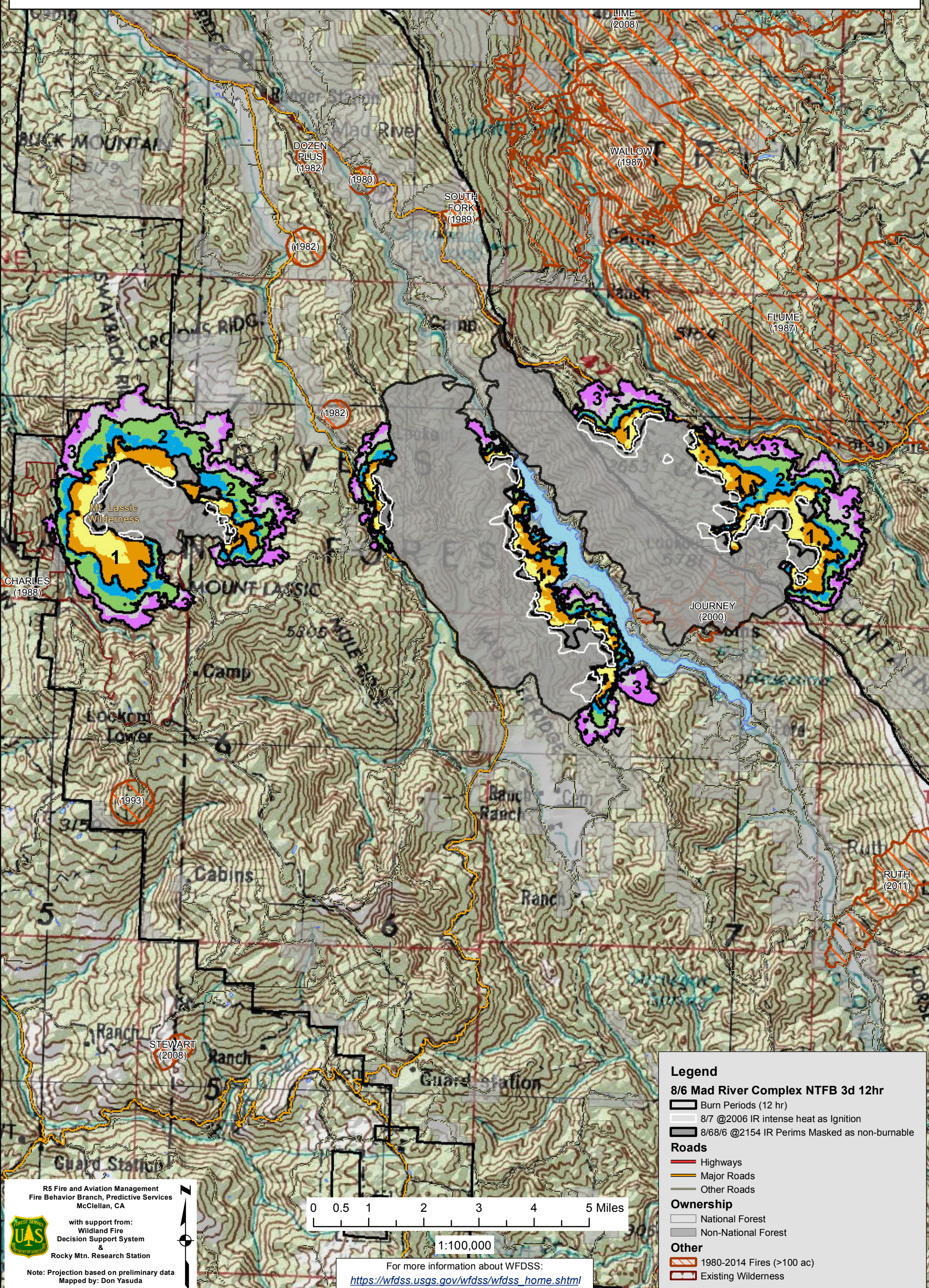
WFDSS - NEAR TERM FIRE BEHAVIOR ANALYSIS: SRF Mad River Complex (2015-CASRF-001433)

08/08 - 3 DAYS - 12hr Burn Periods (0900-2100) - 30m Res

Fuel Moisture & Wx: 40507 - MAD RIVER (11.1 miles)

File: 8.8 to 8.10 3 day Near Term Fire Behavior; Analyst: Larry Hood

Note: Updated 3 day Near Term fire behavior analysis for 8/8 to 8/10. Masks 8/6 2154 IR perimeters of Lassic, Gobbler and Pickett fires as non-burnable and uses 8/7 2006 IR intense heat for ignition file to capture areas of fire showing recent growth. No barrier files used and model assumes no suppression action. **May under predict spread due to extreme drought conditions and/or forecasted increase in SW winds.** Colors showing 6 hour time steps.



CHARLES (1988)

Mount Lassic Wilderness

MOUNT LASSIC

5805 MILE HIGH

Lockton Tower

Cabins

STEWART (2008)

Guard Station

JOURNEY (2000)

RUTH (2011)

LIME (2008)

WALLOW (1987)

FLUME (1987)

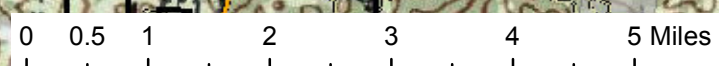
DOZEN PLUS (1982)

SOUTH FORK (1989)

(1982)

(1982)

(1993)



1:100,000

Legend

8/6 Mad River Complex NTFB 3d 12hr

- Burn Periods (12 hr)
- 8/7 @2006 IR intense heat as Ignition
- 8/6/6 @2154 IR Perims Masked as non-burnable

Roads

- Highways
- Major Roads
- Other Roads

Ownership

- National Forest
- Non-National Forest

Other

- 1980-2014 Fires (>100 ac)
- Existing Wilderness

R5 Fire and Aviation Management
Fire Behavior Branch, Predictive Services
McClellan, CA

with support from:
Wildland Fire
Decision Support System
&
Rocky Mtn. Research Station

Note: Projection based on preliminary data
Mapped by: Don Yasuda

For more information about WFDSS:
https://wfdss.usgs.gov/wfdss/wfdss_home.shtml