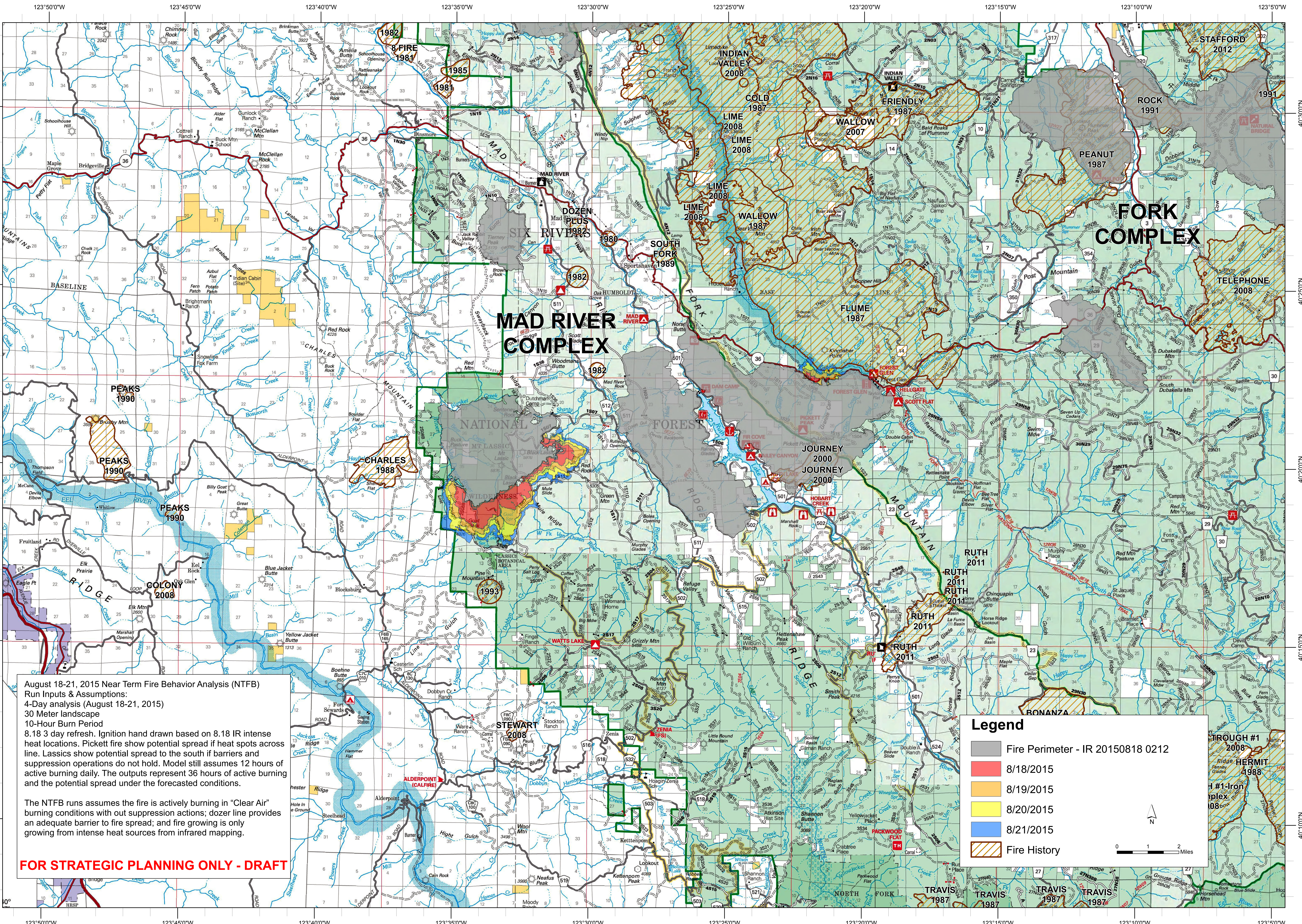




Mad River Complex

Near Term Fire Behavior August 18, 2015



August 18-21, 2015 Near Term Fire Behavior Analysis (NTFB)
 Run Inputs & Assumptions:
 4-Day analysis (August 18-21, 2015)
 30 Meter landscape
 10-Hour Burn Period
 8,18 3 day refresh. Ignition hand drawn based on 8.18 IR intense heat locations. Pickett fire show potential spread if heat spots across line. Lassics show potential spread to the south if barriers and suppression operations do not hold. Model still assumes 12 hours of active burning daily. The outputs represent 36 hours of active burning and the potential spread under the forecasted conditions.

The NTFB runs assumes the fire is actively burning in "Clear Air" burning conditions with out suppression actions; dozer line provides an adequate barrier to fire spread; and fire growing is only growing from intense heat sources from infrared mapping.

FOR STRATEGIC PLANNING ONLY - DRAFT