

Repair Map

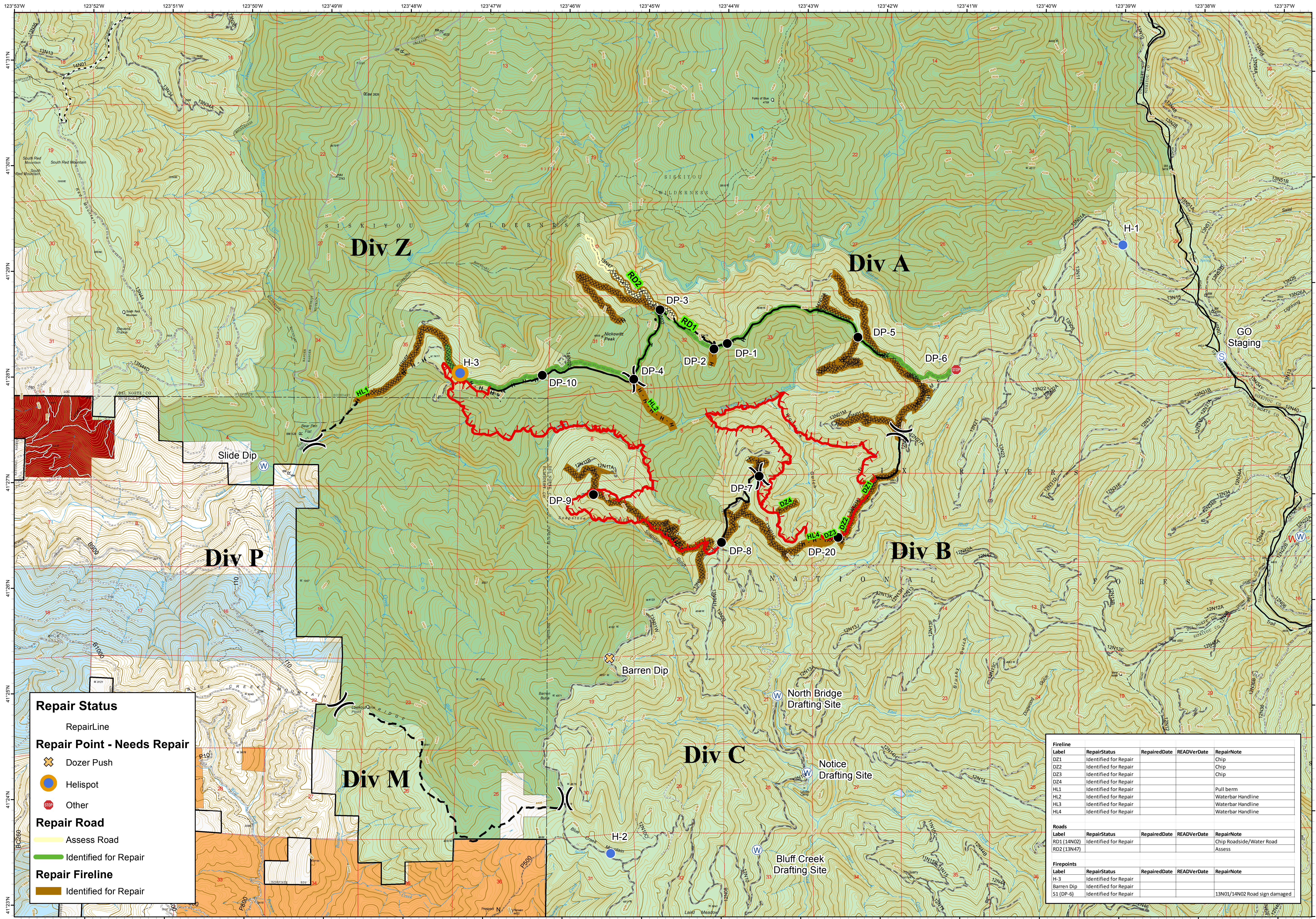
Nickowitz Fire
CA-SRF-1470
08/20/2015
Day Shift
3,866 Acres

- Uncontrolled Fire Edge
- Completed Dozer Line
- Completed Line
- Hand Line
- Planned Fire Line
- Proposed Dozer Line
- Division
- Drop Point
- Helispot
- Staging Area
- Water Source
- Existing System Roads**
- 1 - BASIC CUSTODIAL CARE (CLOSED)
- 2 - HIGH CLEARANCE VEHICLES
- 3 - SUITABLE FOR PASSENGER CARS
- 4 - MODERATE DEGREE OF USER COMFORT
- 5 - HIGH DEGREE OF USER COMFORT
- Other Roads
- NFS Wilderness
- USDA FOREST SERVICE
- NON FS
- Green Diamond Resource Company
- Western Rivers Forestry
- Yurok Tribe

Interagency Incident Management Team
Nor Cal 1

0.5 0.25 0 0.5
Miles

MTD
August 19, 2015
2047 Hours



Repair Status

RepairLine

Repair Point - Needs Repair

- Dozer Push
- Helispot
- Other

Repair Road

- Assess Road
- Identified for Repair

Repair Fireline

- Identified for Repair

| Fireline Label | RepairStatus | RepairedDate | READVerDate | RepairNote |
|----------------|-----------------------|--------------|-------------|-------------------|
| DZ1 | Identified for Repair | | | Chip |
| DZ2 | Identified for Repair | | | Chip |
| DZ3 | Identified for Repair | | | Chip |
| DZ4 | Identified for Repair | | | |
| HL1 | Identified for Repair | | | Pull berm |
| HL2 | Identified for Repair | | | Waterbar Handline |
| HL3 | Identified for Repair | | | Waterbar Handline |
| HL4 | Identified for Repair | | | Waterbar Handline |

| Roads Label | RepairStatus | RepairedDate | READVerDate | RepairNote |
|-------------|-----------------------|--------------|-------------|--------------------------|
| RD1 (14N02) | Identified for Repair | | | Chip Roadside/Water Road |
| RD2 (13N47) | Identified for Repair | | | Assess |

| Firepoints Label | RepairStatus | RepairedDate | READVerDate | RepairNote |
|------------------|-----------------------|--------------|-------------|-------------------------------|
| H-3 | Identified for Repair | | | |
| Barren Dip | Identified for Repair | | | |
| S1 (DP-6) | Identified for Repair | | | 13N01/14N02 Road sign damaged |