

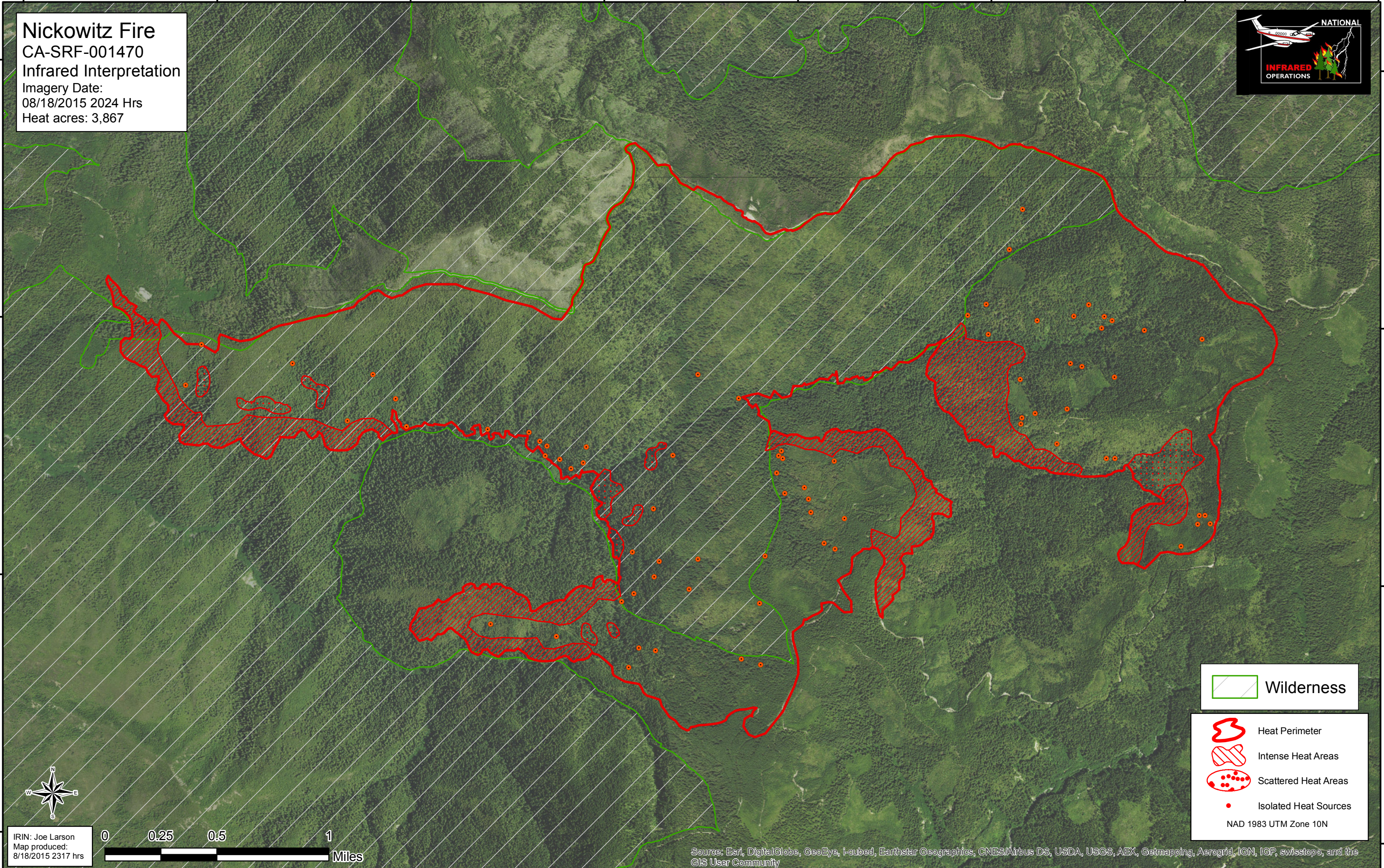
123°48'W 123°47'W 123°46'W 123°45'W 123°44'W 123°43'W 123°42'W 123°41'W

**Nickowitz Fire**  
CA-SRF-001470  
Infrared Interpretation  
Imagery Date:  
08/18/2015 2024 Hrs  
Heat acres: 3,867



41°29'N  
41°28'N  
41°27'N  
41°26'N

41°29'N  
41°28'N  
41°27'N  
41°26'N



IRIN: Joe Larson  
Map produced:  
8/18/2015 2317 hrs



Wilderness

Heat Perimeter

Intense Heat Areas

Scattered Heat Areas

Isolated Heat Sources

NAD 1983 UTM Zone 10N

Source: Esri, DigitalGlobe, GeoEye, i-cubed, Earthstar Geographics, CNES/Airbus DS, USDA, USGS, AEX, Getmapping, Aerogrid, IGN, IGP, swisstopo, and the GIS User Community

123°48'W 123°47'W 123°46'W 123°45'W 123°44'W 123°43'W 123°42'W 123°41'W