

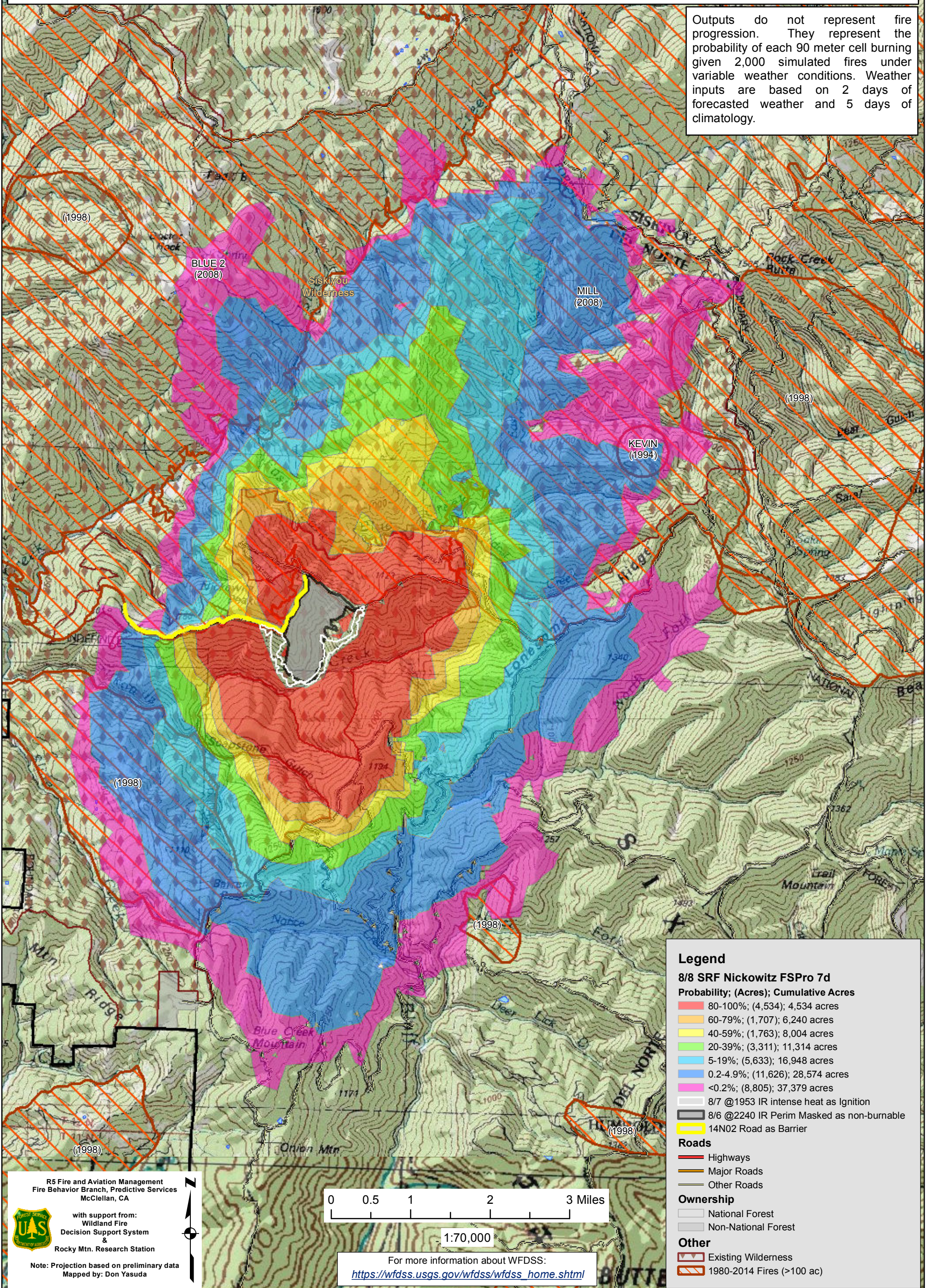
August 8, 2015

WFDSS - FSPRO PROBABILITY: SRF Nickowitz Fire (2015-CASRF-001470)
08/08 - 7 DAYS - 90m Res; 2000 Fire Sim
ERC: 40231 - SOMES BAR (14.5 miles; WINDS: 40430 - SLATE CREEK (10.0 miles)
File: 8.8 7 day FSPro: Analyst: Larry Hood

DARK
(2008)
THREE
(2008)

Notes: 7 day FSPro analysis, 8/8 to 8/14. Masks 8/6 2240 IR perimeter as non-burnable and uses 8/7 1953 IR intense heat as ignition file to capture areas of recent fire growth. Barrier file used on 14N02 road. However the spread probability wraps around it on the north end because it is a partial barrier. Model assumes no suppression action. **Expect spread into low probability surfaces early in the analysis period due to extreme drought conditions and/or forecasted increase in SW winds.**

Outputs do not represent fire progression. They represent the probability of each 90 meter cell burning given 2,000 simulated fires under variable weather conditions. Weather inputs are based on 2 days of forecasted weather and 5 days of climatology.



Legend

8/8 SRF Nickowitz FSPro 7d
Probability; (Acres); Cumulative Acres

- 80-100%; (4,534); 4,534 acres
- 60-79%; (1,707); 6,240 acres
- 40-59%; (1,763); 8,004 acres
- 20-39%; (3,311); 11,314 acres
- 5-19%; (5,633); 16,948 acres
- 0.2-4.9%; (11,626); 28,574 acres
- <0.2%; (8,805); 37,379 acres

8/7 @1953 IR intense heat as Ignition
 8/6 @2240 IR Perim Masked as non-burnable
 14N02 Road as Barrier

Roads

- Highways
- Major Roads
- Other Roads

Ownership

- National Forest
- Non-National Forest

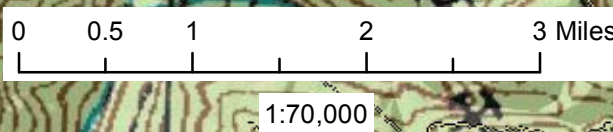
Other

- Existing Wilderness
- 1980-2014 Fires (>100 ac)

R5 Fire and Aviation Management
 Fire Behavior Branch, Predictive Services
 McClellan, CA

with support from:
 Wildland Fire
 Decision Support System
 &
 Rocky Mtn. Research Station

Note: Projection based on preliminary data
 Mapped by: Don Yasuda



For more information about WFDSS:
https://wfdss.usgs.gov/wfdss/wfdss_home.shtml