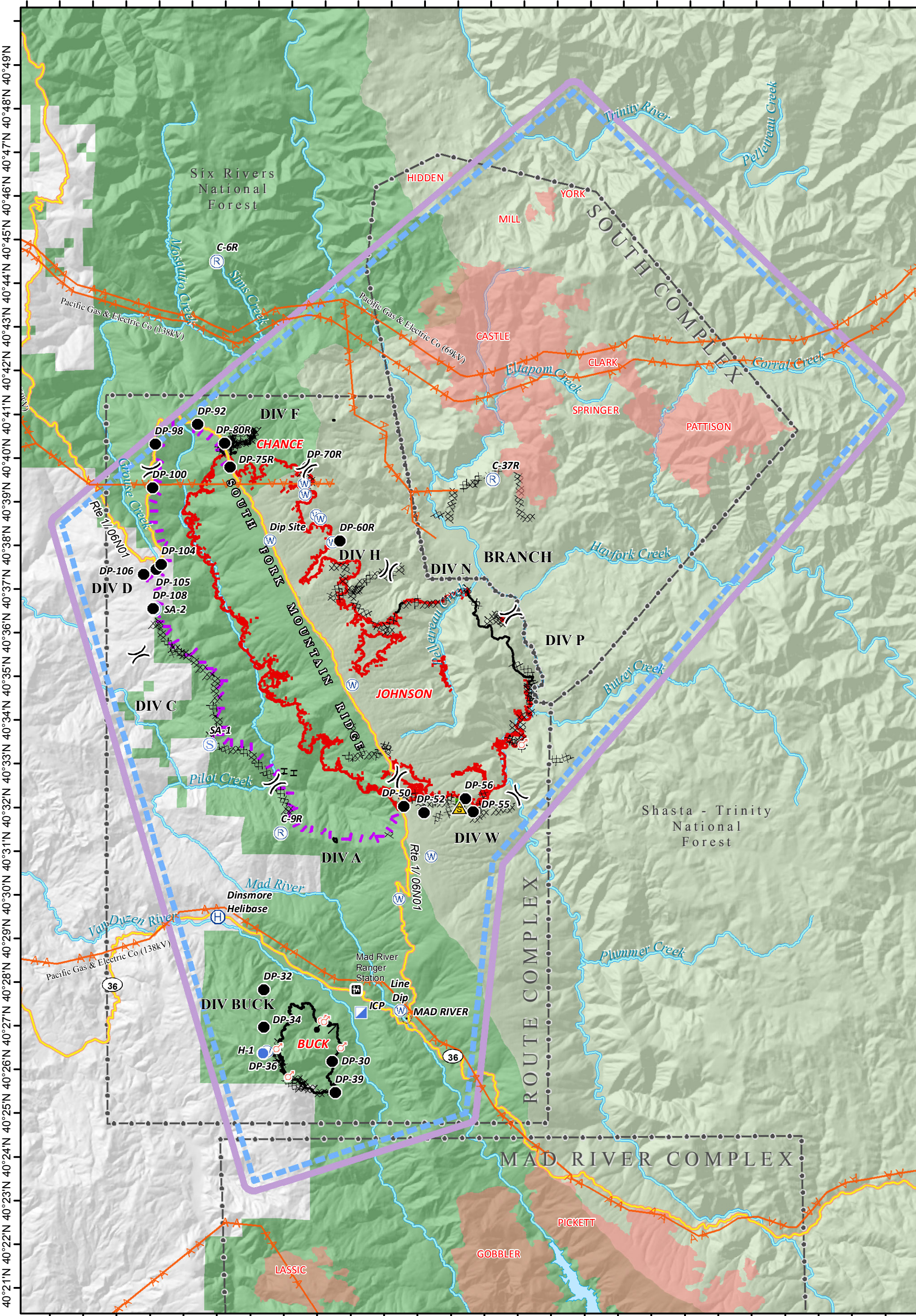
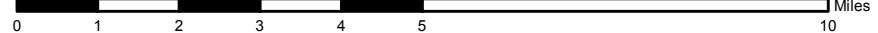


123°42'W 123°40'W 123°38'W 123°36'W 123°34'W 123°32'W 123°30'W 123°28'W 123°26'W 123°24'W 123°22'W 123°20'W 123°18'W 123°16'W



40°21'N 40°22'N 40°23'N 40°24'N 40°25'N 40°26'N 40°27'N 40°28'N 40°29'N 40°30'N 40°31'N 40°32'N 40°33'N 40°34'N 40°35'N 40°36'N 40°37'N 40°38'N 40°39'N 40°40'N 40°41'N 40°42'N 40°43'N 40°44'N 40°45'N 40°46'N 40°47'N 40°48'N 40°49'N 40°50'N

PILOT MAP
ROUTE COMPLEX
CA-SRF-001476
8/12/2015



- | | | | | | |
|-------------------|-----------------------|--------------|------------------------|-------------------|--|
| Transmission Line | Incident Command Post | Spot Fire | Uncontrolled Fire Edge | Escape Route | Fire Complex Group |
| Drop Point | Repeater | Staging Area | Completed Dozer Line | Completed Burnout | Six Rivers National Forest Administrative Boundary |
| Helibase | Safety Zone | Water Source | Completed Line | Planned Fire Line | Shasta-Trinity National Forest Administrative Boundary |
| Helispot | Branch | Hand Line | Division | Proposed Burnout | Other Complex Fires |
| | | | | TFR | |



Map Date: 8/12/2015, 5:03:12 AM
 Map Datum: NAD 83
 Map Projection: UTM Zone 10 North