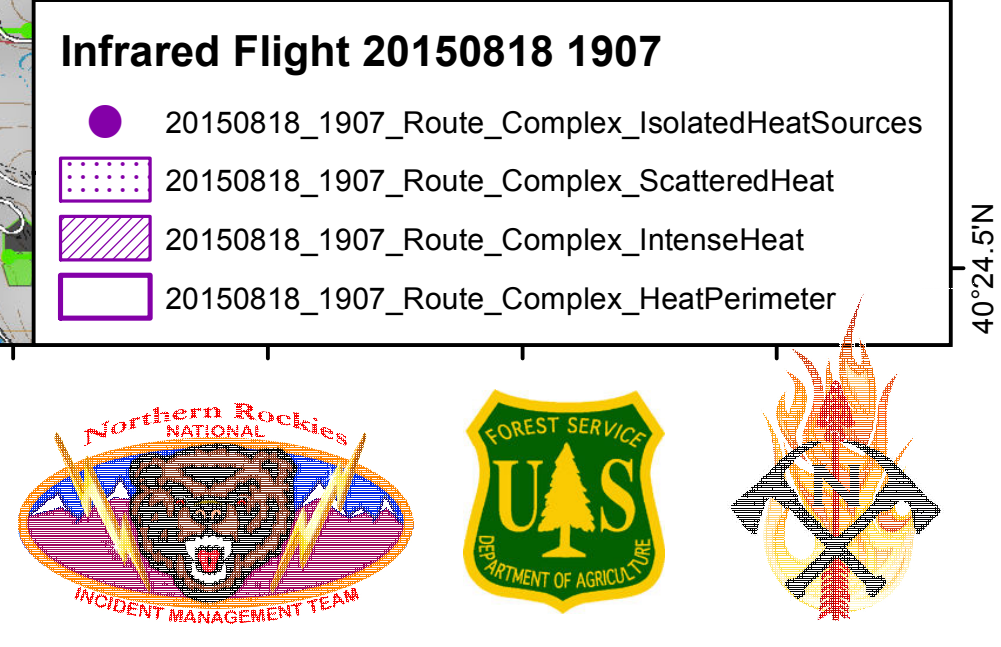


**OPERATIONS MAP**  
 Branch I  
 ROUTE COMPLEX  
 CA-SRF-001476  
 8/20/2015

- |          |            |              |                         |                              |                        |                   |                            |
|----------|------------|--------------|-------------------------|------------------------------|------------------------|-------------------|----------------------------|
| Branch   | Drop Point | ICP          | Staging Area            | Wooden Bridge - Pickups Only | Uncontrolled Fire Edge | Active Burnout    | Structure                  |
| Helibase | Repeater   | Water Source | High Pressure Regulator | Mad River Ranger Station     | Completed Dozer Line   | Completed Burnout | Building Cluster           |
| Division | Helispot   | Safety Zone  | Rock Pit                | Mad River Community          | Completed Line         | Planned Fire Line | Non National Forest Land   |
|          |            |              | Escapes Route           | Proposed Burnout             |                        |                   | Six Rivers National Forest |



Map Datum: NAD 83  
 Map Projection: UTM Zone 10 North  
 Date: 8/19/2015 Time: 5:31:21 AM  
**Six Rivers National Forest & Shasta-Trinity National Forest**