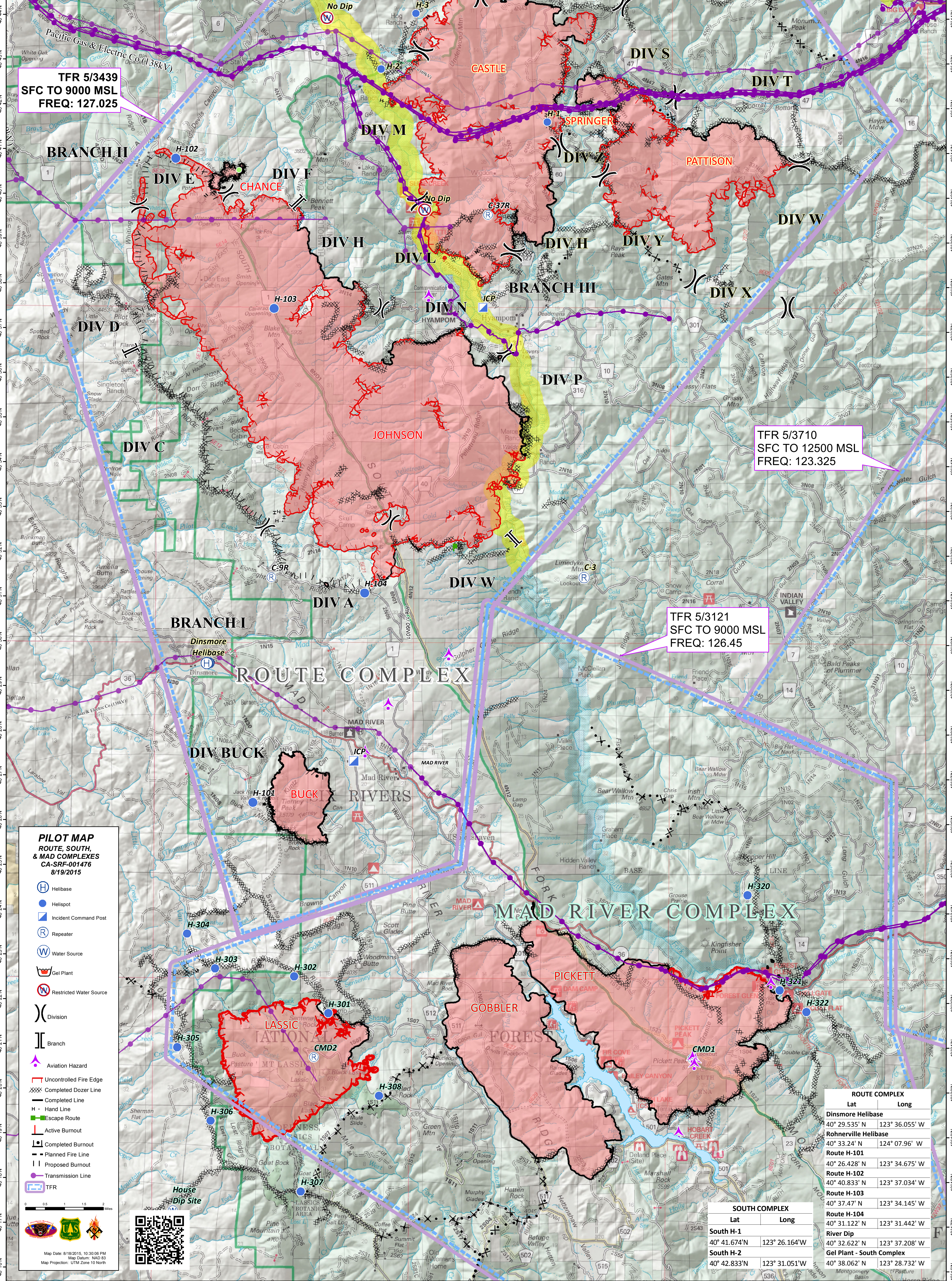


ROUTE/MAD/SOUTH COMPLEX			
AIRCRAFT			
HELICOPTERS-Dinsmore (Route)			
Type 1	Type 2	Type 3	
1206G	H-535		
HELICOPTERS-Mad River (Route)			
Type 1	Type 2	Type 3	
H-516	3835H		
HELICOPTERS-Dinsmore (South)			
Type 1	Type 2	Type 3	
99RH	34CH	124V	
HELICOPTERS-Rohnerville (Route)			
Type 1	Type 2	Type 3	
1AJ			
96W			
96W			
7BH			
HT-783			

ROUTE COMPLEX			
FREQUENCIES	AM	FM	
TFR/ AA-Tactics	127.0250	169.7375	
RW AA-2	118.4000		
ROUTE COMPLEX (Mad River)			
FREQUENCIES	AM	FM	
SRF Admin	Rx 168.1252	Tx 170.4750	Tone 8 103.5
AG-CMD			165.988
AG-Tactical			167.063
DECK FREQ			163.100
COMMAND RPT	Rx 170.0125	Tx 165.2500	Tone 6 156.7
R/W & TFR	126.450	168.8625	

Day	SUNRISE	SUNSET
8/19	0630	2008



TFR 5/3439
SFC TO 9000 MSL
FREQ: 127.025

Approved for dipping
AVOID INLETS
1000' either side

Approved for dipping
AVOID INLETS
1000' either side

TFR 5/4514
SFC TO 11000 MSL
FREQ: 128.025

TFR 5/3121
SFC TO 9000 MSL
FREQ: 126.45

TFR 5/3710
SFC TO 12500 MSL
FREQ: 123.325

PILOT MAP
ROUTE, SOUTH,
& MAD COMPLEXES
CA-SRF-001476
8/19/2015

- Helibase
- Helispot
- Incident Command Post
- Repeater
- Water Source
- Gel Plant
- Restricted Water Source
- Division
- Branch
- Aviation Hazard
- Uncontrolled Fire Edge
- Completed Dozer Line
- Completed Line
- Hand Line
- Escape Route
- Active Burnout
- Completed Burnout
- Planned Fire Line
- Proposed Burnout
- Transmission Line
- TFR

Map Date: 8/18/2015, 10:30:06 PM
Map Datum: NAD 83
Map Projection: UTM Zone 10 North

ROUTE COMPLEX	
Lat	Long
40° 29.535' N	123° 36.055' W
40° 33.24' N	124° 07.96' W
40° 26.428' N	123° 34.675' W
40° 40.833' N	123° 37.034' W
40° 37.47' N	123° 34.145' W
40° 31.122' N	123° 31.442' W
40° 42.833' N	123° 31.051' W

SOUTH COMPLEX	
Lat	Long
40° 41.674' N	123° 26.164' W
40° 32.622' N	123° 37.208' W
40° 38.062' N	123° 28.732' W