

ROUTE/MAD/SOUTH COMPLEX AIRCRAFT		
HELICOPTERS-Dinsmore (Route)		
Type 1	Type 2	Type 3
	1206G	H-535
HELICOPTERS-Mad River (Route)		
Type 1	Type 2	Type 3
	H-516	383SH
	H-509	
HELICOPTERS-Dinsmore (South)		
Type 1	Type 2	Type 3
99RH	34CH	12XH
HELICOPTERS-Rohnerville (Route)		
Type 1	Type 2	Type 3
1AJ		
96W		
96W		
7BH		
HT-783		

Day	SUNRISE	SUNSET
8/21	0630	2015

Approved for dipping
AVOID INLETS
1000' either side

Approved for dipping
AVOID INLETS
1000' either side

TFR 5/4514
SFC TO 11000' MSL
FREQ: 128.025

ROUTE COMPLEX	
Lat	Long
Dinsmore Helibase	
40° 29.535' N	123° 36.055' W
Rohnerville Helibase	
40° 33.24' N	124° 07.96' W
Route H-101	
40° 26.428' N	123° 34.675' W
Route H-102	
40° 40.833' N	123° 37.034' W
Route H-103	
40° 37.47' N	123° 34.145' W
Route H-104	
40° 31.122' N	123° 31.442' W
River Dip	
40° 32.622' N	123° 37.208' W

TFR 5/3439
SFC TO 9000' MSL
FREQ: 127.025

TFR 5/5682
SFC TO 11000' MSL
FREQ: 125.325

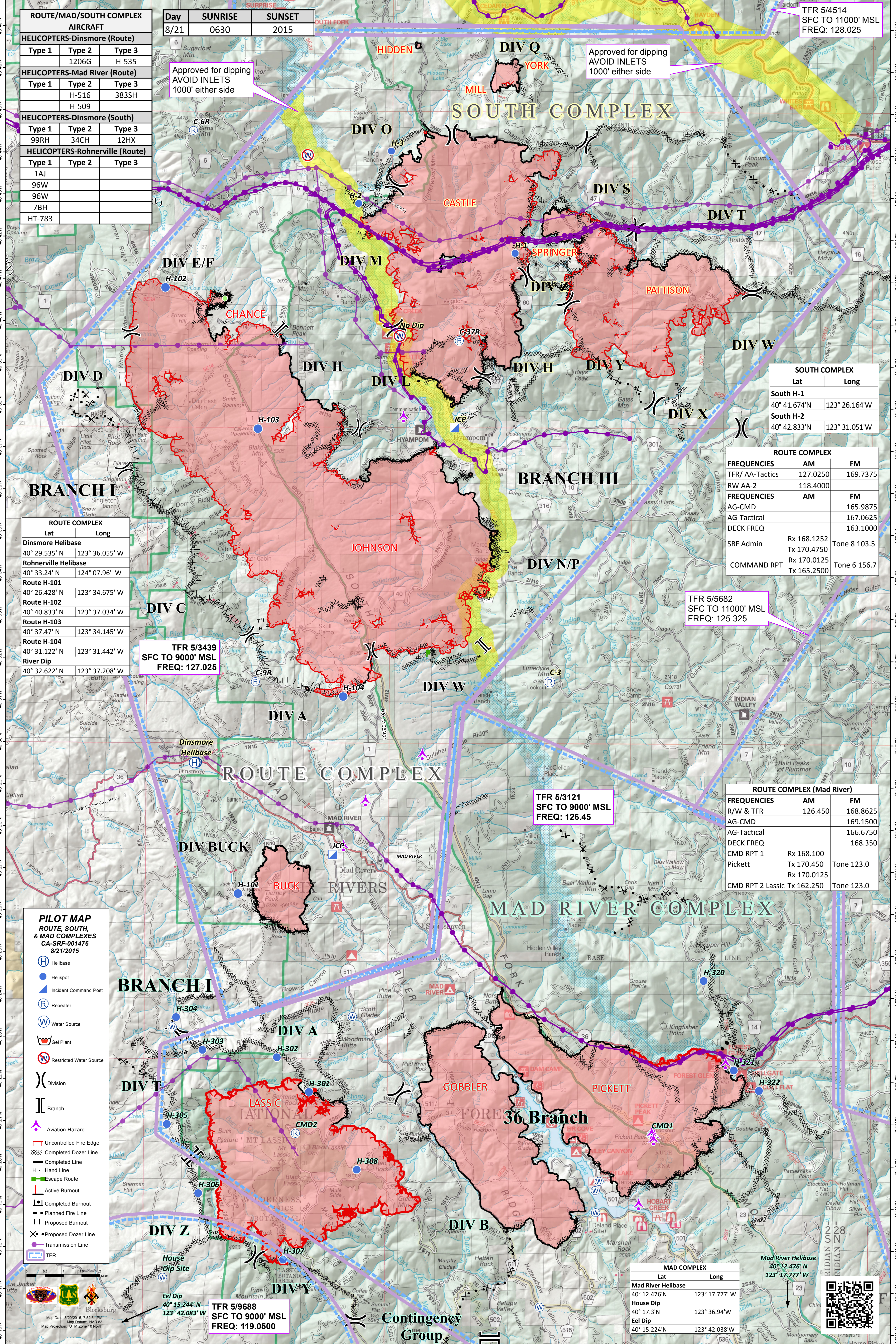
TFR 5/3121
SFC TO 9000' MSL
FREQ: 126.45

ROUTE COMPLEX (Mad River)		
FREQUENCIES	AM	FM
R/W & TFR	126.450	168.8625
AG-CMD		169.1500
AG-Tactical		166.6750
DECK FREQ		168.350
CMD RPT 1	Rx 168.100	
Pickett	Tx 170.450	Tone 123.0
	Rx 170.0125	
CMD RPT 2 Lassic	Tx 162.250	Tone 123.0

- PILOT MAP**
ROUTE, SOUTH, & MAD COMPLEXES
CA-SRF-001476
8/21/2015
- Helibase
 - Helispot
 - Incident Command Post
 - Repeater
 - Water Source
 - Restricted Water Source
 - Gel Plant
 - Division
 - Branch
 - Aviation Hazard
 - Uncontrolled Fire Edge
 - Completed Dozer Line
 - Completed Line
 - Hand Line
 - Escape Route
 - Active Burnout
 - Completed Burnout
 - Planned Fire Line
 - Proposed Burnout
 - Proposed Dozer Line
 - Transmission Line
 - TFR

MAD COMPLEX	
Lat	Long
Mad River Helibase	
40° 12.476' N	123° 17.777' W
House Dip	
40° 17.3' N	123° 36.94' W
Eel Dip	
40° 15.224' N	123° 42.038' W

MAD RIVER COMPLEX	
Lat	Long
Mad River Helibase	
40° 12.476' N	123° 17.777' W



TFR 5/9688
SFC TO 9000' MSL
FREQ: 119.0500

Contingency Group