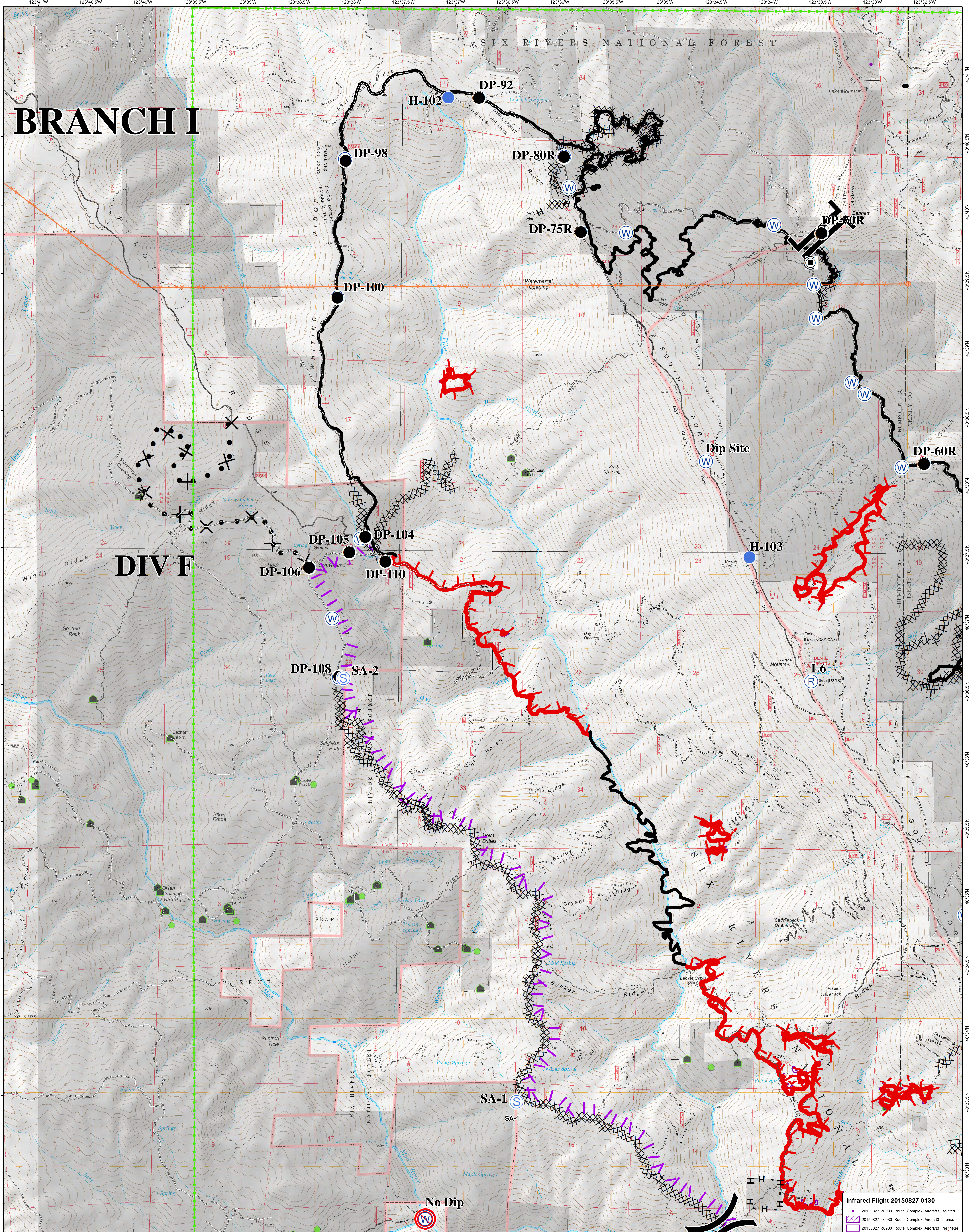


BRANCH I

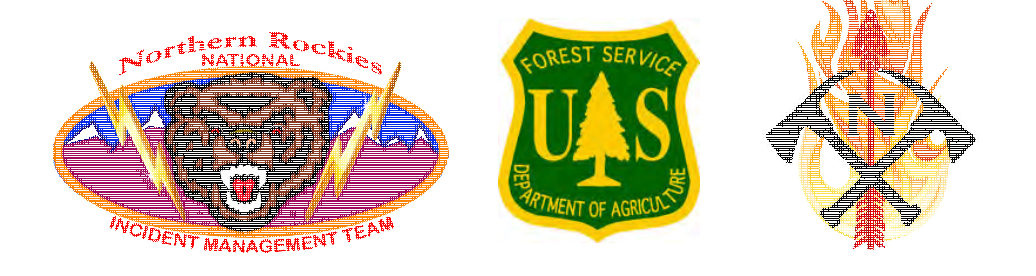
DIV F



OPERATIONS MAP
Branch I North
ROUTE COMPLEX
CA-SRF-001476
8/27/2015

- Branch
- Division
- Restricted Water Source
- Helispot
- Repeater
- Staging Area
- Drop Point
- Water Source
- Road Blocked
- Mad River Ranger Station
- Rock Pit
- Mad River Community
- Wooden Bridge - Pickups Only
- High Pressure Regulator
- Completed Dozer Line
- Completed Line
- Uncontrolled Fire Edge
- Proposed Burnout
- Proposed Dozer Line
- Hand Line
- Structure
- Building Cluster
- Six Rivers National Forest
- Non FS Ownership

Infrared Flight 20150827 0130
20150827_c0930_Route_Complex_Aircraft3_Isolated
20150827_c0930_Route_Complex_Aircraft3_Intense
20150827_c0930_Route_Complex_Aircraft3_Perimeter



Map Datum: NAD 83
Map Projection: UTM Zone 10 North
Date: 8/27/2015 Time: 7:15:25 AM
Six Rivers National Forest & Shasta-Trinity National Forest

