

ROUTE/MAD/SOUTH COMPLEX AIRCRAFT			
<b>HELICOPTERS-Dinsmore (Route/Mad)</b>			
Type 1	Type 2	Type 3	
	1206G	383SH	
<b>HELICOPTERS-Dinsmore (South)</b>			
Type 1	Type 2	Type 3	
99RH	H-506	12HX	
	H-510		
<b>HELICOPTERS-Rohnerville (Route/Mad)</b>			
Type 1	Type 2	Type 3	
1AJ			
96W			
7BH			
HT-783			

ROUTE COMPLEX	
Lat	Long
<b>Dinsmore Helibase</b>	
40° 29.535' N	123° 36.055' W
<b>Rohnerville Helibase</b>	
40° 33.24' N	124° 07.96' W
<b>Route H-101</b>	
40° 26.428' N	123° 34.675' W
<b>Route H-102</b>	
40° 40.833' N	123° 37.034' W
<b>Route H-103</b>	
40° 37.47' N	123° 34.145' W
<b>Route H-104</b>	
40° 31.122' N	123° 31.442' W
<b>River Dip</b>	
40° 32.622' N	123° 37.208' W

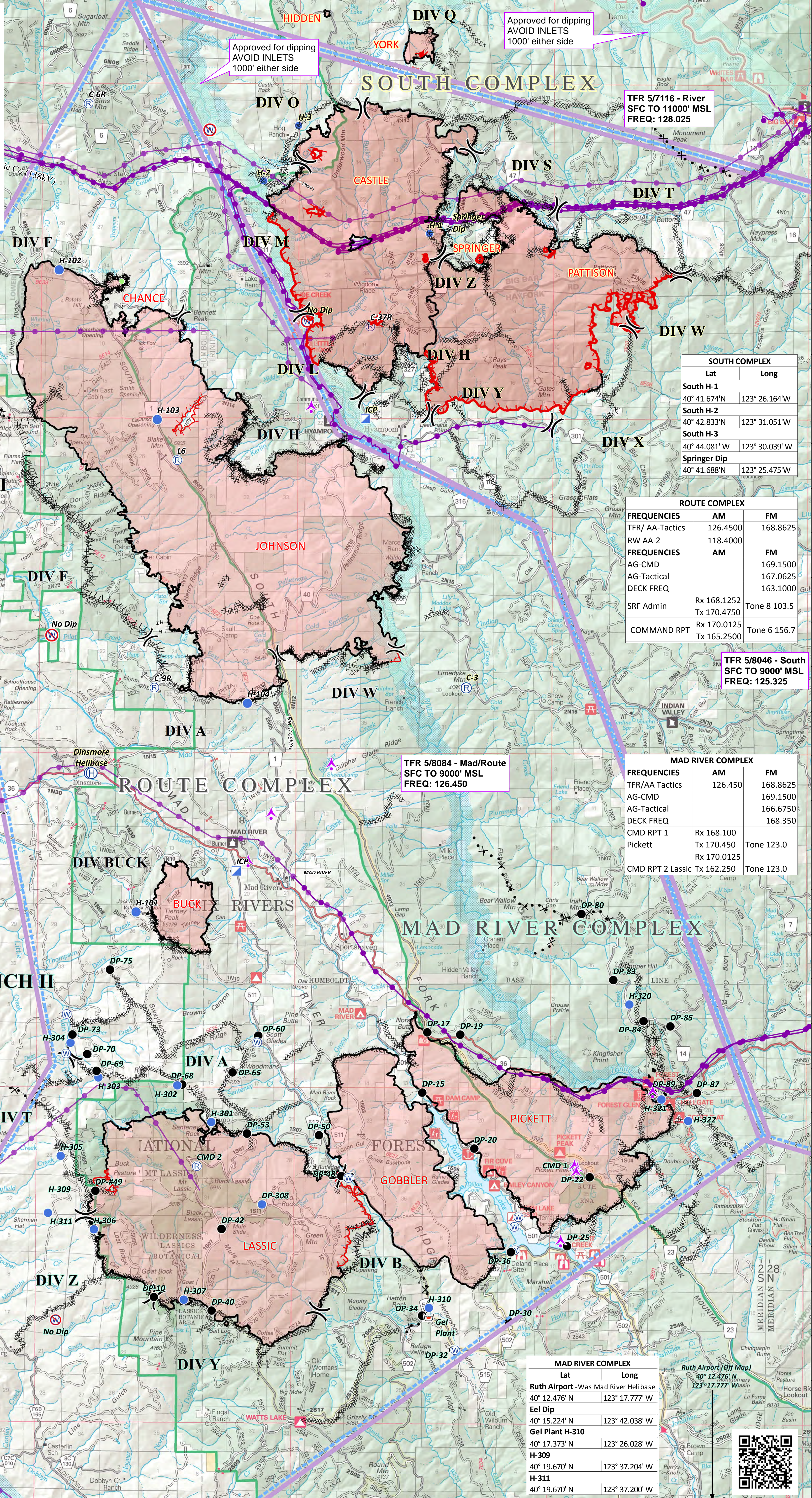
**PILOT MAP**  
ROUTE, SOUTH, & MAD COMPLEXES  
CA-SRF-001476  
8/30/2015

- Helibase
- Helispot
- Incident Command Post
- Repeater
- Water Source
- Restricted Water Source
- Division
- Aviation Hazard
- Uncontrolled Fire Edge
- Completed Dozer Line
- Completed Line
- H-Hand Line
- Completed Burnout
- Planned Fire Line
- Proposed Burnout
- Proposed Dozer Line
- Transmission Line
- TFR

Map Date: 8/30/2015, 1:07:37 AM  
Map Datum: NAD 83  
Map Projection: UTM Zone 10 North

ROUTE COMPLEX	
Lat	Long
<b>Ruth Airport - Was Mad River Helibase</b>	
40° 12.476' N	123° 17.777' W
<b>Eel Dip</b>	
40° 15.224' N	123° 42.038' W
<b>Gel Plant H-310</b>	
40° 17.373' N	123° 26.028' W
<b>H-309</b>	
40° 19.670' N	123° 37.204' W
<b>H-311</b>	
40° 19.670' N	123° 37.200' W

MAD RIVER COMPLEX	
Lat	Long
<b>Ruth Airport (Off Map)</b>	
40° 12.476' N	123° 17.777' W
<b>Eel Dip</b>	
40° 15.224' N	123° 42.038' W
<b>Gel Plant H-310</b>	
40° 17.373' N	123° 26.028' W
<b>H-309</b>	
40° 19.670' N	123° 37.204' W
<b>H-311</b>	
40° 19.670' N	123° 37.200' W



Approved for dipping  
AVOID INLETS  
1000' either side

Approved for dipping  
AVOID INLETS  
1000' either side

TFR 5/7116 - River  
SFC TO 11000' MSL  
FREQ: 128.025

SOUTH COMPLEX	
Lat	Long
<b>South H-1</b>	
40° 41.674' N	123° 26.164' W
<b>South H-2</b>	
40° 42.833' N	123° 31.051' W
<b>South H-3</b>	
40° 44.081' W	123° 30.039' W
<b>Springer Dip</b>	
40° 41.688' N	123° 25.475' W

ROUTE COMPLEX		
FREQUENCIES	AM	FM
TFR/ AA-Tactics	126.4500	168.8625
RW AA-2	118.4000	
AG-CMD		169.1500
AG-Tactical		167.0625
DECK FREQ		163.1000
SRF Admin	Rx 168.1252	Tone 8 103.5
	Tx 170.4750	
COMMAND RPT	Rx 170.0125	Tone 6 156.7
	Tx 165.2500	

TFR 5/8046 - South  
SFC TO 9000' MSL  
FREQ: 125.325

TFR 5/8084 - Mad/Route  
SFC TO 9000' MSL  
FREQ: 126.450

MAD RIVER COMPLEX		
FREQUENCIES	AM	FM
TFR/AA Tactics	126.450	168.8625
AG-CMD		169.1500
AG-Tactical		166.6750
DECK FREQ		168.350
CMD RPT 1	Rx 168.100	
Pickett	Tx 170.450	Tone 123.0
	Rx 170.0125	
CMD RPT 2 Lassic	Tx 162.250	Tone 123.0

MAD RIVER COMPLEX	
Lat	Long
<b>Ruth Airport - Was Mad River Helibase</b>	
40° 12.476' N	123° 17.777' W
<b>Eel Dip</b>	
40° 15.224' N	123° 42.038' W
<b>Gel Plant H-310</b>	
40° 17.373' N	123° 26.028' W
<b>H-309</b>	
40° 19.670' N	123° 37.204' W
<b>H-311</b>	
40° 19.670' N	123° 37.200' W