





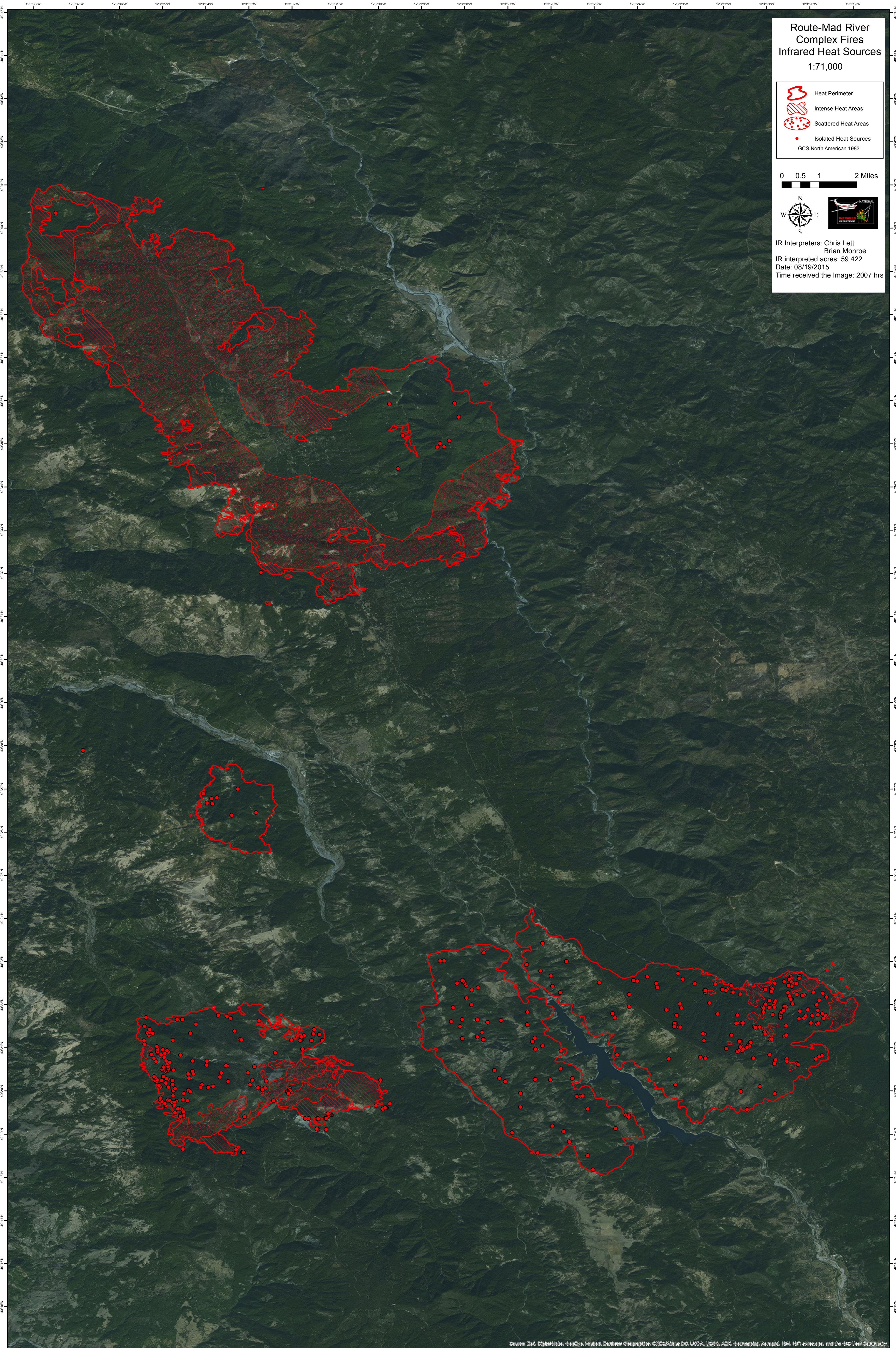
Route-Mad River  
Complex Fires  
Infrared Heat Sources  
1:71,000

-  Heat Perimeter
-  Intense Heat Areas
-  Scattered Heat Areas
-  Isolated Heat Sources
- GCS North American 1983

0 0.5 1 2 Miles



IR Interpreters: Chris Lett  
Brian Monroe  
IR interpreted acres: 59,422  
Date: 08/19/2015  
Time received the Image: 2007 hrs



Source: Esri, DigitalGlobe, GeoEye, Earthstar Geographics, CNES/Airbus DS, USDA, USGS, AeroGRID, IGN, IGP, swisstopo, and the GIS User Community