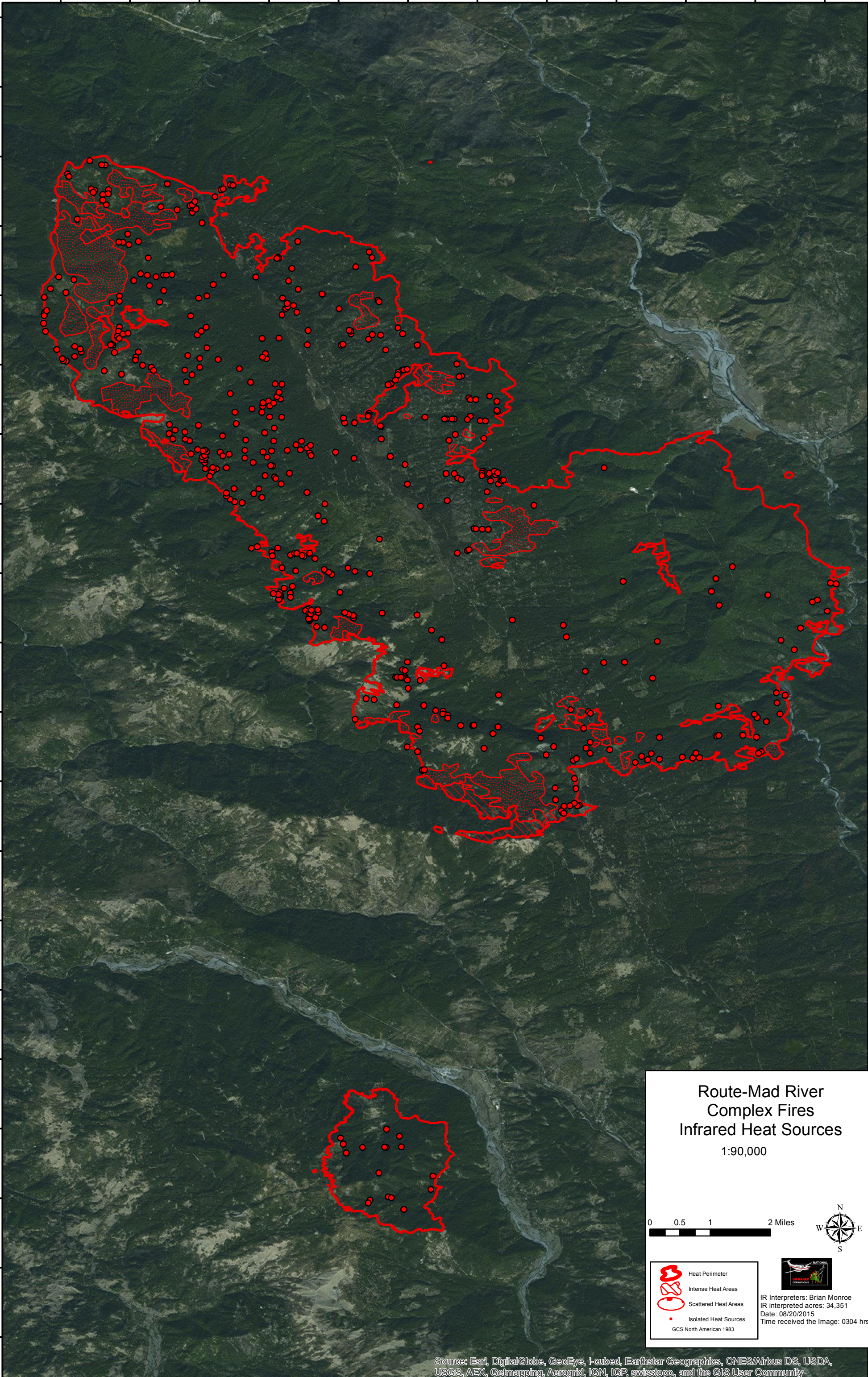


123°38'W 123°37'W 123°36'W 123°35'W 123°34'W 123°33'W 123°32'W 123°31'W 123°30'W 123°29'W 123°28'W 123°27'W

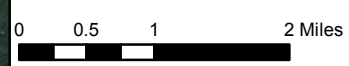
40°43'N
40°42'N
40°41'N
40°40'N
40°39'N
40°38'N
40°37'N
40°36'N
40°35'N
40°34'N
40°33'N
40°32'N
40°31'N
40°30'N
40°29'N
40°28'N
40°27'N
40°26'N
40°25'N
40°24'N



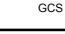
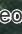
40°43'N
40°42'N
40°41'N
40°40'N
40°39'N
40°38'N
40°37'N
40°36'N
40°35'N
40°34'N
40°33'N
40°32'N
40°31'N
40°30'N
40°29'N
40°28'N
40°27'N
40°26'N
40°25'N
40°24'N



Route-Mad River Complex Fires Infrared Heat Sources

1:90,000



-  Heat Perimeter
 -  Intense Heat Areas
 -  Scattered Heat Areas
 -  Isolated Heat Sources
- GCS North American 1983



IR Interpreters: Brian Monroe
IR Interpreted acres: 34,351
Date: 08/20/2015
Time received the Image: 0304 hrs

Source: Esri, DigitalGlobe, GeoEye, I-cubed, Earthstar Geographics, CNES/Airbus DS, USDA, USGS, AEX, Getmapping, Aerogrid, IGN, IGP, swisstopo, and the GIS User Community

123°38'W 123°37'W 123°36'W 123°35'W 123°34'W 123°33'W 123°32'W 123°31'W 123°30'W 123°29'W 123°28'W 123°27'W