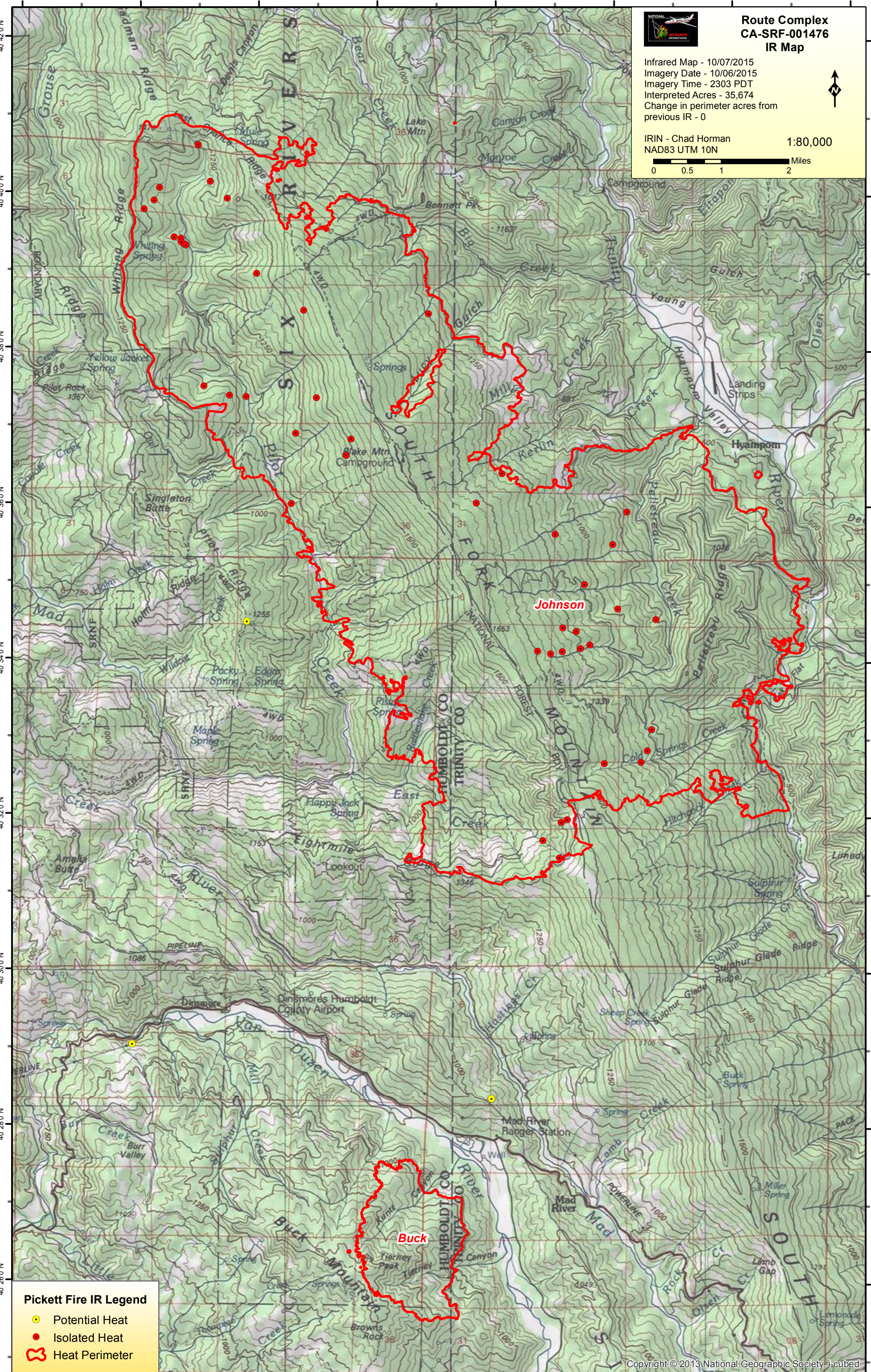


123°40'0"W 123°38'0"W 123°36'0"W 123°34'0"W 123°32'0"W 123°30'0"W 123°28'0"W 123°26'0"W



**Route Complex
CA-SRF-001476
IR Map**

Infrared Map - 10/07/2015
Imagery Date - 10/06/2015
Imagery Time - 2303 PDT
Interpreted Acres - 35,674
Change in perimeter acres from previous IR - 0

IRIN - Chad Horman
NAD83 UTM 10N

1:80,000

0 0.5 1 2 Miles



Pickett Fire IR Legend

- Potential Heat
- Isolated Heat
- Heat Perimeter

123°40'0"W 123°38'0"W 123°36'0"W 123°34'0"W 123°32'0"W 123°30'0"W 123°28'0"W 123°26'0"W