

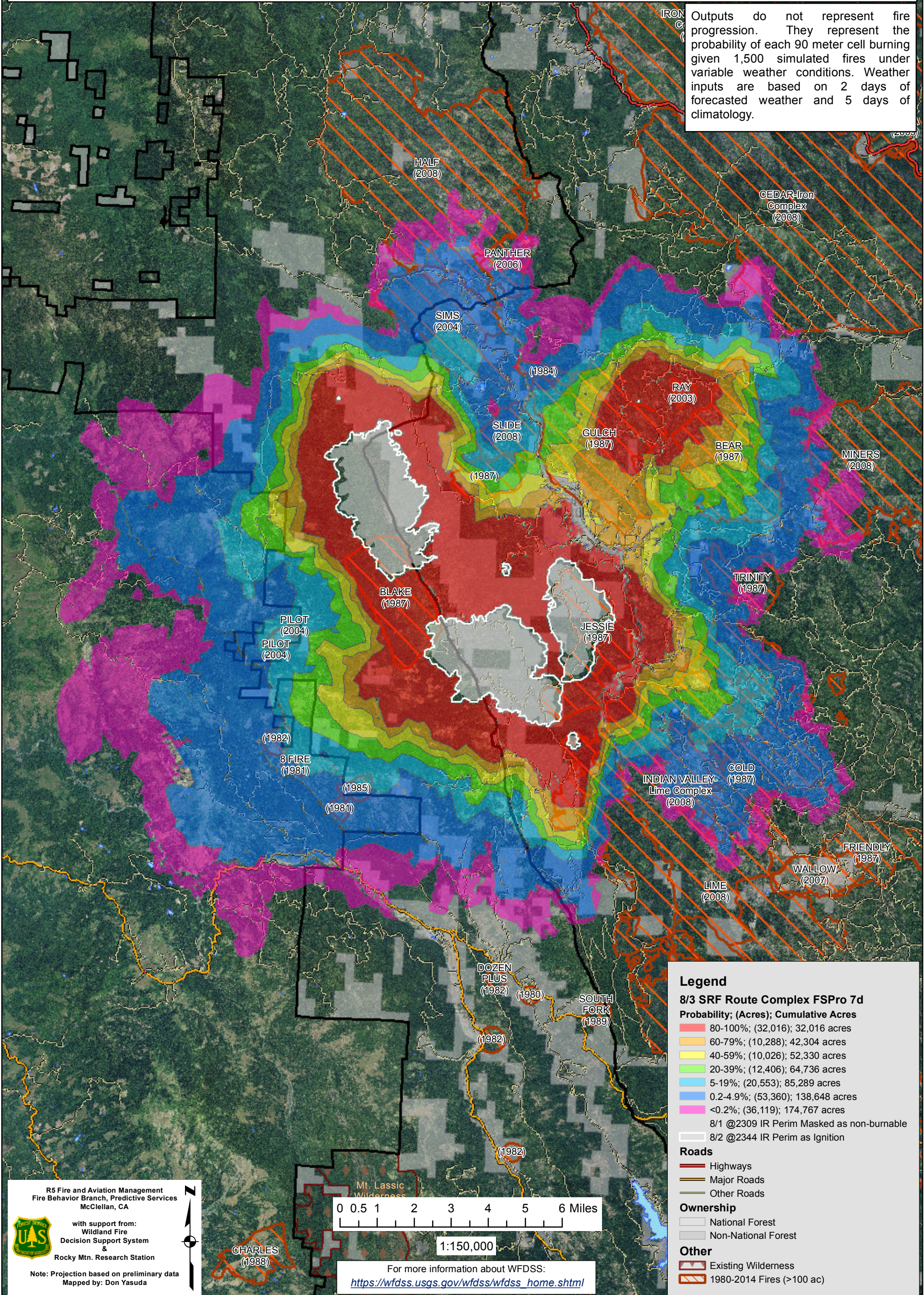
August 3, 2015

WFDSS - FSPRO PROBABILITY: SRF ROUTE COMPLEX (2015-CASRF-0001476)
08/03 - 7 DAYS - 90m Res; 1500 Fire Sim
ERC: 40507 - MAD RIVER (11.1 miles); WINDS: 40519 - UNDERWOOD (7.4 miles)
File: 8.3 Initial 7 day FSPro; Analyst: Larry Hood

Trinity Alps Wilderness

Notes: 8/3 FSPro analysis for 3 large and 4 smaller polygons on the Route Complex. Note that one small ignition on NE planning area boundary likely belongs to another complex. 8/1 2309 IR perimeter of 9,738 acres masked as non-burnable. Uses 8/2 2344 IR perimeter of 11,382 acres as ignition file. **Expect spread into low probability surfaces early in the analysis period due to extreme drought. Model assumes NO suppression action.**

Outputs do not represent fire progression. They represent the probability of each 90 meter cell burning given 1,500 simulated fires under variable weather conditions. Weather inputs are based on 2 days of forecasted weather and 5 days of climatology.



Legend

8/3 SRF Route Complex FSPro 7d

Probability; (Acres); Cumulative Acres

- 80-100%; (32,016); 32,016 acres
- 60-79%; (10,288); 42,304 acres
- 40-59%; (10,026); 52,330 acres
- 20-39%; (12,406); 64,736 acres
- 5-19%; (20,553); 85,289 acres
- 0.2-4.9%; (53,360); 138,648 acres
- <0.2%; (36,119); 174,767 acres

8/1 @2309 IR Perim Masked as non-burnable
 8/2 @2344 IR Perim as Ignition

Roads

- Highways
- Major Roads
- Other Roads

Ownership

- National Forest
- Non-National Forest

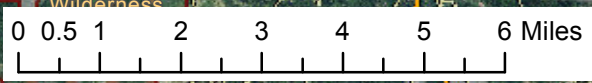
Other

- Existing Wilderness
- 1980-2014 Fires (>100 ac)

R5 Fire and Aviation Management
 Fire Behavior Branch, Predictive Services
 McClellan, CA

with support from:
 Wildland Fire
 Decision Support System
 &
 Rocky Mtn. Research Station

Note: Projection based on preliminary data
 Mapped by: Don Yasuda



1:150,000

For more information about WFDSS:
https://wfdss.usgs.gov/wfdss/wfdss_home.shtml