

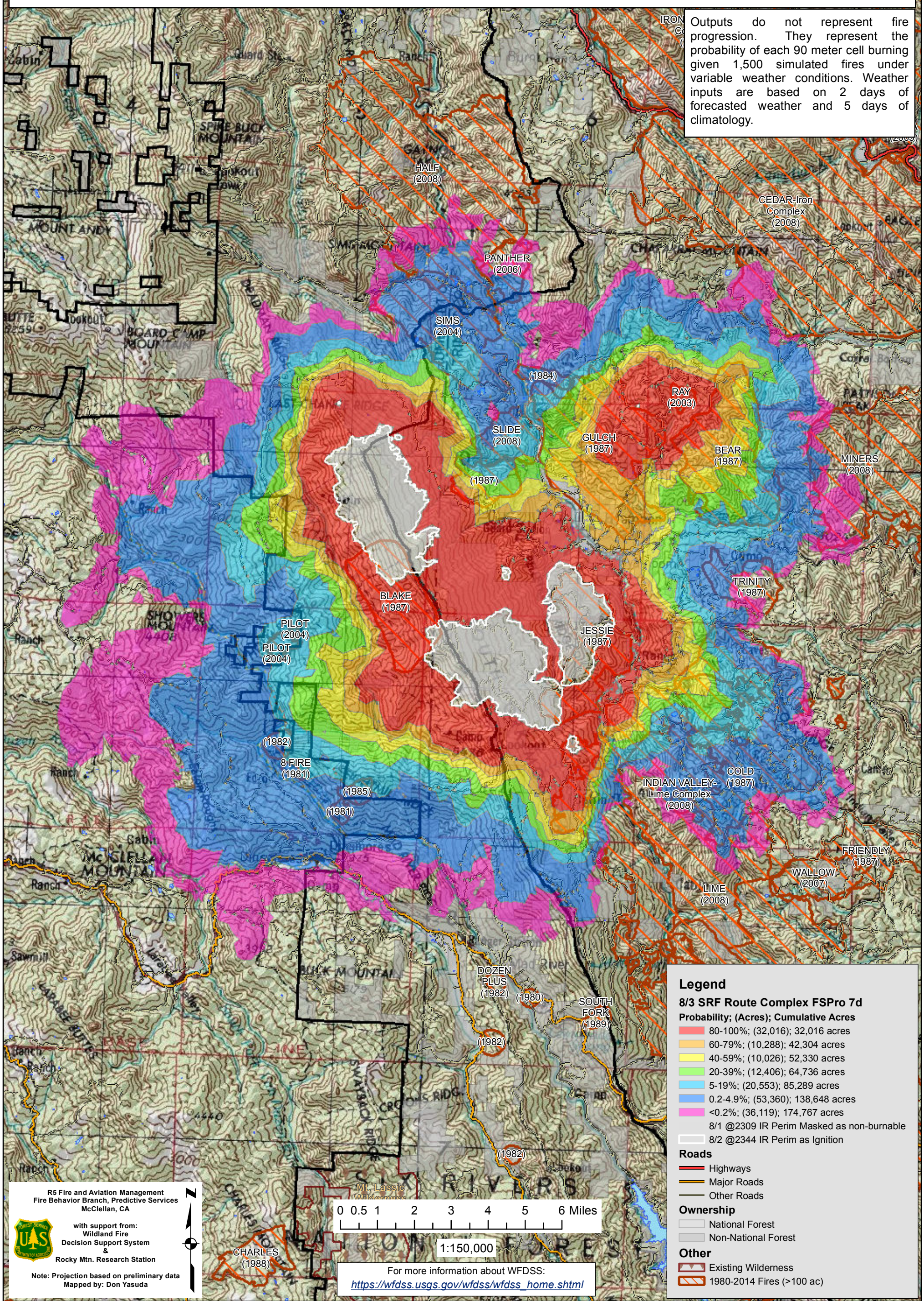
August 3, 2015

**WFDSS - FSPRO PROBABILITY: SRF ROUTE COMPLEX (2015-CASRF-0001476)**  
**08/03 - 7 DAYS - 90m Res; 1500 Fire Sim**  
**ERC: 40507 - MAD RIVER (11.1 miles); WINDS: 40519 - UNDERWOOD (7.4 miles)**  
**File: 8.3 Initial 7 day FSPRO; Analyst: Larry Hood**

Trinity Alps Wilderness

Notes: 8/3 FSPRO analysis for 3 large and 4 smaller polygons on the Route Complex. Note that one small ignition on NE planning area boundary likely belongs to another complex. 8/1 2309 IR perimeter of 9,738 acres masked as non-burnable. Uses 8/2 2344 IR perimeter of 11,382 acres as ignition file. **Expect spread into low probability surfaces early in the analysis period due to extreme drought.** Model assumes NO suppression action.

Outputs do not represent fire progression. They represent the probability of each 90 meter cell burning given 1,500 simulated fires under variable weather conditions. Weather inputs are based on 2 days of forecasted weather and 5 days of climatology.



**Legend**

**8/3 SRF Route Complex FSPRO 7d**

**Probability; (Acres); Cumulative Acres**

- 80-100%; (32,016); 32,016 acres
- 60-79%; (10,288); 42,304 acres
- 40-59%; (10,026); 52,330 acres
- 20-39%; (12,406); 64,736 acres
- 5-19%; (20,553); 85,289 acres
- 0.2-4.9%; (53,360); 138,648 acres
- <0.2%; (36,119); 174,767 acres

8/1 @2309 IR Perim Masked as non-burnable  
 8/2 @2344 IR Perim as Ignition

**Roads**

- Highways
- Major Roads
- Other Roads

**Ownership**

- National Forest
- Non-National Forest

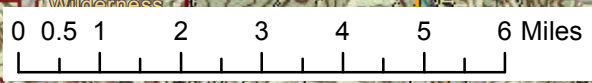
**Other**

- Existing Wilderness
- 1980-2014 Fires (>100 ac)

R5 Fire and Aviation Management  
 Fire Behavior Branch, Predictive Services  
 McClellan, CA

with support from:  
 Wildland Fire  
 Decision Support System  
 &  
 Rocky Mtn. Research Station

Note: Projection based on preliminary data  
 Mapped by: Don Yasuda



1:150,000

For more information about WFDSS:  
[https://wfdss.usgs.gov/wfdss/wfdss\\_home.shtml](https://wfdss.usgs.gov/wfdss/wfdss_home.shtml)