

Corrected copy

GASQUET COMPLEX

INCIDENT ACTION PLAN

OPERATIONAL PERIOD

AUG 6 – Aug 7, 2015

0600-0600



"Adapt...Improvise...and Overcome"



CA-SRF-001488

(0510) P5JOPQ

page intentionally left blank

INCIDENT OBJECTIVES (ICS 202)

1. Incident Name: Gasquet Complex	2. Operational Period:	Date From: 08/06/2015 Time From: 0600	Date To: 08/07/2015 Time To: 0600
---	-------------------------------	--	--------------------------------------

3. Objective(s):

Strategic Framework: The framework for the Gasquet Complex strategic plan consists of using a combination of direct attack where feasible, otherwise indirect using natural barriers. A key element is flexibility and the ability to apply the right resource to the right task at the right time. Fireline will be constructed only where feasible and safe to do so.

Leader's Intent: Provide the highest level of customer services to all involved with or impacted by the Gasquet Complex. All incident personnel should be prepared to take the appropriate actions regarding:

- Personal interactions both inside and outside the incident management organization.
- Personal safety and the safety of others.
- An incident-within-an-incident.

Objectives:

1. Provide for firefighter and public safety by ensuring LCES is evaluated using sound risk management principles.
2. Maintain and build cooperator and stakeholder relationships.
3. Suppress fires while not exposing firefighters or aircraft to unnecessary risks.
4. Identify and protect Native American traditional areas and other sensitive cultural and historic sites.

4. Operational Period Command Emphasis:

Utilize suppression strategies commensurate with values at risk. Implement tactics which increase the probabilities of success while holding existing containment.

General Situational Awareness

When working in steep country where the potential for rapid rates of spread exist, establish safety zones and escape routes and make them known.

5. Site Safety Plan Required? Yes No

Approved Site Safety Plan(s) Located at: _____

6. Incident Action Plan (the items checked below are included in this Incident Action Plan):

X ICS 203	<input type="checkbox"/> ICS 207	<u>Other Attachments:</u>
X ICS 204	<input type="checkbox"/> ICS 208	X <u>Safety Messages / 215A</u>
X ICS 205	X Map/Chart	X <u>Incident within an Incident</u>
<input type="checkbox"/> ICS 205A	X Weather Forecast/Behavior	
X ICS 206		X <u>Training Message</u>

7. Prepared by: Name: Steve Abbott Position/Title: PSC2

8. Approved by Incident Commander: Name: Don Garwood Signature:

ORGANIZATION ASSIGNMENT LIST		Operations Section	
1. Incident Name		Chief - Field	Nickie Washington / Darrell Miller
Gasquet Complex		Chief - Planning	Matt Conklin / Aaron Thompson (T)
2. Date Prepared		a. Divisions/Groups	
08/05/2015	3. Time	Division A (Coon Fire)	Mitch Fowlkes / Dan O'Connor (T)
	2100	Division C (Coon Fire)	Todd McDivitt / Brian Berry (T)
4. Operational Period		Division E (Bear Fire)	Kyle Jacobson / John Owings (T)
DAY 08/06 to 08/07 0600 - 0600		Division H (Williams Fire)	UNSTAFFED
5. Incident Commander and Staff		Division L (Peak Fire)	Candice Kutrosky / Paul Mandolini (T)
Incident Commander	Don Garwood / Dave Kelly	Division N (Peak Fire)	Pedro Villa / D. Woody (T)
Deputy	Dan Felix	Division V (Summit Fire)	UNSTAFFED
Safety Officer	James Aragon / John Bates / Fred Hernandez (T)	Division W (Feeder Fire)	Glen Webb / A. Ward (T) / R. Allan (T)
Information Officer	Jim Wilkins / Bob Poole / Chon Bribiescas (T)	b. Branch II - Division/Groups	
Liaison Officer	Larry Lavogue 909-855-5756	Branch Director	
6. Agency Representatives		Deputy	
Agency	Name	Division/Group	
USFS	Dave Palmer	Division/Group	
Gasquet VFD	Nick Karanopoulos	Division/Group	
CAL EMA	John Salvate	Division/Group	
CalTrans		c. Branch III - Divisions/Groups	
CHP - Del Norte		Branch Director	
Del Norte Cnty Rd		Deputy	
7. Planning Section		Division/Group	
Chief	Steve Abbott	Division/Group	
Deputy	Dave Lattimore	Division/Group	
Resources Unit	Bill Kershaw / Kyle Hauducoeur / Nancy Masters / Joe Scuri (T)	Division/Group	
Situation Unit	Ken VanWig / Gordon Tamplin (T)	Division/Group	
Documentation Unit	Vanessa Hanson	Division/Group	
Demobilization Unit	Tim Knorr	d. Air Operations Branch	
Computer Specialist	Chuck Vertrees	Air Operations Branch Director	Ted Visser
GISS	Richard Murillo / Dawn Hutchinson / Angie Saldidar (T)	Air Attack Supervisor	Ron Serabia
Fire Behavior	Byron Kimball	Air Support Supervisor	Galen Young
Training Specialist	Kathy Kreyms	Helicopter Coordinator	
		Air Tanker Coordinator	
8. Logistics Section		10. Finance Section	
Chief	Eric Sweetman	Chief	Debbie York
Deputy		Deputy	
Supply Unit	Evan Tiss / David Whitney	Time Unit	Sharon Makosky / Deanna Thompson (T)
Facilities Unit	Steve King / Art Curley / Doug Winn (T)	Procurement Unit	
Ground Support Unit	Chris Haley / Ron Noordman	Compensation/Claims Unit	
Communications Unit	Dave Larkin / Chris Perry (T)	Cost Unit	Tom Steake
Medical Unit	Gena Fowlkes	Prepared by (Resource Unit Leader)	
Security Unit	Paul Kain	Nancy Masters	
Food Unit	Rick Waite		

Spot Forecast #3 for Gasquet Complex Fire
National Weather Service Eureka
407 PM PDT Wed Aug 5 2015

IF CONDITIONS BECOME UNREPRESENTATIVE,
CONTACT THE NATIONAL WEATHER SERVICE.

SPOT FORECAST FOR GASQUET COMPLEX...USFS
NATIONAL WEATHER SERVICE EUREKA CA
407 PM PDT WED AUG 5 2015

FORECAST IS BASED ON REQUEST TIME OF 1539 PDT ON AUGUST 05.
IF CONDITIONS BECOME UNREPRESENTATIVE...CONTACT THE NATIONAL WEATHER
SERVICE.

DISCUSSION...WEAK RIDGING WILL PROMOTE WARM AND DRY WEATHER THURSDAY. THIS WILL SET UP SOME WEAK OFFSHORE FLOW WHICH WILL BRING POOR RELATIVE HUMIDITY RECOVERIES ESPECIALLY IN THE NORTHERN DISTRICTS. THE HIGHEST RIDGETOPS CAN SEE EASTERLY WIND GUSTS UP TO 25 MPH EARLY THURSDAY MORNING. AN APPROACHING LOW PRESSURE SYSTEM WILL IMPACT NORTHERN CALIFORNIA THURSDAY NIGHT AND FRIDAY BRINGING A SLIGHT CHANCE FOR SHOWERS AND THUNDERSTORMS. ZONAL UPPER LEVEL FLOW WILL DEVELOP OVER THE WEEKEND.

THURSDAY...

SKY/WEATHER.....SUNNY. HAZE.
MAX TEMPERATURE.....83-91.
MIN HUMIDITY.....23-28 PERCENT.
EYE LEVEL WINDS.....EAST WINDS 5 TO 9 MPH...BECOMING NORTHWEST
6 TO 10 MPH IN THE AFTERNOON.
SURROUNDING RIDGE...BECOMING NORTHWEST 8 TO 14 MPH IN THE AFTERNOON.
MIXING HEIGHT.....1300 FT AGL INCREASING TO 6400 FT AGL LATE IN
THE MORNING...THEN DECREASING TO 400 FT AGL
LATE IN THE AFTERNOON.
MIXING WINDS.....NORTHWEST 14 MPH IN THE AFTERNOON.
WIND (20 FT).....NORTHEAST WINDS 5 TO 9 MPH WITH GUSTS UP TO 15
MPH...BECOMING NORTHWEST 6 TO 10 MPH IN THE
AFTERNOON.
LAL.....1.
CWR.....0 PERCENT.

THURSDAY NIGHT...

SKY/WEATHER.....MOSTLY CLEAR WITH PATCHY SMOKE.
MIN TEMPERATURE.....58-66.
MAX HUMIDITY.....54-64 PERCENT.
EYE LEVEL WINDS.....NORTHWEST 5 TO 8 MPH...BECOMING NORTHEAST
WINDS 6 TO 11 MPH.
SURROUNDING RIDGE...BECOMING EAST 10 TO 14 MPH WITH GUSTS NEAR 20
MPH.
MIXING HEIGHT.....300-500 FT AGL.
MIXING WINDS.....NORTHEAST 17 MPH.
WIND (20 FT).....NORTHEAST WINDS 5 TO 9 MPH WITH GUSTS UP TO 15
MPH.
LAL.....1.
CWR.....0 PERCENT.

FIRE BEHAVIOR FORECAST

FORECAST NUMBER: #3	TYPE OF FIRE: Wildland Fire
FIRE NAME: Gasquet Complex	OPERATIONAL PERIOD: August 06, 2015
DATE ISSUED: August 05, 2015	TIME ISSUED: 2000
UNIT: Smith River NRA, Six Rivers NF	SIGNED: <i>Byron R. Kimball</i>
	Typed/printed: /s/ Byron R. Kimball FBAN

INPUTS

WEATHER SUMMARY: WEAK RIDGING WILL PROMOTE WARM AND DRY WEATHER THURSDAY. THIS WILL SET UP SOME WEAK OFFSHORE FLOW WHICH WILL BRING POOR RELATIVE HUMIDITY RECOVERIES ESPECIALLY IN THE NORTHERN DISTRICTS. THE HIGHEST RIDGETOPS CAN SEE EASTERLY WIND GUSTS UP TO 25 MPH EARLY THURSDAY MORNING.

MAX TEMPERATURE.....83-91.

MIN HUMIDITY.....23-28 PERCENT.

EYE LEVEL WINDS.....EAST WINDS 5 TO 9 MPH...BECOMING NORTHWEST
6 TO 10 MPH IN THE AFTERNOON.

For more specific information, please see the Spot Weather forecast

OUTPUTS

FIRE BEHAVIOR

GENERAL:

Expect a noticeable increase in fire behavior. Increased winds and warmer, drier air has improved burning conditions. Rates of spread and Flame lengths may be 3x what we have previously seen. Upslope runs may last longer and move more aggressively as more heat builds up. Spotting and rollout potential increases with the upswing in intensity. Have now had continuous presence of fire in timber fuels for 4+ days. STAY AWARE.

SPECIFIC:

Timber Understory: Fire behavior in the Understory models should increase. Head Fire Flame length numbers are outside limits for direct attack; ROS starting to lend itself to larger growth.

ROS: 16 to 22 ch/hr.

FL: 8 to 10 ft.

Timber Litter: Timber Litter fire behavior is increasing. Expect to see some involvement of the shrub overstory as the intensity increases. Flame lengths and Rates of spread are starting to show potential for significant growth.

ROS: 12 to 16 ch/hr.

FL: 4 to 5 ft.

AIR OPERATIONS:

With marine layer confined to the coast, better air conditions will prevail earlier in the day.

SAFETY

Increased intensities will involve more of the fuel profile increasing the risk of rolling material.

DIVISION ASSIGNMENT LIST		1. Branch	2. Division/Group A - (Coon Fire)
3. Incident Name Gasquet Complex		4. Operational Period Day Date: 08/06 to 08/07 Time: 0600-0600	

5. Operations Personnel			
Operations Chief	Nickie Washington / Darrell Miller	Division/Group Supervisor	Mitch Fowlkes / Dan O'Connor (T)
Branch Director		Air Attack Supervisor No.	Ron Serabia

6. Resources Assigned This Period					
Strike Team/Task Force/ Resource Designator	Leader	Number Persons	Trans Needed	Drop Off PT/Time	Pick Up PT/Time

7. Control Operations

**Scout for opportunities to reach containment objectives.
Utilize and share resources with DIV C as needed.**

8. Special Instructions

**Coordinate and order aircraft for retardant needs with Air Attack.
Gather intel on fire perimeter and size.**

9. Division/Group Communication Summary							
Function	Frequency	System	Channel	Function	Frequency	System	Channel
Command	See Comm Plan			Logistics			
Tactical Div/Group				Air to Ground			

Prepared By (Resource Unit Leader) Bill Kershaw	Approved By (Planning Sect. Ch.) Steve Abbott	Date 08/05/15	Time 2100
---	---	-------------------------	---------------------

INCIDENT RADIO COMMUNICATIONS PLAN		Incident Name Gasquet Complex		Date/Time Prepared 08/05/2015 1800 hrs	Operational Period Date/Time 08/06/2015 08:07/2015 0600-0600 (24Hr)				
Ch #	Function	Channel Name	Assignment	RX Freq	RX Tone/NAC	TX Freq	TX Tone/NAC	Mode Analog	Remarks
1	Command	CMD 1	All Divisions	167.1000	Tone 15 (162.2)	169.7500	Tone 15 (162.2)	A	Ship Mtn
2	Command	CMD 2	UNASSIGNED	000.0000	Tone 15 (162.2)	000.0000	Tone 15 (162.2)	A	
3	Command	CMD 3	UNASSIGNED	000.0000	Tone 15 (162.2)	000.0000	Tone 15 (162.2)	A	
4	Backup Net	SRF ADM	All Divisions	168.1250		170.4750	Tone 12 (127.3)	A	Gordon Mtn
5	Tactical	NIFC T-5	DIV C	166.7250	Tone 15 (162.2)	166.7250	Tone 15 (162.2)	A	
6	Tactical	NIFC T-6	DIV E	166.7750	Tone 15 (162.2)	166.7750	Tone 15 (162.2)	A	
7	Tactical	NIFC T-7	DIV H	168.2500	Tone 15 (162.2)	168.2500	Tone 15 (162.2)	A	
8	Tactical	NIFC T-1	DIV L	168.0500	Tone 15 (162.2)	168.0500	Tone 15 (162.2)	A	
9	Tactical	NIFC T-3	DIV V	168.6000	Tone 15 (162.2)	168.6000	Tone 15 (162.2)	A	
10	Air to Ground	A/G-TAC	All Divisions	165.3875		165.3875		A	
11	Air to Ground	A/G-CMD	UNASSIGNED					A	
12	Tactical	R5 TAC 4	DIV W	166.5500	Tone 15 (162.2)	166.5500	Tone 15 (162.2)	A	
13	Tactical	R5 TAC 5	UNASSIGNED	167.1125	Tone 15 (162.2)	167.1125	Tone 15 (162.2)	A	
14	Tactical	R5 TAC 6	UNASSIGNED	168.2375	Tone 15 (162.2)	168.2375	Tone 15 (162.2)	A	
15	EMS TAC	CALCORD	All Divisions	156.0750		156.0750	Tone 6 (156.7)	A	Medical A/G
16/20	AIR GUARD	GUARD	All Divisions	168.6250		168.6250	Tone 1 (110.9)	A	Emergency Only

5. Prepared by (Communications Unit)

• Chris Perry COML(f) COMMUNICATIONS 951 833-7403 *CR*

Incident Location
County

State Latitude Longitude

W

DIVISION ASSIGNMENT LIST		1. Branch		2. Division/Group C - (Coon Fire)			
3. Incident Name Gasquet Complex		4. Operational Period Day Date: 08/06 to 08/07		Time: 0600-0600			
5. Operations Personnel							
Operations Chief	Nickie Washington / Darrell Miller		Division/Group Supervisor		Todd McDivitt / Brian Berry (T)		
Branch Director			Air Attack Supervisor No.		Ron Serabia		
6. Resources Assigned This Period							
Strike Team/Task Force/ Resource Designator	Leader	Number Persons	Trans Needed	Drop Off PT/Time	Pick Up PT/Time		
ENG3 LKP 5031	Rick Bergem	3	No	ICP / 0630	ICP / 1900		
ENG3 SRM 331	Mike Avery	4	No	ICP / 0630	ICP / 1900		
ENG3 CRK 379	John Angell	4	No	ICP / 0630	ICP / 1900		
ENG3 Santa Clara 33	Ty Hansen	4	No	ICP / 0630	ICP / 1900		
ENG4 MQ Franco 169	Pickering	3	No	ICP / 0630	ICP / 1900		
ENG6 Albany 2180	Tim Smyser	3	No	ICP / 0630	ICP / 1900		
WT2 Wood's	Steve Wendt	2	No	ICP / 0630	ICP / 1900		
WT2 All Agency	John Hill	1	No	ICP / 0630	ICP / 1900		
DOZ2 Warner	Dan Warner	1	No	ICP / 0630	ICP / 1900		
HEQB	Rich Waters	1	No	ICP / 0630	ICP / 1900		
TFLD	Alex Viktora	1	No	ICP / 0630	ICP / 1900		
SOFR	<i>Don Berg Doug</i>	1	No	ICP / 0630	ICP / 1900		
7. Control Operations <i>E-42 WT2 Sierra Timbers Doug Lingen 1</i> Improve anchor points. Continue line construction. Scout for opportunities to reach containment objectives. Utilize and share resources with DIV A as needed.							
8. Special Instructions Coordinate and order aircraft for retardant needs with Air Attack. Gather intel on fire perimeter and size.							
9. Division/Group Communication Summary							
Function	Frequency	System	Channel	Function	Frequency	System	Channel
Command	See Comm Plan			Logistics			
Tactical Div/Group				Air to Ground			
Prepared By (Resource Unit Leader) Bill Kershaw		Approved By (Planning Sect. Ch.) Steve Abbott		Date 08/05/15		Time 2100	

INCIDENT RADIO COMMUNICATIONS PLAN		Incident Name Gasquet Complex		Date/Time Prepared 08/05/2015 1800 hrs	Operational Period Date/Time 08/06/2015 08:07/2015 0600-0600 (24Hr)				
Ch #	Function	Channel Name	Assignment	RX Freq	RX Tone/NAC	TX Freq	TX Tone/NAC	Made Analog	Remarks
1	Command	CMD 1	All Divisions	167.1000	Tone 15 (162.2)	169.7500	Tone 15 (162.2)	A	Ship Mtn
2	Command	CMD 2	UNASSIGNED	000.0000	Tone 15 (162.2)	000.0000	Tone 15 (162.2)	A	
3	Command	CMD 3	UNASSIGNED	000.0000	Tone 15 (162.2)	000.0000	Tone 15 (162.2)	A	
4	Backup Net	SRF ADM	All Divisions	168.1250		170.4750	Tone 12 (127.3)	A	Gordon Mtn
5	Tactical	NIFC T-5	DIV C	166.7250	Tone 15 (162.2)	166.7250	Tone 15 (162.2)	A	
6	Tactical	NIFC T-6	DIV E	166.7750	Tone 15 (162.2)	166.7750	Tone 15 (162.2)	A	
7	Tactical	NIFC T-7	DIV H	168.2500	Tone 15 (162.2)	168.2500	Tone 15 (162.2)	A	
8	Tactical	NIFC T-1	DIV L	168.0500	Tone 15 (162.2)	168.0500	Tone 15 (162.2)	A	
9	Tactical	NIFC T-3	DIV V	168.6000	Tone 15 (162.2)	168.6000	Tone 15 (162.2)	A	
10	Air to Ground	A/G-TAC	All Divisions	165.3875		165.3875		A	
11	Air to Ground	A/G-CMD	UNASSIGNED					A	
12	Tactical	R5 TAC 4	DIV W	166.5500	Tone 15 (162.2)	166.5500	Tone 15 (162.2)	A	
13	Tactical	R5 TAC 5	UNASSIGNED	167.1125	Tone 15 (162.2)	167.1125	Tone 15 (162.2)	A	
14	Tactical	R5 TAC 6	UNASSIGNED	168.2375	Tone 15 (162.2)	168.2375	Tone 15 (162.2)	A	
15	EMS TAC	CALCORD	All Divisions	156.0750		156.0750	Tone 6 (156.7)	A	Medical A/G
16/20	AIR GUARD	GUARD	All Divisions	168.6250		168.6250	Tone 1 (110.9)	A	Emergency Only

S. Prepared by (Communications Unit)
 • Chris Perry COML(t) COMMUNICATIONS 951 833-7403

State Latitude N Longitude W

DIVISION ASSIGNMENT LIST		1. Branch		2. Division/Group E - (Bear Fire)			
3. Incident Name Gasquet Complex		4. Operational Period Day Date: 08/06 to 08/07 Time: 0600-0600					
5. Operations Personnel							
Operations Chief	Nickie Washington / Darrell Miller		Division/Group Supervisor	Kyle Jacobson / John Owings (T)			
Branch Director			Air Attack Supervisor No.	Ron Serabia			
6. Resources Assigned This Period							
Strike Team/Task Force/ Resource Designator	Leader	Number Persons	Trans Needed	Drop Off PT/Time	Pick Up PT/Time		
ENG6 WID 2616	Chad Niblett	3	No	ICP / 0630	ICP / 1900		
WT2 Intl Workstar	Allen Williams	2	No	ICP / 0630	ICP / 1900		
<i>ENG6 E-33</i>	<i>Scott Haney</i>	<i>3</i>					
<i>ENG3 E-28</i>	<i>Justus Barton</i>	<i>3</i>					
<i>ENG3 E-31</i>	<i>Scott Haney</i>	<i>3</i>					
<i>ENG E-35</i>	<i>Andrew Watson</i>						
	<i>Chad Niblett</i>	<i>3</i>					
7. Control Operations							
<p>Continue to hold and improve anchor points. Scout for opportunities to reach containment objectives.</p>							
8. Special Instructions							
<p>Coordinate and order aircraft for retardant needs with Air Attack. Gather intel on fire perimeter and size.</p>							
9. Division/Group Communication Summary							
Function	Frequency	System	Channel	Function	Frequency	System	Channel
Command	See Comm Plan			Logistics			
Tactical Div/Group				Air to Ground			
Prepared By (Resource Unit Leader)		Approved By (Planning Sect. Ch.)		Date		Time	
Bill Kershaw		Steve Abbott		08/05/15		2100	

INCIDENT RADIO COMMUNICATIONS PLAN		Incident Name Gasquet Complex		Date/Time Prepared 08/05/2015 1800 hrs		Operational Period Date/Time 08/06/2015 08:07/2015 0600-0600 (24Hr)			
Ch #	Function	Channel Name	Assignment	RX Freq	RX Tone/NAC	TX Freq	Tx Tone/NAC	Mode Analog	Remarks
1	Command	CMD 1	All Divisions	167.1000	Tone 15 (162.2)	169.7500	Tone 15 (162.2)	A	Ship Mtn
2	Command	CMD 2	UNASSIGNED	000.0000	Tone 15 (162.2)	000.0000	Tone 15 (162.2)	A	
3	Command	CMD 3	UNASSIGNED	000.0000	Tone 15 (162.2)	000.0000	Tone 15 (162.2)	A	
4	Backup Net	SRF ADM	All Divisions	168.1250		170.4750	Tone 12 (127.3)	A	Gordon Mtn
5	Tactical	NIFC T-5	DIV C	166.7250	Tone 15 (162.2)	166.7250	Tone 15 (162.2)	A	
6	Tactical	NIFC T-6	DIV E	166.7750	Tone 15 (162.2)	166.7750	Tone 15 (162.2)	A	
7	Tactical	NIFC T-7	DIV H	168.2500	Tone 15 (162.2)	168.2500	Tone 15 (162.2)	A	
8	Tactical	NIFC T-1	DIV L	168.0500	Tone 15 (162.2)	168.0500	Tone 15 (162.2)	A	
9	Tactical	NIFC T-3	DIV V	168.6000	Tone 15 (162.2)	168.6000	Tone 15 (162.2)	A	
10	Air to Ground	A/G-TAC	All Divisions	165.3875		165.3875		A	
11	Air to Ground	A/G-CMD	UNASSIGNED					A	
12	Tactical	R5 TAC 4	DIV W	166.5500	Tone 15 (162.2)	166.5500	Tone 15 (162.2)	A	
13	Tactical	R5 TAC 5	UNASSIGNED	167.1125	Tone 15 (162.2)	167.1125	Tone 15 (162.2)	A	
14	Tactical	R5 TAC 6	UNASSIGNED	168.2375	Tone 15 (162.2)	168.2375	Tone 15 (162.2)	A	
15	EMS TAC	CALCORD	All Divisions	156.0750		156.0750	Tone 6 (156.7)	A	Medical A/G
16/20	AIR GUARD	GUARD	All Divisions	168.6250		168.6250	Tone 1 (110.9)	A	Emergency Only

5. Prepared by (Communications Unit)
 • Chris Perry COML(t) COMMUNICATIONS 951 833-7403

Incident Location
 County State Latitude Longitude
 N W

DIVISION ASSIGNMENT LIST				1. Branch		2. Division/Group	
3. Incident Name Gasquet Complex				4. Operational Period Day		H - (Williams Fire)	
				Date: 08/06 to 08/07		Time: 0600-0600	
5. Operations Personnel							
Operations Chief		Nickie Washington / Darrell Miller		Division/Group Supervisor		UNSTAFFED	
Branch Director				Air Attack Supervisor No.		Ron Serabia	
6. Resources Assigned This Period							
Strike Team/Task Force/ Resource Designator	Leader	Number Persons	Trans Needed	Drop Off PT/Time	Pick Up PT/Time		
7. Control Operations							
Monitor by air.							
8. Special Instructions							
9. Division/Group Communication Summary							
Function	Frequency	System	Channel	Function	Frequency	System	Channel
Command	See Comm Plan			Logistics			
Tactical Div/Group				Air to Ground			
Prepared By (Resource Unit Leader)		Approved By (Planning Sect. Ch.)			Date		Time
Bill Kershaw		Steve Abbott			08/05/15		2100

INCIDENT RADIO COMMUNICATIONS PLAN		Incident Name Gasquet Complex		Date/Time Prepared 08/05/2015 1800 hrs		Operational Period Date/Time 08/06/2015 08/07/2015 0600-0600 (24Hr)			
Ch #	Function	Channel Name	Assignment	RX Freq	RX Tone/NAC	TX Freq	Tx Tone/NAC	Made Analog	Remarks
1	Command	CMD 1	All Divisions	167.1000	Tone 15 (162.2)	169.7500	Tone 15 (162.2)	A	Ship Mtn
2	Command	CMD 2	UNASSIGNED	000.0000	Tone 15 (162.2)	000.0000	Tone 15 (162.2)	A	
3	Command	CMD 3	UNASSIGNED	000.0000	Tone 15 (162.2)	000.0000	Tone 15 (162.2)	A	
4	Backup Net	SRF ADM	All Divisions	168.1250		170.4750	Tone 12 (127.3)	A	Gordon Mtn
5	Tactical	NIFC T-5	DIV C	166.7250	Tone 15 (162.2)	166.7250	Tone 15 (162.2)	A	
6	Tactical	NIFC T-6	DIV E	166.7750	Tone 15 (162.2)	166.7750	Tone 15 (162.2)	A	
7	Tactical	NIFC T-7	DIV H	168.2500	Tone 15 (162.2)	168.2500	Tone 15 (162.2)	A	
8	Tactical	NIFC T-1	DIV L	168.0500	Tone 15 (162.2)	168.0500	Tone 15 (162.2)	A	
9	Tactical	NIFC T-3	DIV V	168.6000	Tone 15 (162.2)	168.6000	Tone 15 (162.2)	A	
10	Air to Ground	A/G-TAC	All Divisions	165.3875		165.3875		A	
11	Air to Ground	A/G-CMD	UNASSIGNED					A	
12	Tactical	R5 TAC 4	DIV W	166.5500	Tone 15 (162.2)	166.5500	Tone 15 (162.2)	A	
13	Tactical	R5 TAC 5	UNASSIGNED	167.1125	Tone 15 (162.2)	167.1125	Tone 15 (162.2)	A	
14	Tactical	R5 TAC 6	UNASSIGNED	168.2375	Tone 15 (162.2)	168.2375	Tone 15 (162.2)	A	
15	EMS TAC	CALCORD	All Divisions	156.0750		156.0750	Tone 6 (156.7)	A	Medical A/G
16/20	AIR GUARD	GUARD	All Divisions	168.6250		168.6250	Tone 1 (110.9)	A	Emergency Only

5. Prepared by (Communications Unit)
 • Chris Perry COML(t) COMMUNICATIONS 951 833-7403

Incident Location
 County State Latitude Longitude
 W

DIVISION ASSIGNMENT LIST		1. Branch		2. Division/Group L - (Peak Fire)			
3. Incident Name Gasquet Complex		4. Operational Period Day Date: 08/06 to 08/07 Time: 0600-0600					
5. Operations Personnel							
Operations Chief	Nickie Washington / Darrell Miller		Division/Group Supervisor		Candice Kutrosky / Paul Mandolini (T)		
Branch Director			Air Attack Supervisor No.		Ron Serabia		
6. Resources Assigned This Period							
Strike Team/Task Force/ Resource Designator	Leader	Number Persons	Trans Needed	Drop Off PT/Time	Pick Up PT/Time		
HC21 White Mountain #1	Keith ^a Sergeant	19	No	ICP / 0630	ICP / 1900		
FALM North Zone #1	Stewart / Nealy	2	No	ICP / 0630	ICP / 1900		
FALM North Zone #2	Belmont / Ripple	2	No	ICP / 0630	ICP / 1900		
FALM North Zone #3 <i>to DIV W</i>	Mee / Dale	2	No	ICP / 0630	ICP / 1900		
FALM North Zone #4	Meadows / Hall	2	No	ICP / 0630	ICP / 1900		
WT2 Anderson <i>WORKING FOR Ground Support</i>	Robert Anderson	1	No	ICP / 0630	ICP / 1900		
WT2 Bowne	Micheal Bowne	1	No	ICP / 0630	ICP / 1900		
TFLD	Gregory Cox	1	No	ICP / 0630	ICP / 1900		
TFLD (T)	Dale Newby	1	No	ICP / 0630	ICP / 1900		
<i>ENG 3 Tri City 106</i>							
<i>ENG 6 San Jose Clara Br 32</i>							
7. Control Operations							
<p>Anchor fireline from G-O Road/Boundary Trail. Secure all fire south of Boundary Trail. Scout for opportunities to reach containment objectives. Utilize and share resources with DIV N as needed.</p>							
8. Special Instructions							
<p>Coordinate and order aircraft for retardant needs with Air Attack. Gather intel on fire perimeter and size.</p>							
9. Division/Group Communication Summary							
Function	Frequency	System	Channel	Function	Frequency	System	Channel
Command	See Comm Plan			Logistics			
Tactical Div/Group				Air to Ground			
Prepared By (Resource Unit Leader)		Approved By (Planning Sect. Ch.)		Date		Time	
Bill Kershaw		Steve Abbott		08/05/15		2100	

INCIDENT RADIO COMMUNICATIONS PLAN		Incident Name Gasquet Complex		Date/Time Prepared 08/05/2015 1800 hrs		Operational Period Date/Time 08/06/2015 08:07/2015 0600-0600 (24Hr)			
Ch #	Function	Channel Name	Assignment	RX Freq	RX Tone/NAC	TX Freq	Tx Tone/NAC	Mode	Remarks
1	Command	CMD 1	All Divisions	167.1000	Tone 15 (162.2)	169.7500	Tone 15 (162.2)	A	Ship Mtn
2	Command	CMD 2	UNASSIGNED	000.0000	Tone 15 (162.2)	000.0000	Tone 15 (162.2)	A	
3	Command	CMD 3	UNASSIGNED	000.0000	Tone 15 (162.2)	000.0000	Tone 15 (162.2)	A	
4	Backup Net	SRF ADM	All Divisions	168.1250		170.4750	Tone 12 (127.3)	A	Gordon Mtn
5	Tactical	NIFC T-5	DIV C	166.7250	Tone 15 (162.2)	166.7250	Tone 15 (162.2)	A	
6	Tactical	NIFC T-6	DIV E	166.7750	Tone 15 (162.2)	166.7750	Tone 15 (162.2)	A	
7	Tactical	NIFC T-7	DIV H	168.2500	Tone 15 (162.2)	168.2500	Tone 15 (162.2)	A	
8	Tactical	NIFC T-1	DIV L	168.0500	Tone 15 (162.2)	168.0500	Tone 15 (162.2)	A	
9	Tactical	NIFC T-3	DIV V	168.6000	Tone 15 (162.2)	168.6000	Tone 15 (162.2)	A	
10	Air to Ground	A/G-TAC	All Divisions	165.3875		165.3875		A	
11	Air to Ground	A/G-CMD	UNASSIGNED					A	
12	Tactical	R5 TAC 4	DIV W	166.5500	Tone 15 (162.2)	166.5500	Tone 15 (162.2)	A	
13	Tactical	R5 TAC 5	UNASSIGNED	167.1125	Tone 15 (162.2)	167.1125	Tone 15 (162.2)	A	
14	Tactical	R5 TAC 6	UNASSIGNED	168.2375	Tone 15 (162.2)	168.2375	Tone 15 (162.2)	A	
15	EMS TAC	CALCORD	All Divisions	156.0750		156.0750	Tone 6 (156.7)	A	Medical A/G
16/20	AIR GUARD	GUARD	All Divisions	168.6250		168.6250	Tone 1 (110.9)	A	Emergency Only

5. Prepared by (Communications Unit)
 • Chris Perry COML(t) COMMUNICATIONS 951 833-7403

State Latitude N Longitude W

DIVISION ASSIGNMENT LIST				1. Branch		2. Division/Group	
3. Incident Name				4. Operational Period		Day	
Gasquet Complex				Date: 08/06 to 08/07		Time: 0600-0600	
5. Operations Personnel							
Operations Chief		Nickie Washington / Darrell Miller		Division/Group Supervisor		Pedro Villa / David Woody (T)	
Branch Director				Air Attack Supervisor No.		Ron Serabia	
6. Resources Assigned This Period							
Strike Team/Task Force/ Resource Designator		Leader		Number Persons	Trans Needed	Drop Off PT/Time	Pick Up PT/Time
7. Control Operations							
Scout for opportunities to reach containment objectives. Utilize and share resources with DIV L as needed.							
8. Special Instructions							
Coordinate and order aircraft for retardant needs with Air Attack. Gather intel on fire perimeter and size.							
9. Division/Group Communication Summary							
Function	Frequency	System	Channel	Function	Frequency	System	Channel
Command	See Comm Plan			Logistics			
Tactical Div/Group				Air to Ground			
Prepared By (Resource Unit Leader)		Approved By (Planning Sect. Ch.)		Date		Time	
Bill Kershaw		Steve Abbott		08/05/15		2100	

INCIDENT RADIO COMMUNICATIONS PLAN		Incident Name Gasquet Complex		Date/Time Prepared 08/05/2015 1800 hrs	Operational Period Date/Time 08/06/2015 08:07/2015 0600-0600 (24Hr)				
Ch #	Function	Channel Name	Assignment	RX Freq	RX Tone/NAC	TX Freq	TX Tone/NAC	Mode Analog	Remarks
1	Command	CMD 1	All Divisions	167.1000	Tone 15 (162.2)	169.7500	Tone 15 (162.2)	A	Ship Mtn
2	Command	CMD 2	UNASSIGNED	000.0000	Tone 15 (162.2)	000.0000	Tone 15 (162.2)	A	
3	Command	CMD 3	UNASSIGNED	000.0000	Tone 15 (162.2)	000.0000	Tone 15 (162.2)	A	
4	Backup Net	SRF ADM	All Divisions	168.1250		170.4750	Tone 12 (127.3)	A	Gordon Mtn
5	Tactical	NIFC T-5	DIV C	166.7250	Tone 15 (162.2)	166.7250	Tone 15 (162.2)	A	
6	Tactical	NIFC T-6	DIV E	166.7750	Tone 15 (162.2)	166.7750	Tone 15 (162.2)	A	
7	Tactical	NIFC T-7	DIV H	168.2500	Tone 15 (162.2)	168.2500	Tone 15 (162.2)	A	
8	Tactical	NIFC T-1	DIV L	168.0500	Tone 15 (162.2)	168.0500	Tone 15 (162.2)	A	
9	Tactical	NIFC T-3	DIV V	168.6000	Tone 15 (162.2)	168.6000	Tone 15 (162.2)	A	
10	Air to Ground	A/G-TAC	All Divisions	165.3875		165.3875		A	
11	Air to Ground	A/G-CMD	UNASSIGNED					A	
12	Tactical	R5 TAC 4	DIV W	166.5500	Tone 15 (162.2)	166.5500	Tone 15 (162.2)	A	
13	Tactical	R5 TAC 5	UNASSIGNED	167.1125	Tone 15 (162.2)	167.1125	Tone 15 (162.2)	A	
14	Tactical	R5 TAC 6	UNASSIGNED	168.2375	Tone 15 (162.2)	168.2375	Tone 15 (162.2)	A	
15	EMS TAC	CALCORD	All Divisions	156.0750		156.0750	Tone 6 (156.7)	A	Medical A/G
16/20	AIR GUARD	GUARD	All Divisions	168.6250		168.6250	Tone 1 (110.9)	A	Emergency Only

S. Prepared by (Communications Unit)
 • Chris Perry COML(T) COMMUNICATIONS 951 833-7403

Incident Location
 County State Latitude Longitude W

DIVISION ASSIGNMENT LIST		1. Branch		2. Division/Group V – (Summit Fire)			
3. Incident Name Gasquet Complex		4. Operational Period Day Date: 08/06 to 08/07		Time: 0600-0600			
5. Operations Personnel							
Operations Chief	Nickie Washington / Darrell Miller		Division/Group Supervisor		UNSTAFFED		
Branch Director			Air Attack Supervisor No.		Ron Serabia		
6. Resources Assigned This Period							
Strike Team/Task Force/ Resource Designator	Leader		Number Persons	Trans Needed	Drop Off PT/Time	Pick Up PT/Time	
7. Control Operations Monitor by air.							
8. Special Instructions							
9. Division/Group Communication Summary							
Function	Frequency	System	Channel	Function	Frequency	System	Channel
Command	See Comm Plan			Logistics			
Tactical Div/Group				Air to Ground			
Prepared By (Resource Unit Leader)		Approved By (Planning Sect. Ch.)			Date		Time
Bill Kershaw		Steve Abbott			08/05/15		2100

INCIDENT RADIO COMMUNICATIONS PLAN		Incident Name Gasquet Complex		Date/Time Prepared 08/05/2015 1800 hrs	Operational Period Date/Time 08/06/2015 08/07/2015 0600-0600 (24Hr)				
Ch #	Function	Channel Name	Assignment	RX Freq	RX Tone/NAC (162.2)	TX Freq	TX Tone/NAC (162.2)	Mode Analog	Remarks
1	Command	CMD 1	All Divisions	167.1000	Tone 15 (162.2)	169.7500	Tone 15 (162.2)	A	Ship Mtn
2	Command	CMD 2	UNASSIGNED	000.0000	Tone 15 (162.2)	000.0000	Tone 15 (162.2)	A	
3	Command	CMD 3	UNASSIGNED	000.0000	Tone 15 (162.2)	000.0000	Tone 15 (162.2)	A	
4	Backup Net	SRF ADM	All Divisions	168.1250		170.4750	Tone 12 (127.3)	A	Gordon Mtn
5	Tactical	NIFC T-5	DIV C	166.7250	Tone 15 (162.2)	166.7250	Tone 15 (162.2)	A	
6	Tactical	NIFC T-6	DIV E	166.7750	Tone 15 (162.2)	166.7750	Tone 15 (162.2)	A	
7	Tactical	NIFC T-7	DIV H	168.2500	Tone 15 (162.2)	168.2500	Tone 15 (162.2)	A	
8	Tactical	NIFC T-1	DIV L	168.0500	Tone 15 (162.2)	168.0500	Tone 15 (162.2)	A	
9	Tactical	NIFC T-3	DIV V	168.6000	Tone 15 (162.2)	168.6000	Tone 15 (162.2)	A	
10	Air to Ground	A/G-TAC	All Divisions	165.3875		165.3875		A	
11	Air to Ground	A/G-CMD	UNASSIGNED					A	
12	Tactical	R5 TAC 4	DIV W	166.5500	Tone 15 (162.2)	166.5500	Tone 15 (162.2)	A	
13	Tactical	R5 TAC 5	UNASSIGNED	167.1125	Tone 15 (162.2)	167.1125	Tone 15 (162.2)	A	
14	Tactical	R5 TAC 6	UNASSIGNED	168.2375	Tone 15 (162.2)	168.2375	Tone 15 (162.2)	A	
15	EMS TAC	CALCORD	All Divisions	156.0750		156.0750	Tone 6 (156.7)	A	Medical A/G
16/20	AIR GUARD	GUARD	All Divisions	168.6250		168.6250	Tone 1 (110.9)	A	Emergency Only

5. Prepared by (Communications Unit)
• Chris Perry COML(t) COMMUNICATIONS 951 833-7403

Incident Location
County State Latitude Longitude
W

DIVISION ASSIGNMENT LIST				1. Branch		2. Division/Group	
3. Incident Name Gasquet Complex				4. Operational Period Day Date: 08/06 to 08/07 Time: 0600-0600			
5. Operations Personnel							
Operations Chief		Nickie Washington / Darrell Miller		Division/Group Supervisor		Glen Webb / Albert Ward (T) / Robert Allan (T)	
Branch Director				Air Attack Supervisor No.		Ron Serabia	
6. Resources Assigned This Period							
Strike Team/Task Force/ Resource Designator	Leader	Number Persons	Trans Needed	Drop Off PT/Time	Pick Up PT/Time		
HC21 NH #1	John Ross	20	No	ICP / 0630	ICP / 1900		
ENG2 Gasquest 214	David Woods	4	No	ICP / 0630	ICP / 1900		
ENG4 BRS 646	Barry Locke	4	No	ICP / 0630	ICP / 1900		
ENG6 Tonto 124701	Shawn O'Connell	7	No	ICP / 0630	ICP / 1900		
ENG6 American Fire 61	Matt Morrell	3	No	ICP / 0630	ICP / 1900		
ENG6 American Fire 62	Mani Morrell	3	No	ICP / 0630	ICP / 1900		
WT2 Gasquet VFD 75	Salena Cox	2	No	ICP / 0630	ICP / 1900		
WT2 SRF 15	Jacob McAdams	2	No	ICP / 0630	ICP / 1900		
WT2 49er Pressure	Bob Alvarez	2	No	ICP / 0630	ICP / 1900		
TFLD	Hyatt	1	No	ICP / 0630	ICP / 1900		
FALM NZ #3 (from DIV 4)							
7. Control Operations TFLD Cathleen Lowe Improve anchor point. Continue line production. Secure and hold burnout operation. Open 14N39A Road.							
8. Special Instructions Coordinate and order aircraft for retardant needs with Air Attack. Gather intel on fire perimeter and size.							
9. Division/Group Communication Summary							
Function	Frequency	System	Channel	Function	Frequency	System	Channel
Command	See Comm Plan			Logistics			
Tactical Div/Group				Air to Ground			
Prepared By (Resource Unit Leader)		Approved By (Planning Sect. Ch.)		Date		Time	
Bill Kershaw		Steve Abbott		08/05/15		2100	

INCIDENT RADIO COMMUNICATIONS PLAN		Incident Name Gasquet Complex		Date/Time Prepared 08/05/2015 1800 hrs	Operational Period Date/Time 08/06/2015 08/07/2015 0600-0600 (24Hr)				
Ch #	Function	Channel Name	Assignment	RX Freq	RX Tone/NAC	TX Freq	TX Tone/NAC	Mode Analog	Remarks
1	Command	CMD 1	All Divisions	167.1000	Tone 15 (162.2)	169.7500	Tone 15 (162.2)	A	Ship Mtn
2	Command	CMD 2	UNASSIGNED	000.0000	Tone 15 (162.2)	000.0000	Tone 15 (162.2)	A	
3	Command	CMD 3	UNASSIGNED	000.0000	Tone 15 (162.2)	000.0000	Tone 15 (162.2)	A	
4	Backup Net	SRF ADM	All Divisions	168.1250		170.4750	Tone 12 (127.3)	A	Gordon Mtn
5	Tactical	NIFC T-5	DIV C	166.7250	Tone 15 (162.2)	166.7250	Tone 15 (162.2)	A	
6	Tactical	NIFC T-6	DIV E	166.7750	Tone 15 (162.2)	166.7750	Tone 15 (162.2)	A	
7	Tactical	NIFC T-7	DIV H	168.2500	Tone 15 (162.2)	168.2500	Tone 15 (162.2)	A	
8	Tactical	NIFC T-1	DIV L	168.0500	Tone 15 (162.2)	168.0500	Tone 15 (162.2)	A	
9	Tactical	NIFC T-3	DIV V	168.6000	Tone 15 (162.2)	168.6000	Tone 15 (162.2)	A	
10	Air to Ground	A/G-TAC	All Divisions	165.3875		165.3875		A	
11	Air to Ground	A/G-CMD	UNASSIGNED					A	
12	Tactical	R5 TAC 4	DIV W	166.5500	Tone 15 (162.2)	166.5500	Tone 15 (162.2)	A	
13	Tactical	R5 TAC 5	UNASSIGNED	167.1125	Tone 15 (162.2)	167.1125	Tone 15 (162.2)	A	
14	Tactical	R5 TAC 6	UNASSIGNED	168.2375	Tone 15 (162.2)	168.2375	Tone 15 (162.2)	A	
15	EMS TAC	CALCORD	All Divisions	156.0750		156.0750	Tone 6 (156.7)	A	Medical A/G
16/20	AIR GUARD	GUARD	All Divisions	168.6250		168.6250	Tone 1 (110.9)	A	Emergency Only

5. Prepared by (Communications Unit)
 • Chris Perry COML(t) COMMUNICATIONS 951 833-7403

Incident Location
 County State Latitude Longitude W

AIR OPERATIONS SUMMARY

PREPARED BY: Ted Visser *Ted Visser*

PREPARED DATE/TIME: 08/05/15 1900

1. INCIDENT NAME: Gasquet Complex 2. OPERATIONAL PERIOD DATE: 08/06/15 START TIME: 0700 END TIME: 2000 SUNRISE: 0615 SUNSET: 2030

3. REMARKS (Safety Notes, Hazards, Air Operations Special Equipment, etc.) Thunderstorms, erratic winds. Low wires, cables, power lines. Divisions, contact Helibase for all aviation needs, include coordinates of possible helispot/unimproved landing locations. Possible smoke concerns.

Track all retardant usage and location if used. Do not dip from lakes near 41 35.000 x 123 43.00 Bear Fire Div E, 41 48.928 123 44.678 Coon Fire Div C, 41 45.786 123 57.709 Feeder Fire Div W, 41 35.065 123 50.726 Peak Fire Div L, 41 33.065 123 46.134 Summit Fire Div V, 41 35.000 123 47.800 Williams Fire Div H, 41 35.290 123 45.621

4. MEDEVAC A/C: See Med Plan

5. TFR: 5/7114 Radius: 10 NM Altitude: 9000 MSL Centerpoint: N 41 40.00 W 123 50.00 Freq: 128.0750

6. PERSONNEL	Phone	7. FREQUENCIES	AM	FM	8. FIXED-WING	# Avail / Type/ Make-Model / FAA N# / Base(s)
AOBD: Ted Visser	619-981-2409	AIR/AIR FW:		166.4500	Airtankers:	Available through Dispatch SEAT 898, A-9 SEAT 820, A-10
ASGS: Galen Young	575-574-8720	AIR/AIR RW:	128.0750		Leadplanes:	Available through Dispatch
ATGS: Ron Serabia	619-549-4787	AIR/GROUND CMD: AIR/GROUND TAC:		165.3875	ATBase:	
ATGS:		COMMAND: RX: TX:		167.1000 169.7500 Tone 15 162.2	ATGS Aircraft:	N 4579N, A-6 N 1596G, A-8
HEB1:		DECK:			AAB:	
HEB2:		AIR GUARD:		168.6250		Cave- HOS Trlr., E-2, Chris Long, 208-539-7108 Cave- 49er WT, E-41 Bobby Alvarez, 619-300-0801

9. HELICOPTERS (Use Additional Sheets As Necessary)

FAA N#	TY	MAKE/MODEL	BASE	AVAILABLE	START	REMARKS	FAA N#	TY	MAKE/MODEL	BASE	AVAILABLE	START	REMARKS

MEDICAL PLAN	1. INCIDENT NAME Gasquet Complex	2. DATE PREPARED 8/5/15	3. TIME PREPARED 1730	4 OPERATIONAL PERIOD 8/6-7/2014 0600-0600
---------------------	---	-----------------------------------	---------------------------------	--

5. INCIDENT MEDICAL AID STATIONS

MEDICAL AID STATIONS	LOCATION	PARAMEDIC	
Medical Unit	Gasquet ICP	YES	NO
			X

TRANSPORTATION

A. Air Ambulances

NAME	ADDRESS	PHONE	PARAMEDIC	
			YES	NO
Mercy Air Ambulance 105	Medford, Oregon	1-800-903-9000	X	
CHP H-14 (Day/Night, Hoist)	Redding Airport	(530) 842-3515	X	
Cal Fire Kneeland Helitack H-102 (short haul)	Kneeland Station	(707) 444-2863		X
Coast Guard (Day/Night, Hoist)	Air Station Humboldt Bay	(707) 839-6100		X
Reach 5 Air Medical	Redding CA	(530) 351-5148	X	
PHI Air Medical	Redding CA	1-800-597-9571	X	

B. Ground Ambulances

Gasquet Fire Protection District V.F.D.	Fire House Rd Gasquet CA 95543	Communications		X
Del Norte Ambulance, Station 2	2600 Morehead Rd Crescent City CA	Communications	X	

7. HOSPITALS

NAME	ADDRESS	TRAVEL TIME		PHONE	HELIPAD		BURN CENTER	
		AIR	GRND		YES	NO	YES	NO
		Sutter Coast Hospital	800 E Washington Crescent City CA. N. 41 46.454 x W 124 11.537			25min	ER: 707-464-8888 Gen: 707-464-8511	
Mercy Med. Center Level 3 Trauma	914 Pine St. Mt. Shasta, CA. N. 40 34.14 x W. 122 23.97	45m	2.5hr	(530)926-9360	X			X
Rogue Valley Med Center Level 2 Trauma	2825 Barnett Rd. Medford, OR. N. 42 19.092 W. 122 49.833	30m	2.5hr	(541)789-7100	X			X
UC Davis Med Center Level 1 Trauma Burn Center	2315 Stockton Blvd. Sacramento, CA N. 38 33.3 x W. 121 27.3	2hr	7.0hr	(916) 734-3636 Burn Center (916) 734-3790 ER	X		X	

8. MEDICAL EMERGENCY PROCEDURES

In the event of a medical emergency provide the following information to your Division or Happy Camp Communications on Command.

1. Declare the nature of the emergency.
 - a. Medical injury/illness?
 - b. Is injury/illness life threatening?
2. If life threatening, then request that the designated frequency be cleared for emergency traffic.
3. Identify the on-scene Point of Contact (POC) by resource and last name (i.e POC is TFLD Smith).
4. Identify nature of incident, number injured, patient assessment(s) and location (geographic and GPS coordinates).
5. Identify on-scene medical personnel by position and name (i.e EMT Jones).
6. Identify preferred method of patient transport.
7. Request any additional resources and/or equipment needed
8. Document all information received and transmitted on the radio or phone.
9. Identify any changes in the on-scene Point of Contact or medical personnel as they occur.

INJURY REPORTING PROCEDURES

NATURE OF INJURY _____ # of Patients _____

TRANSPORTATION NEEDED Air _____ Ground _____

REM Needed Y ___ N ___ Estimated Air Temp _____

LAT _____ LONG _____ Elevation _____

Specific Hazards In Area _____

PATIENT UNIT ID _____

REMINDER: DO NOT GIVE PT NAME OVER RADIO

IS MEDICAL PERSONNEL WITH PATIENT: YES ___ NO ___

AGE ___ SEX: MALE ___ FEMALE ___

ALL EMERGENCIES---Secure the area and identify witnesses for later investigation. Keep an accurate log of events.
 Medical Unit, Zone 1 (949) 812-8736, (714)334-4966 Office (530)493-1506
 Medical Unit, Zone 2 (916) 591-8802 (916) 215-2732

ICS 206 8-78	9. PREPARED BY (MEDICAL UNIT LEADER) Gena Fowlkes MEDL(t)	10. REVIEWED BY (SAFETY OFFICER) John Bates SOF2 
---------------------	---	--



Incident within an Incident Action Plan

When the scope or complexity of the emergency exceeds division resource needs

This plan is designed to identify the initial actions that should be taken by the first arriving personnel on a serious accident. This person may be a single resource, engine boss, or a crew boss. Accidents or incidents within an incident happen rapidly and require sound, calm initial decisions to handle the problem, while still focusing on the main incident. The following checklist provides some key thoughts and actions.

The first arriving person to any accident should notify their Division Supervisor, or the Div Sup assigned to that location.

Advise of the critical information needed:

- Accident scene safety assessment and advise incoming personnel
- Number of injuries and their severity
- Special equipment needs (extrication, low/high angle rescue, fire protection or suppression)
- Assist the injured as necessary without endangering yourself or other personnel
- Do not move trauma victims unless their safety is in jeopardy
- Utilize PINK pages of the Incident Response Pocket Guide (IRPG) for patient assessment/medical procedures

Remain aware of surroundings and delegate personnel to monitor the main fire

The Division Supervisor will assume command of the accident/incident scene upon arrival. The following list outlines the general duties and tasks that should be completed on most accidents/incidents.

1. Delegate division oversight to another Division Supervisor or other qualified person.
2. Request a clear frequency from Comm and consider switching to designated Emergency Tactical (Incident Comm will notify the MEDL who will initiate the medical plan for injuries)
3. Order/delegate resources appropriate for the accident/incident (crew EMT's, Line EMT's or Line Medics, rescue equipment, patient transport needs, manpower)
4. Notify Operations Section Chief and Safety Officer on all accidents/incidents.
5. Begin to document the event accurately and completely. Use ICS form 201 if the event is large or complex.
6. Protect the scene for Investigators

Reference the full Incident Medical Emergency Plan for additional



Incident within an Incident Action Plan

Position Assignment Supportive Actions

Division Supervisor

- See items 1-6 on page one
- If unable to access accident/incident location, delegate command to a closer qualified resource

Medical Unit Leader

- Respond to Comm Unit as soon as possible
- Coordinate with Division Supervisor to ensure proper resources are rapidly ordered
- Assign a MEDL to the scene and other positions to support the response as needed
- Monitor condition updates of patient(s) and coordinate response with Operations

Communications Unit Leader

- Maintain clear radio traffic and monitor communications to support response
- Recommend appropriate security and investigative process
- Assess the need for critical Incident Stress Response

Safety Officer

- Provide for Safety personnel on scene as needed
- Recommend appropriate security and investigative process
- Assess the need for critical Incident Stress Response

Air Attack Supervisor

- Obtain coordinates of the emergency location
- Coordinate air-medical response
- Assist and support the designated Point of Contact with communications and coordination of the emergency response as necessary

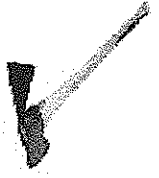
IC, Command & General Staff

- Manage the emergency and direct specific responsibilities to individual positions to provide an appropriate response
- Notify the host unit and host dispatch center of the size-up information
- Constantly monitor and assess the appropriate response and adapt direction as needed
- Submit all documentation pertaining to the emergency to the Plans Chief

Reference the full Incident Medical Emergency Plan for additional

Incident:
Gasquet Complex

Operational Period:
8/6/15 0600-0600



MAJOR HAZARDS AND RISKS

- | | |
|--|--|
| <ul style="list-style-type: none">• Aviation Operations• Weather is getting dryer, increase in fire behavior• Dehydration—Drink lots of water• Hazard trees and snags• Chainsaw Operations | <ul style="list-style-type: none">• Driving-- Lights on, seatbelts, drive defensively, narrow roads, use chock blocks• Steep rocky, rough terrain--falls/slips• Firing Operations• Poison Oak |
|--|--|

REMEMBER!!

USE THE INCIDENT RESPONSE POCKET GUIDE DAILY

A PROCEDURAL APPROACH TO SAFETY

In a fire situation there are subjective hazards that we as firefighters create, and there are objective hazards such as fire entrapment, snags, rolling debris, and terrain that are inherent to firefighting. The subjective hazards we have control over just by using our attitudes and abilities. The objective hazards we cannot completely eliminate. The possibility of injury or entrapment is always there, the probability may be large or small. We must take steps to reduce the risks associated with our actions. By using a set procedure each operational period, we can minimize exposure to hazards and better ensure our safety by the following steps.

- Determine what the assignment is
- Assess the situation
- Identify the hazards
- Analyze the risks
- Implement steps to ensure safety
- Re-analyze the situation as it changes



Safety Officers

James Aragon | John Bates | Fred Hernandez (r)

Line Safety Officers

On order

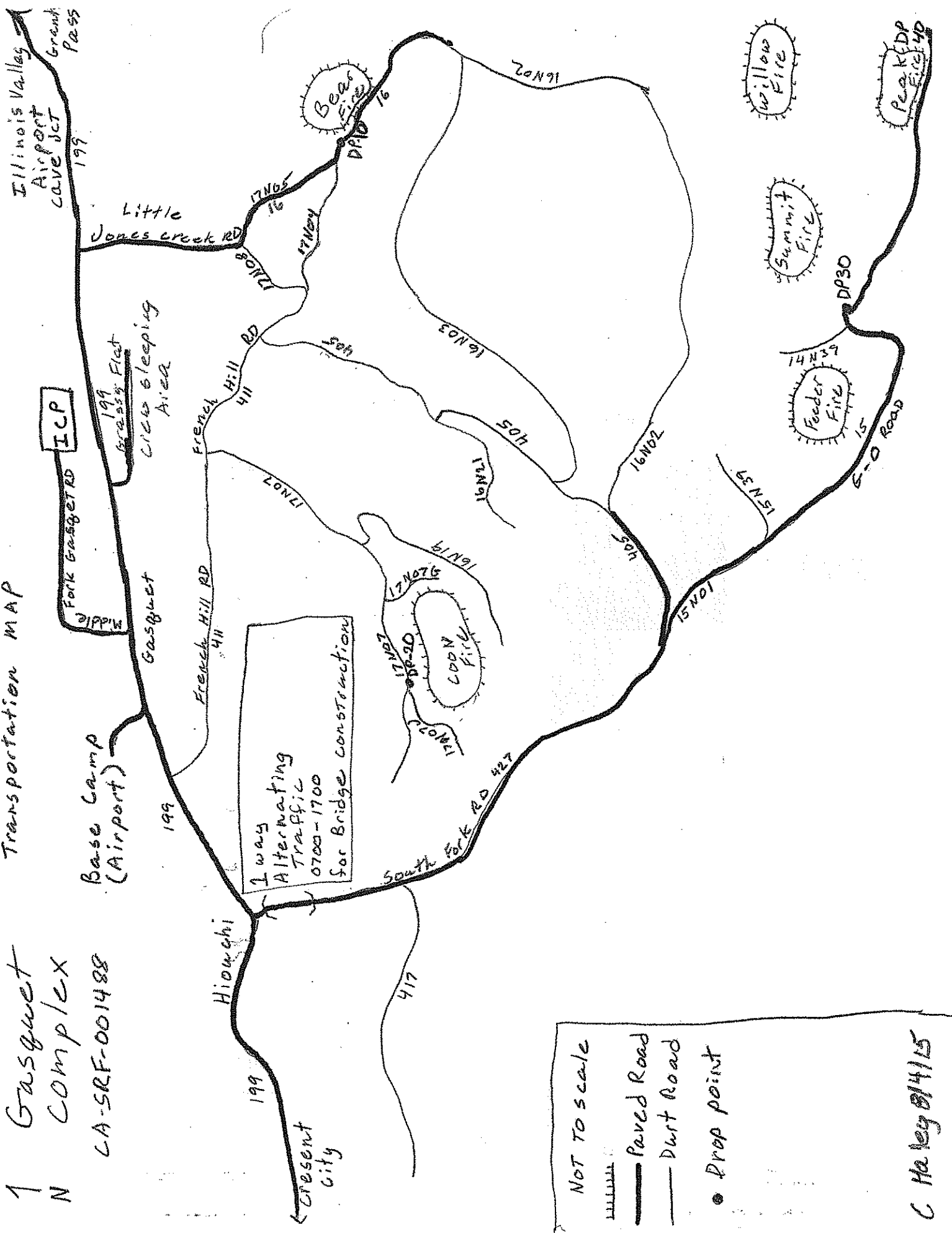
INCIDENT SAFETY ANALYSIS 215a

- Wednesday, August 05, 2015

8. Location	9. Hazard	6. Control or Abatement Action (Engineering, Administrative, PPE, Avoidance, Education, etc)
All	Poisonous Plants	<ul style="list-style-type: none"> ~ Identify and Avoid hazard areas ~ Launder clothing ~ Shower frequently
All	Driving & Traffic	<ul style="list-style-type: none"> ~ Practice "Defensive Driving" techniques traveling on all roads and city streets, mitigation strategy includes: <ul style="list-style-type: none"> ~ Use spotters when backing ~ Honk horn to alert personnel when backing ~ Always use headlights ~ Yield to pedestrians and bicycles ~ Observe posted speed limits ~ Follow 3 second rule of following distance when driving ~ Use chock blocks, turn wheels into hill
All	Hazard Trees	<ul style="list-style-type: none"> ~ Follow "Hazard Tree Safety" guidelines, IRPG pages 20 & 21 ~ Post lookouts, or use a spotter in mop-up areas with personnel ~ Don't park vehicles or take breaks in high concentrations of hazard trees ~ Establish trigger points for disengagement during high wind events
All	Chain Saw Operations	<ul style="list-style-type: none"> ~ Follow "Hazard Tree Safety" guidelines, IRPG pages 20 & 21 ~ Look up, down around for hazard tree indicators ~ Only fell and buck trees within your expertise, and training ~ Follow "Procedural Felling Operations" on page 89 in IRPG ~ Do not fall trees during high wind events
All	Firing Operations & Devices	<ul style="list-style-type: none"> ~ Only personnel trained in the use of each device will be authorized to use firing equipment. ~ Ensure all personnel are aware of firing operation that may affect them. ~ Wear appropriate PPE. ~ Ensure aerial/ground ignition plans have been adequately developed and personnel are briefed.
All	Injury & Medical Emergency	<ul style="list-style-type: none"> ~ Assist injured employee appropriate medical care ~ Use EMT's on Division for initial care ~ Follow medical protocol as outlined in ICS-206

1 Gasquet
N CA-SRF-001488

Transportation MAP



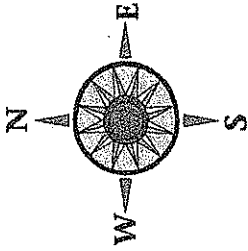
NOT TO SCALE

- Dotted line
- Paved Road
- Dirt Road
- Drop point

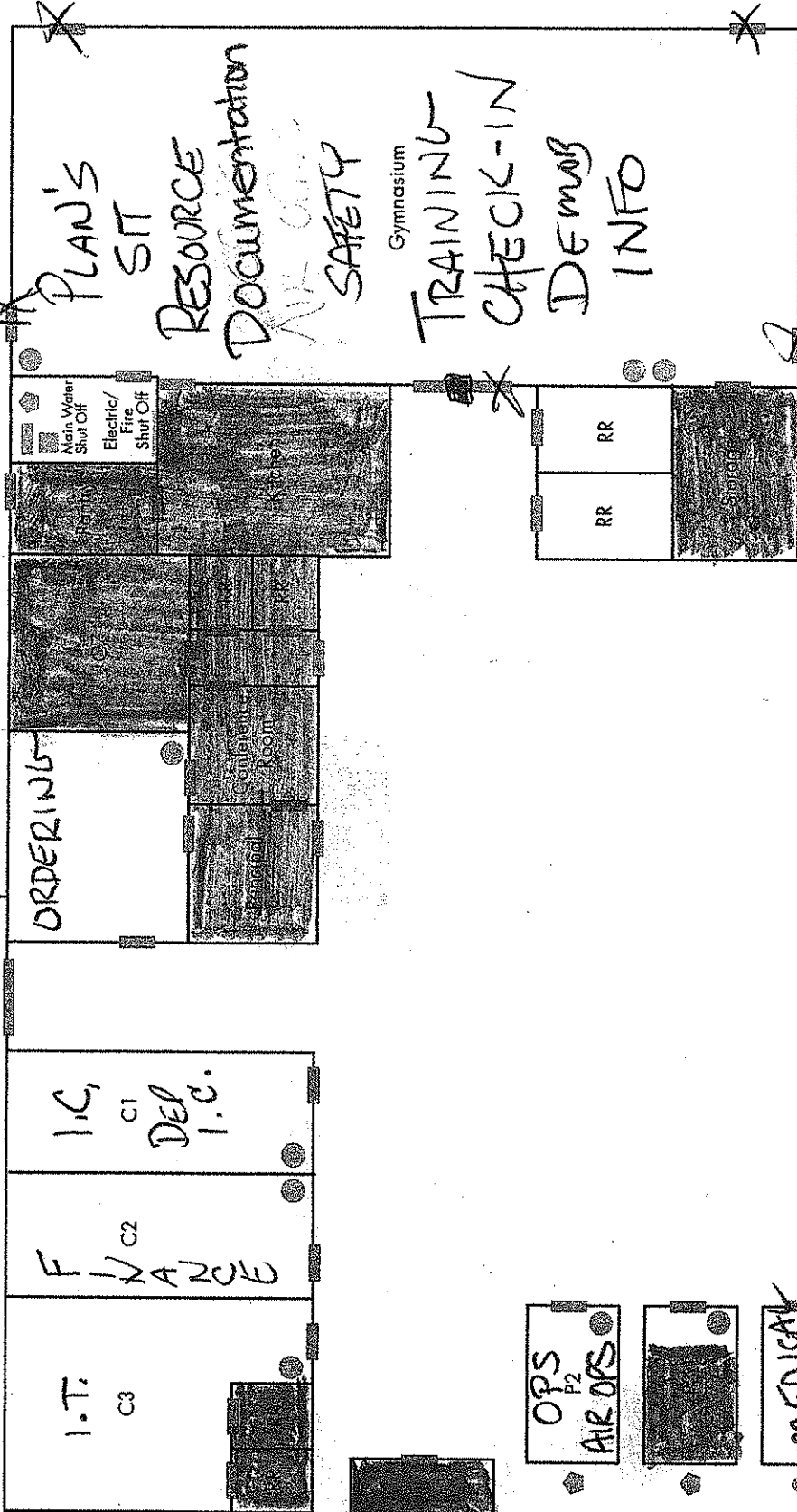
C. Hailey 8/14/15

Mountain School
 55 Azalea Road
 Gasket, CA 95543
 (707) 457-3211

ICP
ADMIN



Knox Box



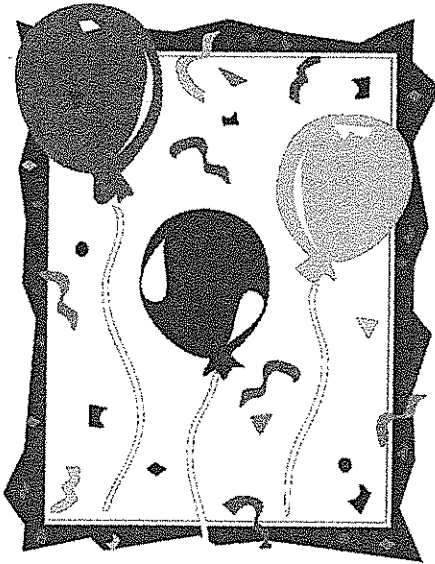
071410/Site Maps/Del Norte

Bus Barn

8/5/2015 1100

SK

TRAINING MESSAGE – August 6



**Attention Trainees
& Evaluators**

Checking in?

Don't forget to see your

***Training Specialist - Ann Hutchinson
Next to Check-In/Dmob***

***A good training experience can make all the
difference in the future safety of firefighters,
and in an individual's career.***

UNIT LOG	1. Incident Name Gasquet Complex	2. Date Prepared	3. Time Prepared
4. Unit Name/Designators	5. Unit Leader (Name and Position)		6. Operational Period
7. Personnel Roster Assigned			
Name	ICS Position	Home Base	
8. Activity Log			
Time	Major Events		
9. Prepared by (Name and Position)			