

**Gasquet Complex**  
**CA-SRF-001488**

08/08/2015

0600-0600

NAD 1983 UTM Zone 10N

Index Page

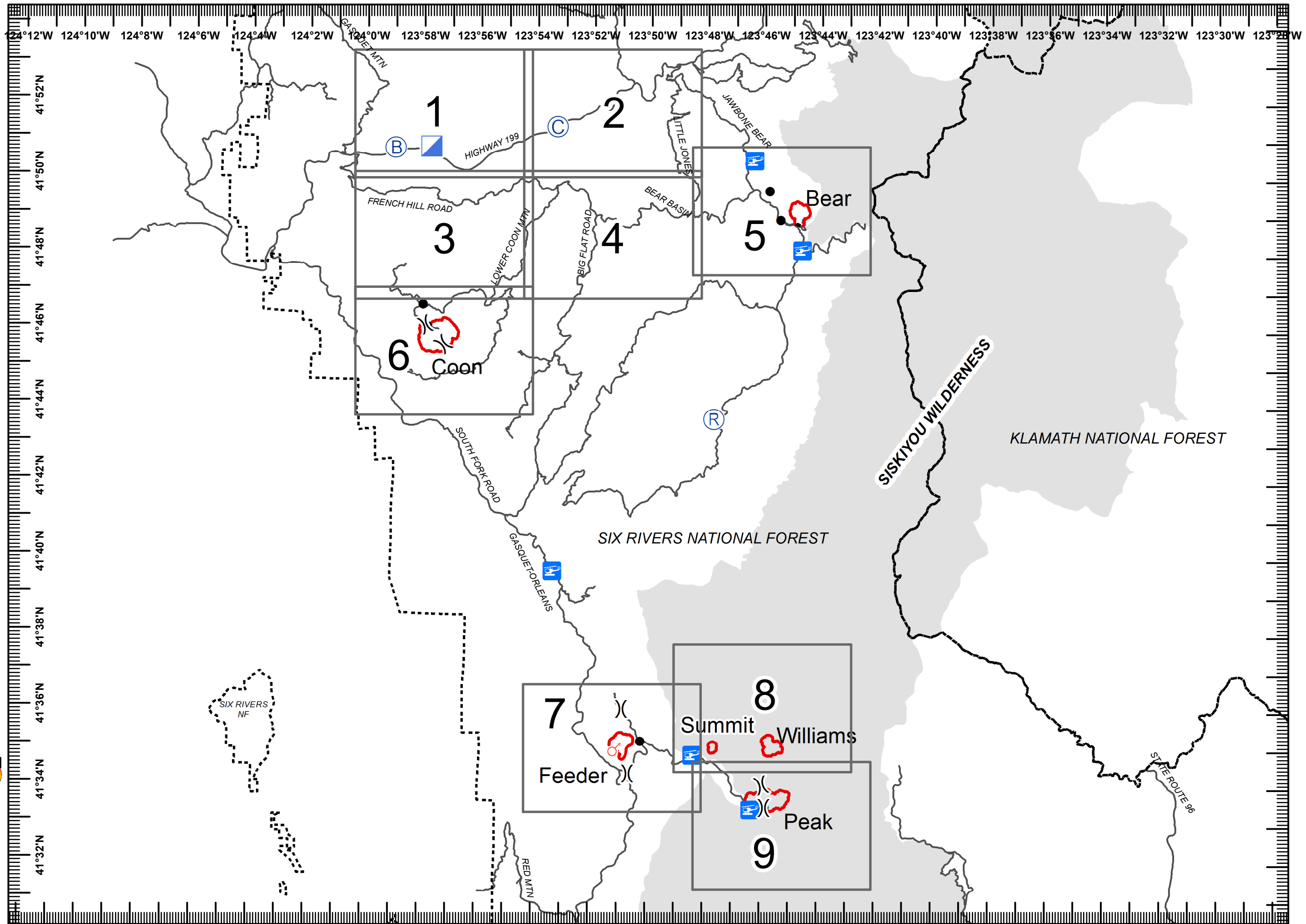
**Legend**

- Division
- Branch
- Drop Point
- Fire Origin
- Spot Fire
- Helispot
- Staging Area
- Water Source
- Helibase
- Incident Command Post
- Camp
- Incident Base
- Hot Spot
- Repeater
- Safety Zone
- Fire Location
- Fire Location Contained
- Unimproved Landing Zone
- Restricted Water Source
- Pump
- Gate
- Uncontrolled Fire Edge
- Completed Dozer Line
- Completed Hand Line
- Road as Completed Line
- Completed Line
- Forest Boundary



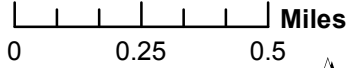
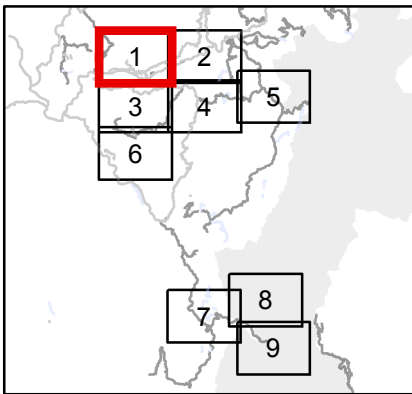
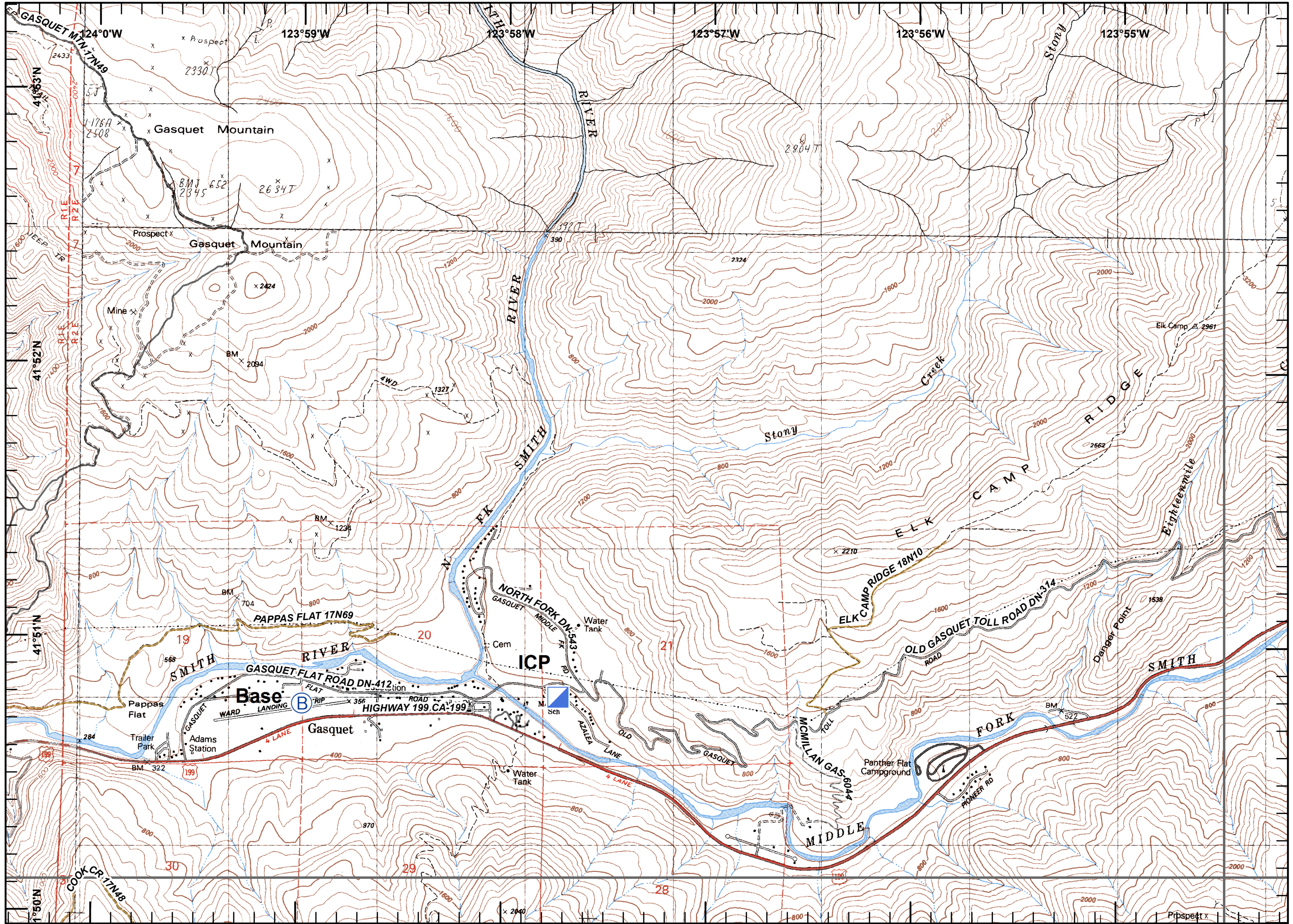
0 1.5 3 Miles

A.S.  
 August 07, 2015  
 2340



**Legend**

- Division
- Branch
- Drop Point
- Fire Origin
- Spot Fire
- Helispot
- Staging Area
- Water Source
- Helibase
- Incident Command Post
- Camp
- Incident Base
- Hot Spot
- Repeater
- Safety Zone
- Fire Location
- Fire Location Contained
- Unimproved Landing Zone
- Restricted Water Source
- Pump
- Gate
- Uncontrolled Fire Edge
- Completed Dozer Line
- Completed Hand Line
- Siskiyou Wilderness
- Completed Line
- Wilderness Boundary

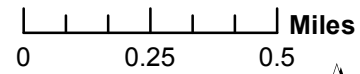
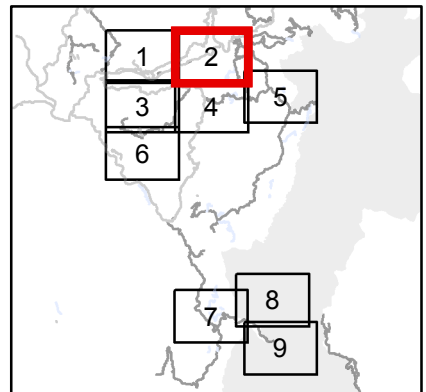
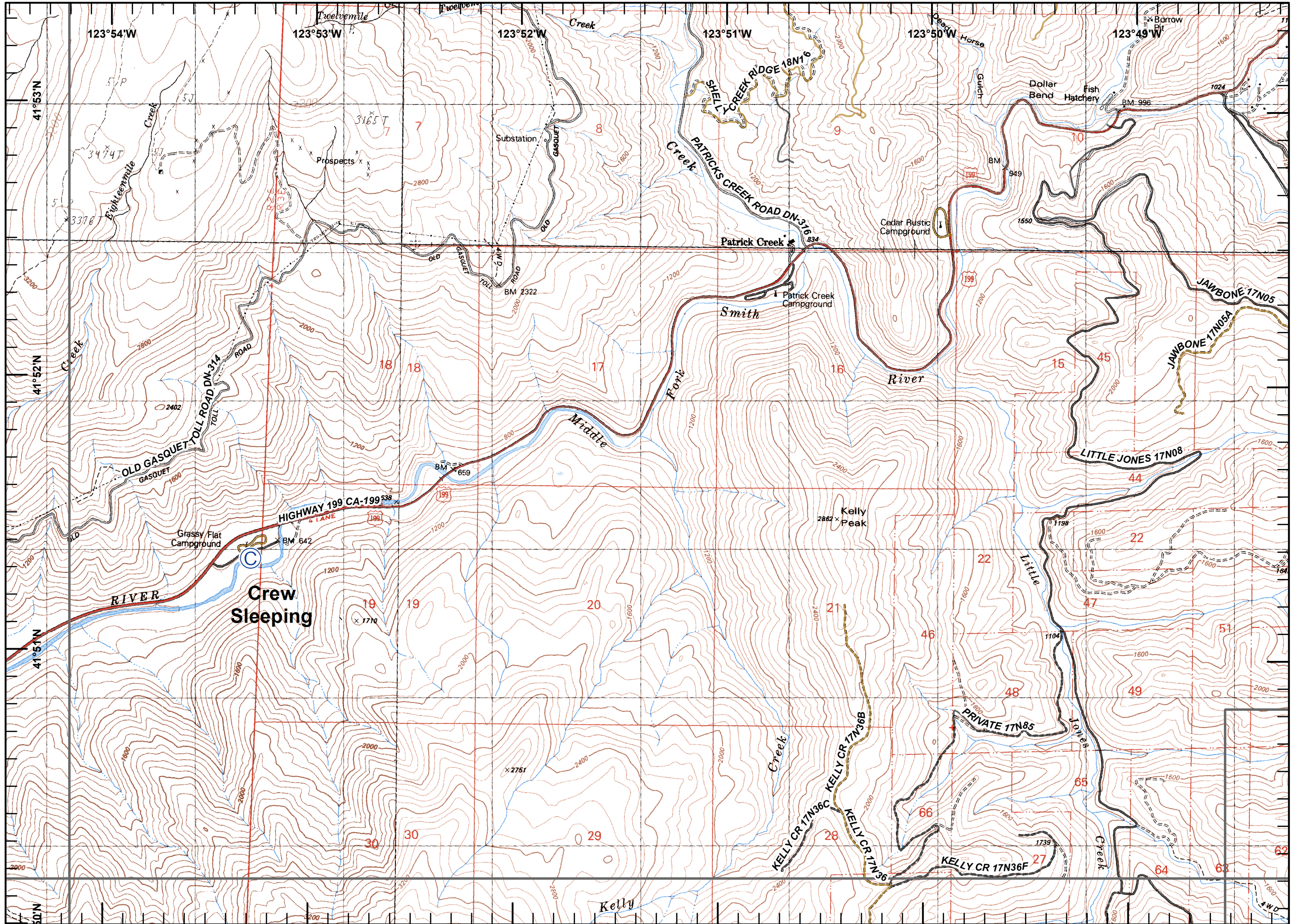


A.S.  
 August 08, 2015  
 0030



Legend

- Division
- Branch
- Drop Point
- Fire Origin
- Spot Fire
- Helispot
- Staging Area
- Water Source
- Helibase
- Incident Command Post
- Camp
- Incident Base
- Hot Spot
- Repeater
- Safety Zone
- Fire Location
- Fire Location Contained
- Unimproved Landing Zone
- Restricted Water Source
- Pump
- Gate
- Uncontrolled Fire Edge
- Completed Dozer Line
- Completed Hand Line
- Siskiyou Wilderness
- Completed Line
- Wilderness Boundary

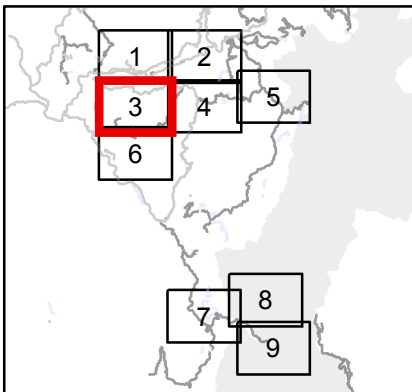
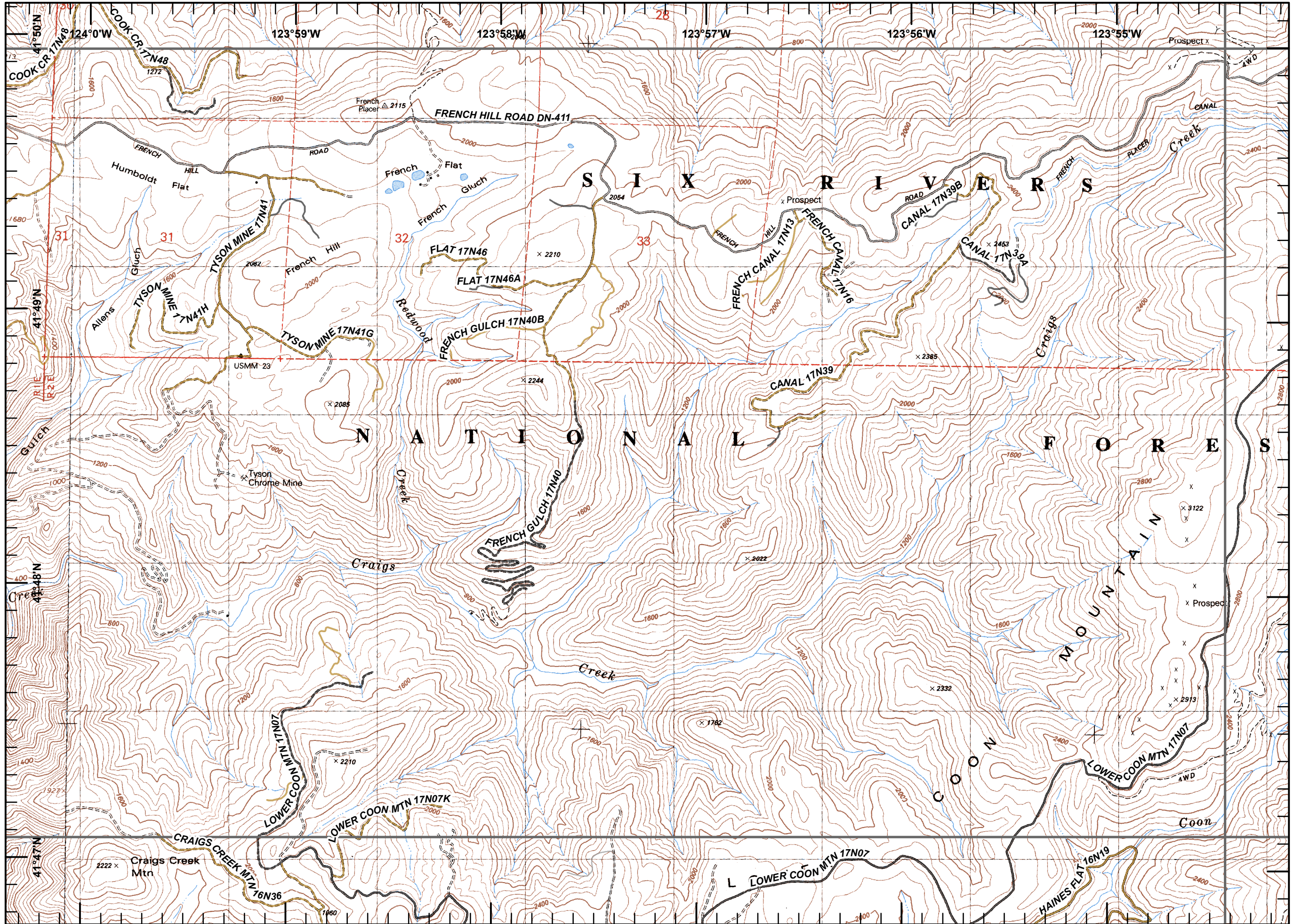


A.S.  
 August 08, 2015  
 0030



**Legend**

- Division
- Branch
- Drop Point
- Fire Origin
- Spot Fire
- Helispot
- Staging Area
- Water Source
- Helibase
- Incident Command Post
- Camp
- Incident Base
- Hot Spot
- Repeater
- Safety Zone
- Fire Location
- Fire Location Contained
- Unimproved Landing Zone
- Restricted Water Source
- Pump
- Gate
- Uncontrolled Fire Edge
- Completed Dozer Line
- Completed Hand Line
- Siskiyou Wilderness
- Completed Line
- Wilderness Boundary



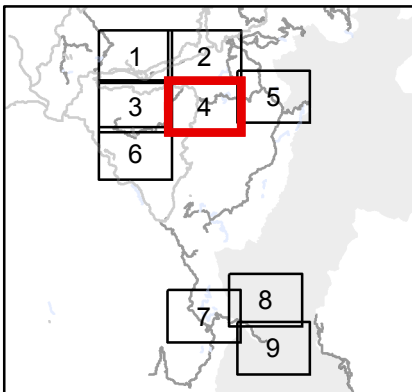
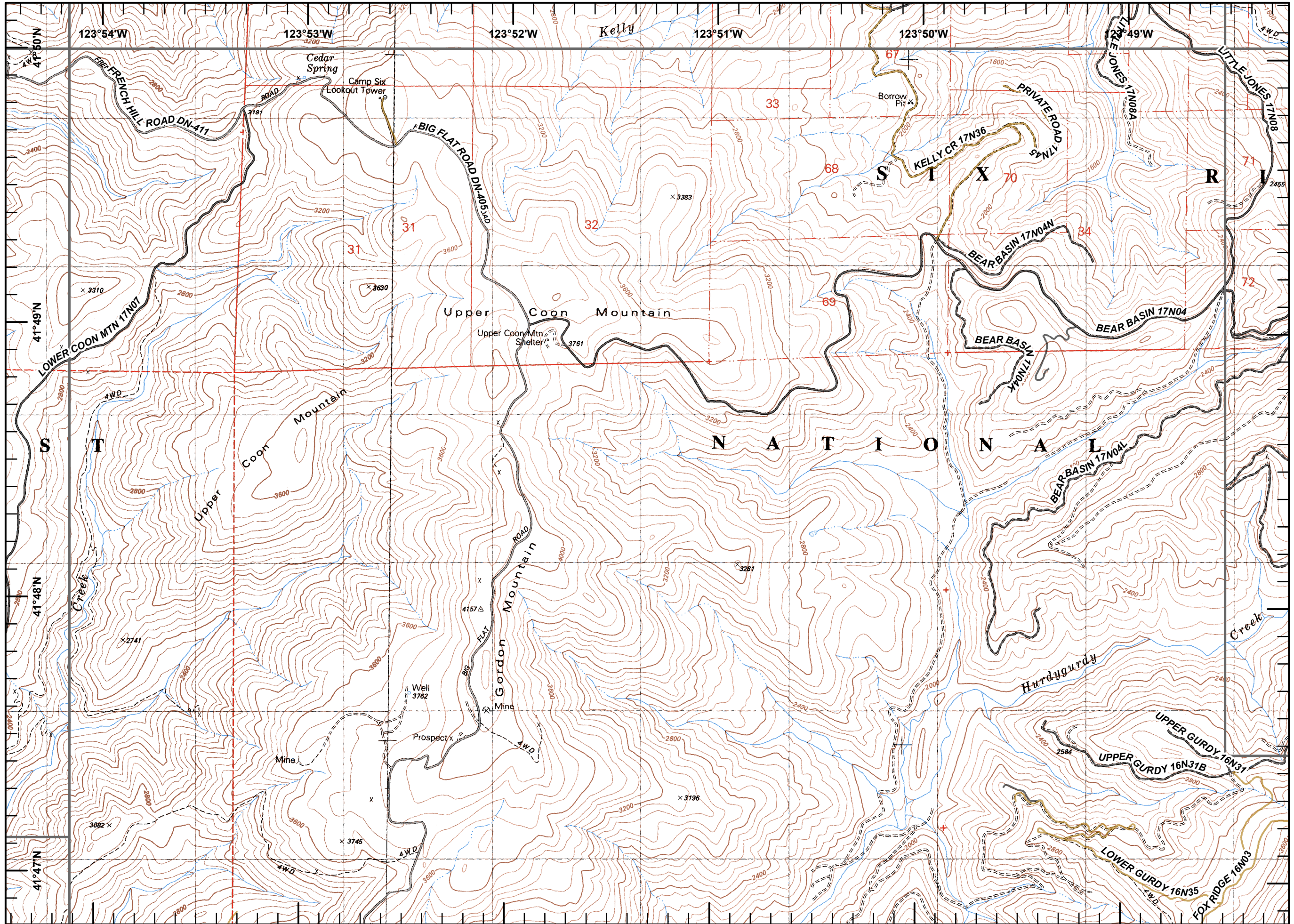
0 0.25 0.5 Miles

A.S.  
 August 08, 2015  
 0030



Legend

- Division
- Branch
- Drop Point
- Fire Origin
- Spot Fire
- Helispot
- Staging Area
- Water Source
- Helibase
- Incident Command Post
- Camp
- Incident Base
- Hot Spot
- Repeater
- Safety Zone
- Fire Location
- Fire Location Contained
- Unimproved Landing Zone
- Restricted Water Source
- Pump
- Gate
- Uncontrolled Fire Edge
- Completed Dozer Line
- Completed Hand Line
- Siskiyou Wilderness
- Completed Line
- Wilderness Boundary



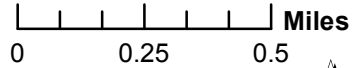
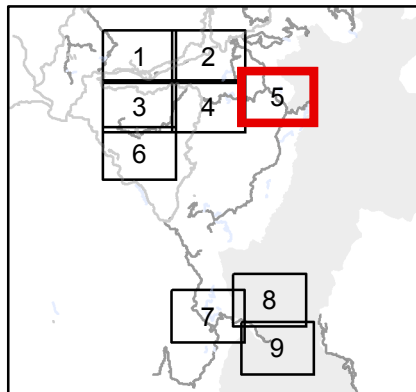
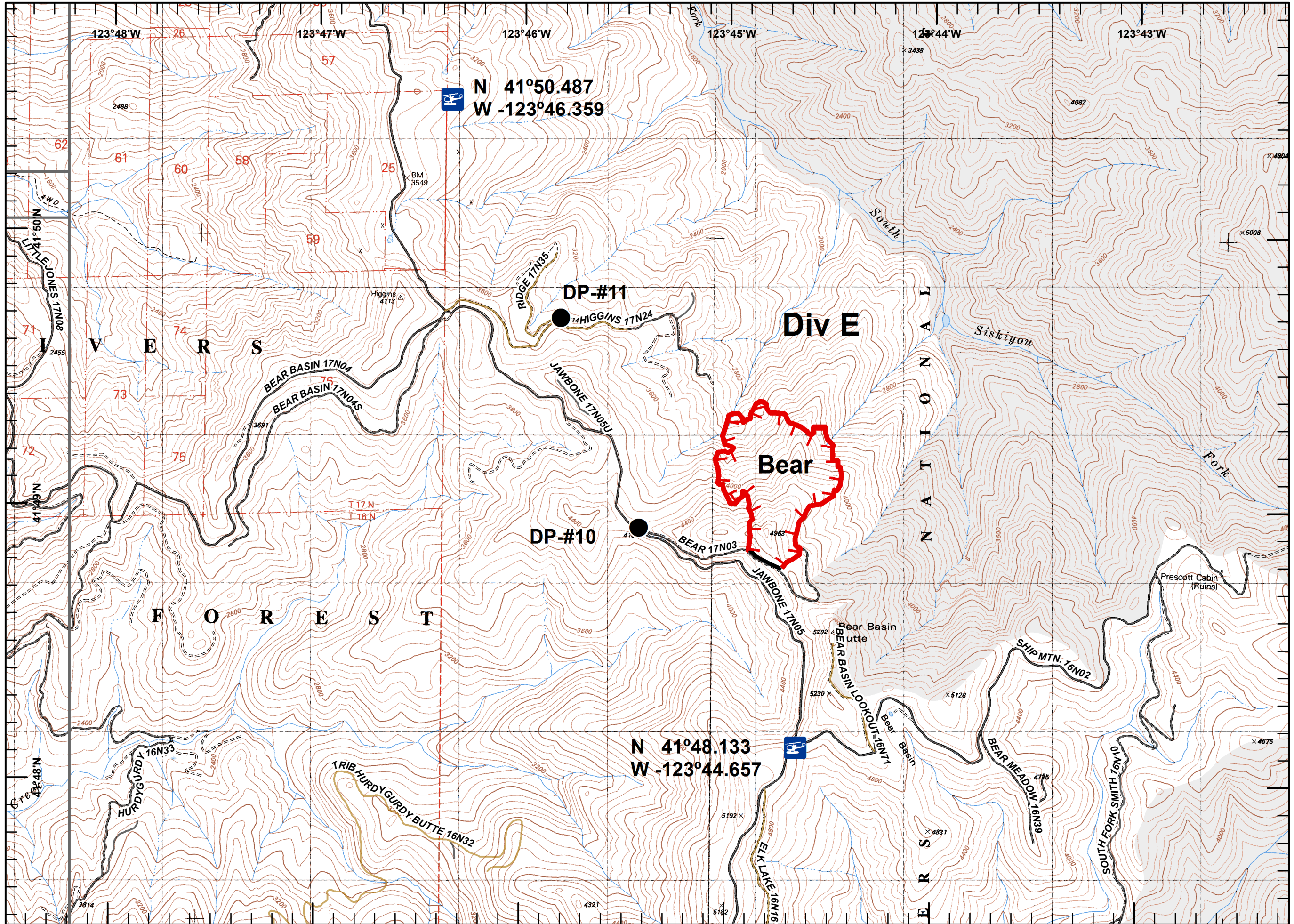
0 0.25 0.5 Miles

A.S.  
 August 08, 2015  
 0030



Legend

- Division
- Branch
- Drop Point
- Fire Origin
- Spot Fire
- Helispot
- Staging Area
- Water Source
- Helibase
- Incident Command Post
- Camp
- Incident Base
- Hot Spot
- Repeater
- Safety Zone
- Fire Location
- Fire Location Contained
- Unimproved Landing Zone
- Restricted Water Source
- Pump
- Gate
- Uncontrolled Fire Edge
- Completed Dozer Line
- Completed Hand Line
- Siskiyou Wilderness
- Completed Line
- Wilderness Boundary

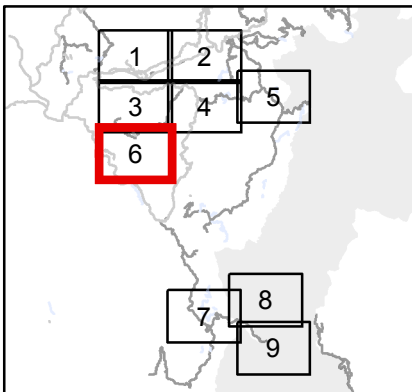
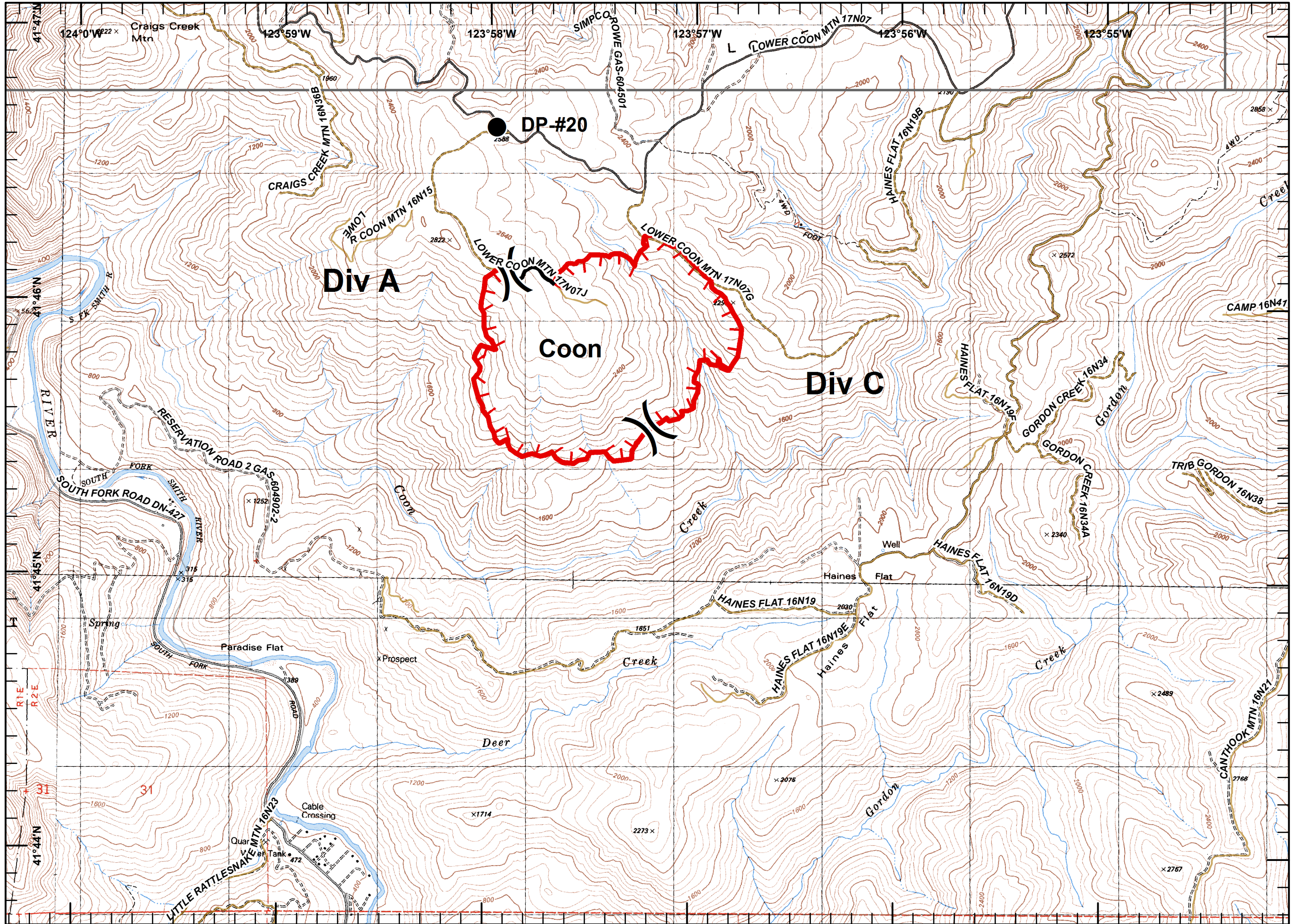


A.S.  
 August 08, 2015  
 0030



**Legend**

- Division
- Branch
- Drop Point
- Fire Origin
- Spot Fire
- Helispot
- Staging Area
- Water Source
- Helibase
- Incident Command Post
- Camp
- Incident Base
- Hot Spot
- Repeater
- Safety Zone
- Fire Location
- Fire Location Contained
- Unimproved Landing Zone
- Restricted Water Source
- Pump
- Gate
- Uncontrolled Fire Edge
- Completed Dozer Line
- Completed Hand Line
- Siskiyou Wilderness
- Completed Line
- Wilderness Boundary



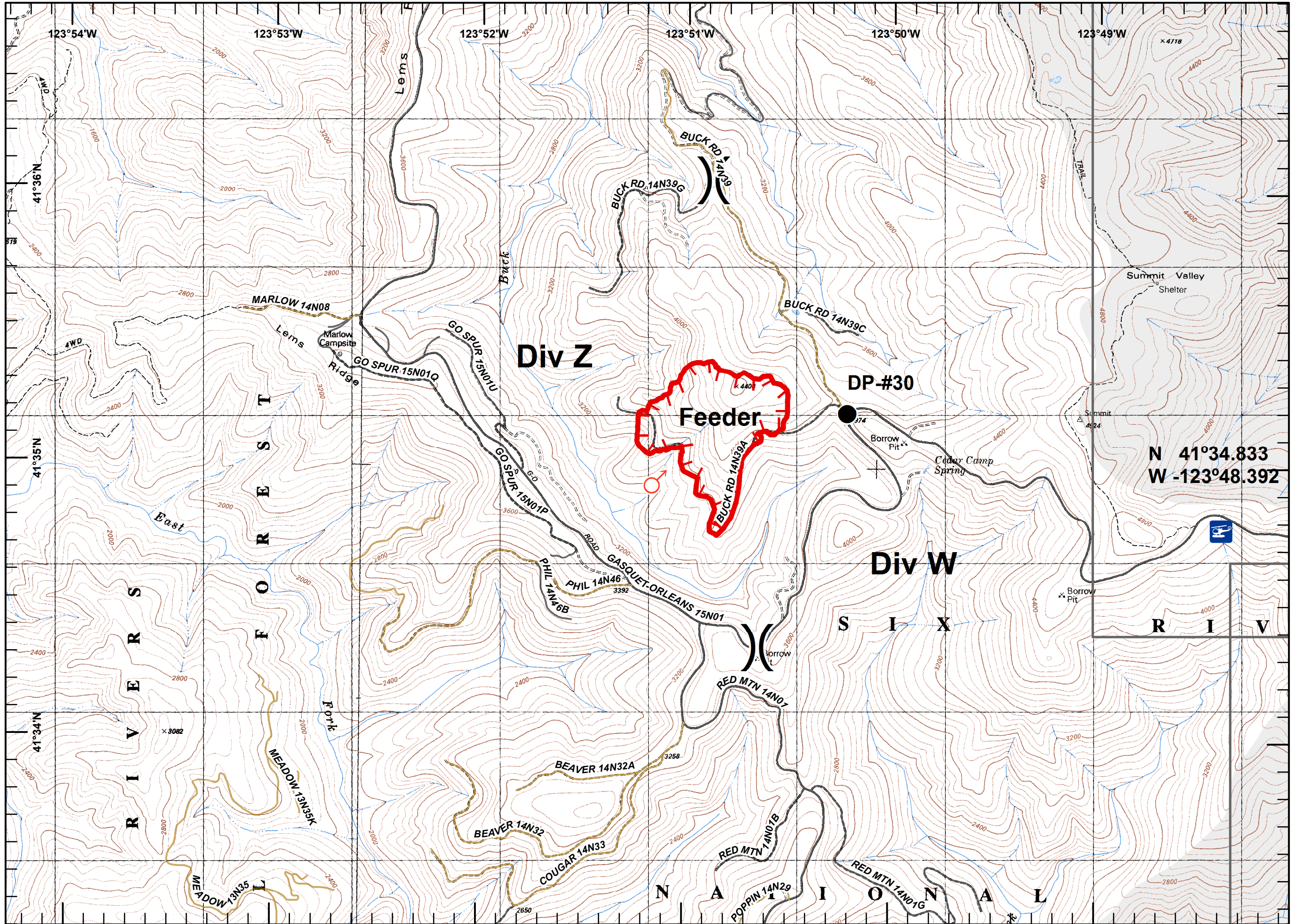
0 0.25 0.5 Miles

A.S.  
 August 08, 2015  
 0030

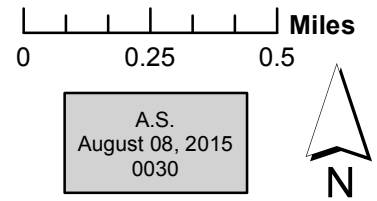
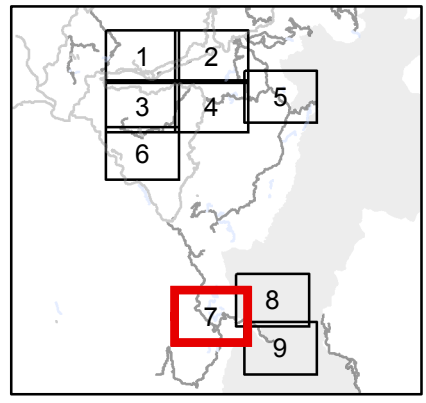


Legend

- Division
- Branch
- Drop Point
- Fire Origin
- Spot Fire
- Helispot
- Staging Area
- Water Source
- Helibase
- Incident Command Post
- Camp
- Incident Base
- Hot Spot
- Repeater
- Safety Zone
- Fire Location
- Fire Location Contained
- Unimproved Landing Zone
- Restricted Water Source
- Pump
- Gate
- Uncontrolled Fire Edge
- Completed Dozer Line
- Completed Hand Line
- Siskiyou Wilderness
- Completed Line
- Wilderness Boundary



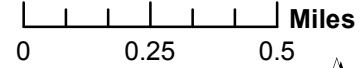
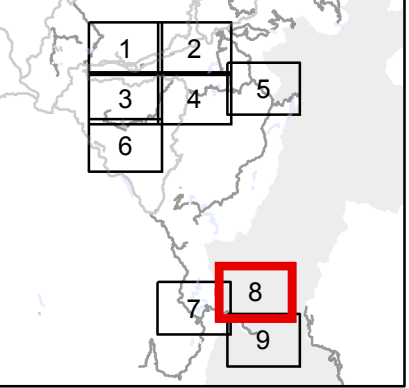
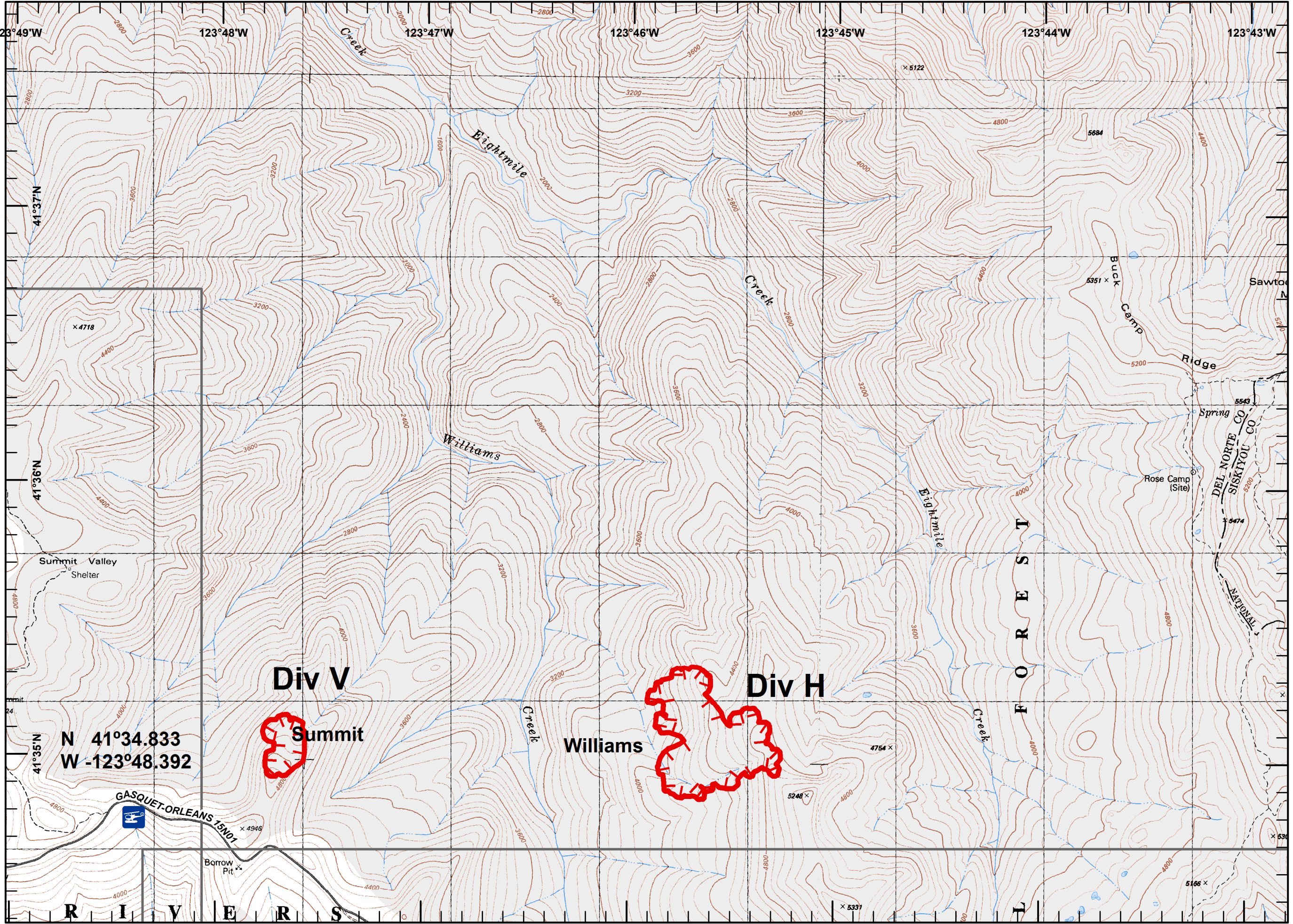
N 41°34.833  
 W -123°48.392





**Legend**

- Division
- Branch
- Drop Point
- Fire Origin
- Spot Fire
- Helispot
- Staging Area
- Water Source
- Helibase
- Incident Command Post
- Camp
- Incident Base
- Hot Spot
- Repeater
- Safety Zone
- Fire Location
- Fire Location Contained
- Unimproved Landing Zone
- Restricted Water Source
- Pump
- Gate
- Uncontrolled Fire Edge
- Completed Dozer Line
- Completed Hand Line
- Siskiyou Wilderness
- Completed Line
- Wilderness Boundary



A.S.  
 August 08, 2015  
 0030



**Gasquet Complex  
CA-SRF-001488**

08/08/2015

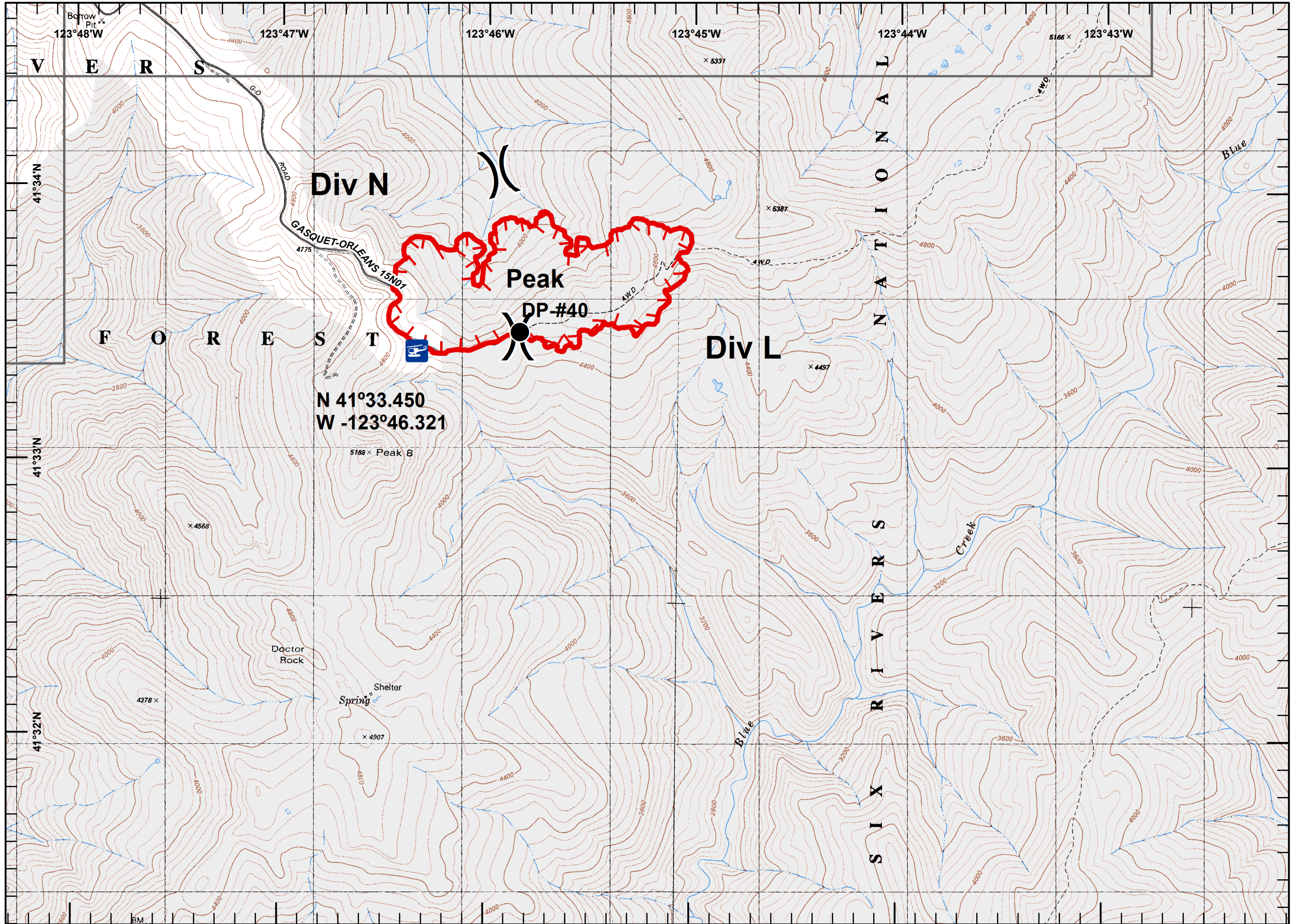
0600-0600

NAD 1983 UTM Zone 10N

Page 9

**Legend**

- Division
- Branch
- Drop Point
- Fire Origin
- Spot Fire
- Helispot
- Staging Area
- Water Source
- Helibase
- Incident Command Post
- Camp
- Incident Base
- Hot Spot
- Repeater
- Safety Zone
- Fire Location
- Fire Location Contained
- Unimproved Landing Zone
- Restricted Water Source
- Pump
- Gate
- Uncontrolled Fire Edge
- Completed Dozer Line
- Completed Hand Line
- Siskiyou Wilderness
- Completed Line
- Wilderness Boundary



**Div N**

**Peak**

**DP-#40**

**Div L**

**N 41°33.450  
W -123°46.321**

Doctor Rock

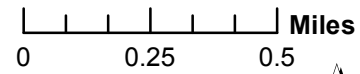
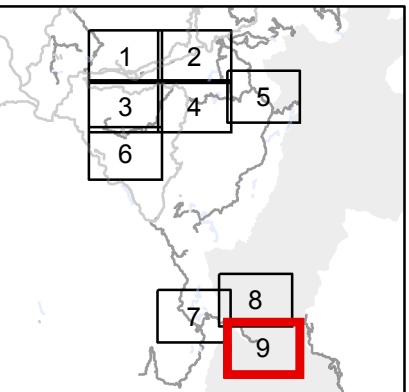
Shelter  
Spring

SIX RIVERS CREEK

V E R S

F O R E S T

N A T I O N A L



A.S.  
August 08, 2015  
0030

