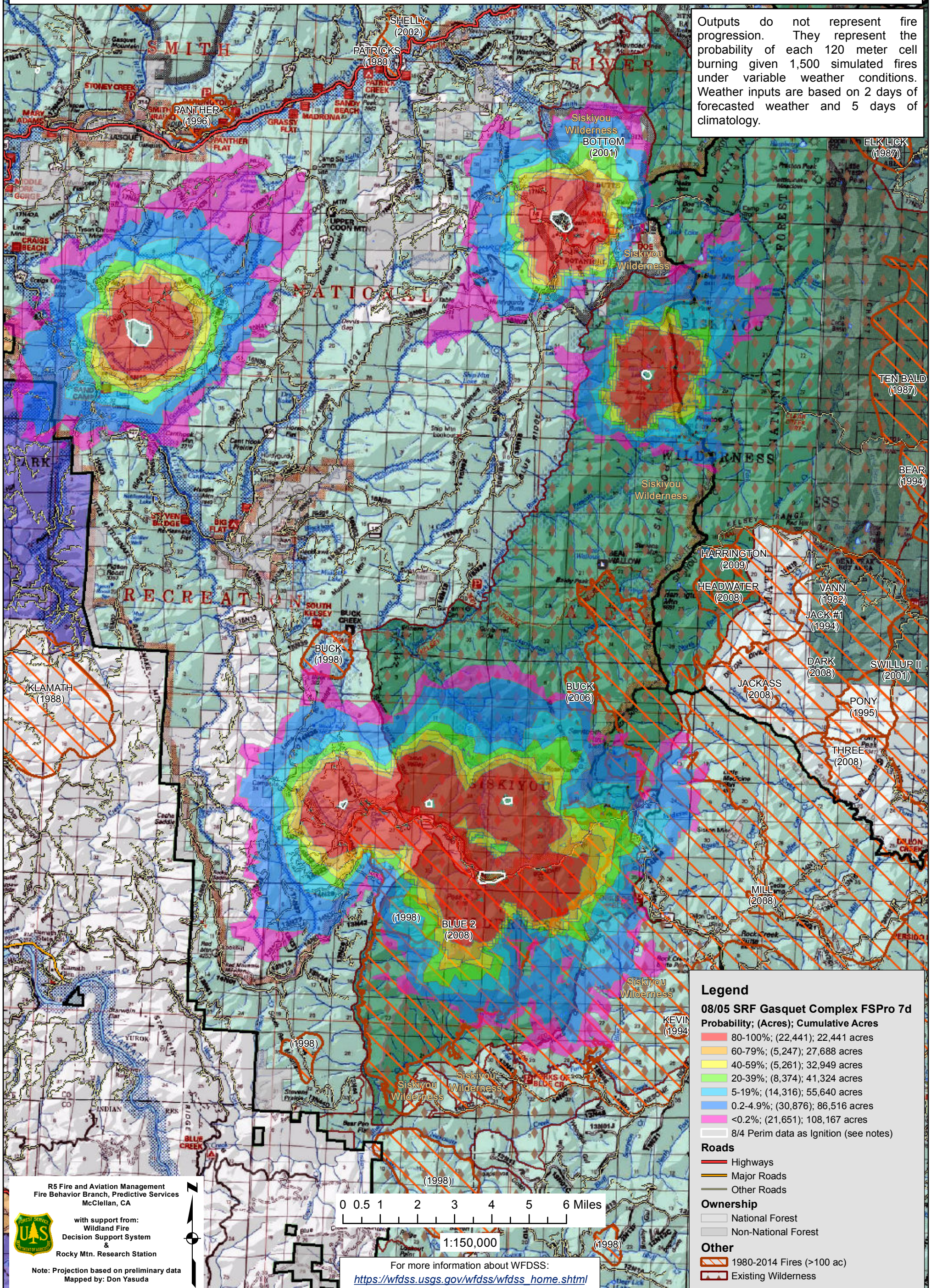


August 5, 2015

**WFDSS - FSPRO PROBABILITY: SRF Gasquet Complex (2015-CASRF-001486)**  
**08/05 - 7 DAYS - 120m Res; 1500 Fire Sim**  
**ERC: 40101 - CAMP SIX LOOKOUT (5.5 miles); WINDS: 40101 - CAMP SIX LOOKOUT (5.5 miles)**  
**File: 8.5 Initial 7 day FSPRO; Analyst: Larry Hood**

Notes: 8/5 initial 7 day FSPRO analysis for 7 fires in complex: Coon, Bear, Paw, Feeder, Summit, Williams, and Peak. 8/4 perimeter data used for ignition files and is likely not represent of current fire sizes (no IR data available). No barrier files used and model assumes no suppression. **Expect spread into low probability surfaces early in the analysis period due to extreme drought. Amount and duration of inversions/smoke cover and resulting fire spread is difficult to model.**

Outputs do not represent fire progression. They represent the probability of each 120 meter cell burning given 1,500 simulated fires under variable weather conditions. Weather inputs are based on 2 days of forecasted weather and 5 days of climatology.



**Legend**

**08/05 SRF Gasquet Complex FSPRO 7d**

**Probability; (Acres); Cumulative Acres**

- 80-100%; (22,441); 22,441 acres
- 60-79%; (5,247); 27,688 acres
- 40-59%; (5,261); 32,949 acres
- 20-39%; (8,374); 41,324 acres
- 5-19%; (14,316); 55,640 acres
- 0.2-4.9%; (30,876); 86,516 acres
- <0.2%; (21,651); 108,167 acres
- 8/4 Perim data as Ignition (see notes)

**Roads**

- Highways
- Major Roads
- Other Roads

**Ownership**

- National Forest
- Non-National Forest

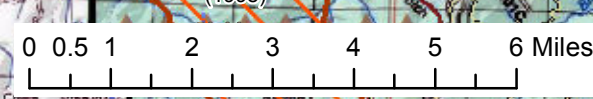
**Other**

- 1980-2014 Fires (>100 ac)
- Existing Wilderness

R5 Fire and Aviation Management  
 Fire Behavior Branch, Predictive Services  
 McClellan, CA

with support from:  
 Wildland Fire  
 Decision Support System &  
 Rocky Mtn. Research Station

Note: Projection based on preliminary data  
 Mapped by: Don Yasuda



1:150,000

For more information about WFDSS:  
[https://wfdss.usgs.gov/wfdss/wfdss\\_home.shtml](https://wfdss.usgs.gov/wfdss/wfdss_home.shtml)