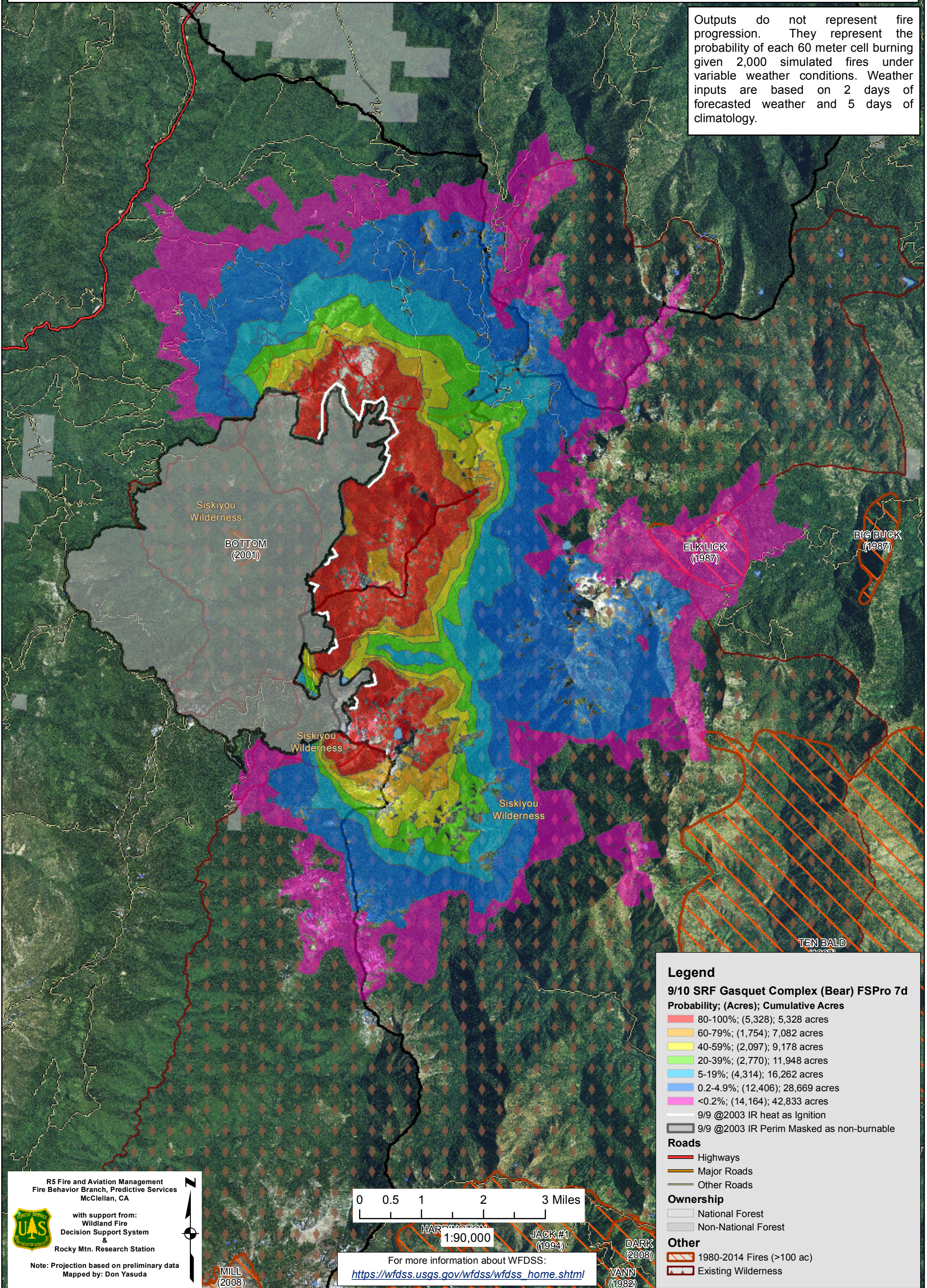


September 10, 2015

**WFDSS - FSPRO PROBABILITY: SRF Bear Fire, Gasquet Complex (2015-CASRF-001486)**  
**09/10 - 7 DAYS - 60m Res; 2000 Fire Sim**  
**ERC: 40101 - CAMP SIX LOOKOUT (5.5 miles); WINDS: 40105 - SHIP MTN L.O. (8.0 miles)**  
**File: 9.10 Bear Updated 7 day FSPro; Analyst: Larry Hood**

Notes: Updated 7 day FSPro analysis, 9/10 to 9/16 for the Bear fire on the Gasquet Complex. Masks 9/9 2003 IR perimeter as non-burnable. Ignition file based on 9/9 2003 IR heat. No barrier files used. **Expect spread into low probability surfaces early in the analysis period due to extreme drought conditions combined with current hot and dry weather. Model assumes no suppression action and does not account for any thunderstorm downdrafts which are in the forecast for Saturday.**

Outputs do not represent fire progression. They represent the probability of each 60 meter cell burning given 2,000 simulated fires under variable weather conditions. Weather inputs are based on 2 days of forecasted weather and 5 days of climatology.



**Legend**

**9/10 SRF Gasquet Complex (Bear) FSPro 7d**

**Probability; (Acres); Cumulative Acres**

- 80-100%; (5,328); 5,328 acres
- 60-79%; (1,754); 7,082 acres
- 40-59%; (2,097); 9,178 acres
- 20-39%; (2,770); 11,948 acres
- 5-19%; (4,314); 16,262 acres
- 0.2-4.9%; (12,406); 28,669 acres
- <0.2%; (14,164); 42,833 acres

- 9/9 @2003 IR heat as Ignition
- 9/9 @2003 IR Perim Masked as non-burnable

**Roads**

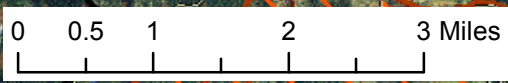
- Highways
- Major Roads
- Other Roads

**Ownership**

- National Forest
- Non-National Forest

**Other**

- 1980-2014 Fires (>100 ac)
- Existing Wilderness



1:90,000

For more information about WFDSS:  
[https://wfdss.usgs.gov/wfdss/wfdss\\_home.shtml](https://wfdss.usgs.gov/wfdss/wfdss_home.shtml)

R5 Fire and Aviation Management  
 Fire Behavior Branch, Predictive Services  
 McClellan, CA

with support from:  
 Wildland Fire  
 Decision Support System  
 &  
 Rocky Mtn. Research Station

Note: Projection based on preliminary data  
 Mapped by: Don Yasuda