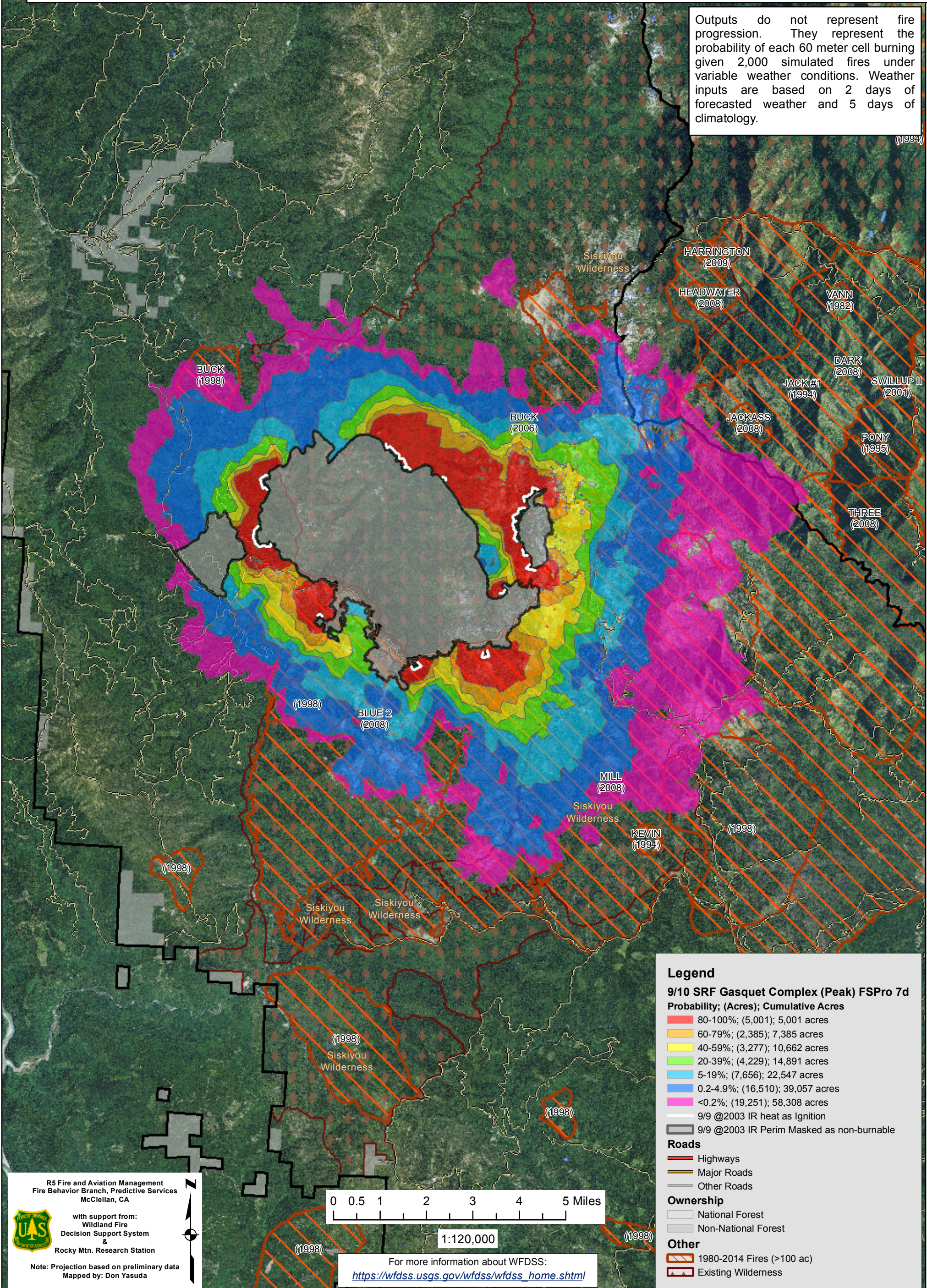


WFDSS - FSPRO PROBABILITY: SRF Peak Fire, Gasquet Complex (2015-CASRF-001486)
09/10 - 7 DAYS - 60m Res; 2000 Fire Sim
ERC: 40101 - CAMP SIX LOOKOUT (5.5 miles); WINDS: 40105 - SHIP MTN L.O. (8.0 miles)
File: 9.10 Peak Updated 7 day FSPro; Analyst: Larry Hood

Notes: Updated 7 day FSPro analysis, 9/10 to 9/16 for the Peak fire on the Gasquet Complex. Masks 9/9 2003 IR perimeter as non-burnable. Ignition file based on 9/9 2003 IR heat. No barrier files used. **Expect spread into low probability surfaces early in the analysis period due to extreme drought conditions combined with current hot and dry weather. Model assumes no suppression action and does not account for any thunderstorm downdrafts which are in the forecast for Saturday.**

Outputs do not represent fire progression. They represent the probability of each 60 meter cell burning given 2,000 simulated fires under variable weather conditions. Weather inputs are based on 2 days of forecasted weather and 5 days of climatology.



Legend

9/10 SRF Gasquet Complex (Peak) FSPro 7d

Probability; (Acres); Cumulative Acres

- 80-100%; (5,001); 5,001 acres
- 60-79%; (2,385); 7,385 acres
- 40-59%; (3,277); 10,662 acres
- 20-39%; (4,229); 14,891 acres
- 5-19%; (7,656); 22,547 acres
- 0.2-4.9%; (16,510); 39,057 acres
- <0.2%; (19,251); 58,308 acres

- 9/9 @2003 IR heat as Ignition
- 9/9 @2003 IR Perim Masked as non-burnable

Roads

- Highways
- Major Roads
- Other Roads

Ownership

- National Forest
- Non-National Forest

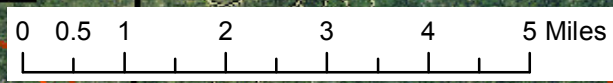
Other

- 1980-2014 Fires (>100 ac)
- Existing Wilderness

R5 Fire and Aviation Management
 Fire Behavior Branch, Predictive Services
 McClellan, CA

with support from:
 Wildland Fire
 Decision Support System
 &
 Rocky Mtn. Research Station

Note: Projection based on preliminary data
 Mapped by: Don Yasuda



1:120,000

For more information about WFDSS:
https://wfdss.usgs.gov/wfdss/wfdss_home.shtml