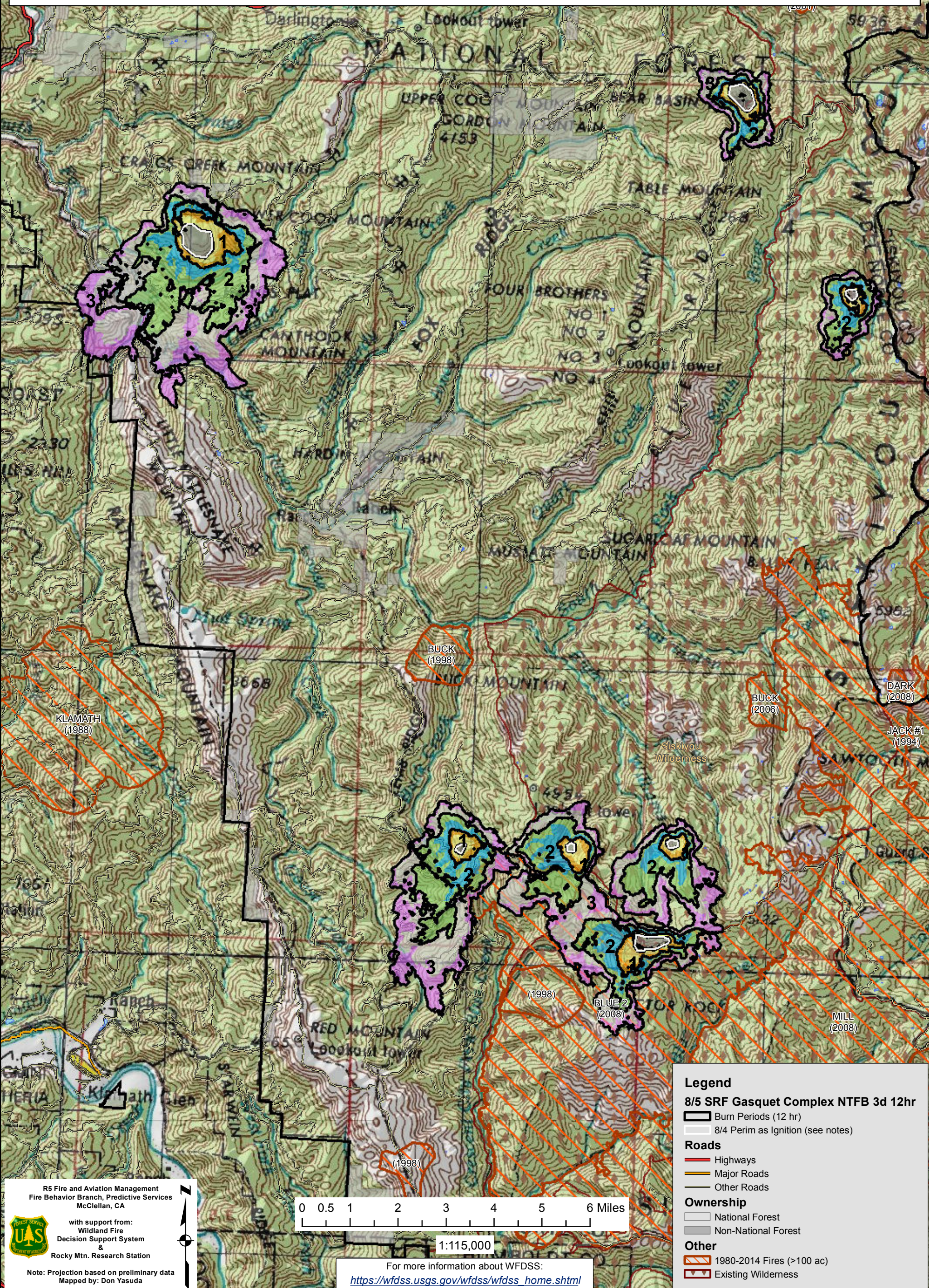


WFDSS - NEAR TERM FIRE BEHAVIOR ANALYSIS: SRF Gasquet Complex (2015-CASRF-001486)

08/05 - 3 DAYS - 12hr Burn Periods (0900-2100) - 30m Res
Fuel Moisture & Wx: 40101 - CAMP SIX LOOKOUT (5.5 miles)
File: 8.5 3 day Near Term Fire Behavior; Analyst: Larry Hood

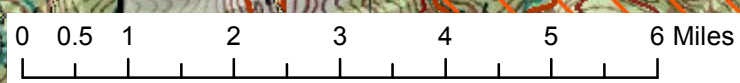
Note: 8/5 to 8/7 3 day Near Term fire behavior analysis for 7 fires in the complex: Coon, Bear, Paw, Feeder, Summit, Williams, and Peak. Uses 8/4 perimeters for ignition files and may not be representative of current fire sizes. 12 hour burn periods, 0900-2100. No barrier files used and model assumes no suppression action. **May under represent spread due to extreme drought conditions. Amount and duration of inversions/smoke cover and resulting fire behavior is challenging to model.** Colors showing 6 hour time steps.



R5 Fire and Aviation Management
Fire Behavior Branch, Predictive Services
McClellan, CA

with support from:
Wildland Fire
Decision Support System
&
Rocky Mtn. Research Station

Note: Projection based on preliminary data
Mapped by: Don Yasuda



1:115,000

For more information about WFDSS:
https://wfdss.usgs.gov/wfdss/wfdss_home.shtml

Legend

8/5 SRF Gasquet Complex NTFB 3d 12hr

- Burn Periods (12 hr)
- 8/4 Perim as Ignition (see notes)

Roads

- Highways
- Major Roads
- Other Roads

Ownership

- National Forest
- Non-National Forest

Other

- 1980-2014 Fires (>100 ac)
- Existing Wilderness