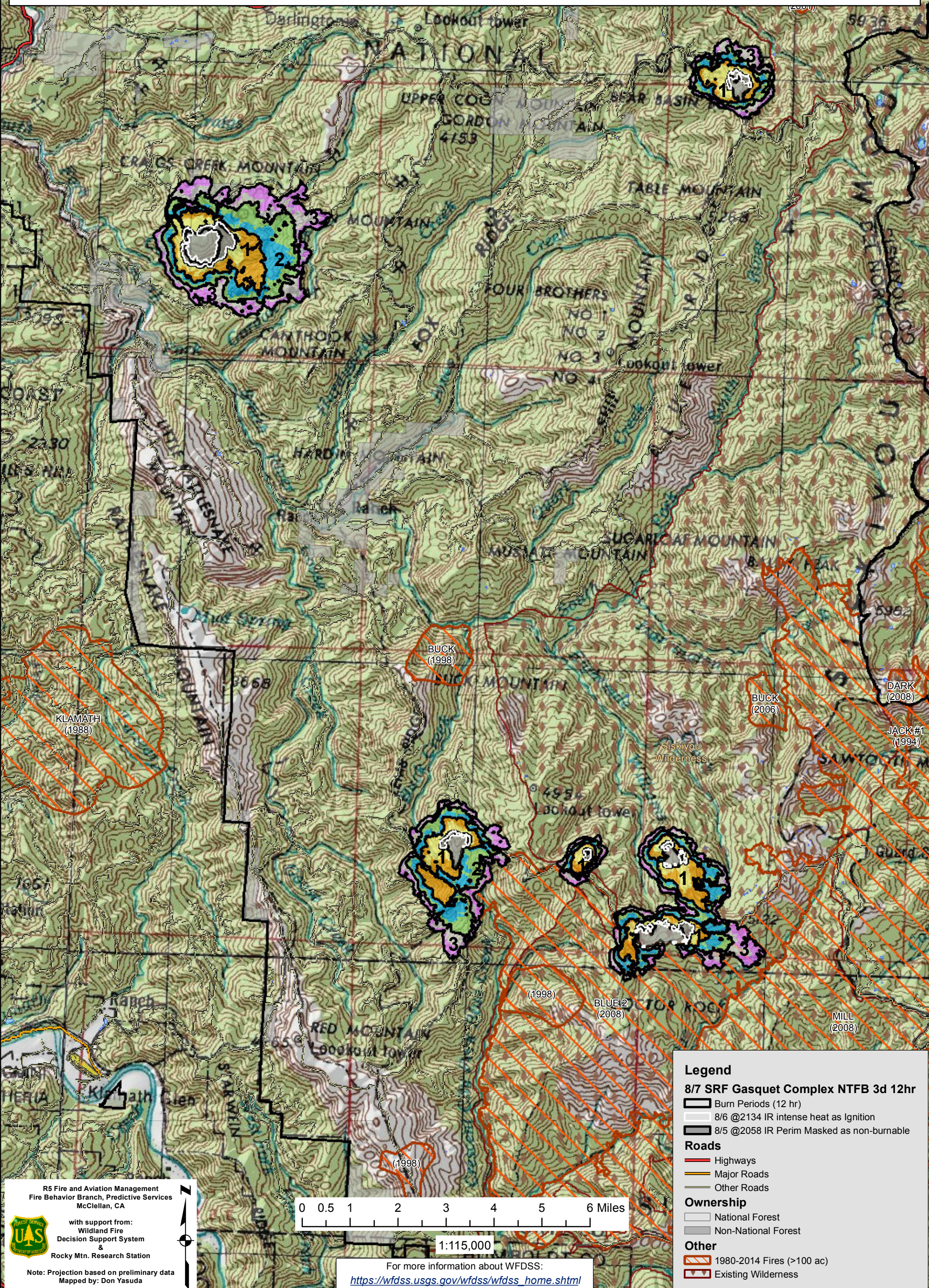


WFDSS - NEAR TERM FIRE BEHAVIOR ANALYSIS: SRF Gasquet Complex (2015-CASRF-001486)
08/07 - 3 DAYS - 12hr Burn Periods (0900-2100) - 30m Res
Fuel Moisture & Wx: 40101 - CAMP SIX LOOKOUT (5.5 miles)
File: 8.7 3 day Near Term Fire Behavior; Analyst: Larry Hood

Note: 8/7 to 8/9 3 day Near Term fire behavior analysis for 6 fires in the complex: Coon, Bear, Feeder, Summit, Williams, and Peak. Masks 8/5 2058 IR perimeters as non-burnable and uses 8/6 2134 IR intense heat for ignition file to model spread in areas showing recent growth. No barrier files used and model assumes no suppression action. **May under represent spread due to extreme drought conditions. Strength and duration of inversions/smoke cover remains a critical factor in predicting spread but is challenging to model. Colors showing 6 hour time steps.**



Legend

8/7 SRF Gasquet Complex NTFB 3d 12hr

- Burn Periods (12 hr)
- 8/6 @2134 IR intense heat as Ignition
- 8/5 @2058 IR Perim Masked as non-burnable

Roads

- Highways
- Major Roads
- Other Roads

Ownership

- National Forest
- Non-National Forest

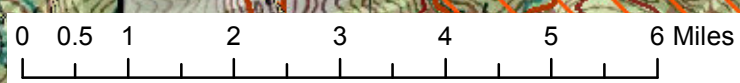
Other

- 1980-2014 Fires (>100 ac)
- Existing Wilderness

R5 Fire and Aviation Management
Fire Behavior Branch, Predictive Services
McClellan, CA

with support from:
Wildland Fire
Decision Support System
&
Rocky Mtn. Research Station

Note: Projection based on preliminary data
Mapped by: Don Yasuda



1:115,000

For more information about WFDSS:
https://wfdss.usgs.gov/wfdss/wfdss_home.shtml