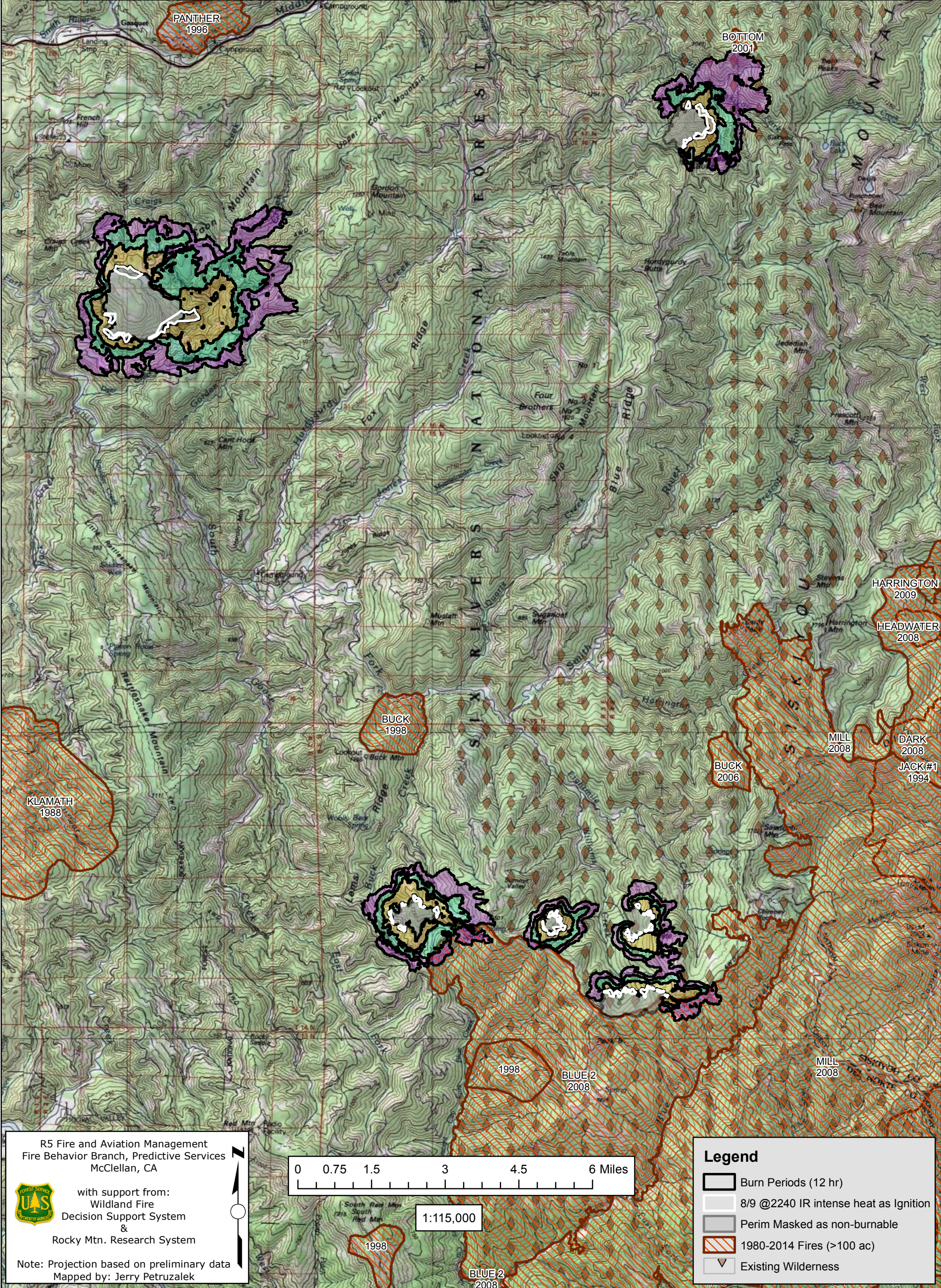


August 10, 2015

WFFDS - NEAR TERM FIRE BEHAVIOR ANALYSIS: SRF Gasquet Complex (2015-CASRF-001486)

08/10 - 3 DAYS - 12hr Burn Periods (0900-2100) - 30m Res
Fuel Moisture & Wx: 40101 - CAMP SIX LOOKOUT (5.5 miles)
File 8.10 day Near Term Fire Behavior; Analyst: Larry Hood

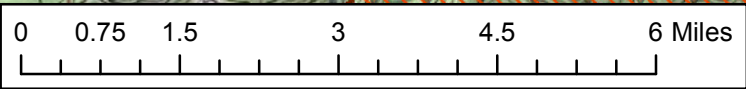
Note: Updated 3 day Near Term fire behavior analysis, 8/10 to 8/12. Masks 8/8 2239 IR perimeters as non-burnable and uses 8/9 2240 IR intense heat for ignition file to model spread in areas showing recent growth. No barrier files used and model assumes no suppression action. May under represent spread due to extreme drought conditions and/or forecasted increase in S/SW winds.



R5 Fire and Aviation Management
Fire Behavior Branch, Predictive Services
McClellan, CA

with support from:
Wildland Fire
Decision Support System
&
Rocky Mtn. Research System

Note: Projection based on preliminary data
Mapped by: Jerry Petruzalek



1:115,000

Legend

- Burn Periods (12 hr)
- 8/9 @2240 IR intense heat as Ignition
- Perim Masked as non-burnable
- 1980-2014 Fires (>100 ac)
- Existing Wilderness