
















IAP MAP

PONY INCIDENT
CA-KNF-004500
JUNE 12, 2016
NIGHT SHIFT

1655 ACRES
AS OF 00:58
06/12/16

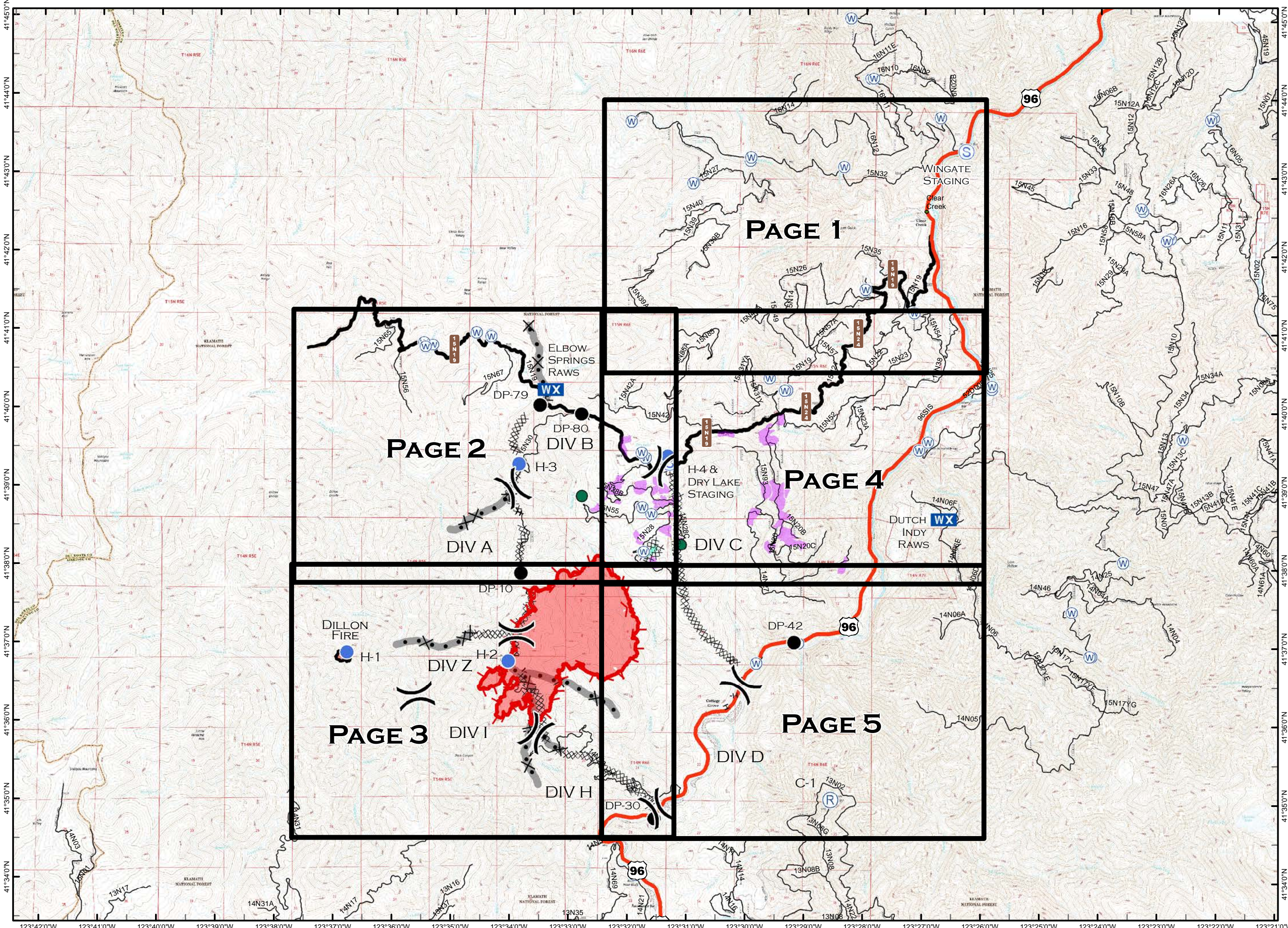
-  DIVISION BREAK
-  DROP POINT
-  HELISPOT
-  MOBILE WEATHER UNIT
-  REPEATER
-  STAGING AREA
-  WATER SOURCE
-  UNCONTROLLED FIRE EDGE
-  COMPLETED DOZER LINE
-  COMPLETED LINE
-  HAND LINE
-  SPOTTED OWL SITE
-  PROGENY SITE
-  CRAWFORD PROJECT UNIT
-  HISTORICAL FIRELINE



0 0.5 1

MILES

NAD 83



PAGE 1

PAGE 2

PAGE 4

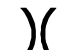



PAGE 3

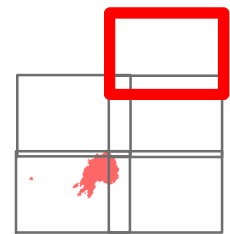
PAGE 5

IAP MAP

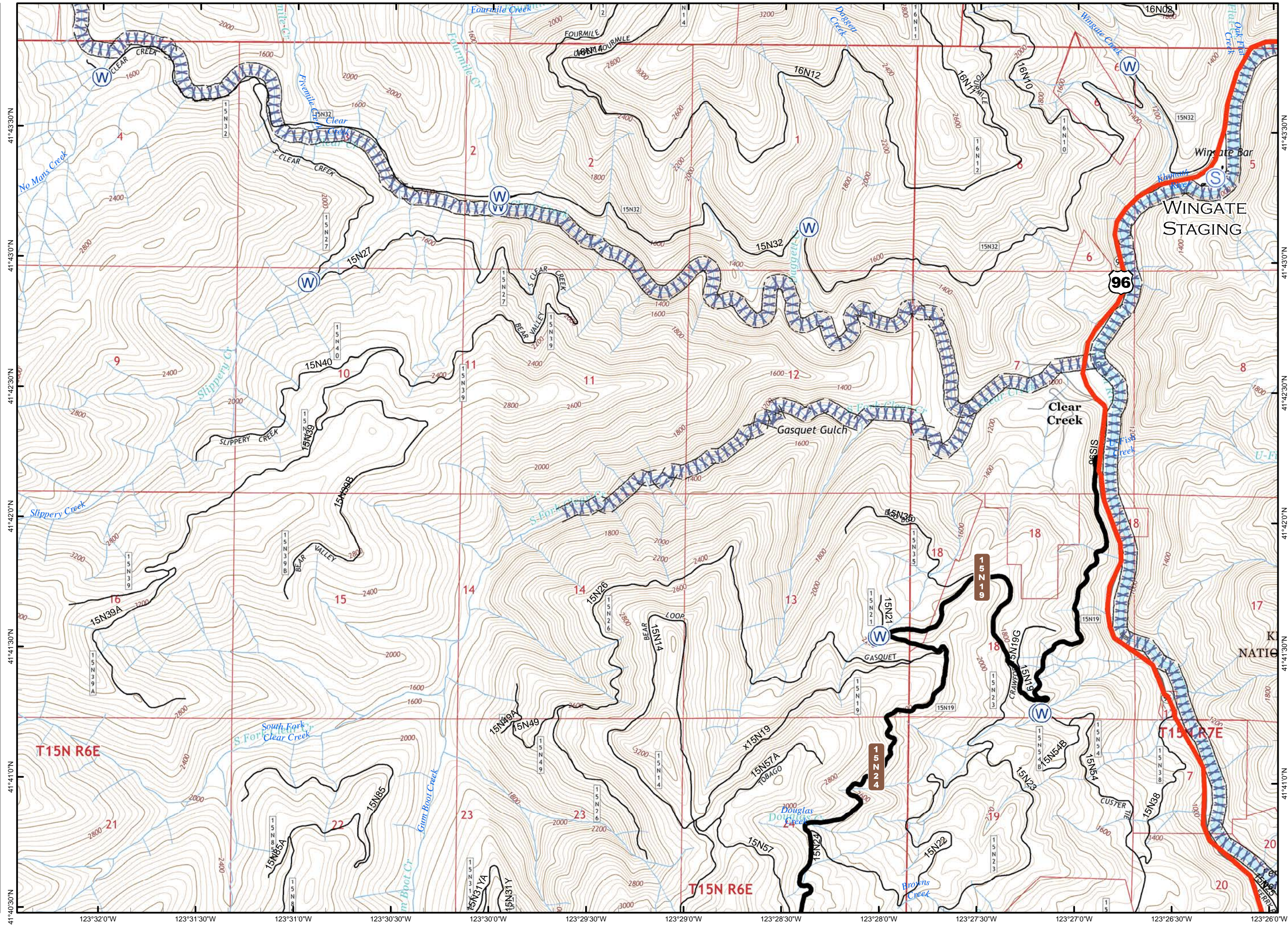
PONY INCIDENT
CA-KNF-004500
JUNE 12, 2016
NIGHT SHIFT

PAGE 1 OF 5

-  DIVISION BREAK
-  STAGING AREA
-  WATER SOURCE
-  SCREEN ONLY DRAFTING



0 0.5
MILES
NAD 83

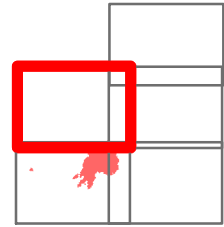


IAP MAP

PONY INCIDENT
CA-KNF-004500
JUNE 12, 2016
NIGHT SHIFT

PAGE 2 OF 5

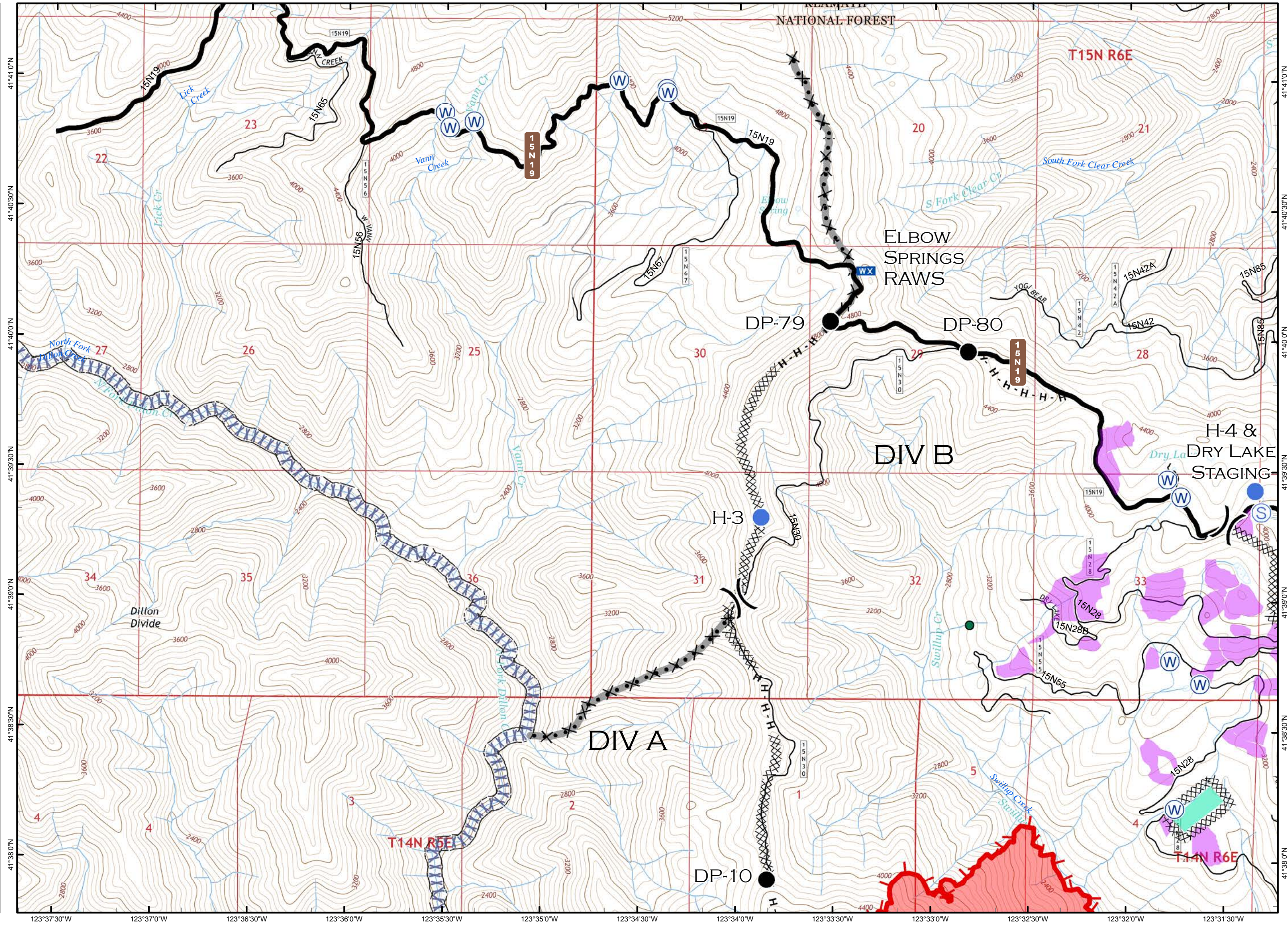
- () DIVISION BREAK
- DROP POINT
- HELISPOT
- WX MOBILE WEATHER UNIT
- S STAGING AREA
- W WATER SOURCE
- UNCONTROLLED FIRE EDGE
- XXXX COMPLETED DOZER LINE
- H-H HAND LINE
- SPOTTED OWL SITE
- PROGENY SITE
- CRAWFORD PROJECT UNIT
- XXXX SCREEN ONLY DRAFTING
- HISTORICAL FIRELINE



0 0.5

MILES

NAD 83

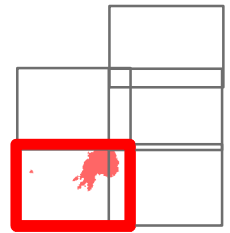


IAP MAP

PONY INCIDENT
CA-KNF-004500
JUNE 12, 2016
NIGHT SHIFT

PAGE 3 OF 5

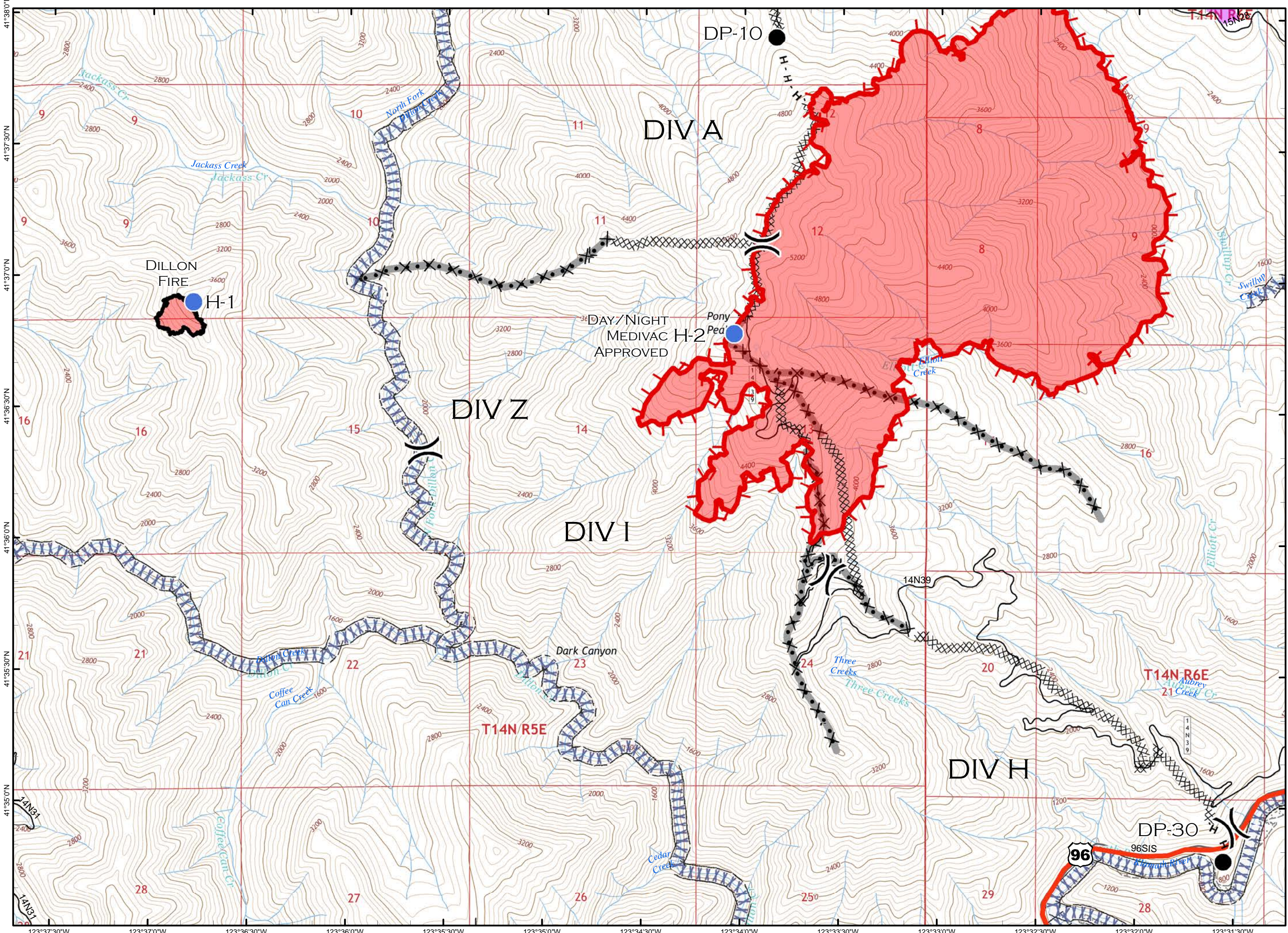
- DIVISION BREAK
- DROP POINT
- HELISPOT
- UNCONTROLLED FIRE EDGE
- COMPLETED DOZER LINE
- COMPLETED LINE
- HAND LINE
- CRAWFORD PROJECT UNIT
- SCREEN ONLY DRAFTING
- HISTORICAL FIRELINE



0 0.5

MILES

NAD 83

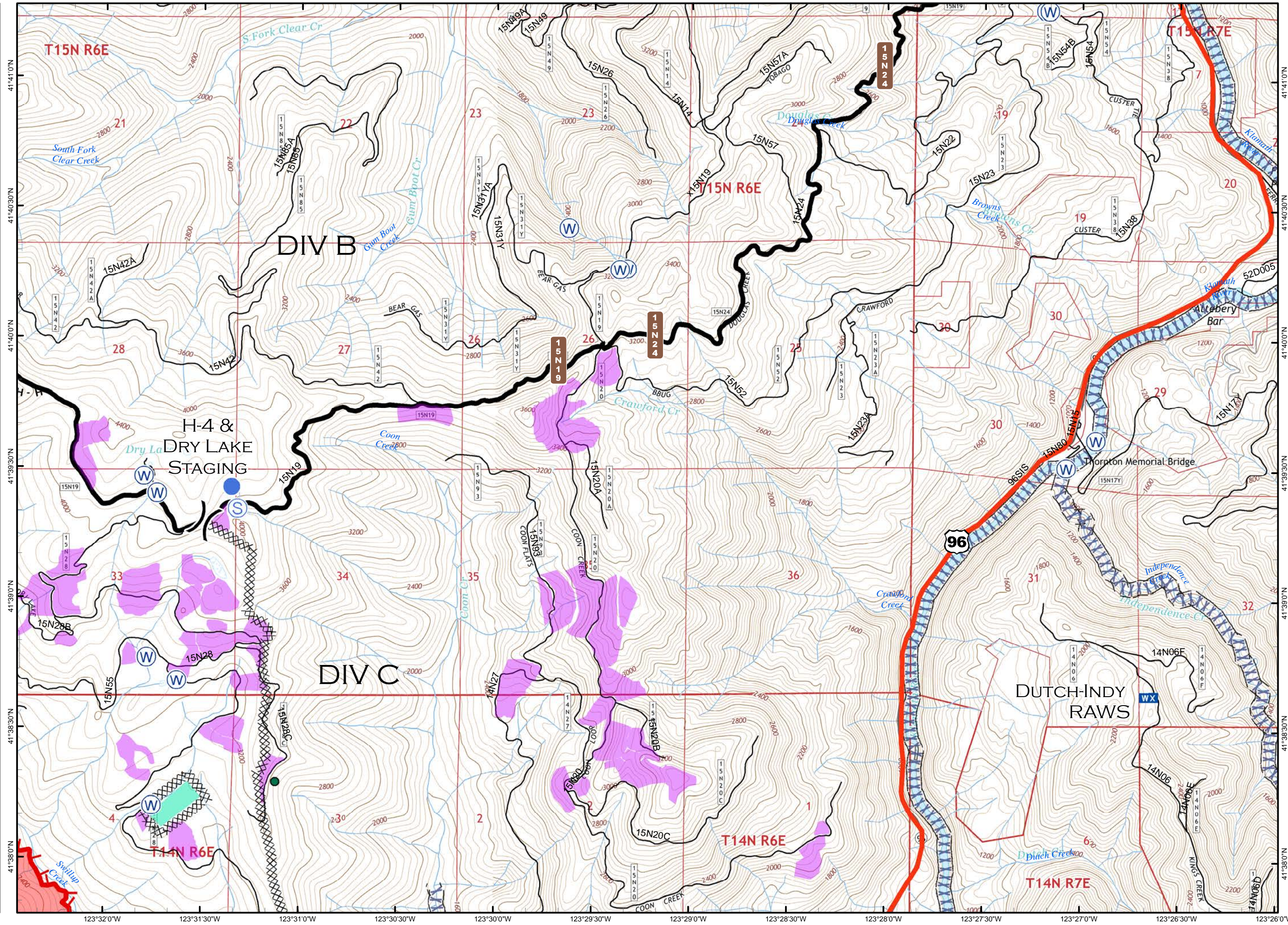
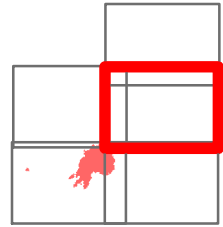


IAP MAP

PONY INCIDENT
CA-KNF-004500
JUNE 12, 2016
NIGHT SHIFT

PAGE 4 OF 5











- DIVISION BREAK
- HELISPOT
- MOBILE WEATHER UNIT
- STAGING AREA
- WATER SOURCE
- UNCONTROLLED FIRE EDGE
- COMPLETED DOZER LINE
- HAND LINE
- SPOTTED OWL SITE
- PROGENY SITE
- CRAWFORD PROJECT UNIT
- SCREEN ONLY DRAFTING

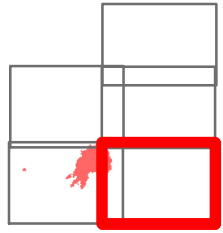


IAP MAP

PONY INCIDENT
CA-KNF-004500
JUNE 12, 2016
NIGHT SHIFT

PAGE 5 OF 5

-  DIVISION BREAK
-  DROP POINT
-  REPEATER
-  WATER SOURCE
-  UNCONTROLLED FIRE EDGE
-  COMPLETED DOZER LINE
-  HAND LINE
-  CRAWFORD PROJECT UNIT
-  SCREEN ONLY DRAFTING
-  HISTORICAL FIRELINE



0 0.5

MILES

NAD 83

