

IAP MAP

PONY INCIDENT
CA-KNF-004500
JUNE 13, 2016
DAY SHIFT

2096 ACRES
AS OF 21:23
06/13/16

- DROP POINT
- HELISPOT
- WX MOBILE WEATHER UNIT
- Ⓡ REPEATER
- SPOT FIRE
- Ⓢ STAGING AREA
- Ⓜ WATER SOURCE
- UNCONTROLLED FIRE EDGE
- COMPLETED DOZER LINE
- COMPLETED LINE
- H · H · HAND LINE
- PROPOSED DOZER LINE
-) (DIVISION BREAK
- SPOTTED OWL SITE
- PROGENY SITE
- CRAWFORD PROJECT UNIT
- HISTORICAL FIRELINE
- WILDERNESS AREA

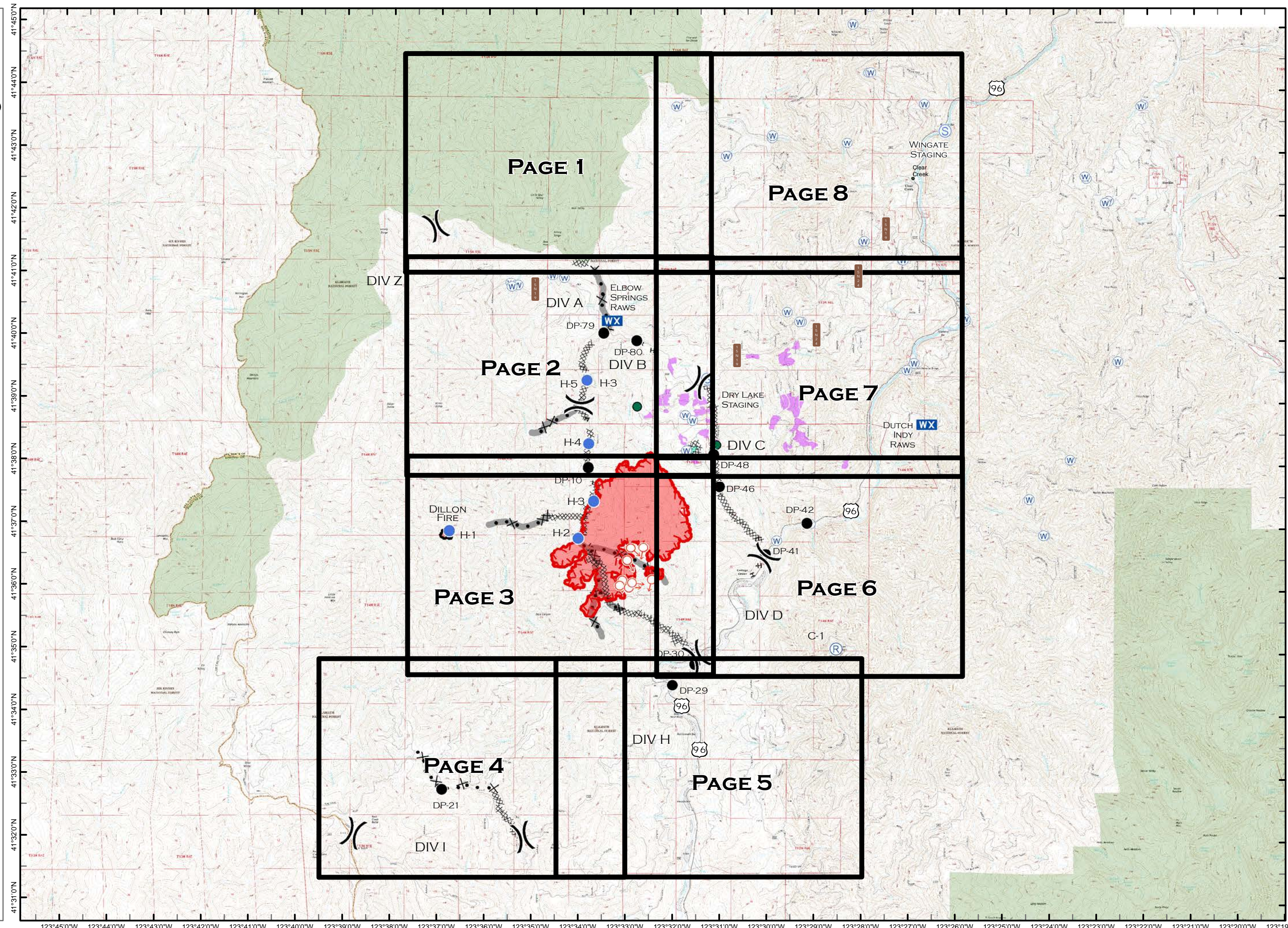


0 0.5 1



MILES

NAD 83

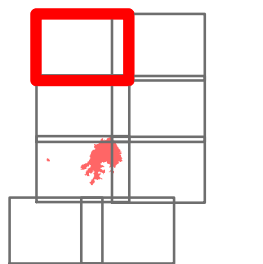


IAP MAP

PONY INCIDENT
CA-KNF-004500
JUNE 13, 2016
DAY SHIFT

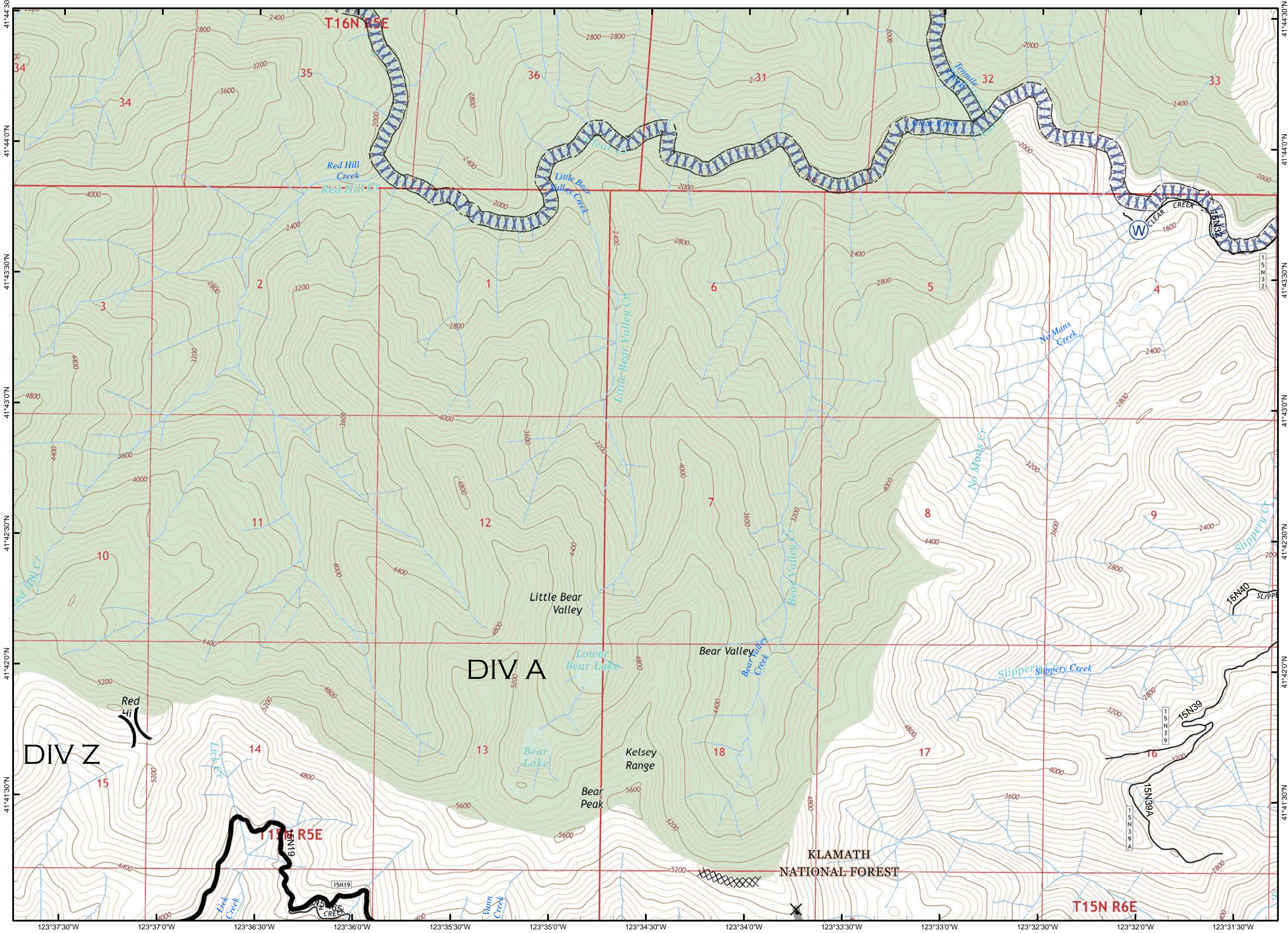
PAGE 1 OF 8

-  DIVISION BREAK
-  WATER SOURCE
-  COMPLETED DOZER LINE
-  SCREEN ONLY DRAFTING
-  HISTORICAL FIRELINE
-  WILDERNESS AREA



0 0.5

MILES
NAD 83

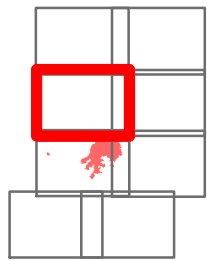


IAP MAP

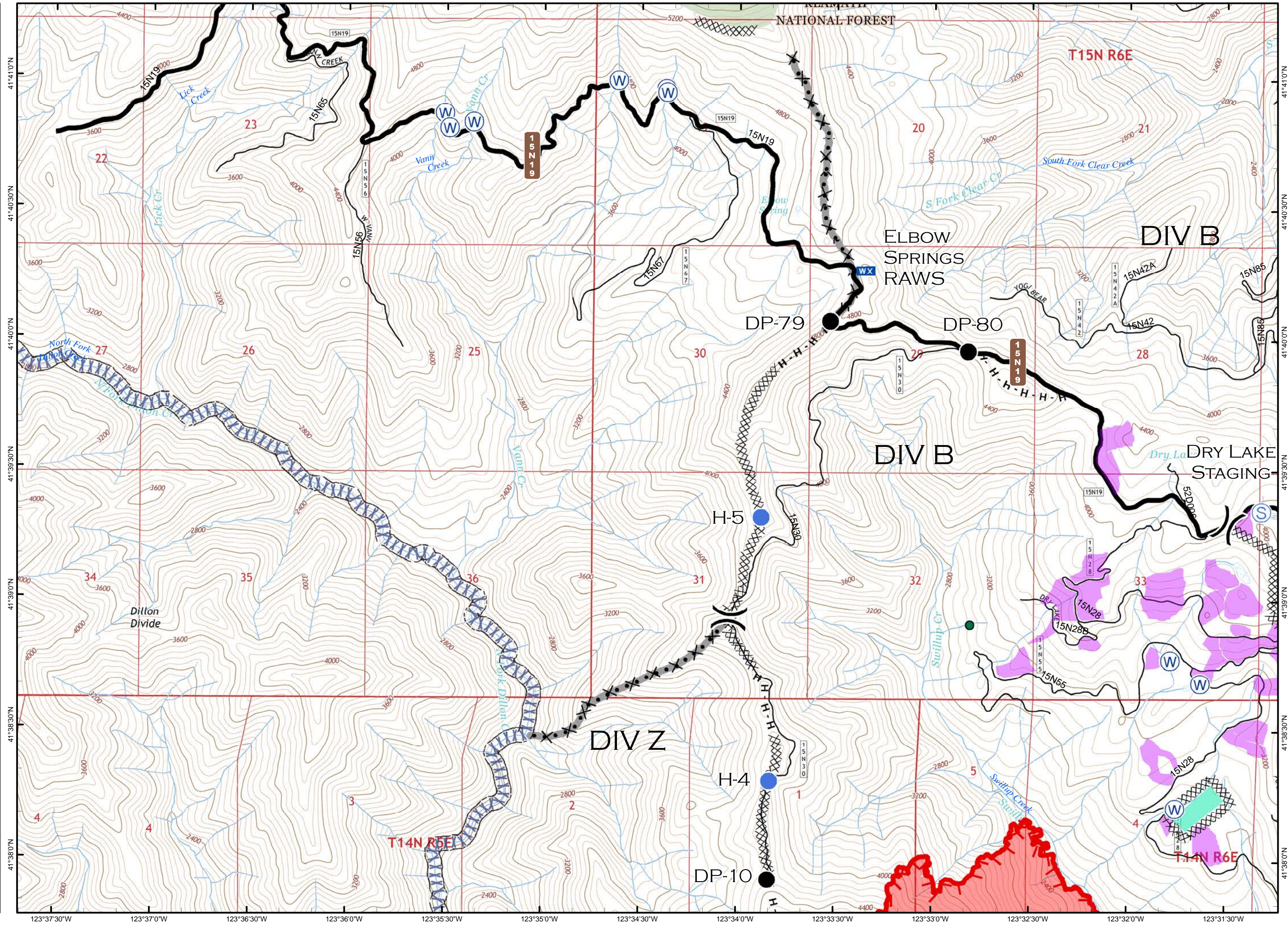
PONY INCIDENT
CA-KNF-004500
JUNE 13, 2016
DAY SHIFT

PAGE 2 OF 8

- () DIVISION BREAK
- DROP POINT
- HELISPOT
- WX MOBILE WEATHER UNIT
- S STAGING AREA
- W WATER SOURCE
- UNCONTROLLED FIRE EDGE
- XXXX COMPLETED DOZER LINE
- H-H HAND LINE
- SPOTTED OWL SITE
- PROGENY SITE
- CRAWFORD PROJECT UNIT
- XXXX SCREEN ONLY DRAFTING
- HISTORICAL FIRELINE
- WILDERNESS AREA



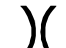





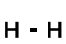





0 0.5
MILES
NAD 83

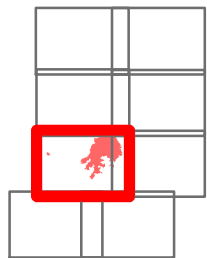


IAP MAP

PONY INCIDENT
CA-KNF-004500
JUNE 13, 2016
DAY SHIFT

PAGE 3 OF 8

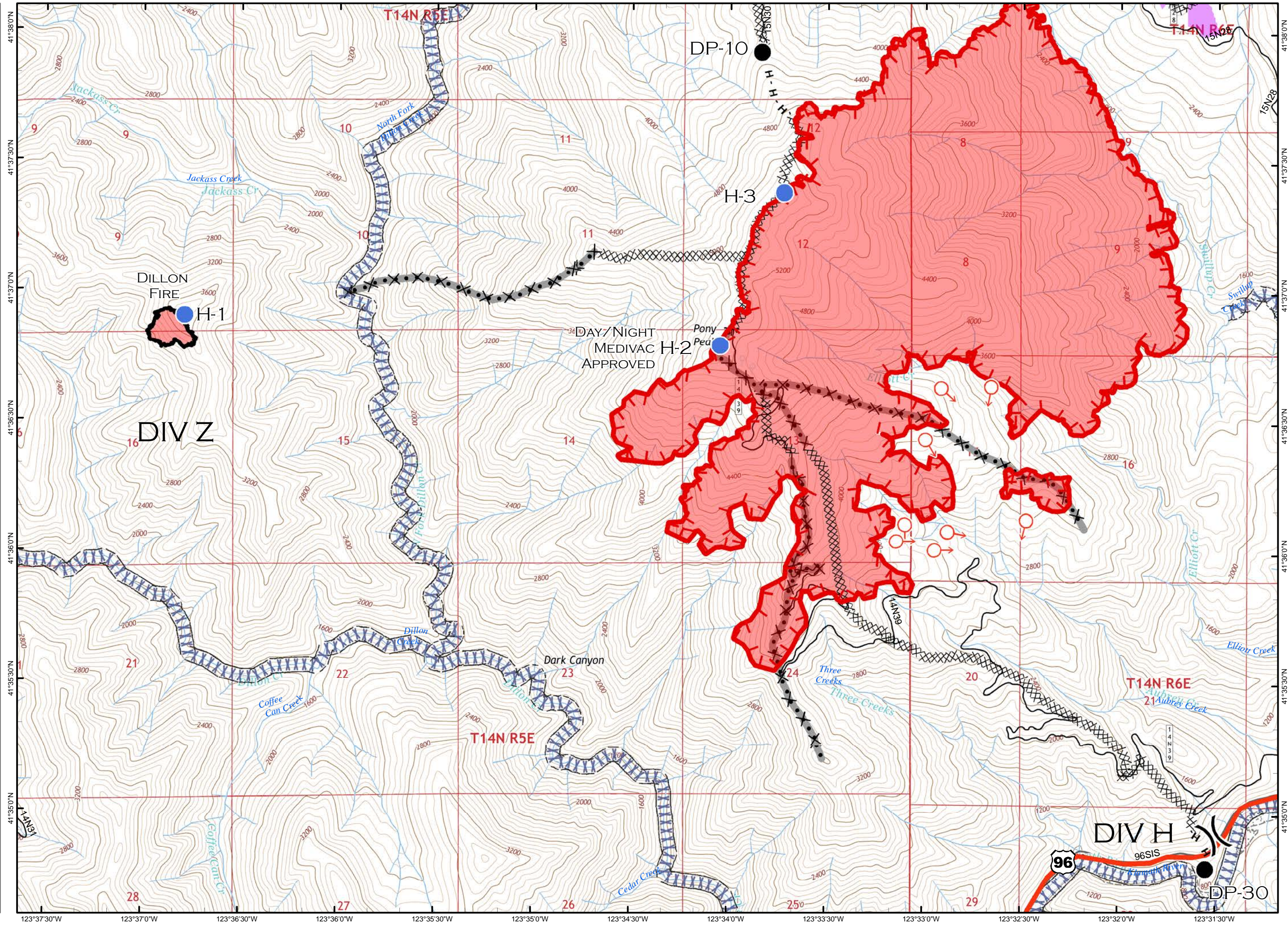
-  DIVISION BREAK
-  DROP POINT
-  HELISPOT
-  SPOT FIRE
-  UNCONTROLLED FIRE EDGE
-  COMPLETED DOZER LINE
-  COMPLETED LINE
-  HAND LINE
-  PROGENY SITE
-  CRAWFORD PROJECT UNIT
-  SCREEN ONLY DRAFTING
-  HISTORICAL FIRELINE



0 0.5

MILES

NAD 83

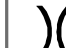






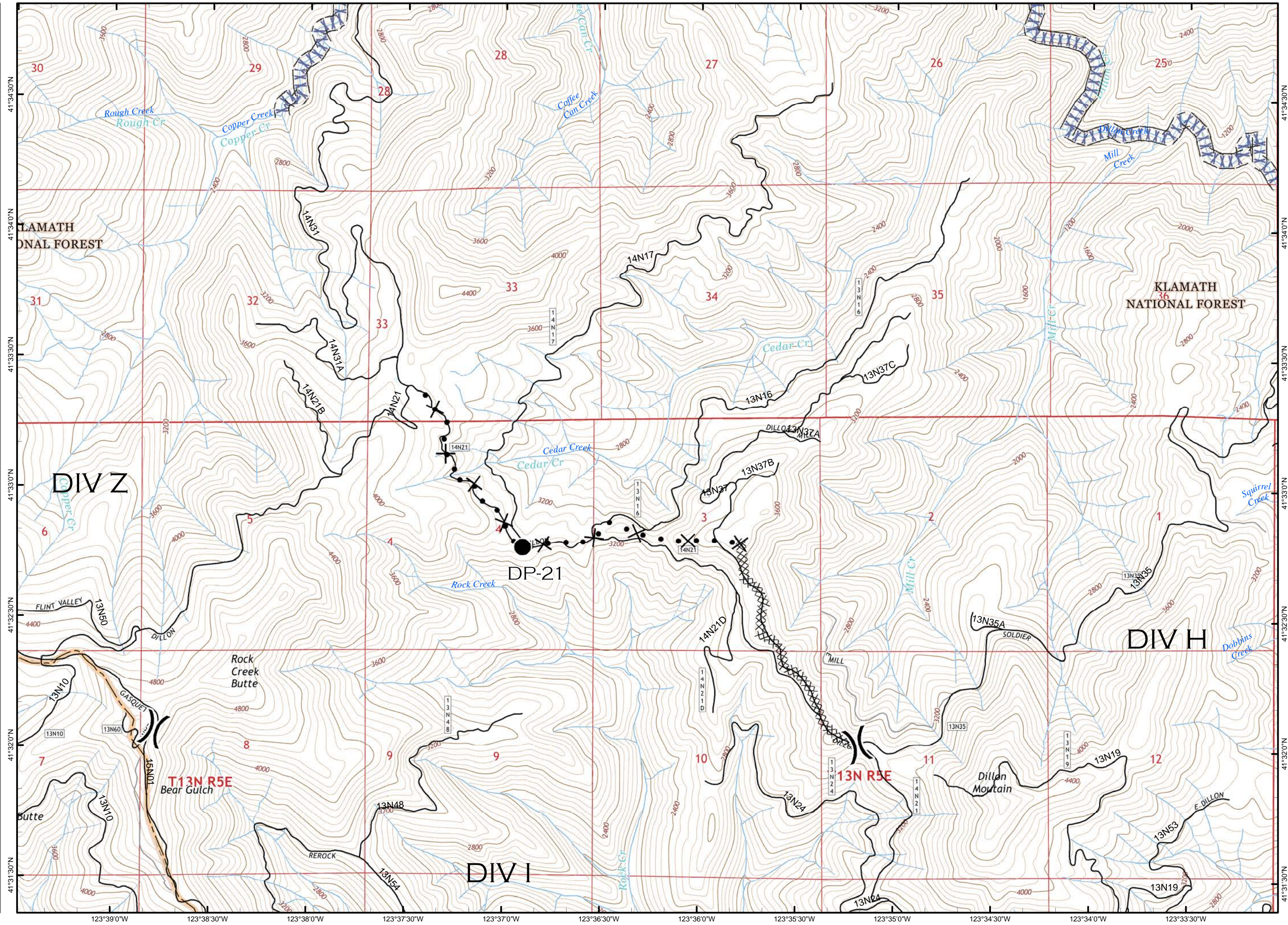
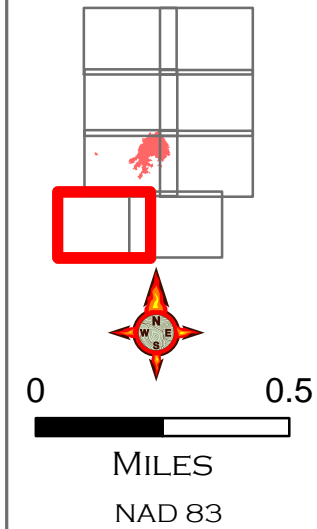
123°37'30"W 123°37'0"W 123°36'30"W 123°36'0"W 123°35'30"W 123°35'0"W 123°34'30"W 123°34'0"W 123°33'30"W 123°33'0"W 123°32'30"W 123°32'0"W 123°31'30"W

IAP MAP

PONY INCIDENT
CA-KNF-004500
JUNE 13, 2016
DAY SHIFT

PAGE 4 OF 8

-  DIVISION BREAK
-  DROP POINT
-  COMPLETED DOZER LINE
-  PROPOSED DOZER LINE
-  SCREEN ONLY DRAFTING

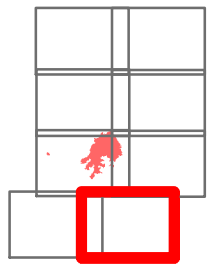


IAP MAP

PONY INCIDENT
CA-KNF-004500
JUNE 13, 2016
DAY SHIFT

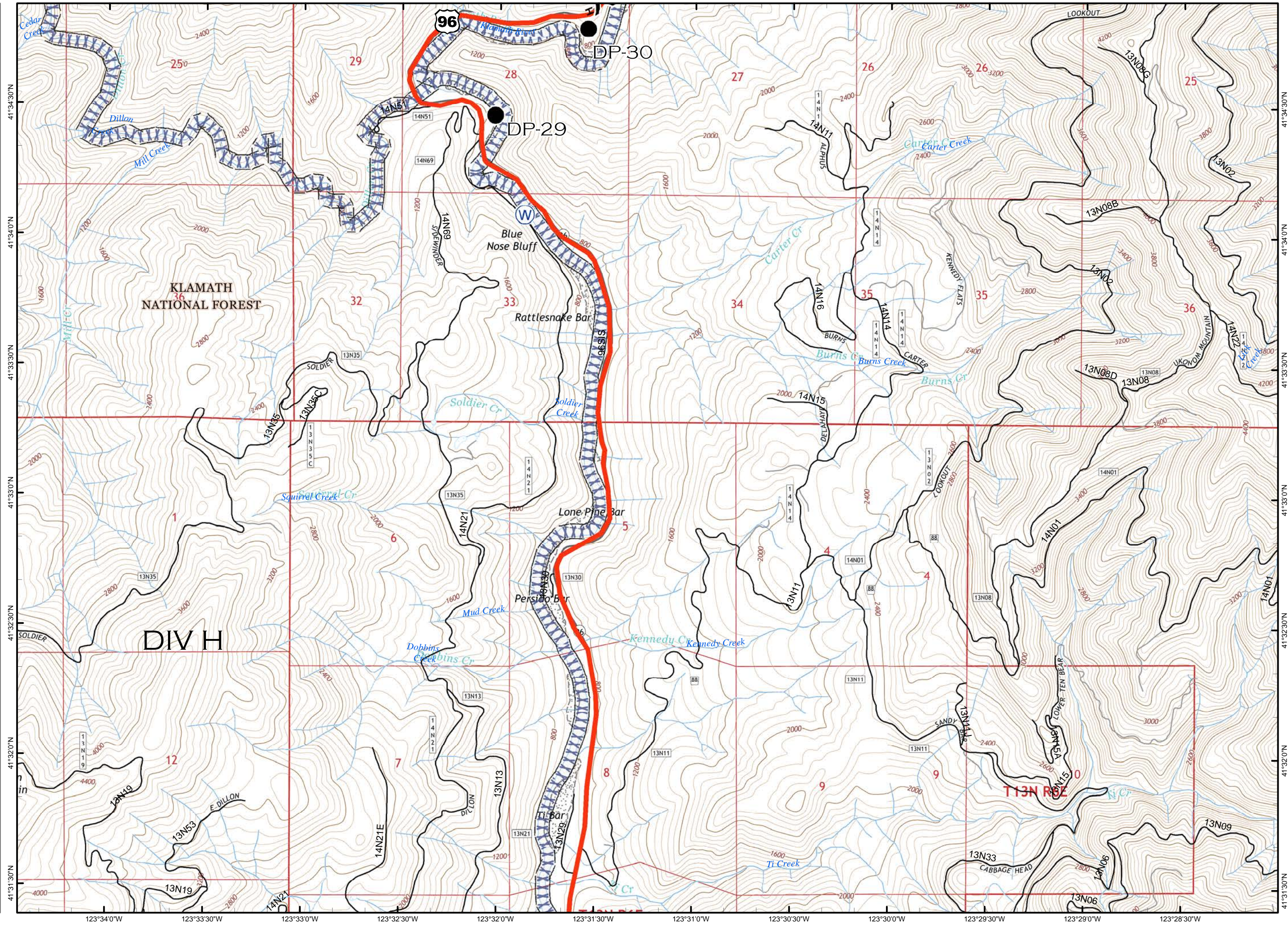
PAGE 5 OF 8

-  DIVISION BREAK
-  DROP POINT
-  WATER SOURCE
-  HAND LINE
-  SCREEN ONLY DRAFTING



0 0.5









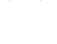

MILES
NAD 83

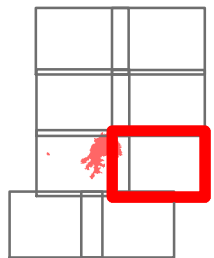


IAP MAP

PONY INCIDENT
CA-KNF-004500
JUNE 13, 2016
DAY SHIFT

PAGE 6 OF 8

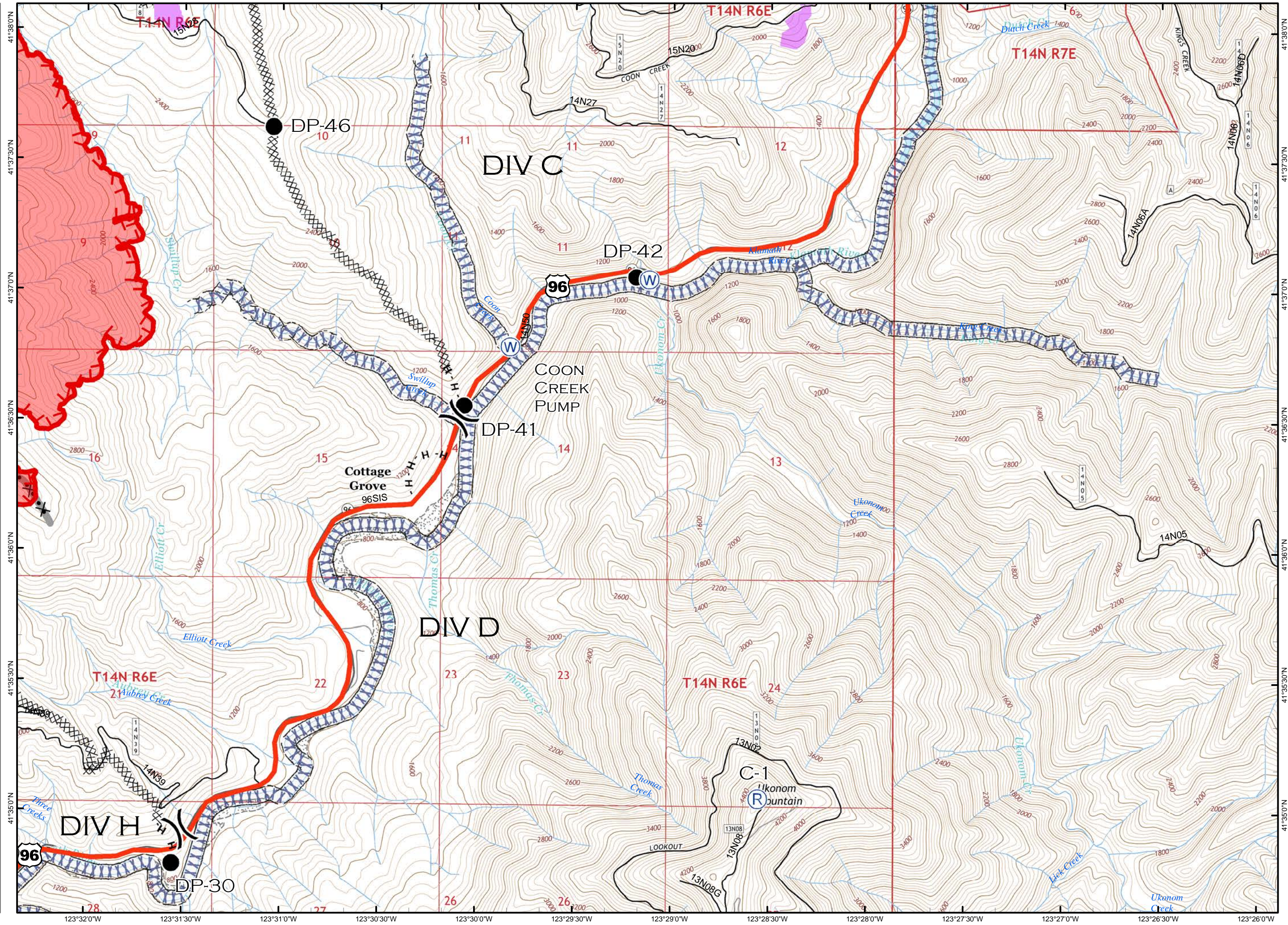
-  DIVISION BREAK
-  DROP POINT
-  REPEATER
-  WATER SOURCE
-  UNCONTROLLED FIRE EDGE
-  COMPLETED DOZER LINE
-  HAND LINE
-  CRAWFORD PROJECT UNIT
-  SCREEN ONLY DRAFTING
-  HISTORICAL FIRELINE



0 0.5

MILES

NAD 83

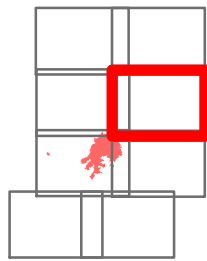


IAP MAP

PONY INCIDENT
CA-KNF-004500
JUNE 13, 2016
DAY SHIFT

PAGE 7 OF 8

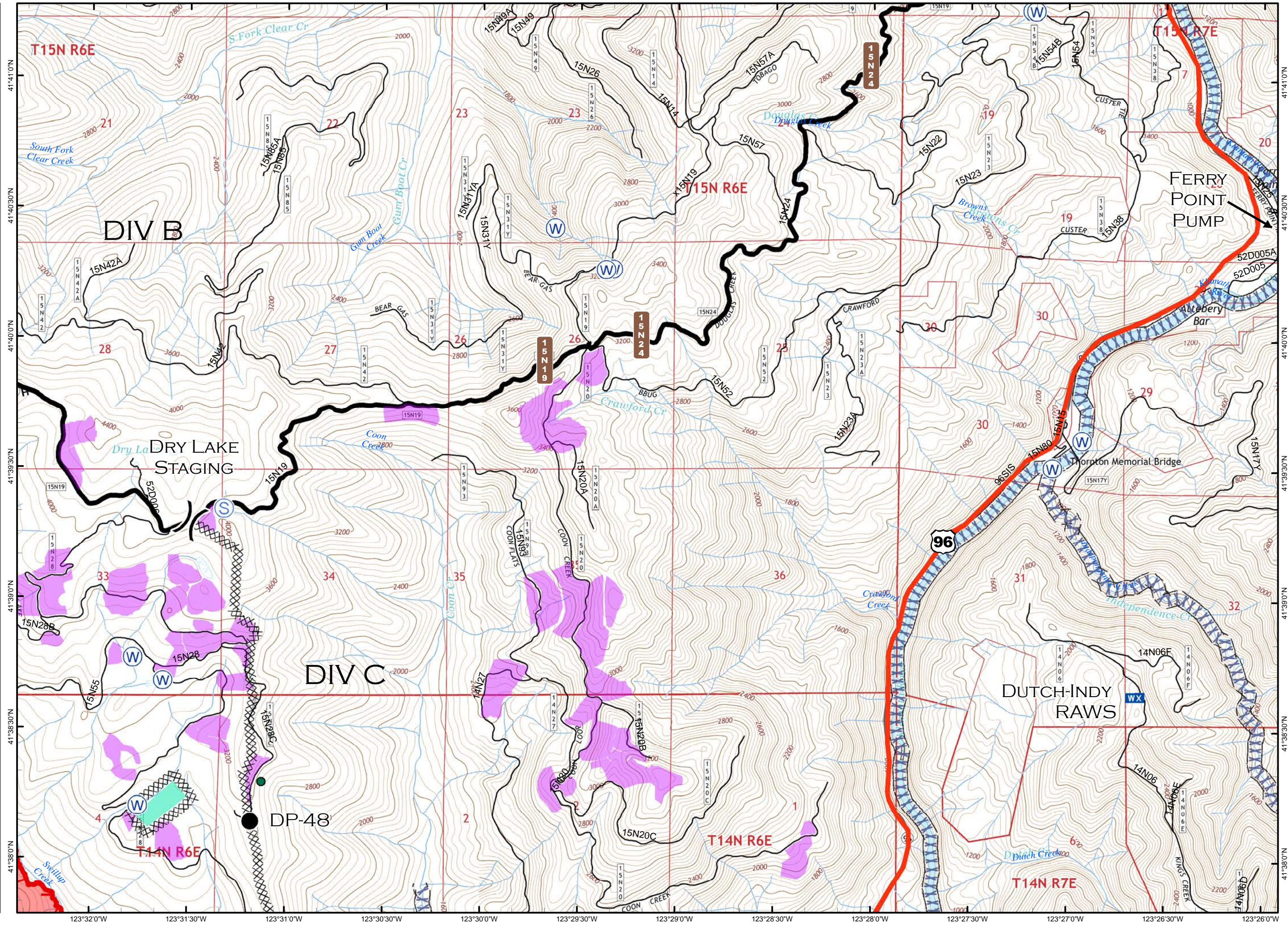
- DIVISION BREAK
- DROP POINT
- MOBILE WEATHER UNIT
- STAGING AREA
- WATER SOURCE
- UNCONTROLLED FIRE EDGE
- COMPLETED DOZER LINE
- HAND LINE
- SPOTTED OWL SITE
- PROGENY SITE
- CRAWFORD PROJECT UNIT
- SCREEN ONLY DRAFTING



0 0.5

MILES

NAD 83

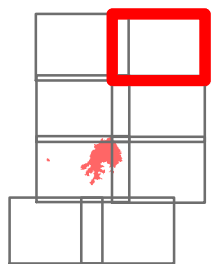


IAP MAP

PONY INCIDENT
CA-KNF-004500
JUNE 13, 2016
DAY SHIFT

PAGE 8 OF 8

- () DIVISION BREAK
- (S) STAGING AREA
- (W) WATER SOURCE
- (XXXX) SCREEN ONLY DRAFTING
- (Green Area) WILDERNESS AREA



0 0.5

MILES
NAD 83

