

# IAP MAP

PONY INCIDENT  
CA-KNF-004500  
JUNE 13, 2016  
NIGHT SHIFT

2096 ACRES  
AS OF 21:23  
06/13/16

- DROP POINT
- HELISPOT
- WX MOBILE WEATHER UNIT
- Ⓡ REPEATER
- SPOT FIRE
- Ⓢ STAGING AREA
- Ⓜ WATER SOURCE
- UNCONTROLLED FIRE EDGE
- COMPLETED DOZER LINE
- COMPLETED LINE
- H · H · HAND LINE
- PROPOSED DOZER LINE
- DIVISION BREAK
- SPOTTED OWL SITE
- PROGENY SITE
- CRAWFORD PROJECT UNIT
- HISTORICAL FIRELINE
- WILDERNESS AREA

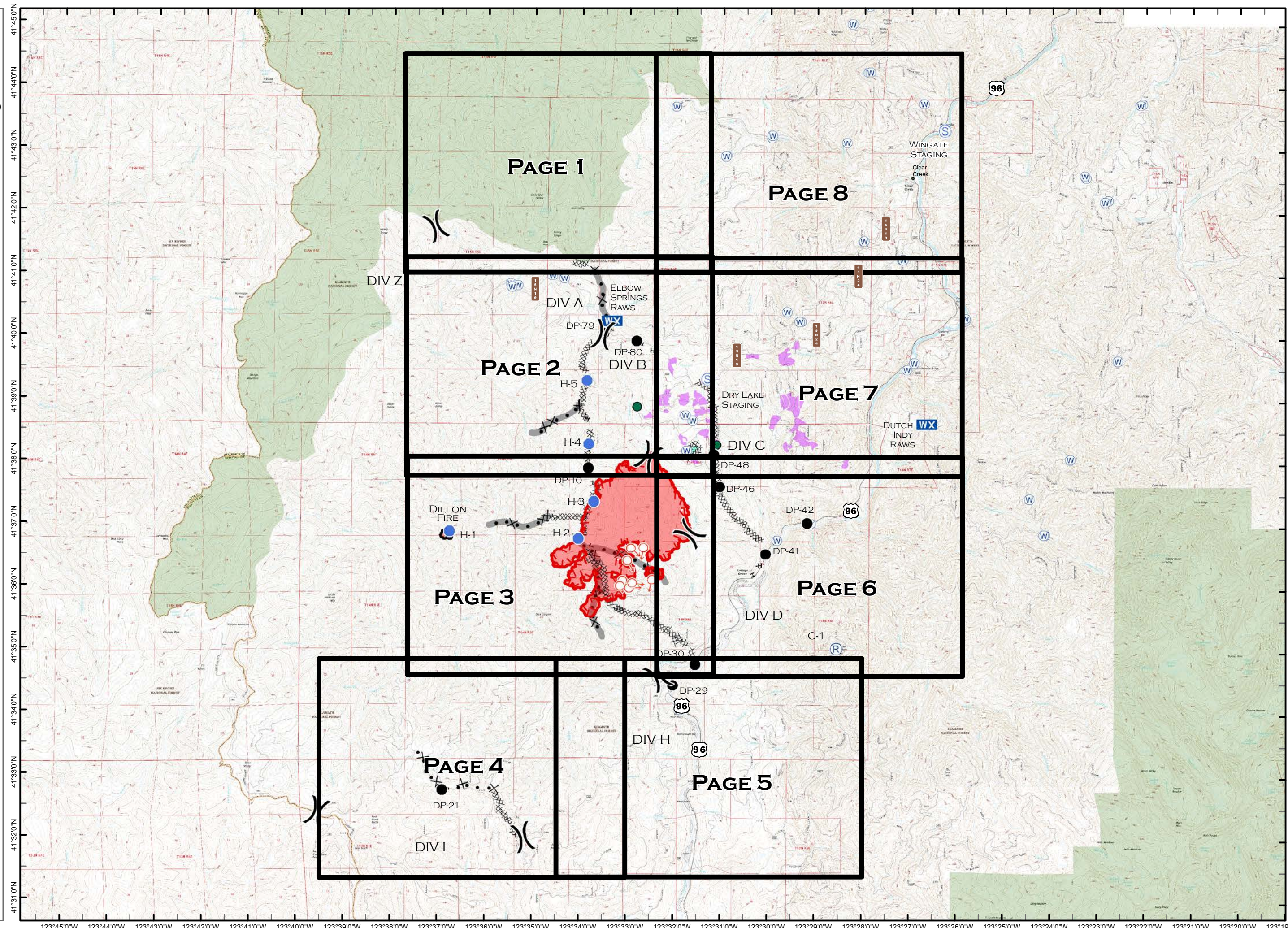


0 0.5 1



MILES

NAD 83



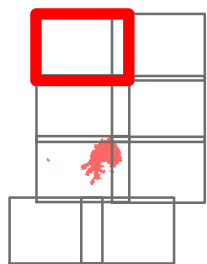


# IAP MAP

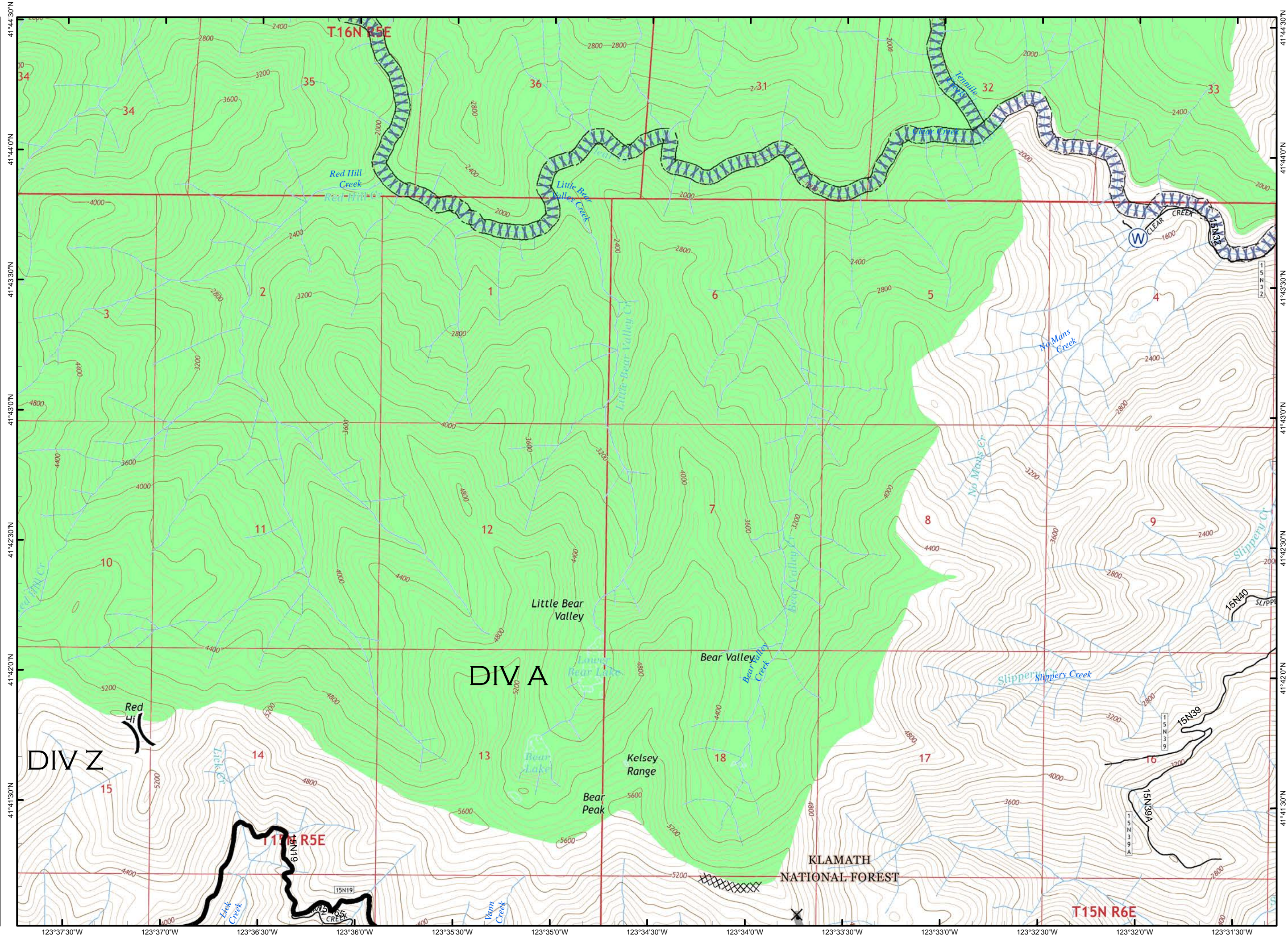
PONY INCIDENT  
CA-KNF-004500  
JUNE 13, 2016  
NIGHT SHIFT

PAGE 1 OF 8

-  DIVISION BREAK
-  WATER SOURCE
-  COMPLETED DOZER LINE
-  SCREEN ONLY DRAFTING
-  HISTORICAL FIRELINE
-  WILDERNESS AREA



0 0.5  
MILES  
NAD 83










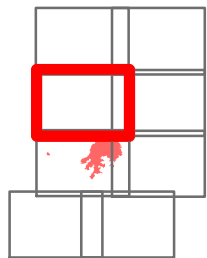


# IAP MAP

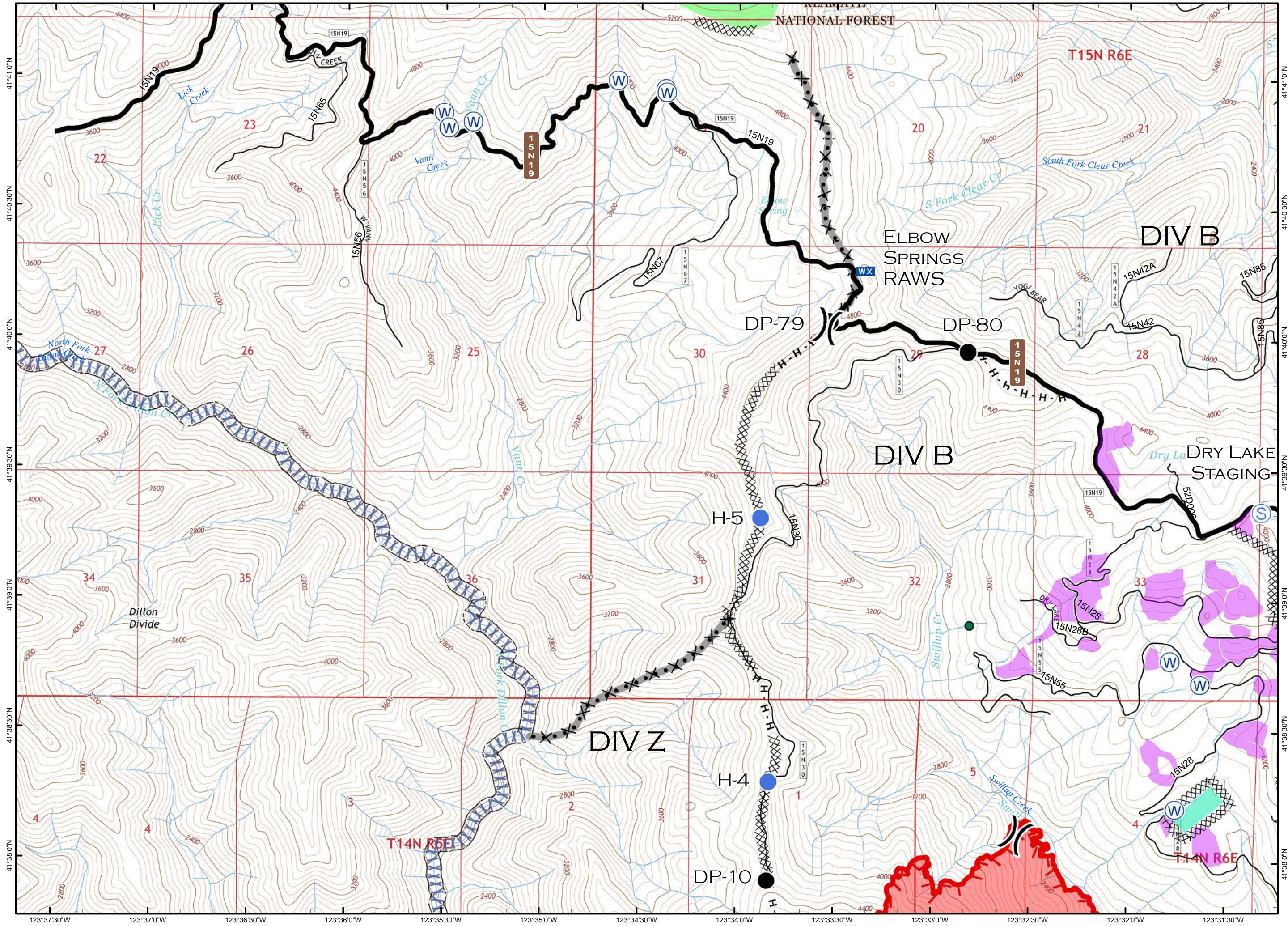
PONY INCIDENT  
CA-KNF-004500  
JUNE 13, 2016  
NIGHT SHIFT

PAGE 2 OF 8

-  DIVISION BREAK
-  DROP POINT
-  HELISPOT
-  MOBILE WEATHER UNIT
-  STAGING AREA
-  WATER SOURCE
-  UNCONTROLLED FIRE EDGE
-  COMPLETED DOZER LINE
-  HAND LINE
-  SPOTTED OWL SITE
-  PROGENY SITE
-  CRAWFORD PROJECT UNIT
-  SCREEN ONLY DRAFTING
-  HISTORICAL FIRELINE
-  WILDERNESS AREA



0 0.5  
MILES  
NAD 83

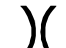





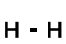







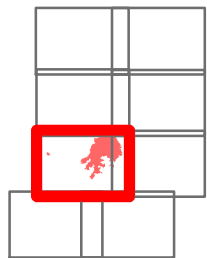


# IAP MAP

PONY INCIDENT  
CA-KNF-004500  
JUNE 13, 2016  
NIGHT SHIFT

PAGE 3 OF 8

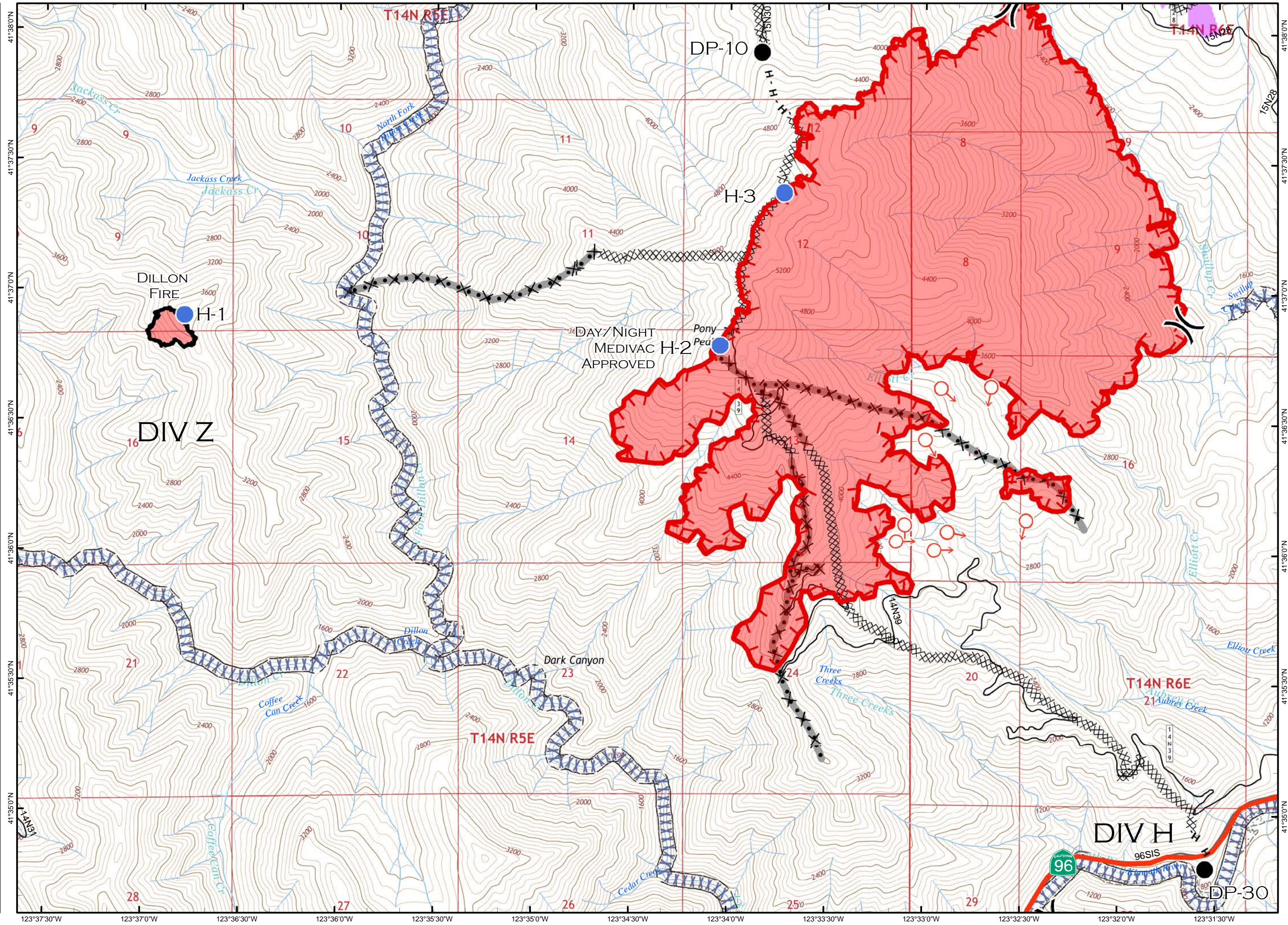
-  DIVISION BREAK
-  DROP POINT
-  HELISPOT
-  SPOT FIRE
-  UNCONTROLLED FIRE EDGE
-  COMPLETED DOZER LINE
-  COMPLETED LINE
-  HAND LINE
-  PROGENY SITE
-  CRAWFORD PROJECT UNIT
-  SCREEN ONLY DRAFTING
-  HISTORICAL FIRELINE



0 0.5

MILES

NAD 83

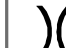






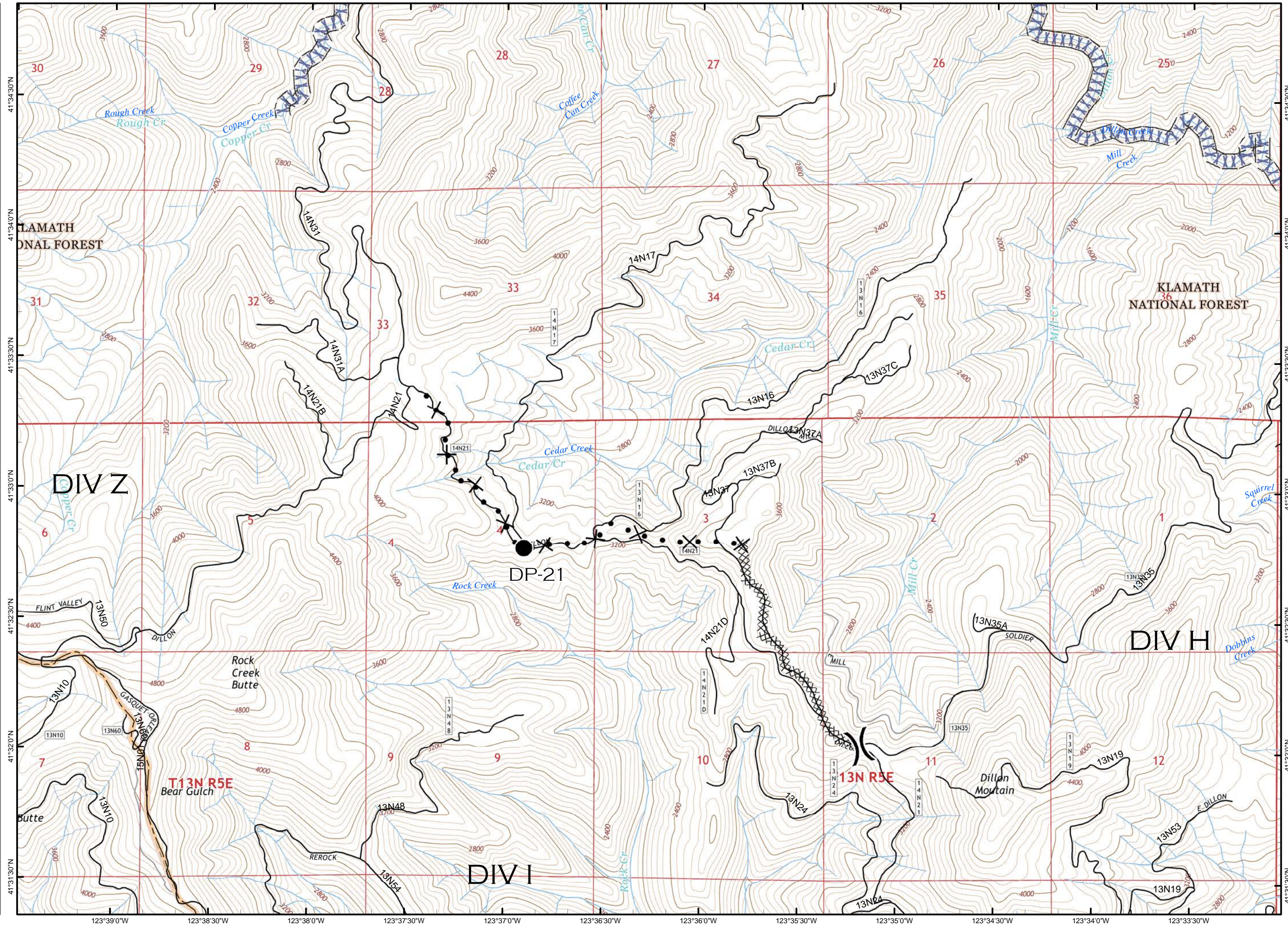
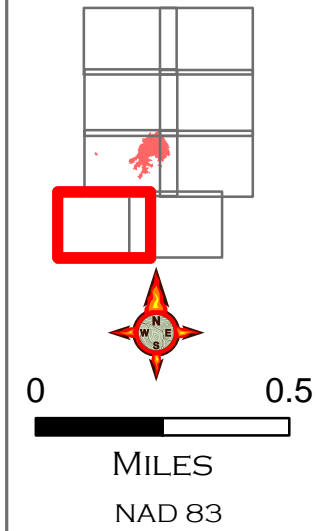


# IAP MAP

PONY INCIDENT  
CA-KNF-004500  
JUNE 13, 2016  
NIGHT SHIFT

PAGE 4 OF 8

-  DIVISION BREAK
-  DROP POINT
-  COMPLETED DOZER LINE
-  PROPOSED DOZER LINE
-  SCREEN ONLY DRAFTING



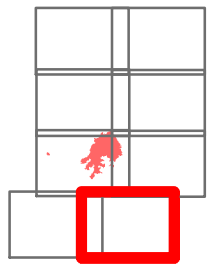


# IAP MAP

PONY INCIDENT  
CA-KNF-004500  
JUNE 13, 2016  
NIGHT SHIFT

PAGE 5 OF 8

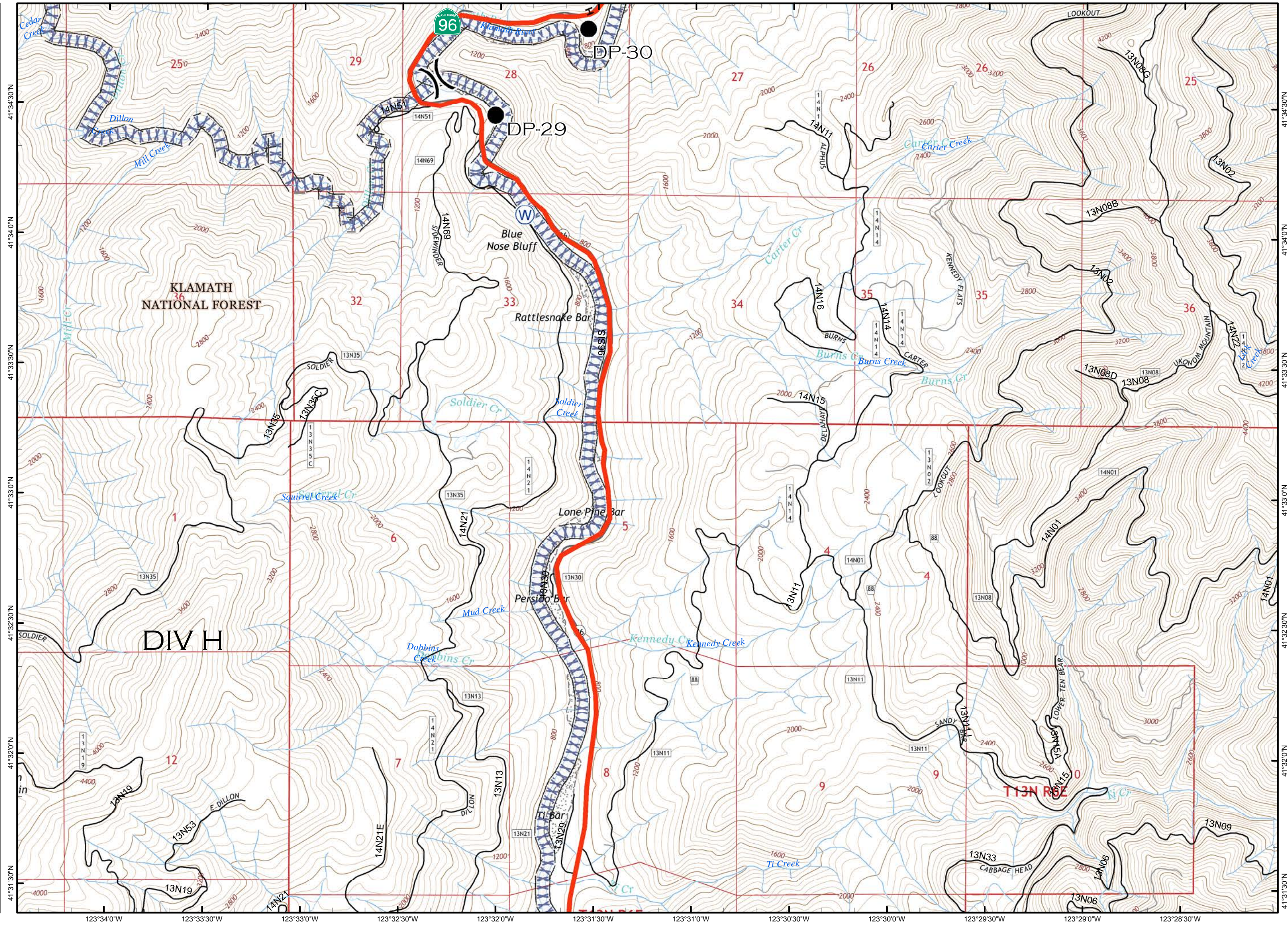
-  DIVISION BREAK
-  DROP POINT
-  WATER SOURCE
-  HAND LINE
-  SCREEN ONLY DRAFTING



0 0.5

MILES

NAD 83



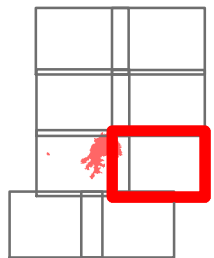


# IAP MAP

PONY INCIDENT  
CA-KNF-004500  
JUNE 13, 2016  
NIGHT SHIFT

PAGE 6 OF 8

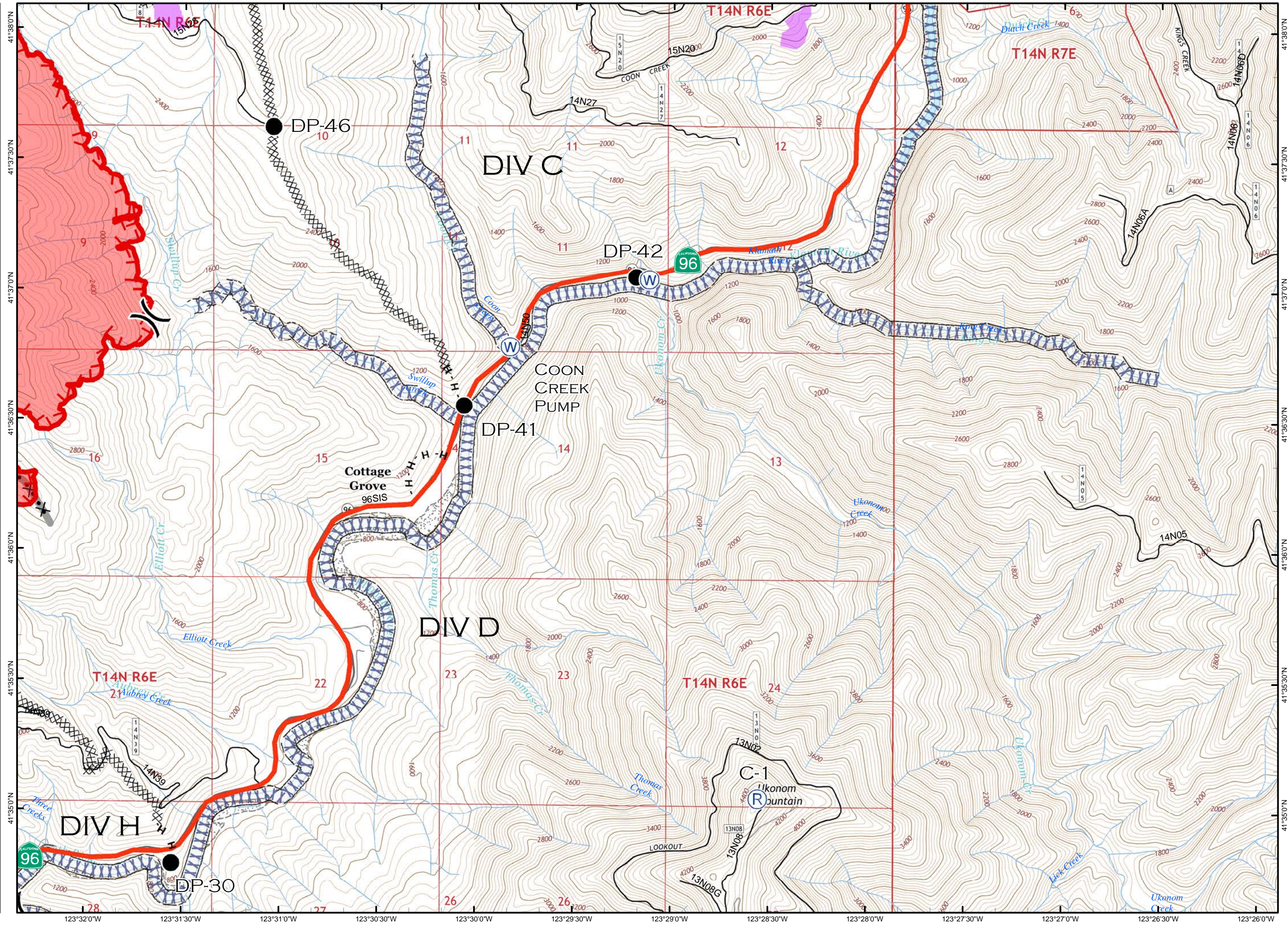
- ( ) DIVISION BREAK
- DROP POINT
- (R) REPEATER
- (W) WATER SOURCE
- ┌ UNCONTROLLED FIRE EDGE
- XXXX COMPLETED DOZER LINE
- H · H HAND LINE
- ◊ CRAWFORD PROJECT UNIT
- ▤ SCREEN ONLY DRAFTING
- ⊗ HISTORICAL FIRELINE



0 0.5

MILES

NAD 83



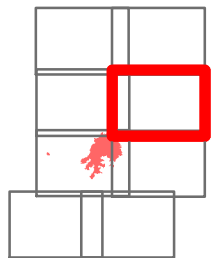


# IAP MAP

PONY INCIDENT  
CA-KNF-004500  
JUNE 13, 2016  
NIGHT SHIFT

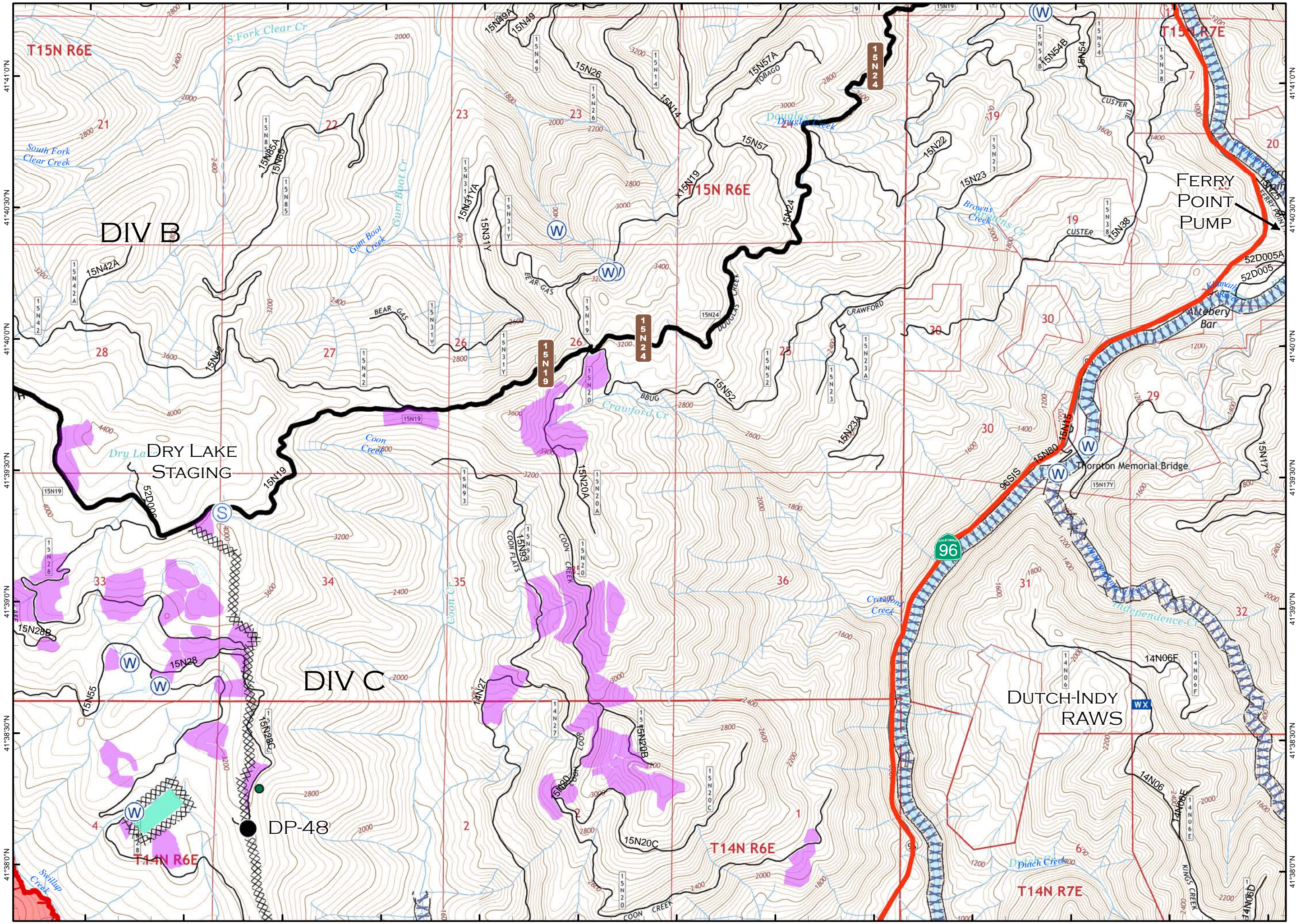
PAGE 7 OF 8

-  DIVISION BREAK
-  DROP POINT
-  MOBILE WEATHER UNIT
-  STAGING AREA
-  WATER SOURCE
-  UNCONTROLLED FIRE EDGE
-  COMPLETED DOZER LINE
-  HAND LINE
-  SPOTTED OWL SITE
-  PROGENY SITE
-  CRAWFORD PROJECT UNIT
-  SCREEN ONLY DRAFTING



0 0.5

MILES  
NAD 83



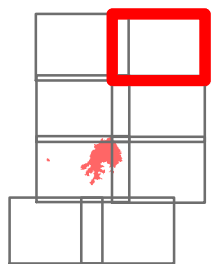


# IAP MAP

PONY INCIDENT  
CA-KNF-004500  
JUNE 13, 2016  
NIGHT SHIFT

PAGE 8 OF 8

- DIVISION BREAK
- STAGING AREA
- WATER SOURCE
- SCREEN ONLY DRAFTING
- WILDERNESS AREA



0 0.5

MILES  
NAD 83

