

IAP MAP

PONY INCIDENT
CA-KNF-004500
JUNE 15, 2016

3,042 ACRES
AS OF 21:36
06/14/16

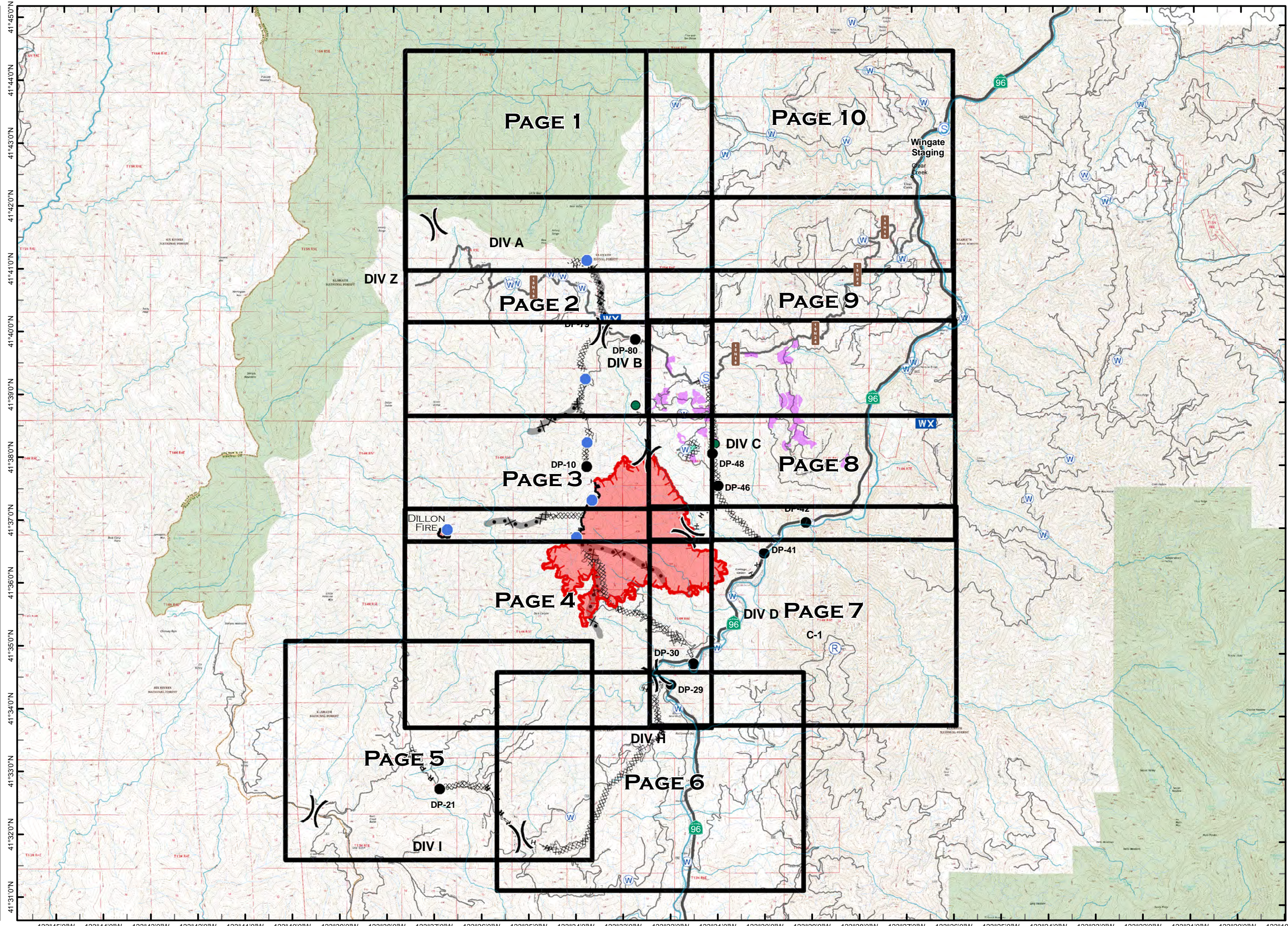
- Minor Streams
- Major Streams
- Rivers
- Grid
- DROP POINT
- HELISPOT
- MOBILE WEATHER UNIT
- REPEATER
- STAGING AREA
- WATER SOURCE
- UNCONTROLLED FIRE EDGE
- COMPLETED DOZER LINE
- COMPLETED LINE
- H · H · HAND LINE
- R · R · ROAD AS COMPLETED LINE
- DIVISION BREAK
- SPOTTED OWL SITE
- PROGENY SITE
- CRAWFORD PROJECT UNIT
- HISTORICAL FIRELINE
- WILDERNESS AREA



0 1 2

MILES

NAD 83

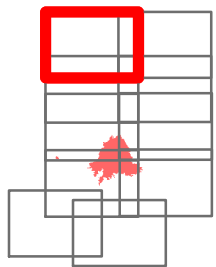


IAP MAP

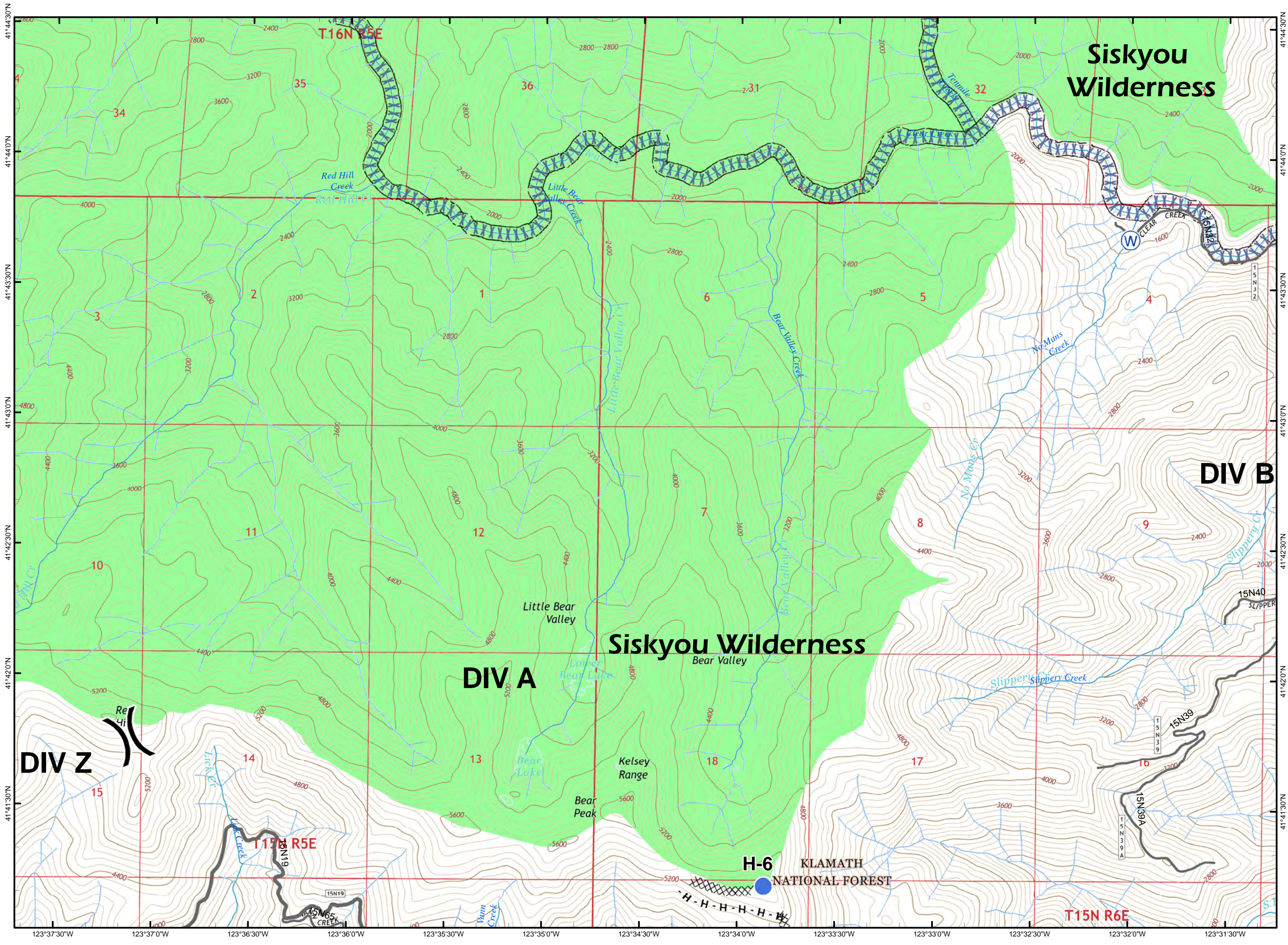
PONY INCIDENT
CA-KNF-004500
JUNE 15, 2016

PAGE 1 OF 10

-  HELISPOT
-  WATER SOURCE
-  COMPLETED DOZER LINE
-  HAND LINE
-  DIVISION BREAK
-  Minor Streams
-  Major Streams
-  SCREEN ONLY DRAFTING
-  WILDERNESS AREA



0 0.5
MILES
NAD 83

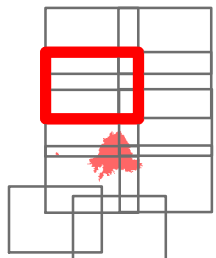


IAP MAP

PONY INCIDENT
CA-KNF-004500
JUNE 15, 2016

PAGE 2 OF 10

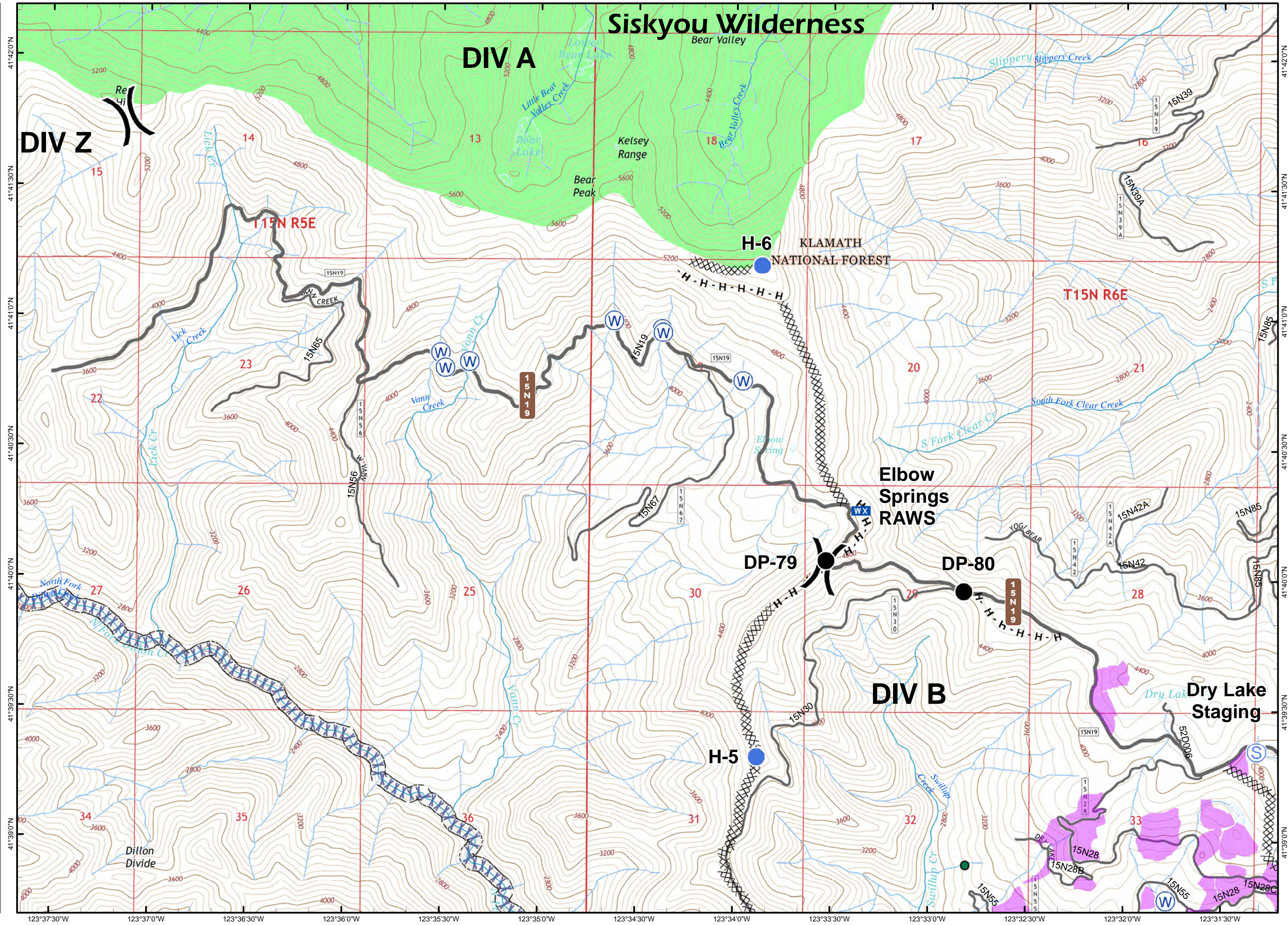
- DROP POINT
- HELISPOT
- WX MOBILE WEATHER UNIT
- Ⓢ STAGING AREA
- Ⓜ WATER SOURCE
- XXXX COMPLETED DOZER LINE
- H-H HAND LINE
-) DIVISION BREAK
- SPOTTED OWL SITE
- 🦋 CRAWFORD PROJECT UNIT
- Minor Streams
- Major Streams
- XXXX SCREEN ONLY DRAFTING
- 🌿 WILDERNESS AREA



0 0.5

MILES

NAD 83

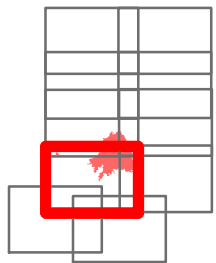


IAP MAP

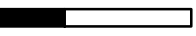
PONY INCIDENT
CA-KNF-004500
JUNE 15, 2016

PAGE 4 OF 10

-  DROP POINT
-  HELISPOT
-  WATER SOURCE
-  UNCONTROLLED FIRE EDGE
-  COMPLETED DOZER LINE
-  COMPLETED LINE
-  HAND LINE
-  DIVISION BREAK
-  Minor Streams
-  Major Streams
-  Rivers
-  SCREEN ONLY DRAFTING

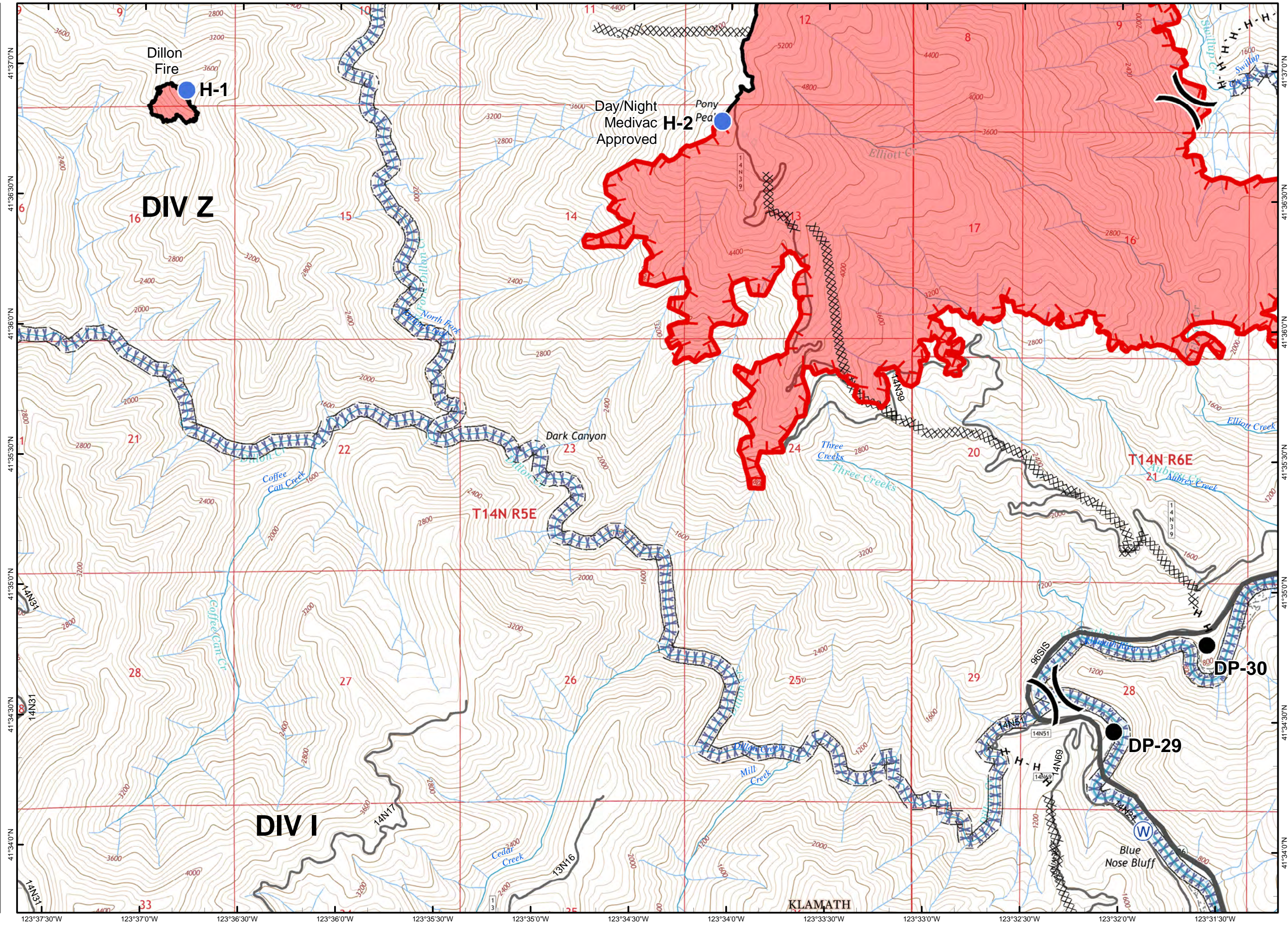


0 0.5



MILES

NAD 83



Dillon Fire
H-1

Day/Night Medivac Approved
Pony Ped
H-2

DIV Z

Dark Canyon

T14N/R5E

T14N R6E

DIV I

KLAMATH

DP-30

DP-29

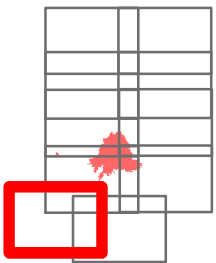
Blue Nose Bluff

IAP MAP

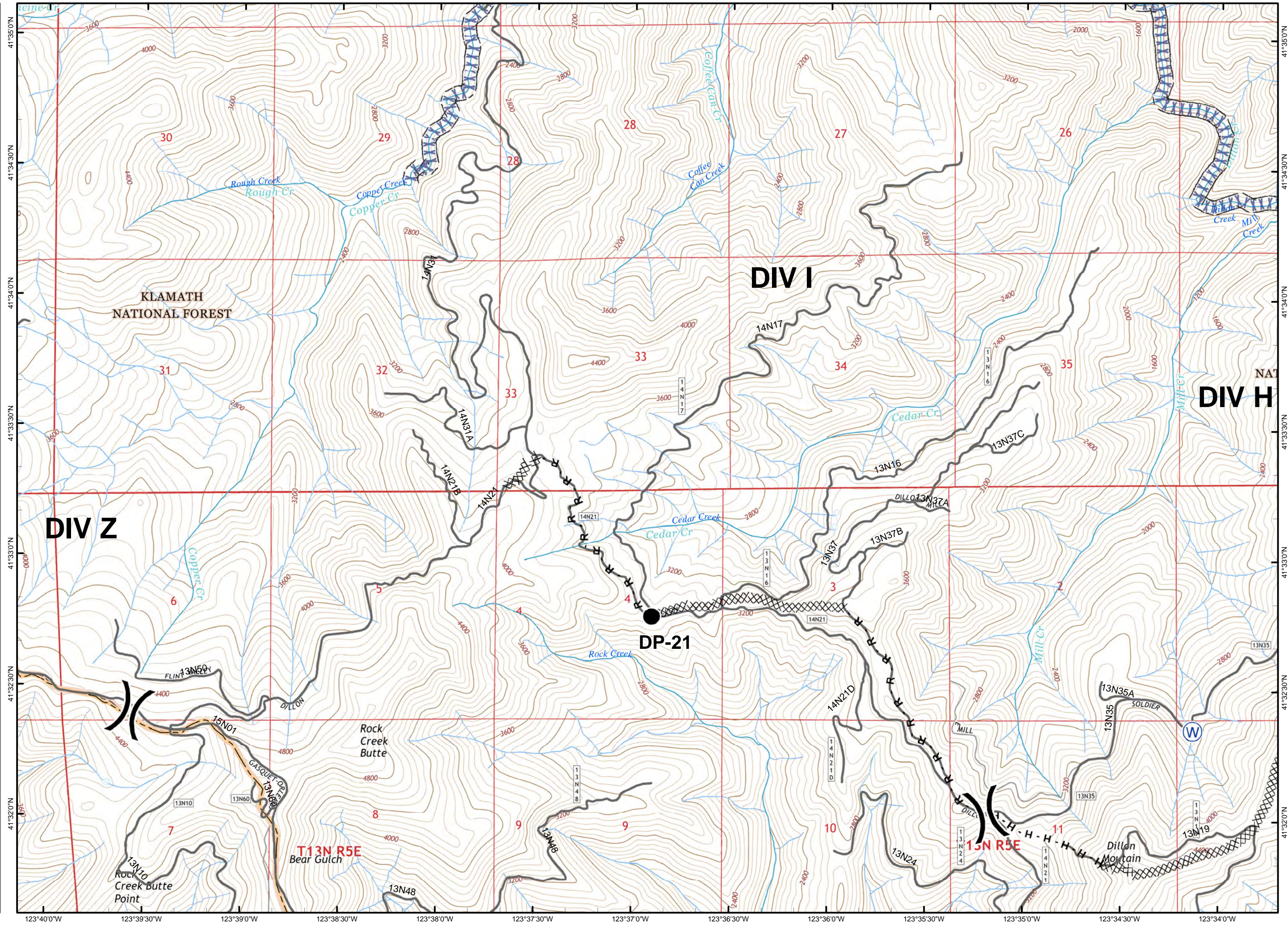
PONY INCIDENT
CA-KNF-004500
JUNE 15, 2016

PAGE 5 OF 10

- DROP POINT
- W WATER SOURCE
- XXXX COMPLETED DOZER LINE
- H · H HAND LINE
- R · R ROAD AS COMPLETED LINE
-) DIVISION BREAK
- Minor Streams
- Major Streams
- XXXXX SCREEN ONLY DRAFTING



0 0.5
MILES
NAD 83

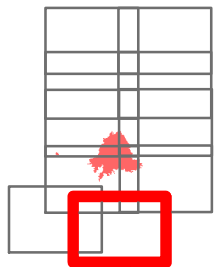


IAP MAP

PONY INCIDENT
CA-KNF-004500
JUNE 15, 2016

PAGE 6 OF 10

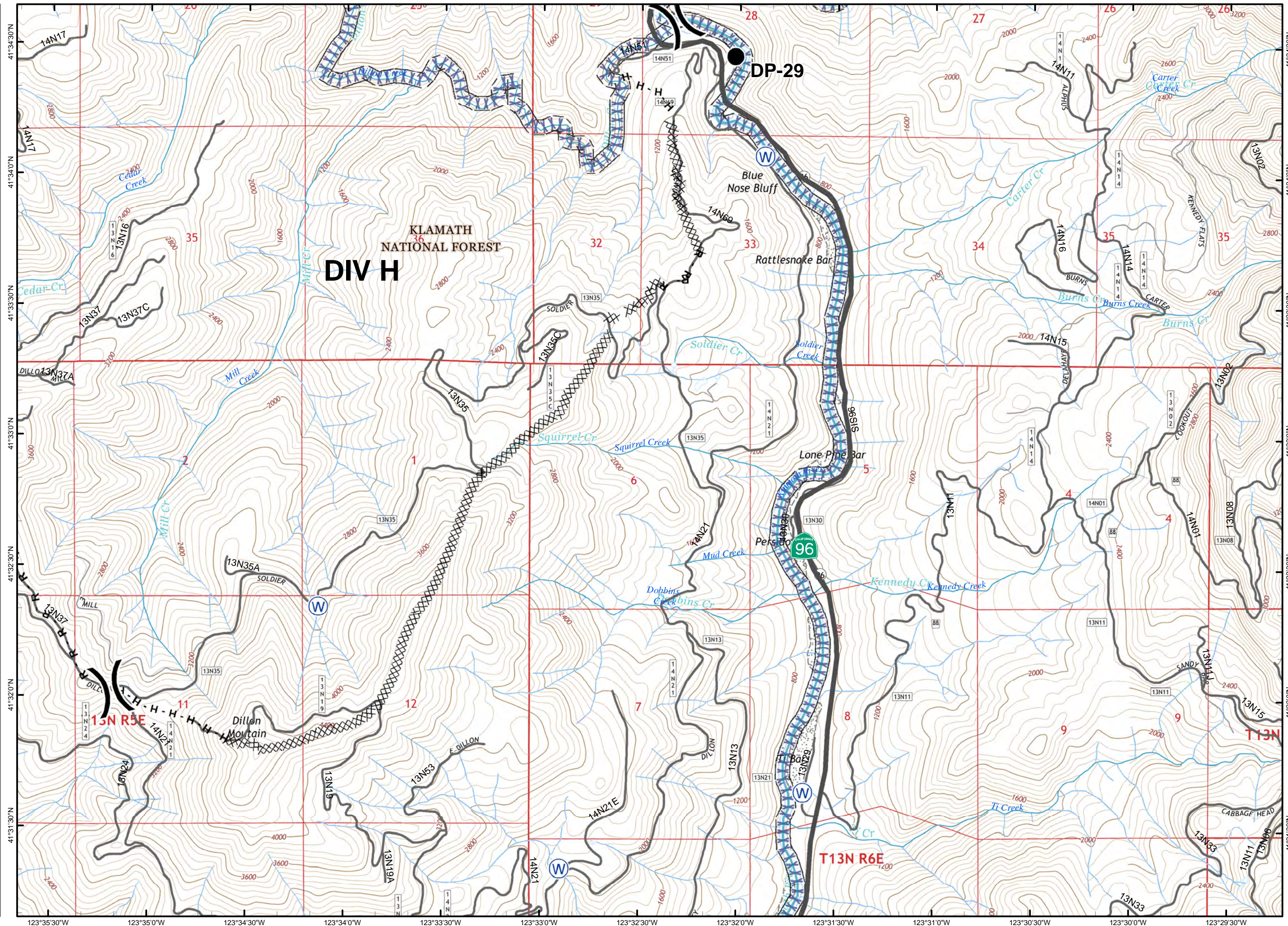
- DROP POINT
- ⊙ WATER SOURCE
- XXXX COMPLETED DOZER LINE
- H · H HAND LINE
- R · R ROAD AS COMPLETED LINE
-) DIVISION BREAK
- Minor Streams
- Major Streams
- Rivers
- XXXXX SCREEN ONLY DRAFTING



0 0.5

MILES

NAD 83

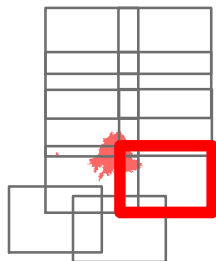


IAP MAP

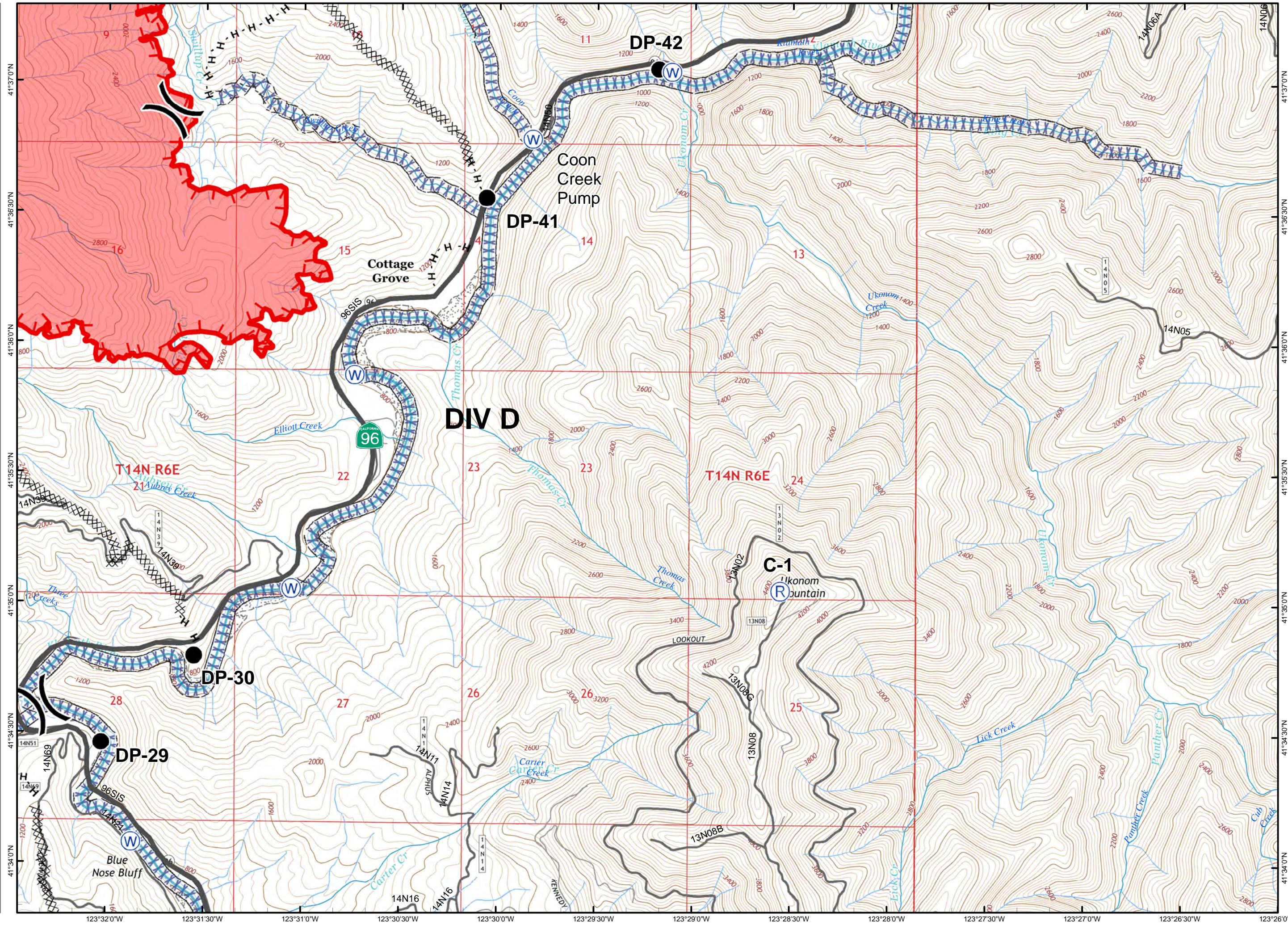
PONY INCIDENT
CA-KNF-004500
JUNE 15, 2016

PAGE 7 OF 10

- DROP POINT
- Ⓡ REPEATER
- Ⓜ WATER SOURCE
- UNCONTROLLED FIRE EDGE
- XXXX COMPLETED DOZER LINE
- H · H HAND LINE
-) DIVISION BREAK
- Minor Streams
- Major Streams
- Rivers
- XXXX SCREEN ONLY DRAFTING



0 0.5
MILES
NAD 83

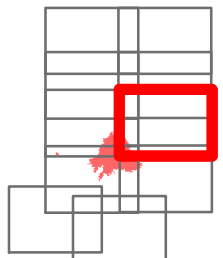


IAP MAP

PONY INCIDENT
CA-KNF-004500
JUNE 15, 2016

PAGE 8 OF 10

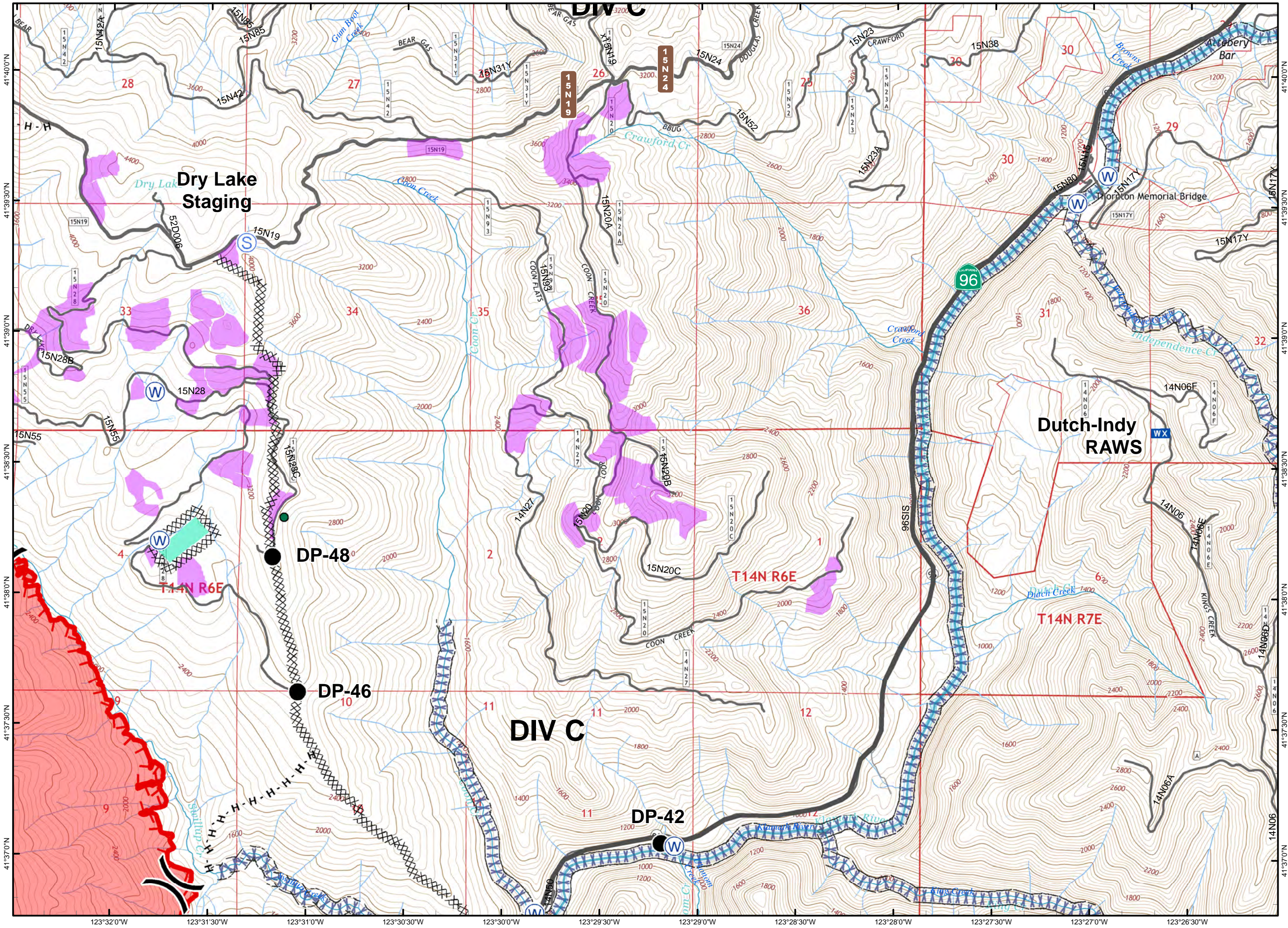
- DROP POINT
- WX MOBILE WEATHER UNIT
- S STAGING AREA
- W WATER SOURCE
- UNCONTROLLED FIRE EDGE
- XXXX COMPLETED DOZER LINE
- H-H HAND LINE
- () DIVISION BREAK
- SPOTTED OWL SITE
- PROGENY SITE
- CRAWFORD PROJECT UNIT
- Minor Streams
- Major Streams
- Rivers
- SCREEN ONLY DRAFTING



0 0.5

MILES


NAD 83

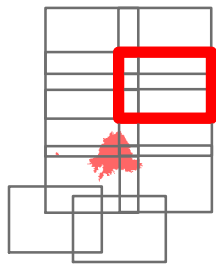


IAP MAP

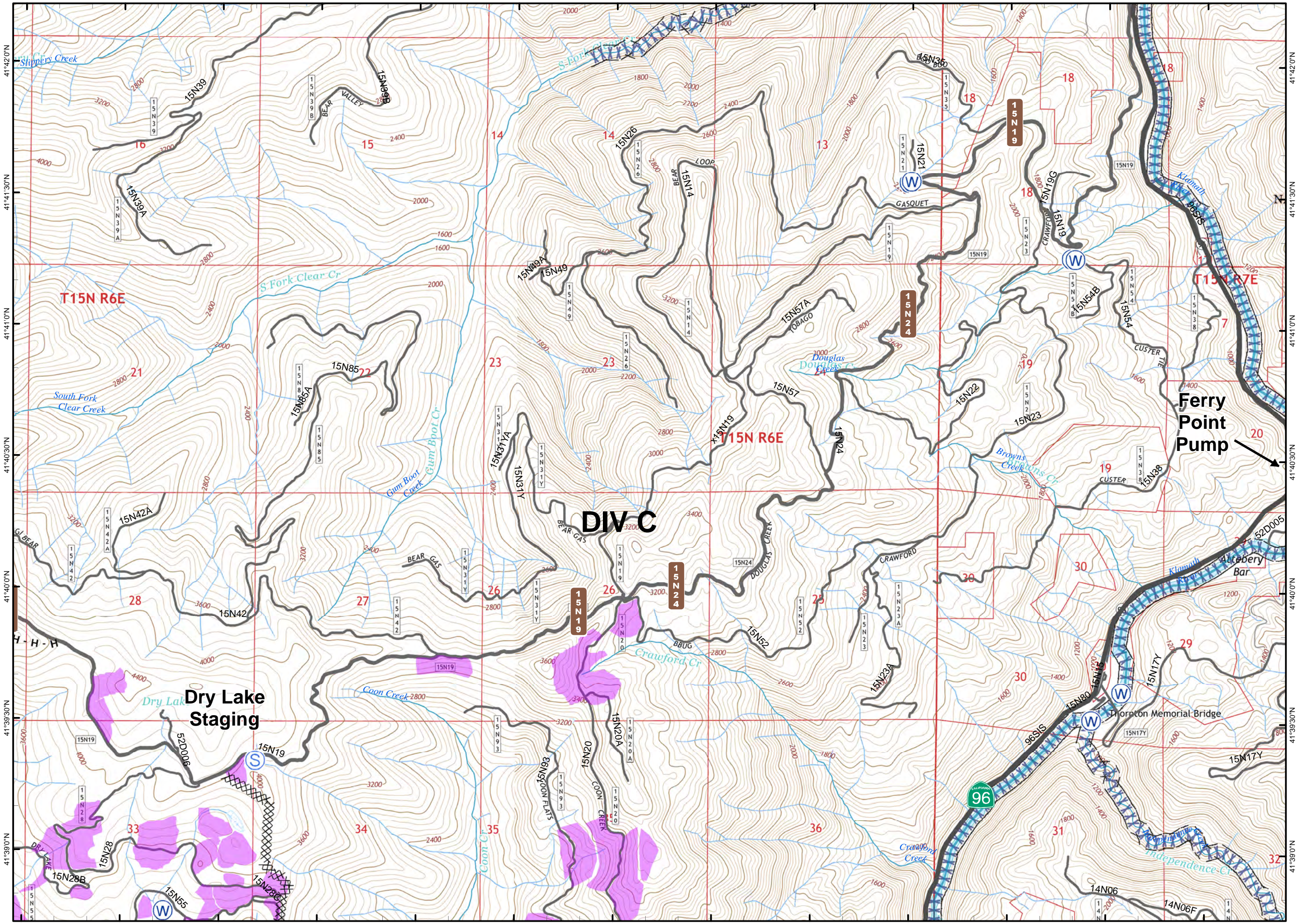
PONY INCIDENT
CA-KNF-004500
JUNE 15, 2016

PAGE 9 OF 10

-  STAGING AREA
-  WATER SOURCE
-  COMPLETED DOZER LINE
-  HAND LINE
-  DIVISION BREAK
-  CRAWFORD PROJECT UNIT
-  Minor Streams
-  Major Streams
-  Rivers
-  SCREEN ONLY DRAFTING










0 0.5
MILES
NAD 83

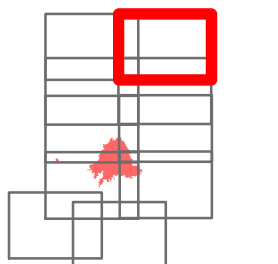


IAP MAP

PONY INCIDENT
CA-KNF-004500
JUNE 15, 2016

PAGE 10 OF 10

-  STAGING AREA
-  WATER SOURCE
-  DIVISION BREAK
-  Minor Streams
-  Major Streams
-  Rivers
-  SCREEN ONLY DRAFTING
-  WILDERNESS AREA



0 0.5

MILES

NAD 83

