

IAP MAP

PONY INCIDENT
CA-KNF-004500
JUNE 15, 2016

2,706 ACRES
AS OF 21:36
06/15/16

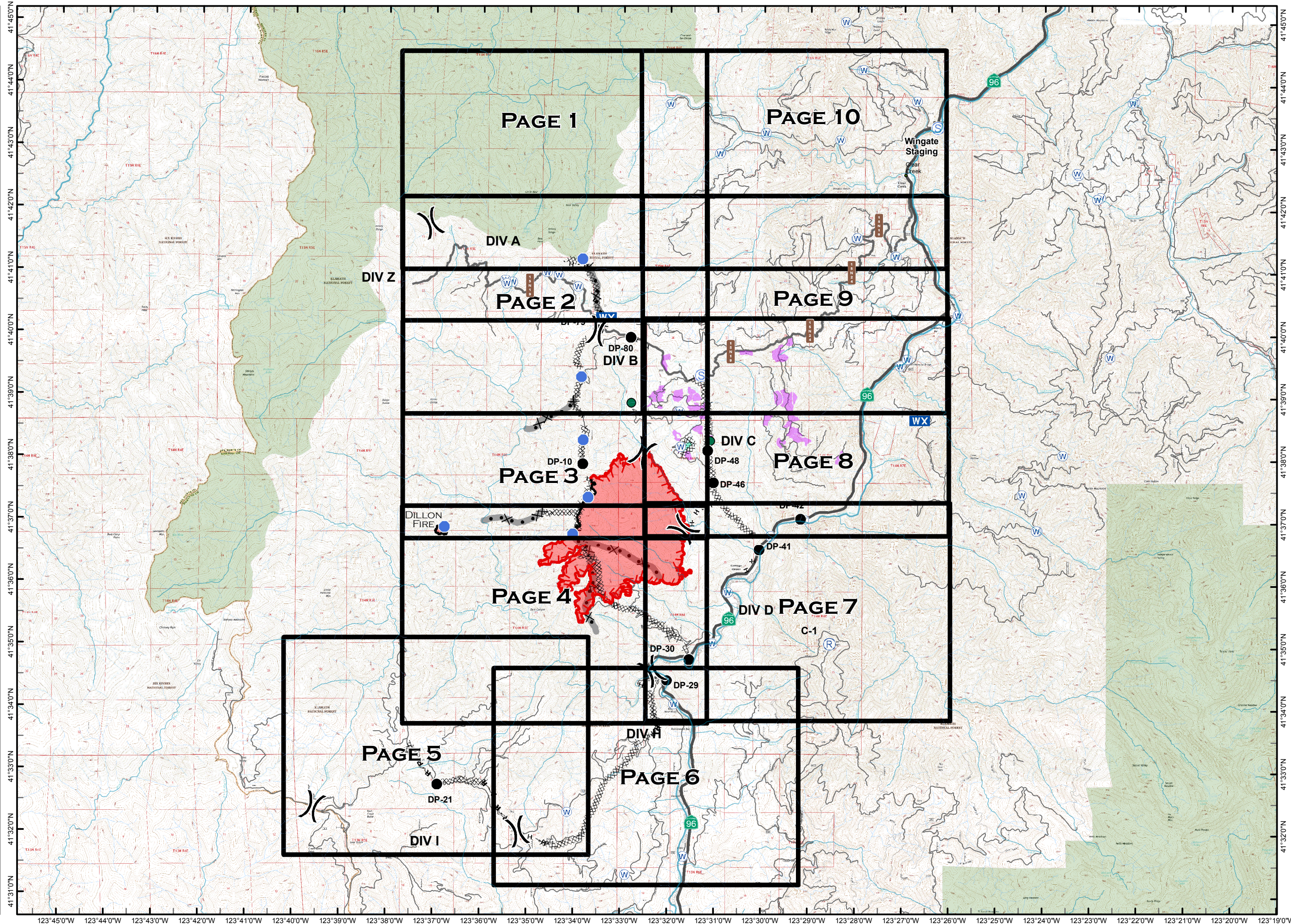
- Minor Streams
- Major Streams
- Rivers
- Grid
- DROP POINT
- HELISPOT
- WX MOBILE WEATHER UNIT
- REPEATER
- STAGING AREA
- WATER SOURCE
- UNCONTROLLED FIRE EDGE
- COMPLETED DOZER LINE
- COMPLETED LINE
- H · H · HAND LINE
- R · R · ROAD AS COMPLETED LINE
- DIVISION BREAK
- SPOTTED OWL SITE
- PROGENY SITE
- CRAWFORD PROJECT UNIT
- HISTORICAL FIRELINE
- WILDERNESS AREA



0 1 2

MILES

NAD 83



123°45'0"W 123°44'0"W 123°43'0"W 123°42'0"W 123°41'0"W 123°40'0"W 123°39'0"W 123°38'0"W 123°37'0"W 123°36'0"W 123°35'0"W 123°34'0"W 123°33'0"W 123°32'0"W 123°31'0"W 123°30'0"W 123°29'0"W 123°28'0"W 123°27'0"W 123°26'0"W 123°25'0"W 123°24'0"W 123°23'0"W 123°22'0"W 123°21'0"W 123°20'0"W 123°19'0"W