

IAP MAP

PONY INCIDENT
CA-KNF-004500
JUNE 16, 2016

2,706 ACRES
AS OF 21:36
06/15/16

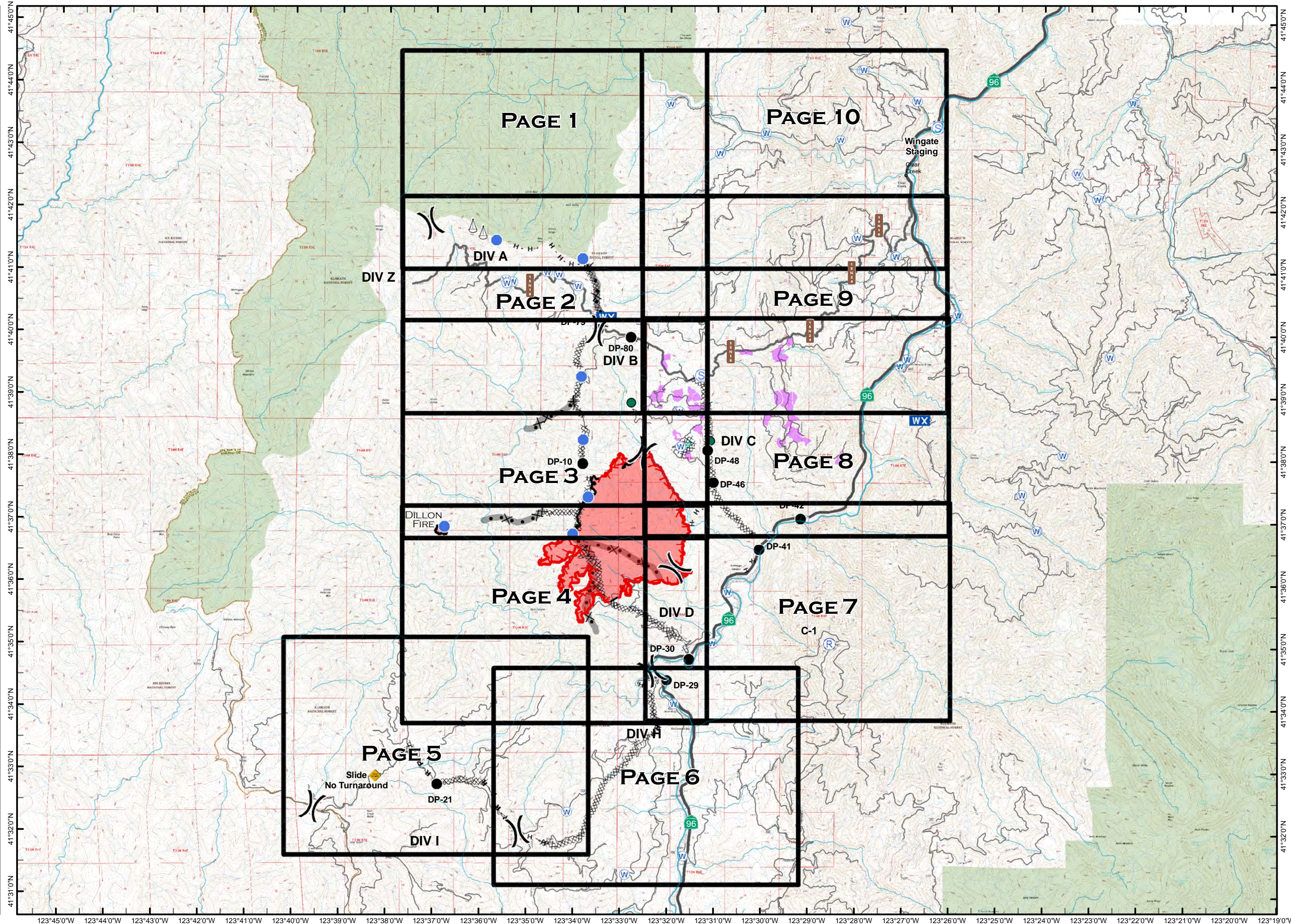
- Minor Streams
- Major Streams
- Rivers
- Grid
- OTHER
- DROP POINT
- HELISPOT
- MOBILE WEATHER UNIT
- REPEATER
- SLING SITE
- STAGING AREA
- WATER SOURCE
- UNCONTROLLED FIRE EDGE
- COMPLETED DOZER LINE
- COMPLETED LINE
- H - H - HAND LINE
- R - R - ROAD AS COMPLETED LINE
- DIVISION BREAK
- SPOTTED OWL SITE
- PROGENY SITE
- CRAWFORD PROJECT UNIT
- HISTORICAL FIRELINE
- WILDERNESS AREA



0 1 2

MILES






NAD 83

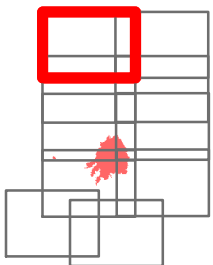


IAP MAP

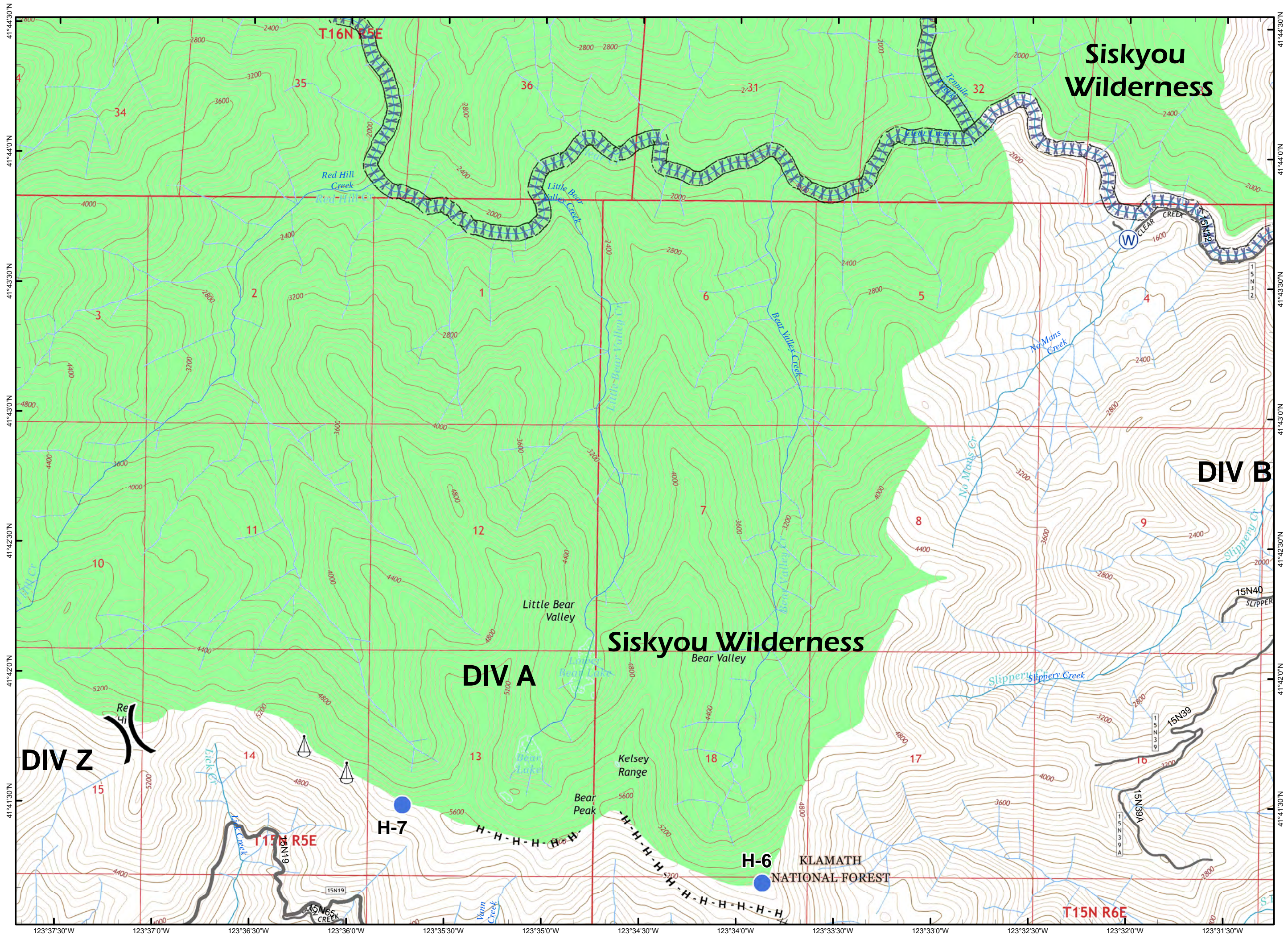
PONY INCIDENT
CA-KNF-004500
JUNE 16, 2016

PAGE 1 OF 10

-  HELISPOT
-  SLING SITE
-  WATER SOURCE
-  COMPLETED DOZER LINE
-  HAND LINE
-  DIVISION BREAK
-  Minor Streams
-  Major Streams
-  SCREEN ONLY DRAFTING
-  WILDERNESS AREA



0 0.5
MILES
NAD 83

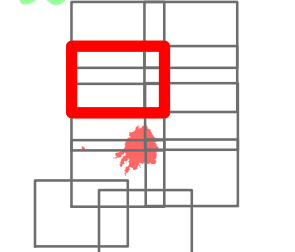


IAP MAP

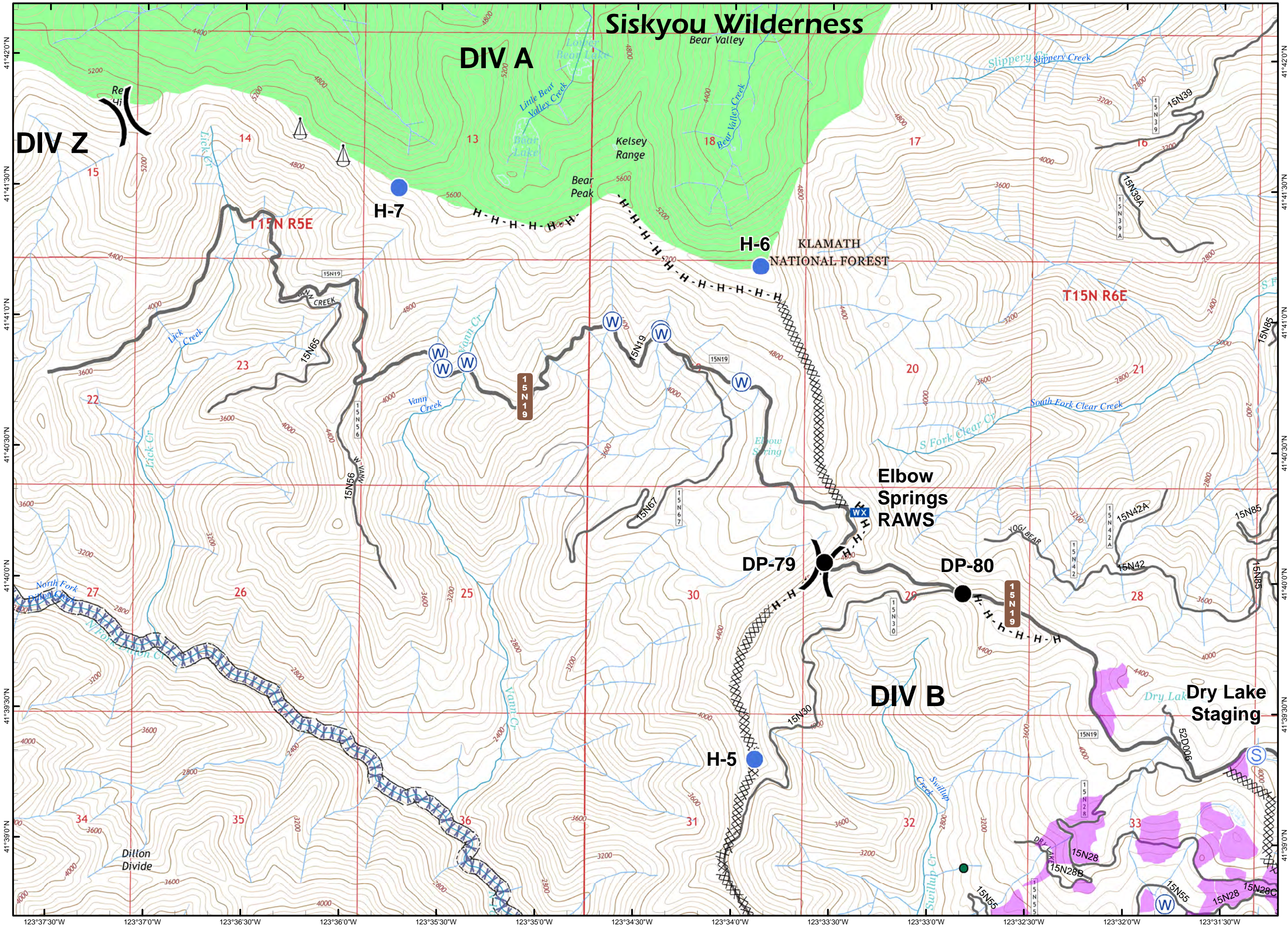
PONY INCIDENT
CA-KNF-004500
JUNE 16, 2016

PAGE 2 OF 10

- DROP POINT
- HELISPOT
- WX MOBILE WEATHER UNIT
- ⚓ SLING SITE
- Ⓢ STAGING AREA
- Ⓜ WATER SOURCE
- XXXX COMPLETED DOZER LINE
- H-H HAND LINE
-) DIVISION BREAK
- SPOTTED OWL SITE
- 👉 CRAWFORD PROJECT UNIT
- Minor Streams
- Major Streams
- XXXXX SCREEN ONLY DRAFTING
- 🌿 WILDERNESS AREA



MILES
NAD 83

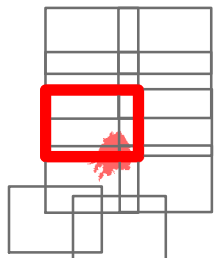


IAP MAP

PONY INCIDENT
CA-KNF-004500
JUNE 16, 2016

PAGE 3 OF 10

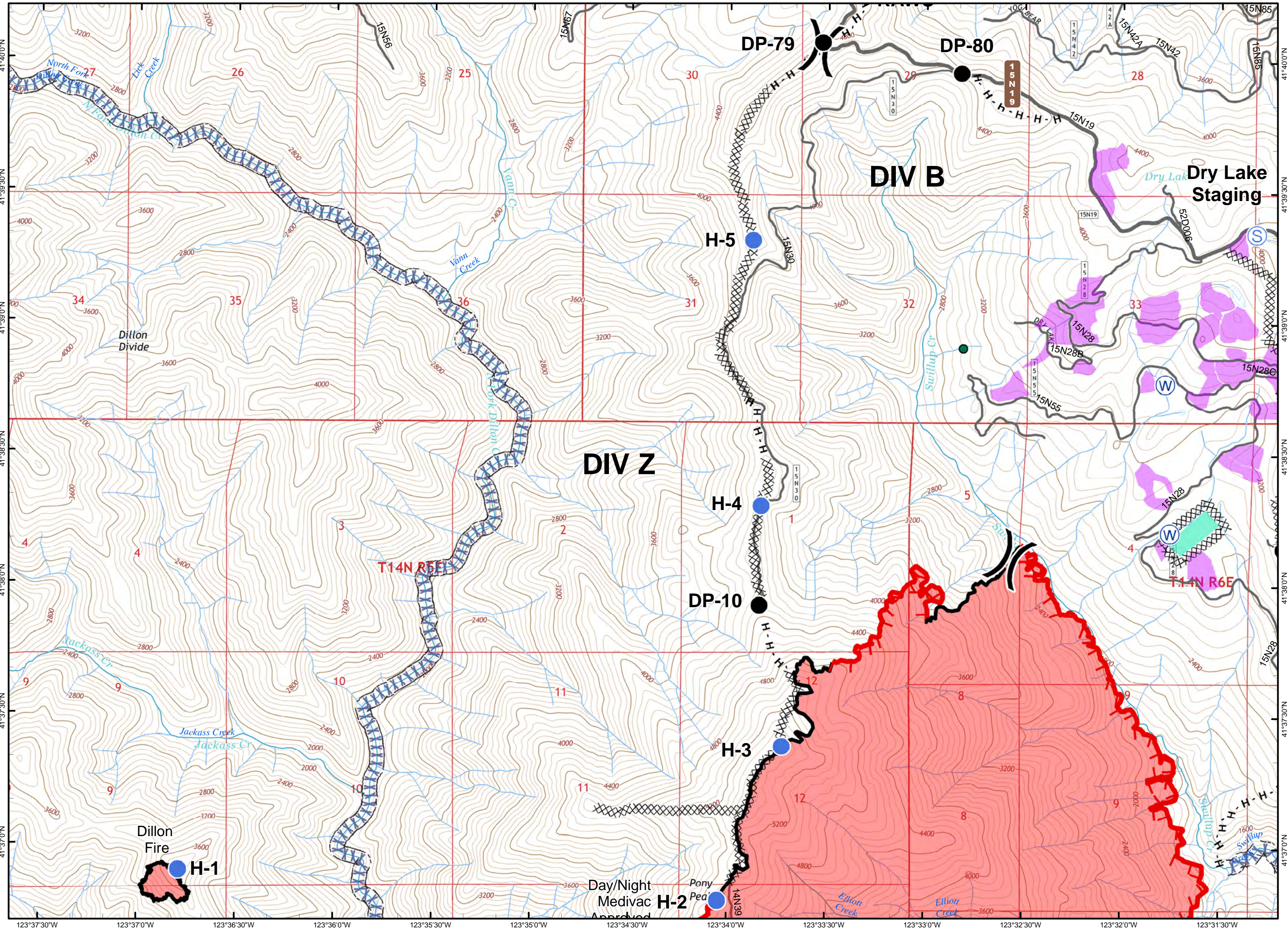
- DROP POINT
- HELISPOT
- Ⓢ STAGING AREA
- Ⓜ WATER SOURCE
- ┌ UNCONTROLLED FIRE EDGE
- XXXX COMPLETED DOZER LINE
- COMPLETED LINE
- H-H HAND LINE
-) DIVISION BREAK
- SPOTTED OWL SITE
- PROGENY SITE
- CRAWFORD PROJECT UNIT
- Minor Streams
- Major Streams
- XXXX SCREEN ONLY DRAFTING



0 0.5

MILES

NAD 83



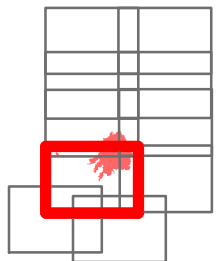
123°37'30"W 123°37'0"W 123°36'30"W 123°36'0"W 123°35'30"W 123°35'0"W 123°34'30"W 123°34'0"W 123°33'30"W 123°33'0"W 123°32'30"W 123°32'0"W 123°31'30"W

IAP MAP

PONY INCIDENT
CA-KNF-004500
JUNE 16, 2016

PAGE 4 OF 10

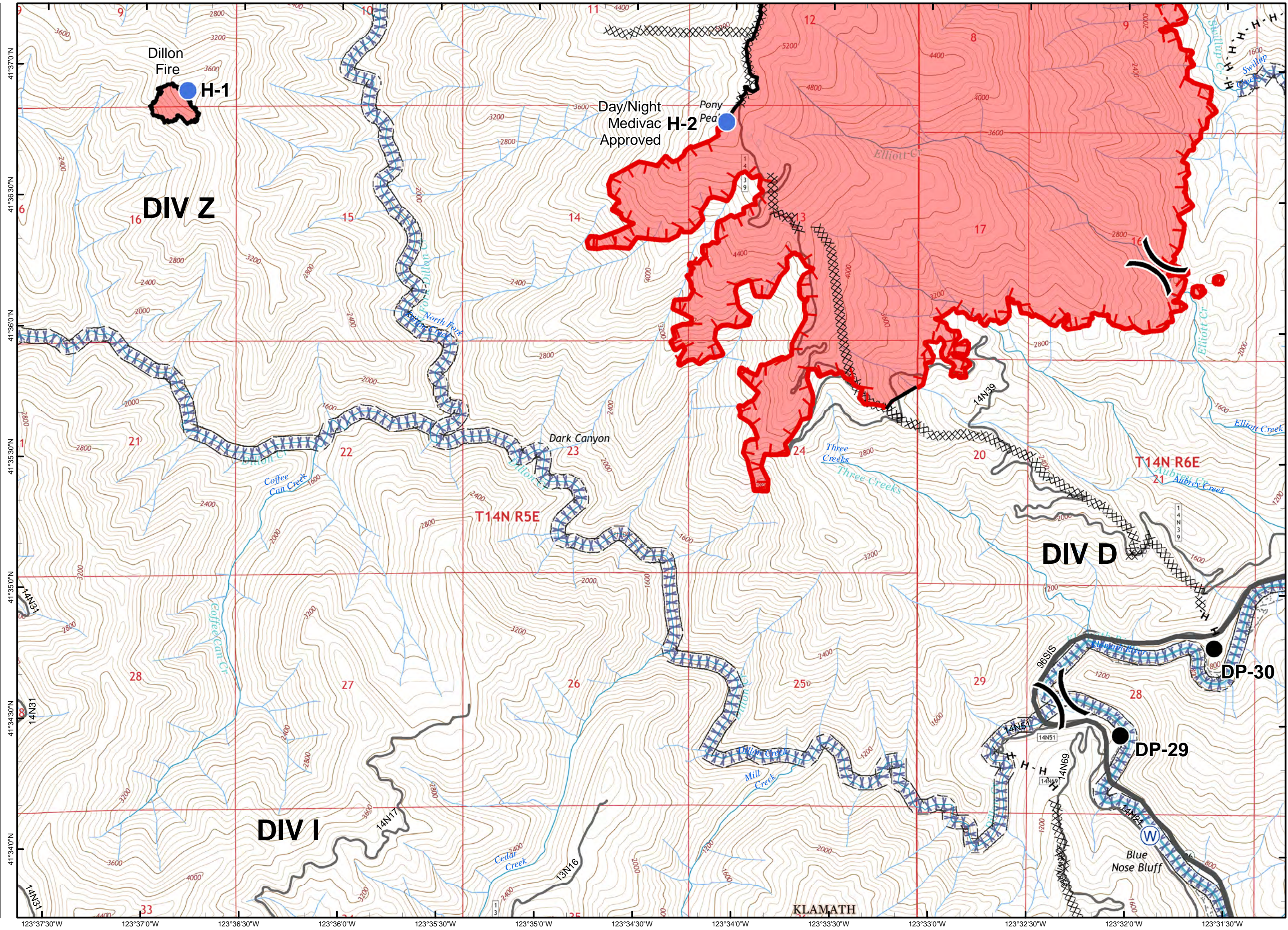
- DROP POINT
- HELISPOT
- W WATER SOURCE
- UNCONTROLLED FIRE EDGE
- XXXX COMPLETED DOZER LINE
- COMPLETED LINE
- H · H HAND LINE
-) DIVISION BREAK
- Minor Streams
- Major Streams
- Rivers
- XXXXX SCREEN ONLY DRAFTING



0 0.5

MILES

NAD 83

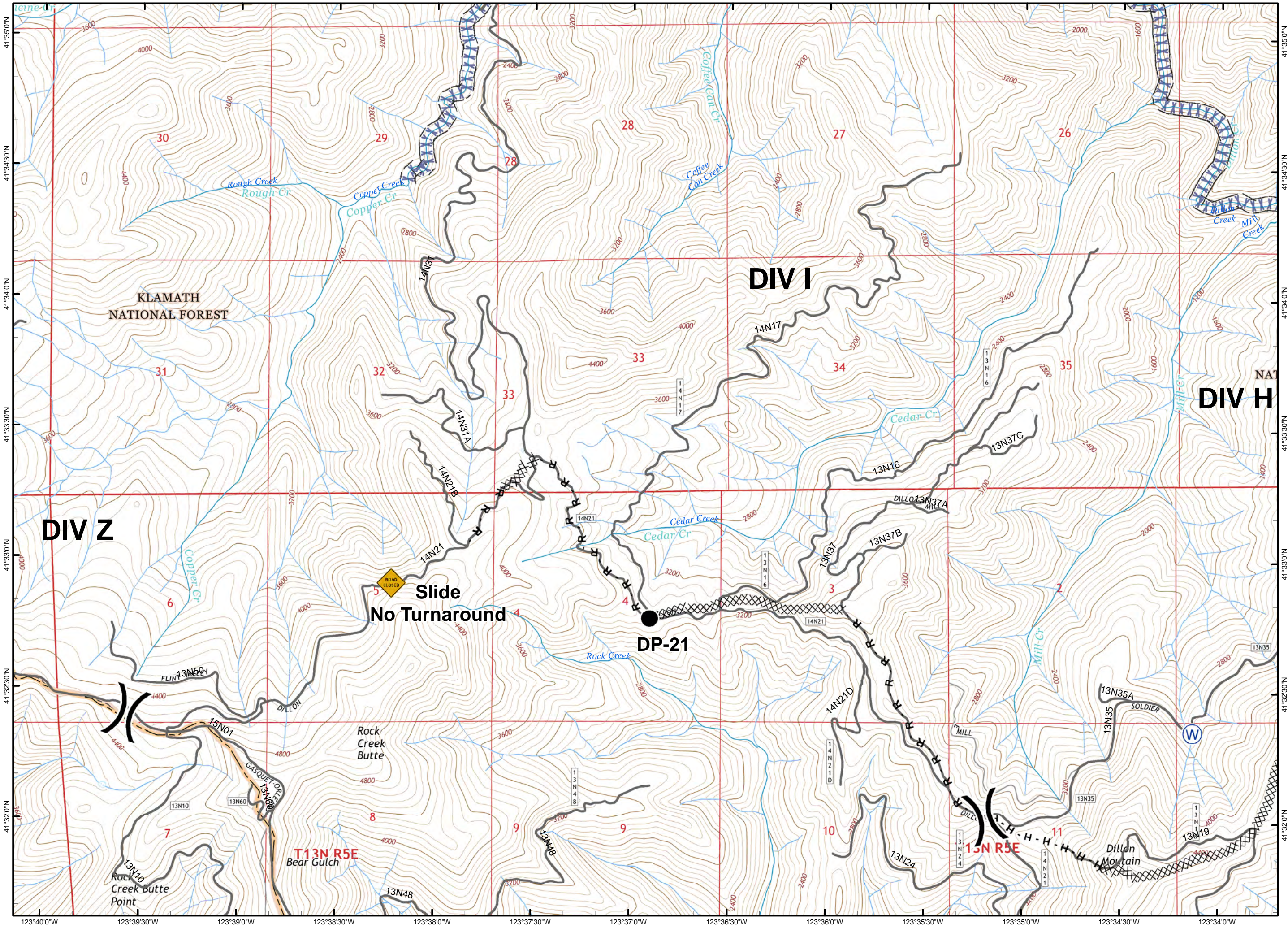
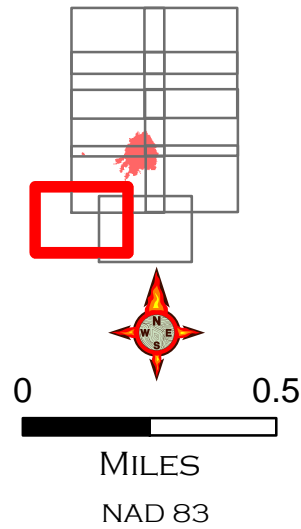


IAP MAP

PONY INCIDENT
CA-KNF-004500
JUNE 16, 2016

PAGE 5 OF 10

-  SLIDE
-  DROP POINT
-  WATER SOURCE
-  COMPLETED DOZER LINE
-  HAND LINE
-  ROAD AS COMPLETED LINE
-  DIVISION BREAK
-  Minor Streams
-  Major Streams
-  SCREEN ONLY DRAFTING

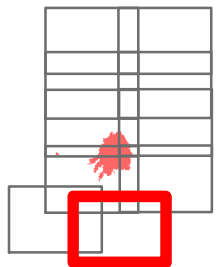


IAP MAP

PONY INCIDENT
CA-KNF-004500
JUNE 16, 2016

PAGE 6 OF 10

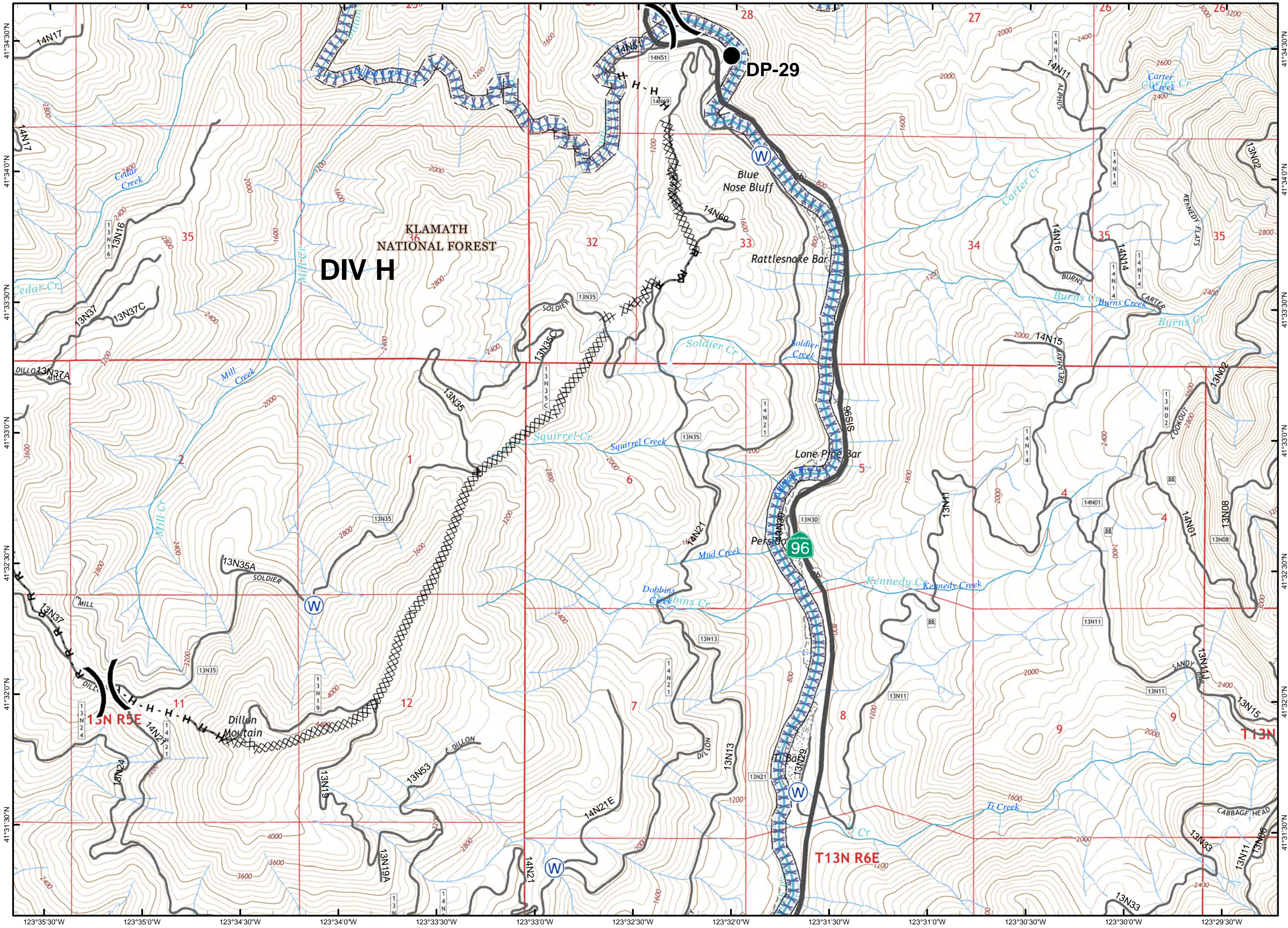
- DROP POINT
- ⊙ WATER SOURCE
- XXXX COMPLETED DOZER LINE
- H · H HAND LINE
- R · R ROAD AS COMPLETED LINE
-) DIVISION BREAK
- Minor Streams
- Major Streams
- Rivers
- XXXXX SCREEN ONLY DRAFTING



0 0.5

MILES

NAD 83

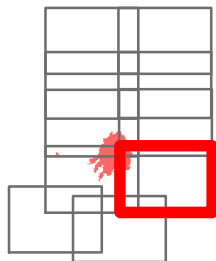


IAP MAP

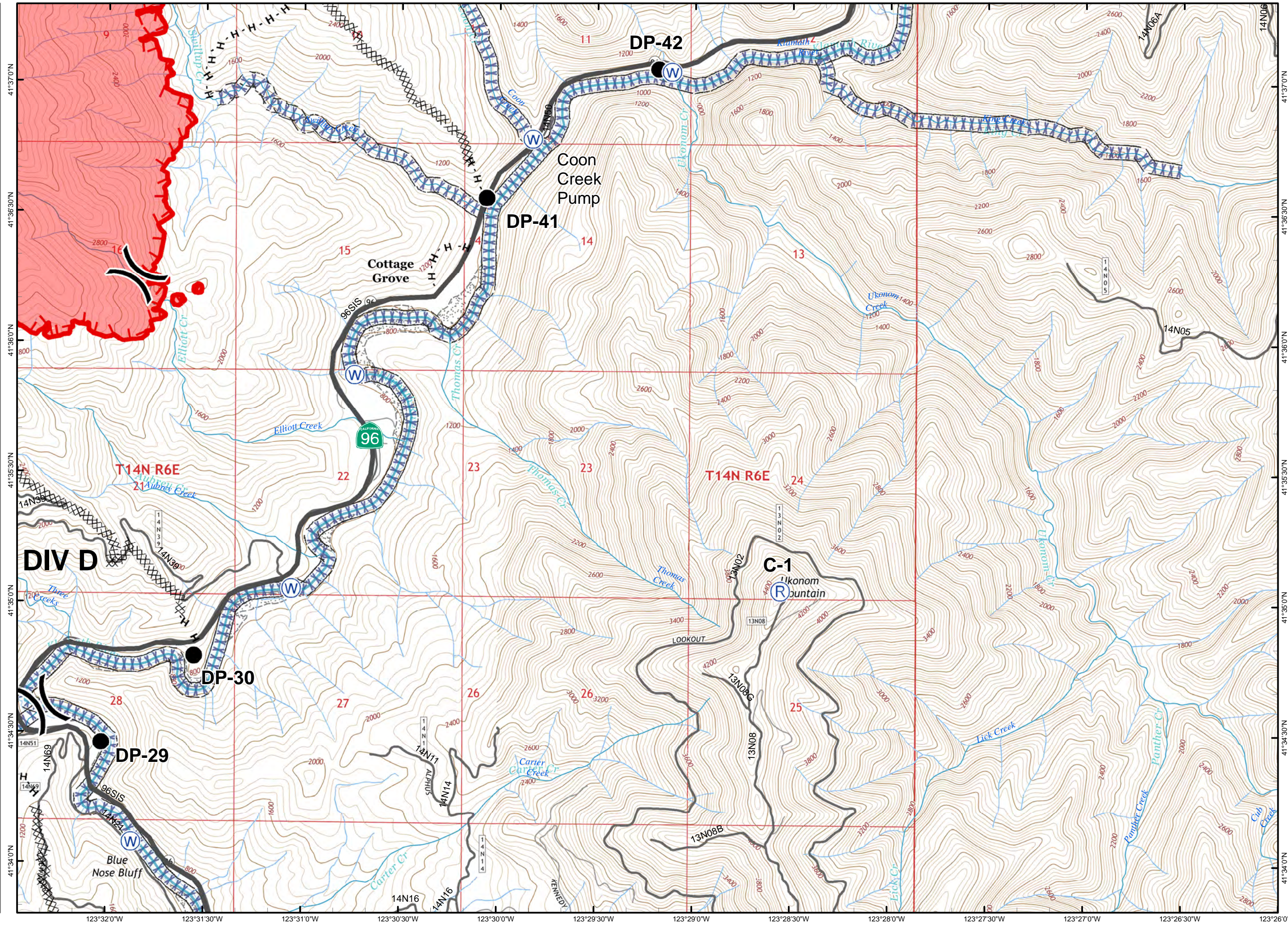
PONY INCIDENT
CA-KNF-004500
JUNE 16, 2016

PAGE 7 OF 10

- DROP POINT
- Ⓡ REPEATER
- Ⓜ WATER SOURCE
- ▬ UNCONTROLLED FIRE EDGE
- XXXX COMPLETED DOZER LINE
- H · H HAND LINE
- () DIVISION BREAK
- Minor Streams
- Major Streams
- Rivers
- XXXX SCREEN ONLY DRAFTING



0 0.5
MILES
NAD 83

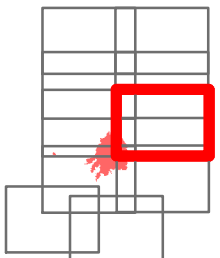


IAP MAP

PONY INCIDENT
 CA-KNF-004500
 JUNE 16, 2016

PAGE 8 OF 10

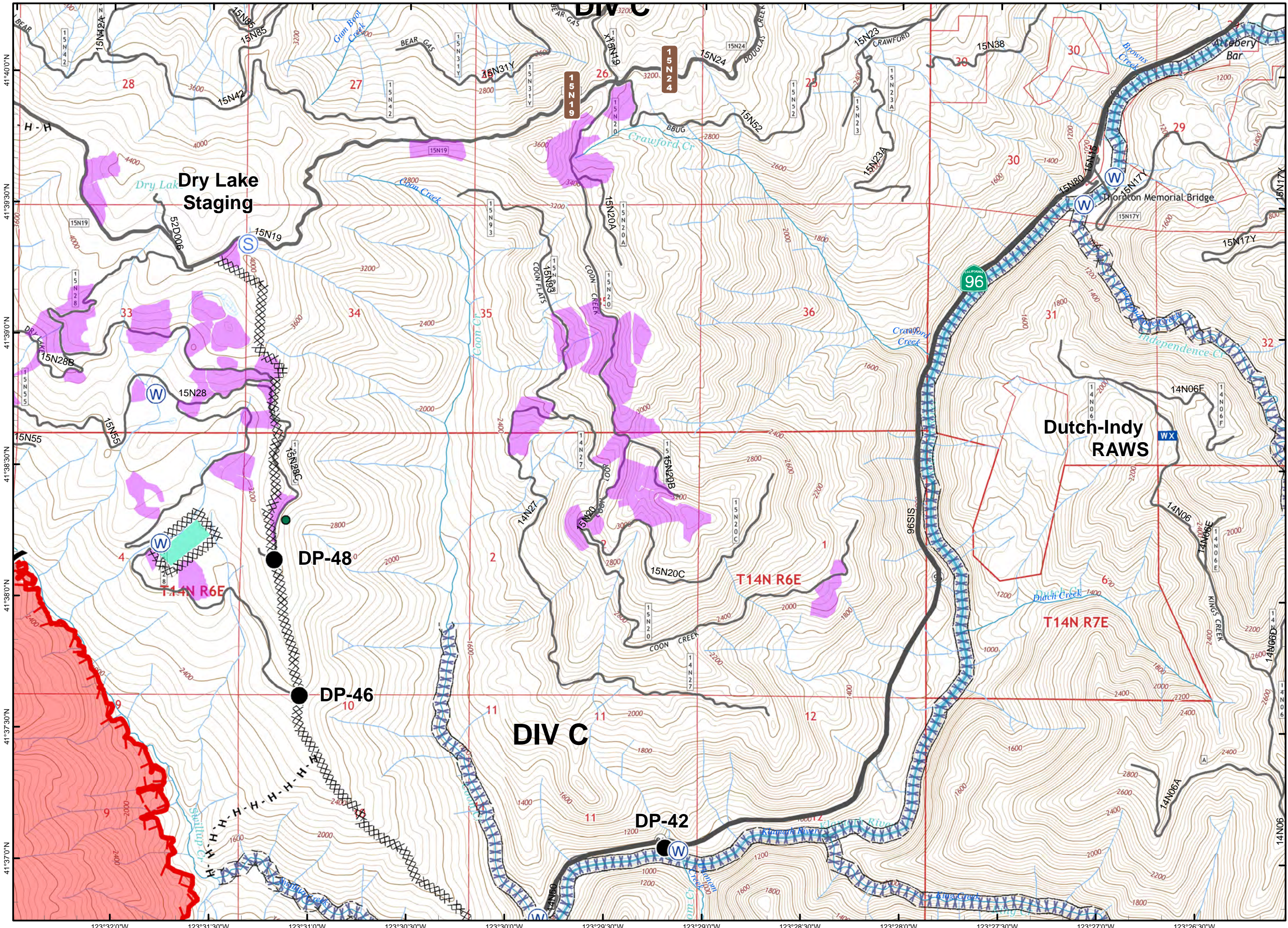
-  DROP POINT
-  MOBILE WEATHER UNIT
-  STAGING AREA
-  WATER SOURCE
-  UNCONTROLLED FIRE EDGE
-  COMPLETED DOZER LINE
-  HAND LINE
-  DIVISION BREAK
-  SPOTTED OWL SITE
-  PROGENY SITE
-  CRAWFORD PROJECT UNIT
-  Minor Streams
-  Major Streams
-  Rivers
-  SCREEN ONLY DRAFTING



0 0.5

MILES





NAD 83

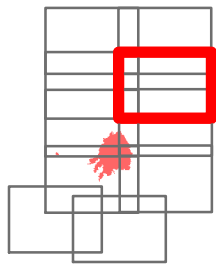


IAP MAP

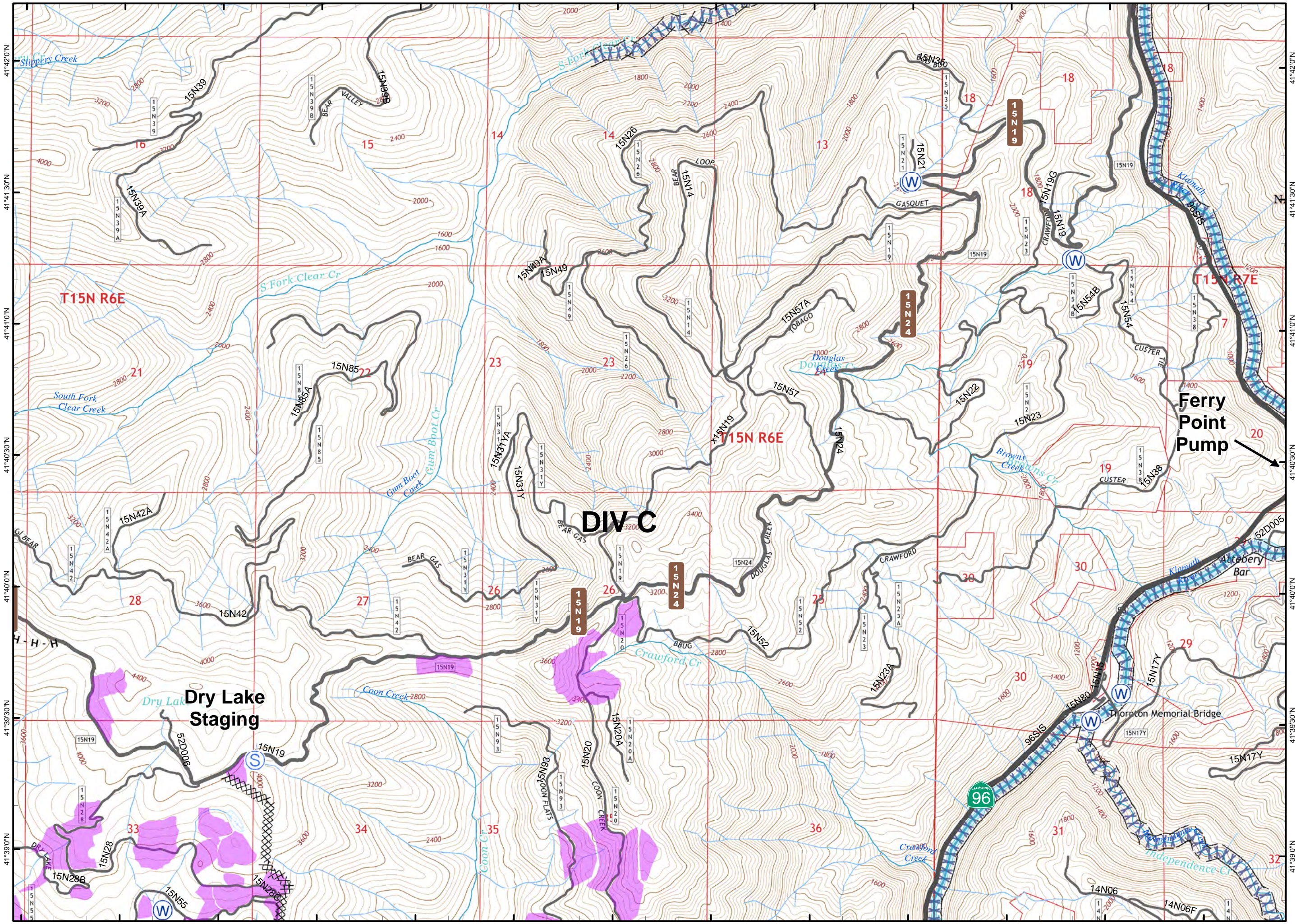
PONY INCIDENT
CA-KNF-004500
JUNE 16, 2016

PAGE 9 OF 10

-  STAGING AREA
-  WATER SOURCE
-  COMPLETED DOZER LINE
-  HAND LINE
-  DIVISION BREAK
-  CRAWFORD PROJECT UNIT
-  Minor Streams
-  Major Streams
-  Rivers
-  SCREEN ONLY DRAFTING











0 0.5
MILES
NAD 83

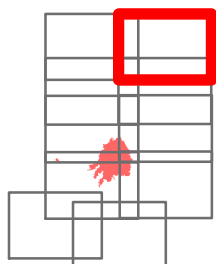


IAP MAP

PONY INCIDENT
CA-KNF-004500
JUNE 16, 2016

PAGE 10 OF 10

-  STAGING AREA
-  WATER SOURCE
-  DIVISION BREAK
-  Minor Streams
-  Major Streams
-  Rivers
-  SCREEN ONLY DRAFTING
-  WILDERNESS AREA



0 0.5

MILES

NAD 83

