

IAP MAP

PONY INCIDENT
CA-KNF-004500
JUNE 18, 2016

2,823 ACRES
AS OF 20:30
06/17/16

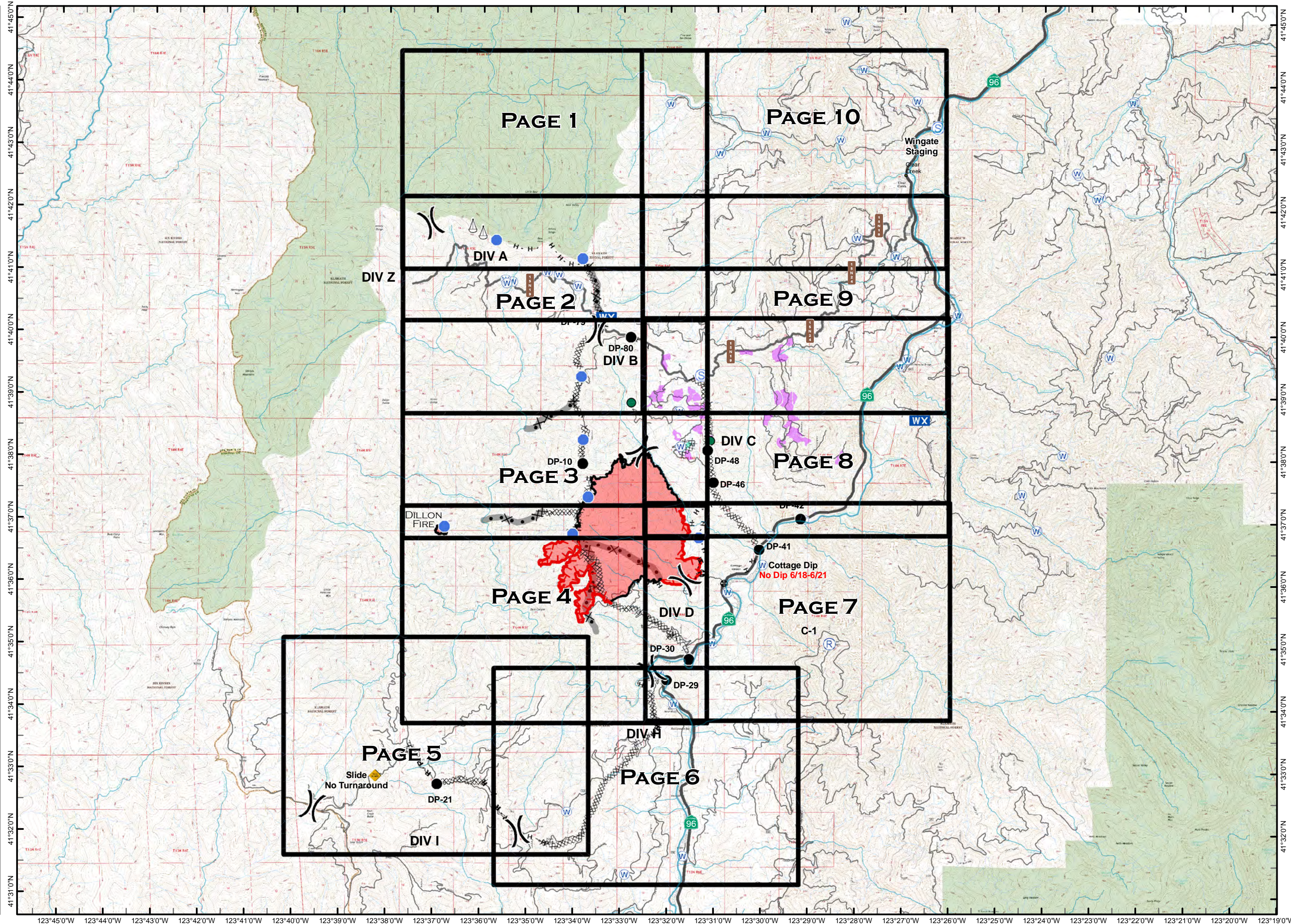
- Minor Streams
- Major Streams
- Rivers
- Grid
- OTHER
- DROP POINT
- HELISPOT
- MOBILE WEATHER UNIT
- REPEATER
- SLING SITE
- STAGING AREA
- WATER SOURCE
- UNCONTROLLED FIRE EDGE
- COMPLETED DOZER LINE
- COMPLETED LINE
- H - H - HAND LINE
- R - R - ROAD AS COMPLETED LINE
- OTHER
- DIVISION BREAK
- SPOTTED OWL SITE
- PROGENY SITE
- CRAWFORD PROJECT UNIT
- HISTORICAL FIRELINE
- WILDERNESS AREA



0 1 2

MILES







NAD 83

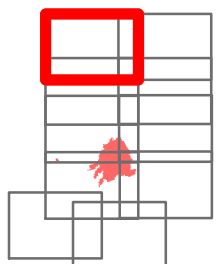


IAP MAP

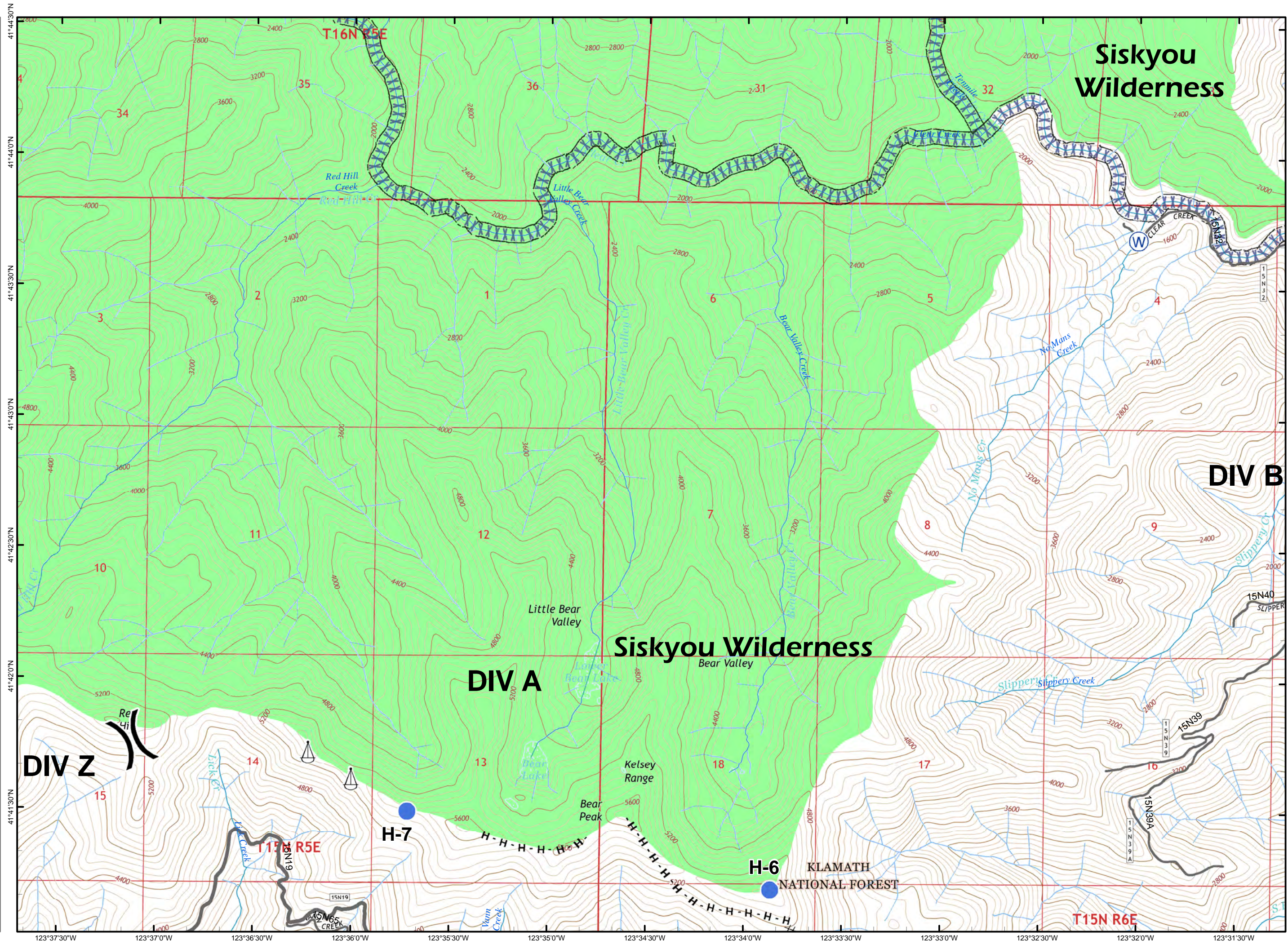
PONY INCIDENT
CA-KNF-004500
JUNE 18, 2016

PAGE 1 OF 10

-  HELISPOT
-  SLING SITE
-  WATER SOURCE
-  COMPLETED DOZER LINE
-  HAND LINE
-  DIVISION BREAK
-  Minor Streams
-  Major Streams
-  SCREEN ONLY DRAFTING
-  WILDERNESS AREA



0 0.5
MILES
NAD 83



Siskyou Wilderness

DIV A

DIV B

DIV Z

Siskyou Wilderness

KLAMATH NATIONAL FOREST

T16N R5E

T15N R6E

H-7

H-6

15

Re

14

13

18

17

10

11

12

7

8

9

3

2

1

6

5

4

35

36

31

32

34

2400

4000

4800

5200

4400

2400

3200

4000

4800

2800

3600

4400

5200

2000

2800

3600

4400

2400

3200

4000

4800

2800

3600

4400

5200

2000

2800

3600

4400

2400

3200

4000

4800

2800

3600

4400

5200

3000

4000

5000

6000

2000

2800

3600

4400

2400

3200

4000

4800

2000

2800

3600

4400

41°44'30"N
41°44'0"N
41°43'30"N
41°43'0"N
41°42'30"N
41°42'0"N
41°41'30"N

41°44'30"W
41°44'0"W
41°43'30"W
41°43'0"W
41°42'30"W
41°42'0"W
41°41'30"W

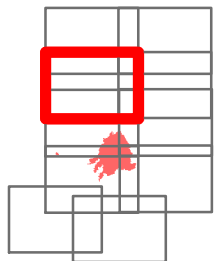
123°37'30"W 123°37'0"W 123°36'30"W 123°36'0"W 123°35'30"W 123°35'0"W 123°34'30"W 123°34'0"W 123°33'30"W 123°33'0"W 123°32'30"W 123°32'0"W 123°31'30"W

IAP MAP

PONY INCIDENT
CA-KNF-004500
JUNE 18, 2016

PAGE 2 OF 10

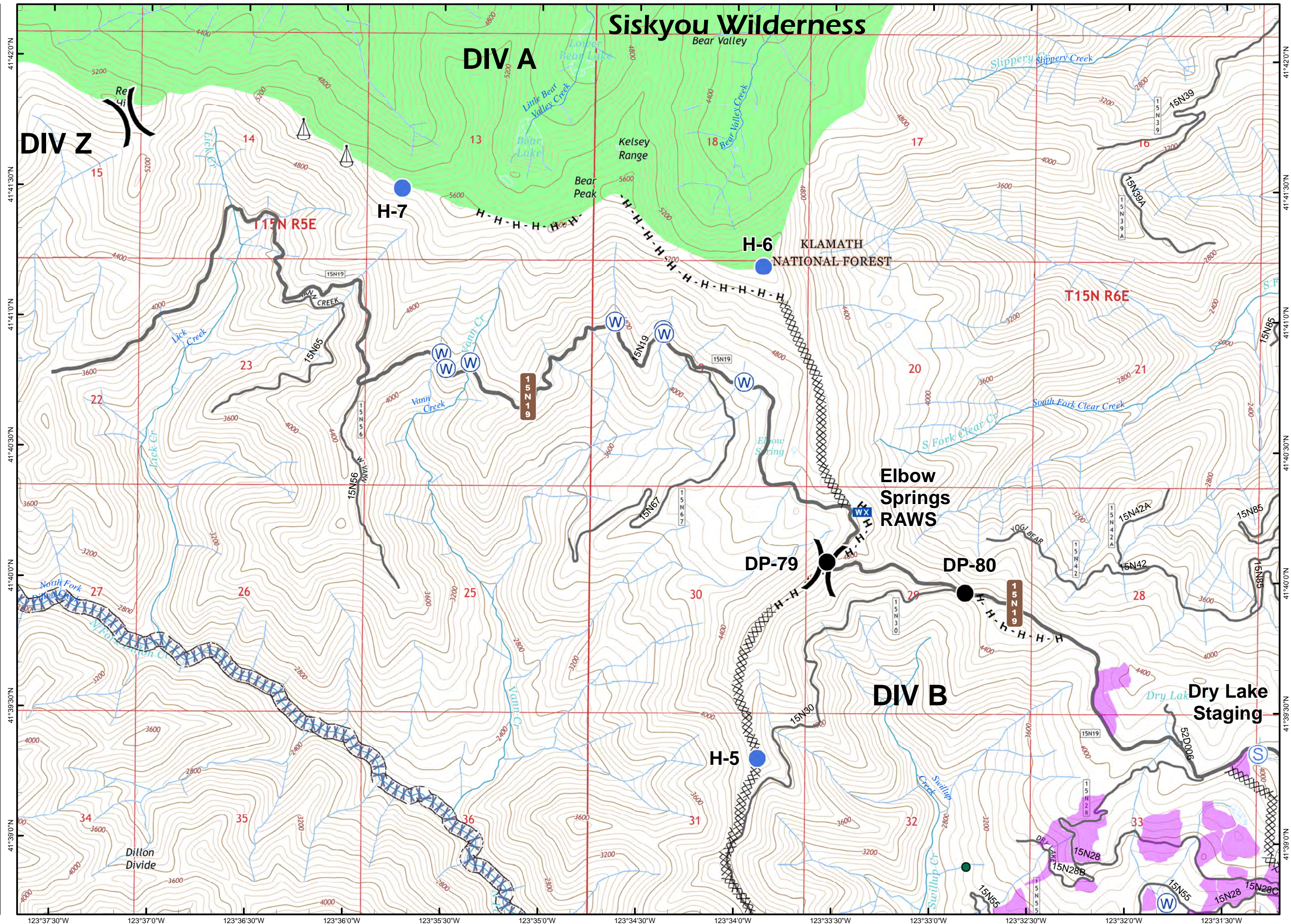
-  DROP POINT
-  HELISPOT
-  MOBILE WEATHER UNIT
-  SLING SITE
-  STAGING AREA
-  WATER SOURCE
-  COMPLETED DOZER LINE
-  HAND LINE
-  DIVISION BREAK
-  SPOTTED OWL SITE
-  CRAWFORD PROJECT UNIT
-  Minor Streams
-  Major Streams
-  SCREEN ONLY DRAFTING
-  WILDERNESS AREA



0 0.5

MILES

NAD 83

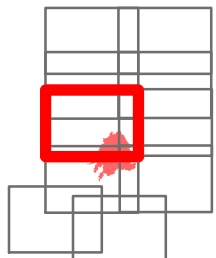


IAP MAP

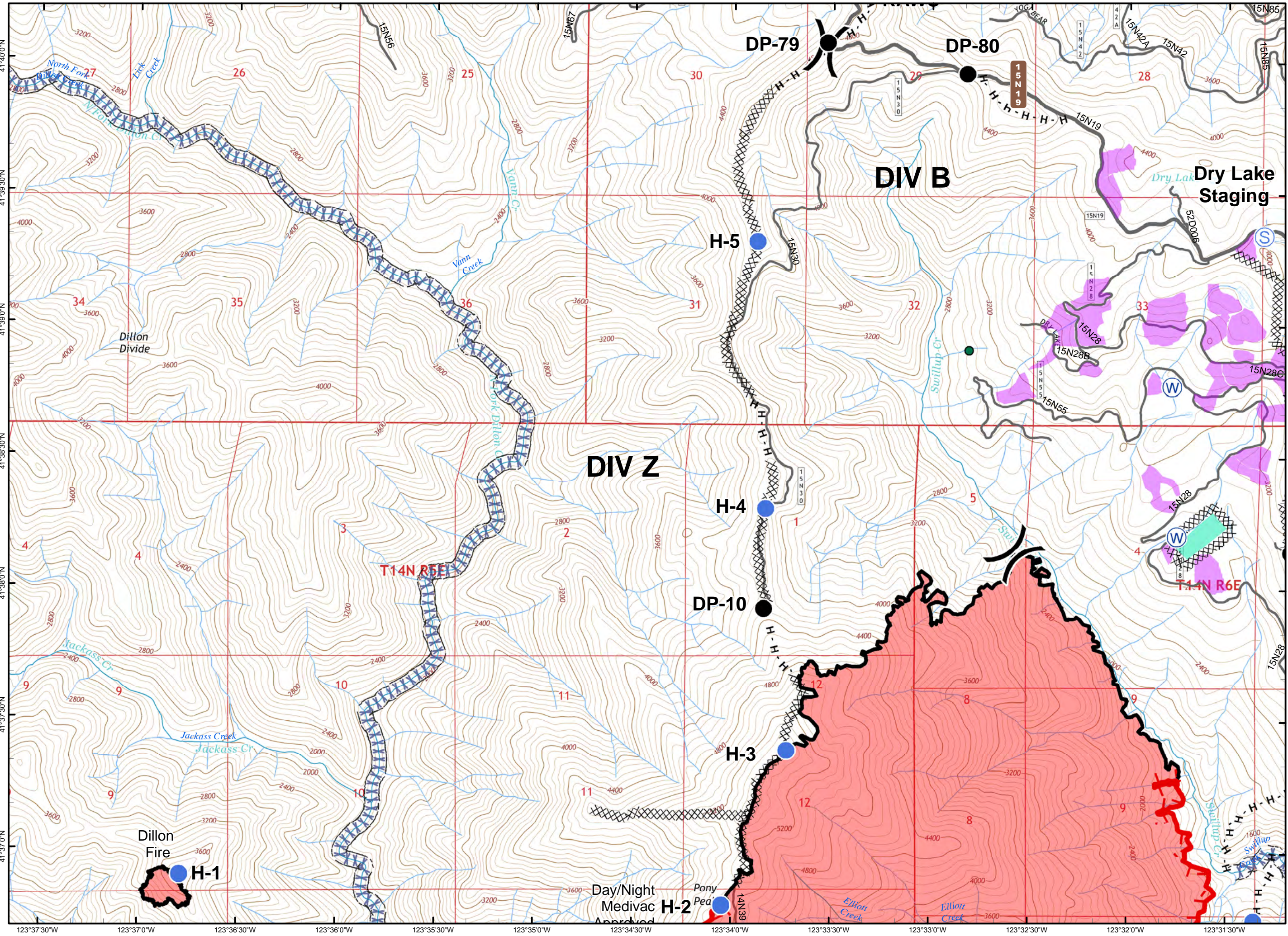
PONY INCIDENT
CA-KNF-004500
JUNE 18, 2016

PAGE 3 OF 10

- DROP POINT
- HELISPOT
- STAGING AREA
- WATER SOURCE
- UNCONTROLLED FIRE EDGE
- XXXX COMPLETED DOZER LINE
- COMPLETED LINE
- H-H HAND LINE
-) DIVISION BREAK
- SPOTTED OWL SITE
- PROGENY SITE
- CRAWFORD PROJECT UNIT
- Minor Streams
- Major Streams
- XXXX SCREEN ONLY DRAFTING



0 0.5
MILES
NAD 83

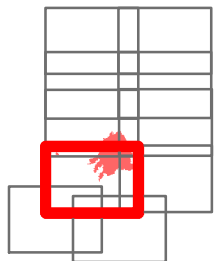


IAP MAP

PONY INCIDENT
CA-KNF-004500
JUNE 18, 2016

PAGE 4 OF 10

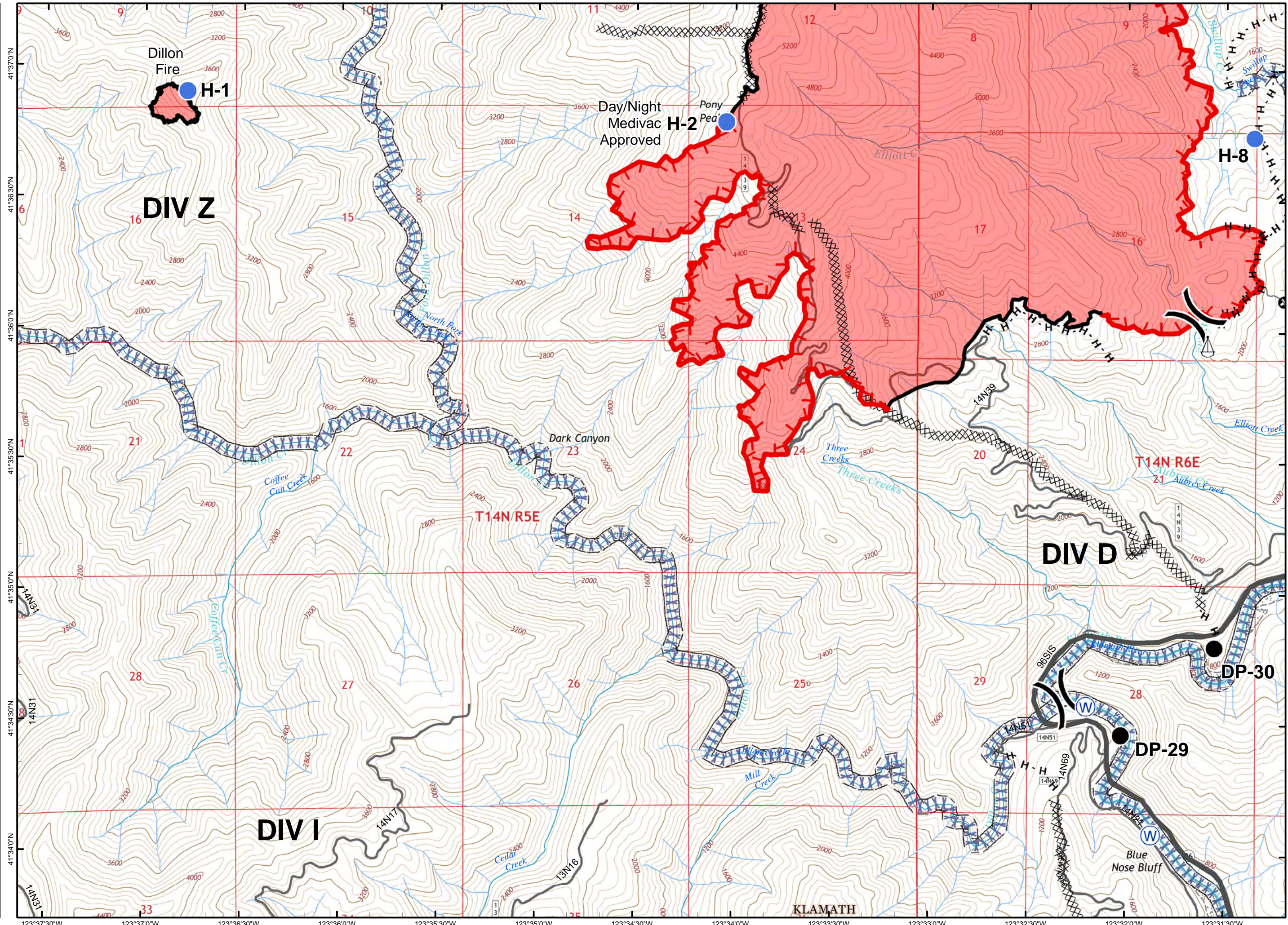
- DROP POINT
- HELISPOT
- ⚓ SLING SITE
- Ⓜ WATER SOURCE
- ▬ UNCONTROLLED FIRE EDGE
- XXXX COMPLETED DOZER LINE
- ▬ COMPLETED LINE
- H · H HAND LINE
- ⊕ OTHER
-) DIVISION BREAK
- Minor Streams
- Major Streams
- Rivers
- XXXX SCREEN ONLY DRAFTING



0 0.5

MILES

NAD 83





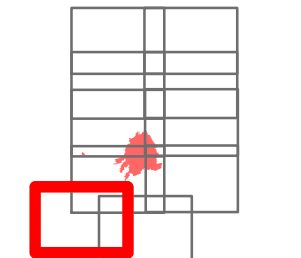
KLAMATH

IAP MAP

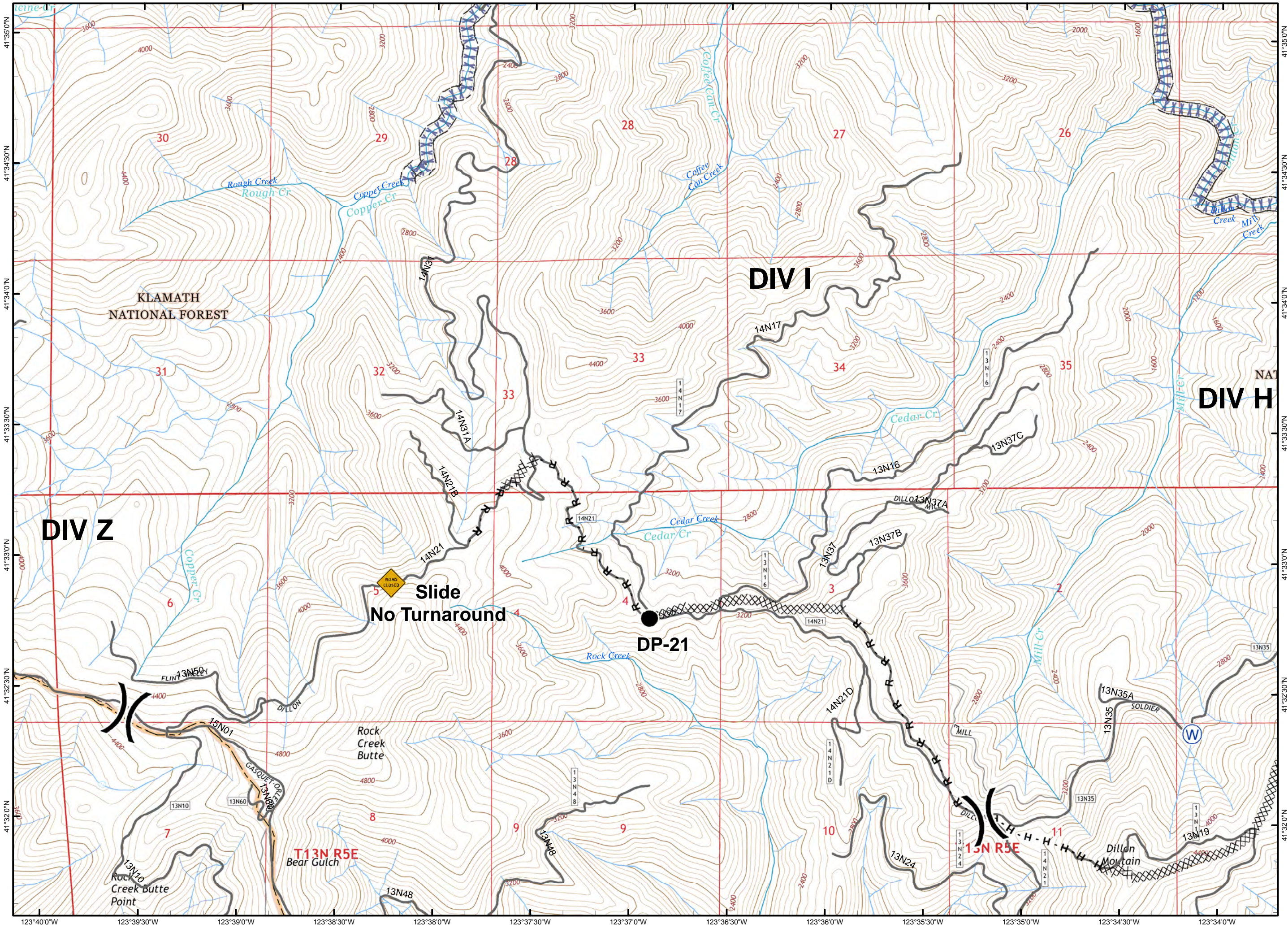
PONY INCIDENT
CA-KNF-004500
JUNE 18, 2016

PAGE 5 OF 10

-  ROAD CLOSED
-  DROP POINT
-  WATER SOURCE
-  COMPLETED DOZER LINE
-  HAND LINE
-  ROAD AS COMPLETED LINE
-  DIVISION BREAK
-  Minor Streams
-  Major Streams
-  SCREEN ONLY DRAFTING



0 0.5
MILES
NAD 83

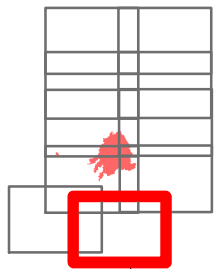


IAP MAP

PONY INCIDENT
CA-KNF-004500
JUNE 18, 2016

PAGE 6 OF 10

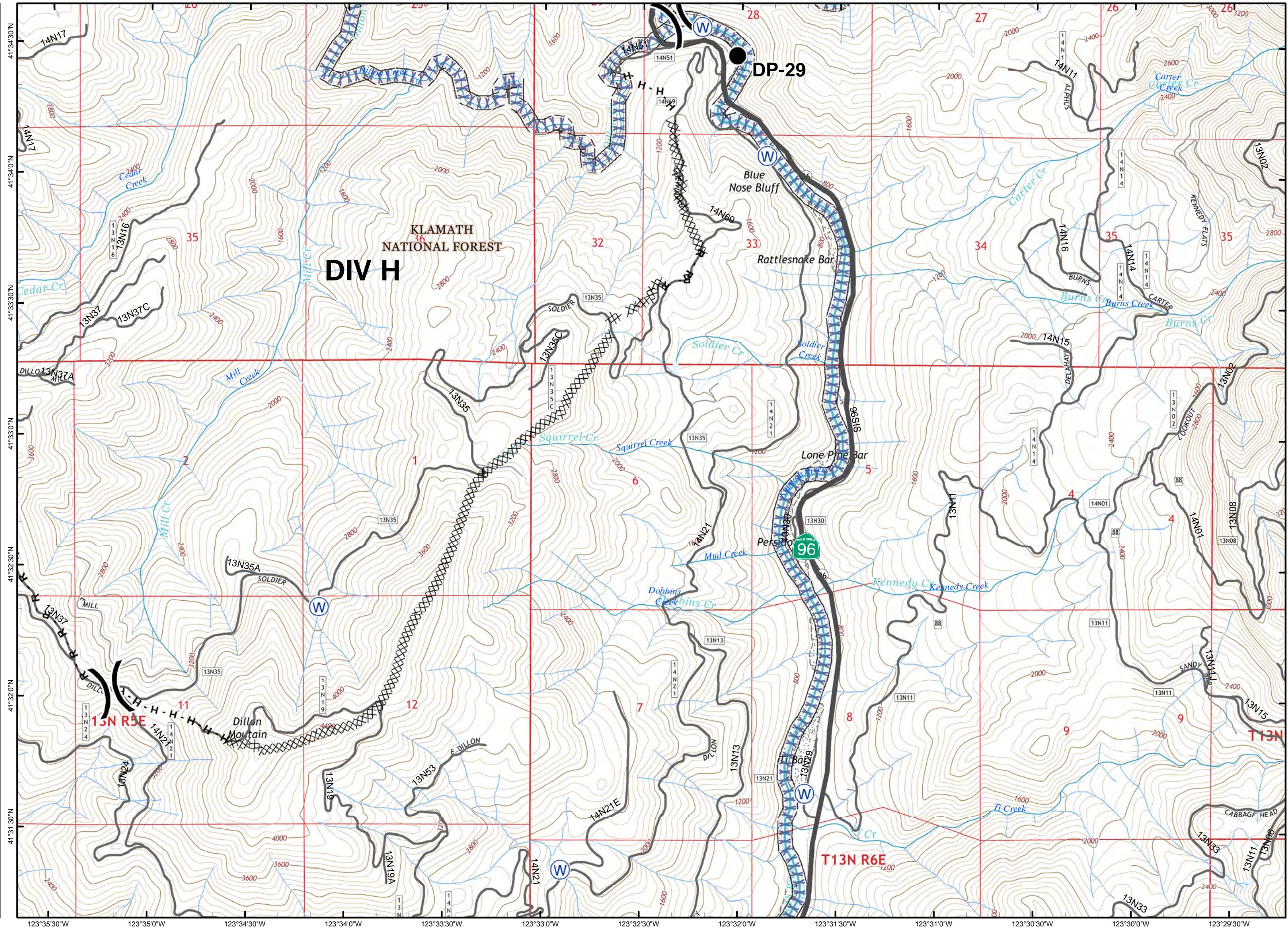
- DROP POINT
- ⊙ WATER SOURCE
- XXXX COMPLETED DOZER LINE
- H · H HAND LINE
- R · R ROAD AS COMPLETED LINE
-) DIVISION BREAK
- Minor Streams
- Major Streams
- Rivers
- XXXXX SCREEN ONLY DRAFTING



0 0.5

MILES









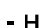






NAD 83

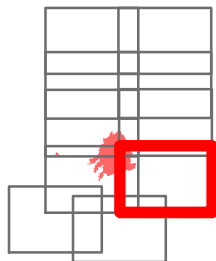


IAP MAP

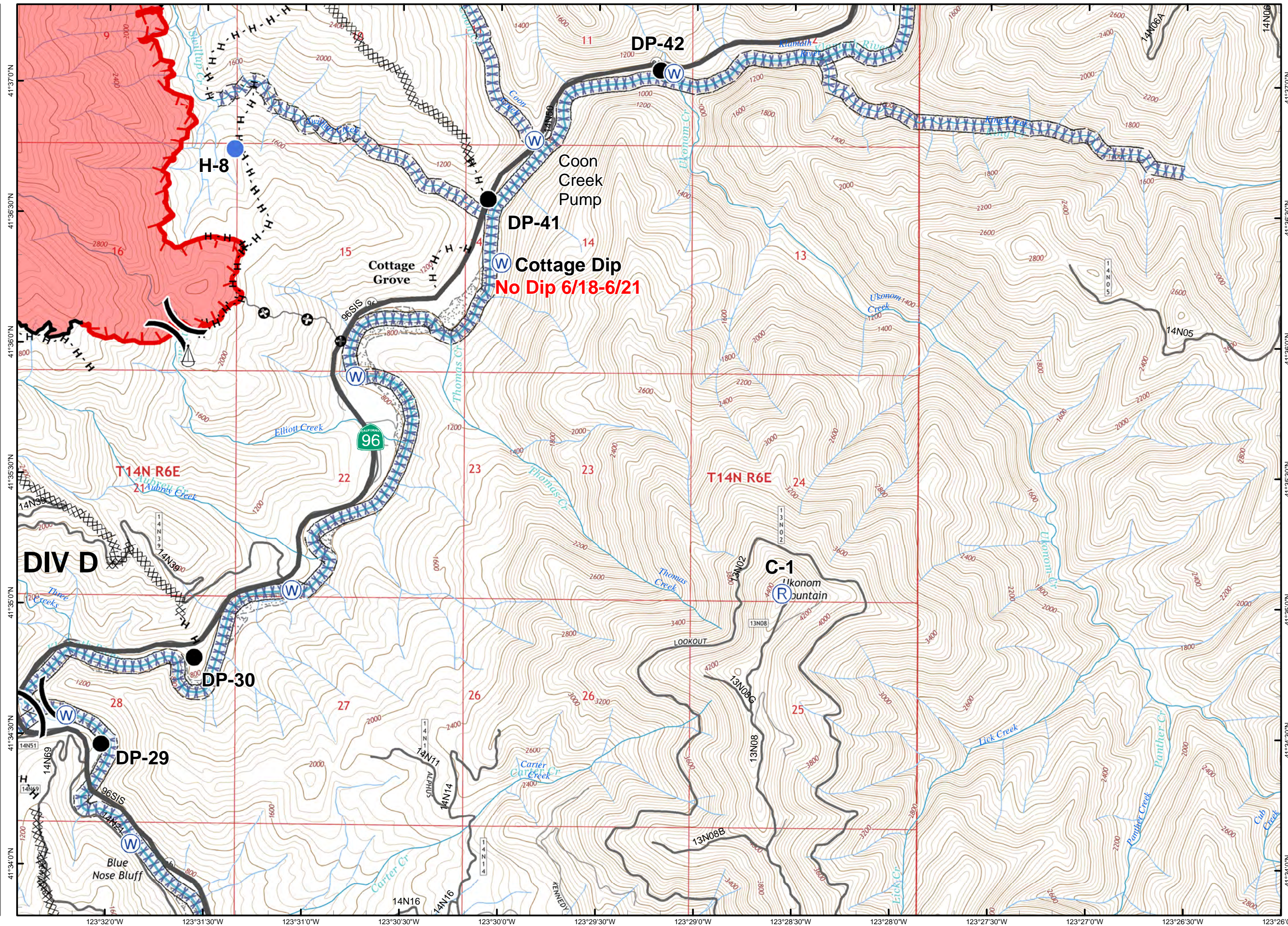
PONY INCIDENT
CA-KNF-004500
JUNE 18, 2016

PAGE 7 OF 10

-  DROP POINT
-  HELISPOT
-  REPEATER
-  SLING SITE
-  WATER SOURCE
-  UNCONTROLLED FIRE EDGE
-  COMPLETED DOZER LINE
-  COMPLETED LINE
-  HAND LINE
-  OTHER
-  DIVISION BREAK
-  Minor Streams
-  Major Streams
-  Rivers
-  SCREEN ONLY DRAFTING



0 0.5
MILES
NAD 83

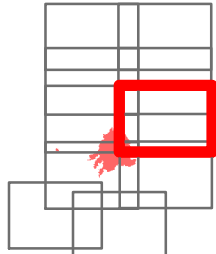


IAP MAP

PONY INCIDENT
CA-KNF-004500
JUNE 18, 2016

PAGE 8 OF 10

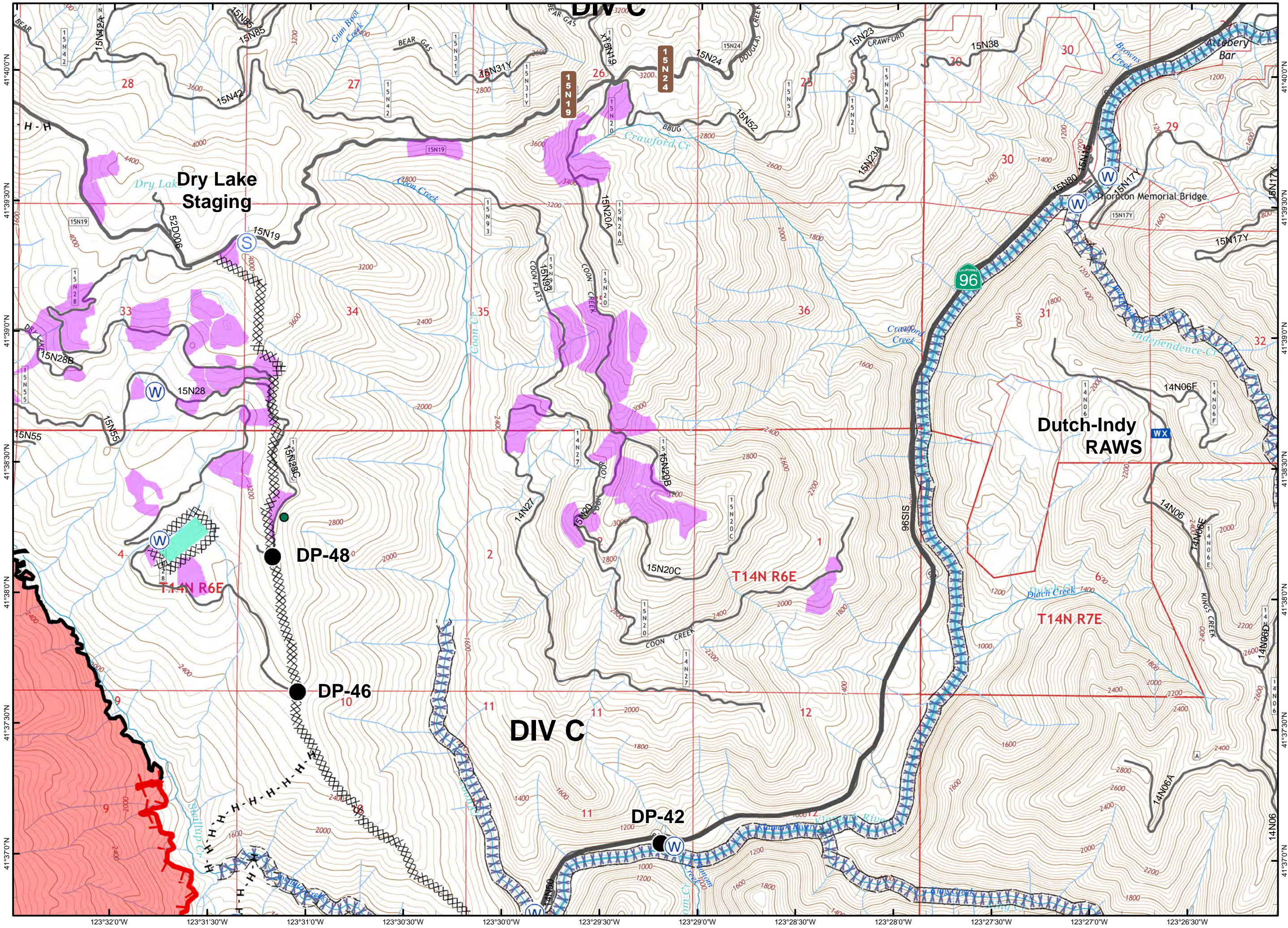
-  DROP POINT
-  HELISPOT
-  MOBILE WEATHER UNIT
-  STAGING AREA
-  WATER SOURCE
-  UNCONTROLLED FIRE EDGE
-  COMPLETED DOZER LINE
-  COMPLETED LINE
-  HAND LINE
-  DIVISION BREAK
-  SPOTTED OWL SITE
-  PROGENY SITE
-  CRAWFORD PROJECT UNIT
-  Minor Streams
-  Major Streams
-  Rivers
-  SCREEN ONLY DRAFTING



0 0.5

MILES

NAD 83

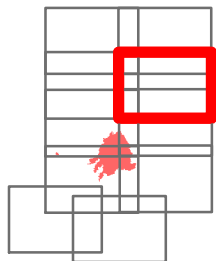


IAP MAP

PONY INCIDENT
CA-KNF-004500
JUNE 18, 2016

PAGE 9 OF 10

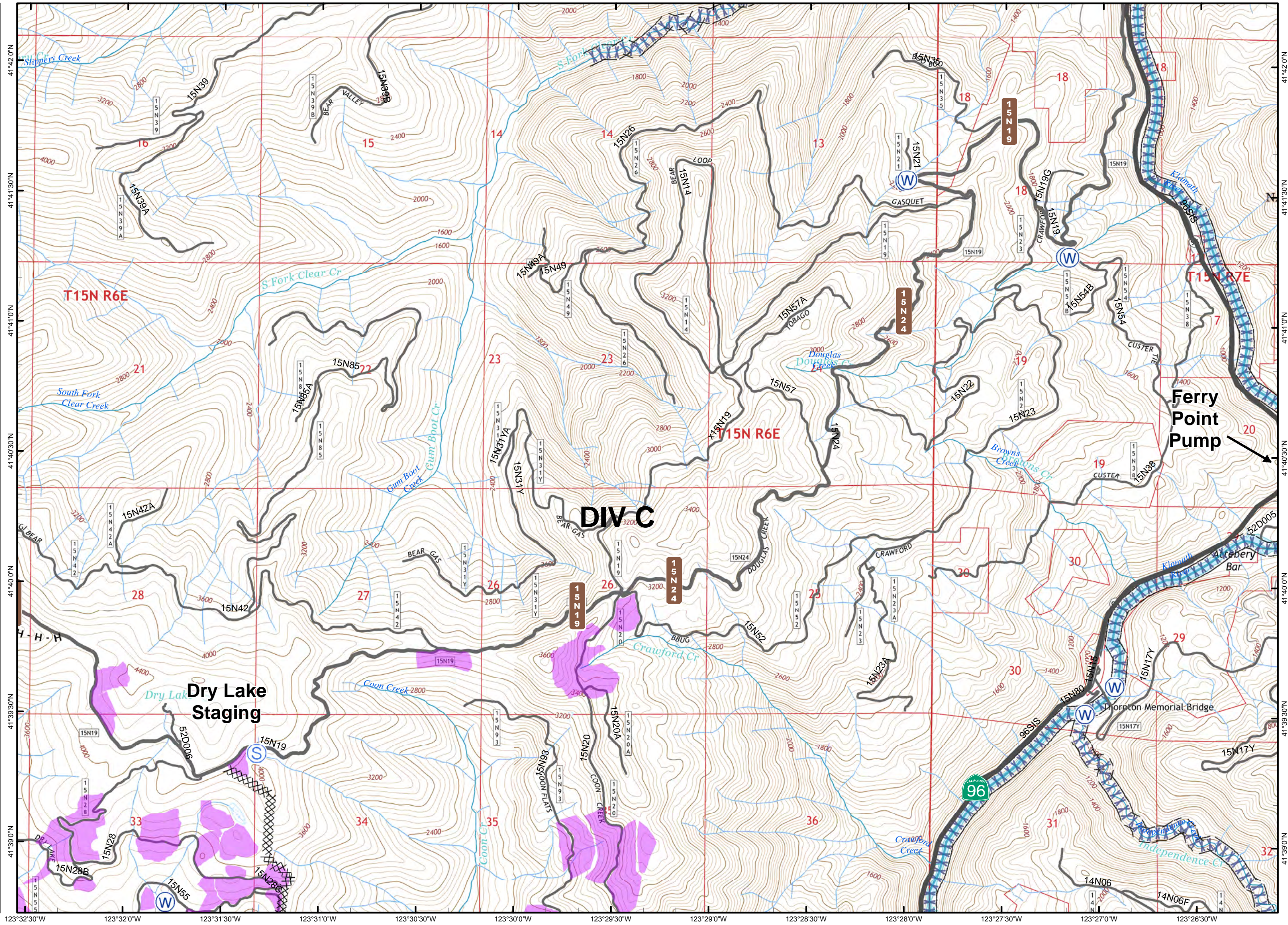
-  STAGING AREA
-  WATER SOURCE
-  COMPLETED DOZER LINE
-  HAND LINE
-  DIVISION BREAK
-  CRAWFORD PROJECT UNIT
-  Minor Streams
-  Major Streams
-  Rivers
-  SCREEN ONLY DRAFTING



0 0.5

MILES

NAD 83

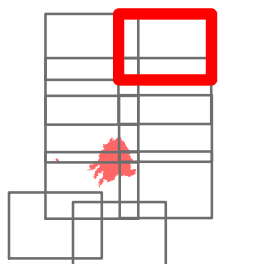


IAP MAP

PONY INCIDENT
CA-KNF-004500
JUNE 18, 2016

PAGE 10 OF 10

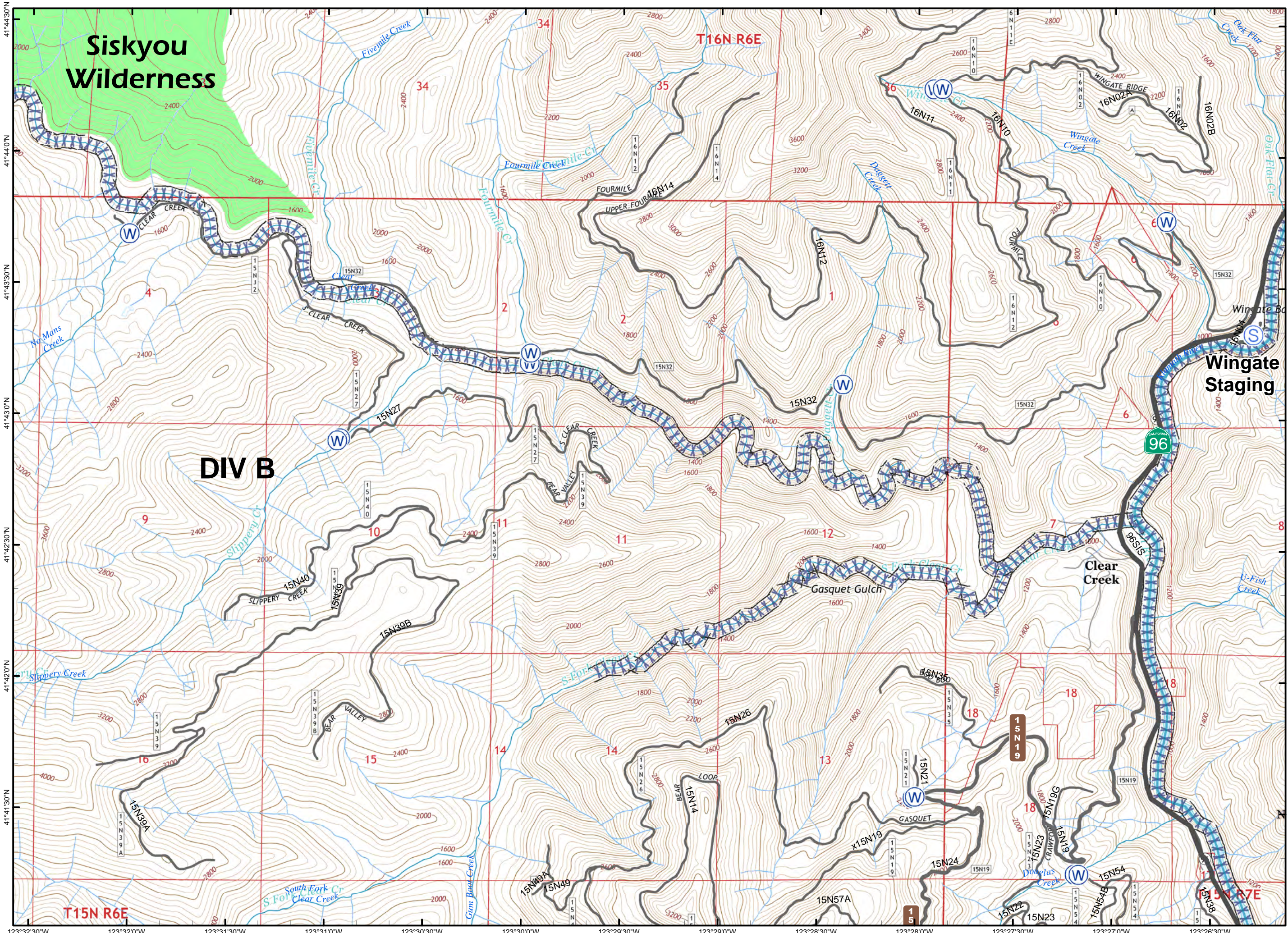
-  STAGING AREA
-  WATER SOURCE
-  DIVISION BREAK
-  Minor Streams
-  Major Streams
-  Rivers
-  SCREEN ONLY DRAFTING
-  WILDERNESS AREA



0 0.5

MILES

NAD 83



Siskyou Wilderness

DIV B

Wingate Staging

Clear Creek

Gasquet Gulch

123°32'30"W 123°32'0"W 123°31'30"W 123°31'0"W 123°30'30"W 123°30'0"W 123°29'30"W 123°29'0"W 123°28'30"W 123°28'0"W 123°27'30"W 123°27'0"W 123°26'30"W

41°44'30"N
41°44'0"N
41°43'30"N
41°43'0"N
41°42'30"N
41°42'0"N
41°41'30"N

41°44'30"N
41°44'0"N
41°43'30"N
41°43'0"N
41°42'30"N
41°42'0"N
41°41'30"N