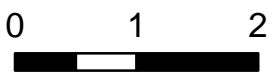


IAP MAP

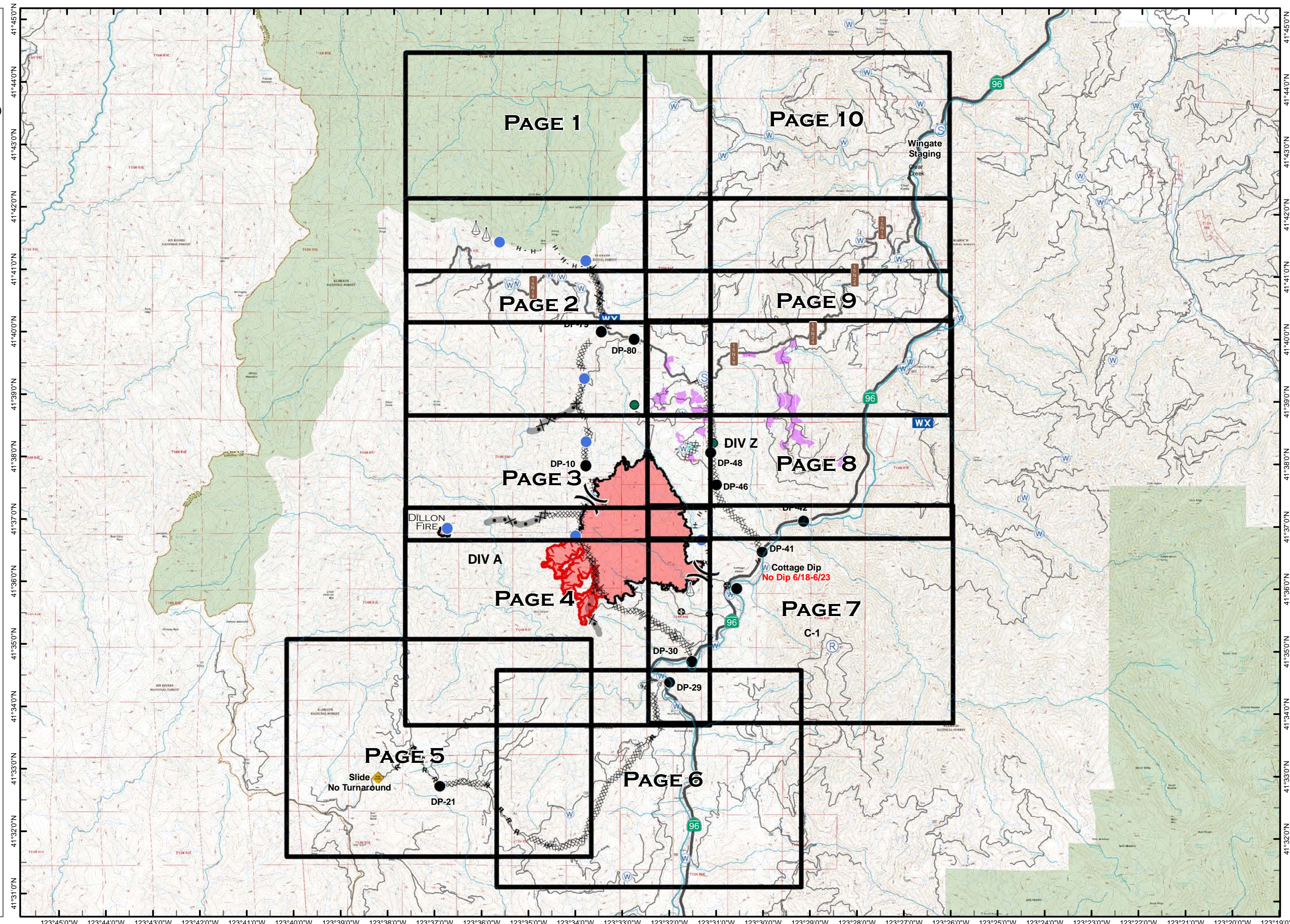
PONY INCIDENT
CA-KNF-004500
JUNE 23, 2016

2,858 ACRES
AS OF 22:07
06/20/16

- Minor Streams
- Major Streams
- Rivers
- Grid
- OTHER
- DROP POINT
- HELISPOT
- MOBILE WEATHER UNIT
- REPEATER
- SLING SITE
- STAGING AREA
- WATER SOURCE
- UNCONTROLLED FIRE EDGE
- COMPLETED DOZER LINE
- COMPLETED LINE
- H · H · HAND LINE
- R · R · ROAD AS COMPLETED LINE
- OTHER
- DIVISION BREAK
- SPOTTED OWL SITE
- PROGENY SITE
- CRAWFORD PROJECT UNIT
- HISTORICAL FIRELINE
- WILDERNESS AREA







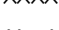





MILES
NAD 83

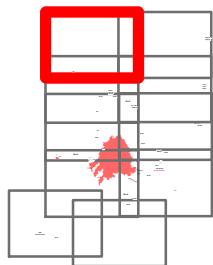


IAP MAP

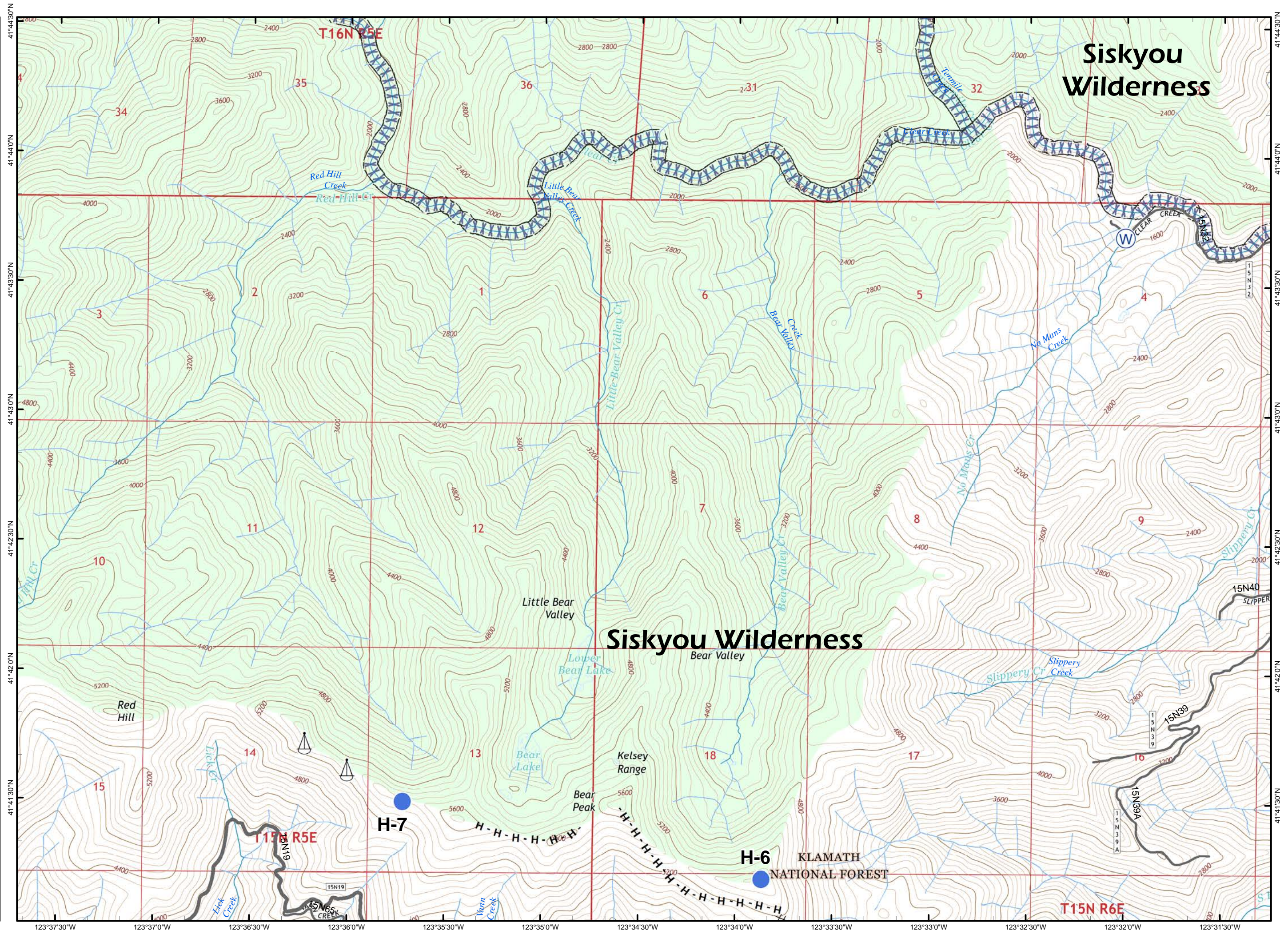
PONY INCIDENT
CA-KNF-004500
JUNE 23, 2016

PAGE 1 OF 10

-  Helispot
-  Sling Site
-  Water Source
-  Completed Dozer Line
-  Hand Line
-  Division Break
-  Minor Streams
-  Major Streams
-  Screen Only Drafting
-  Wilderness Area



MILES
NAD 83

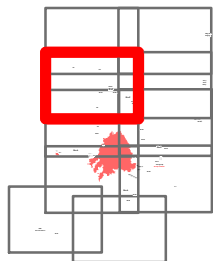


IAP MAP

PONY INCIDENT
CA-KNF-004500
JUNE 23, 2016

PAGE 2 OF 10

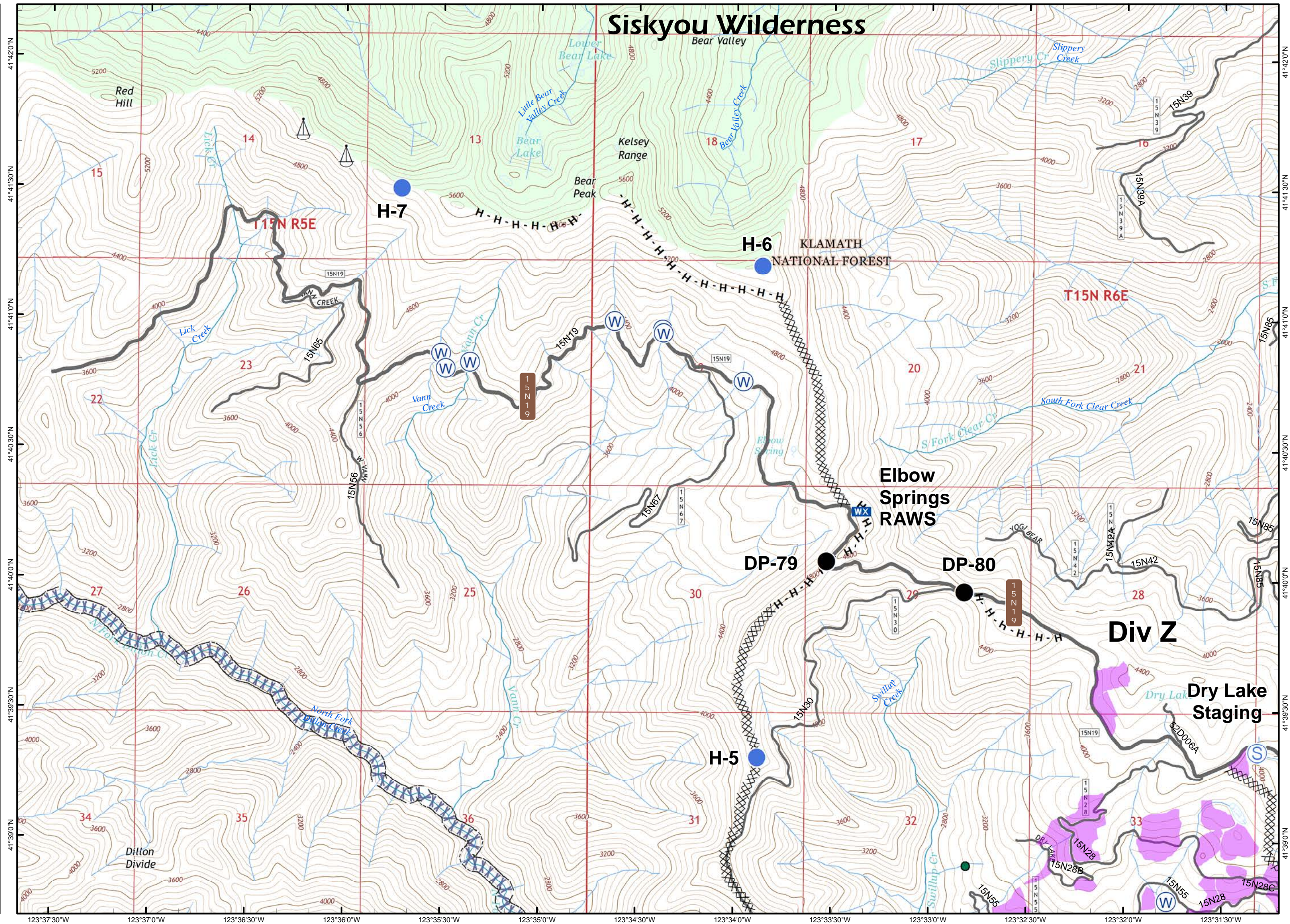
-  Drop Point
-  Helispot
-  Mobile Weather Unit
-  Sling Site
-  Staging Area
-  Water Source
-  Completed Dozer Line
-  Hand Line
-  Division Break
-  Spotted Owl Site
-  Crawford Project Unit
-  Minor Streams
-  Major Streams
-  Screen Only Drafting
-  Wilderness Area



0 0.5

MILES

NAD 83

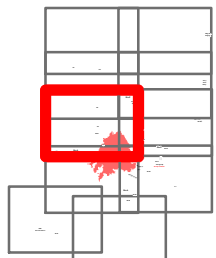


IAP MAP

PONY INCIDENT
CA-KNF-004500
JUNE 23, 2016

PAGE 3 OF 10

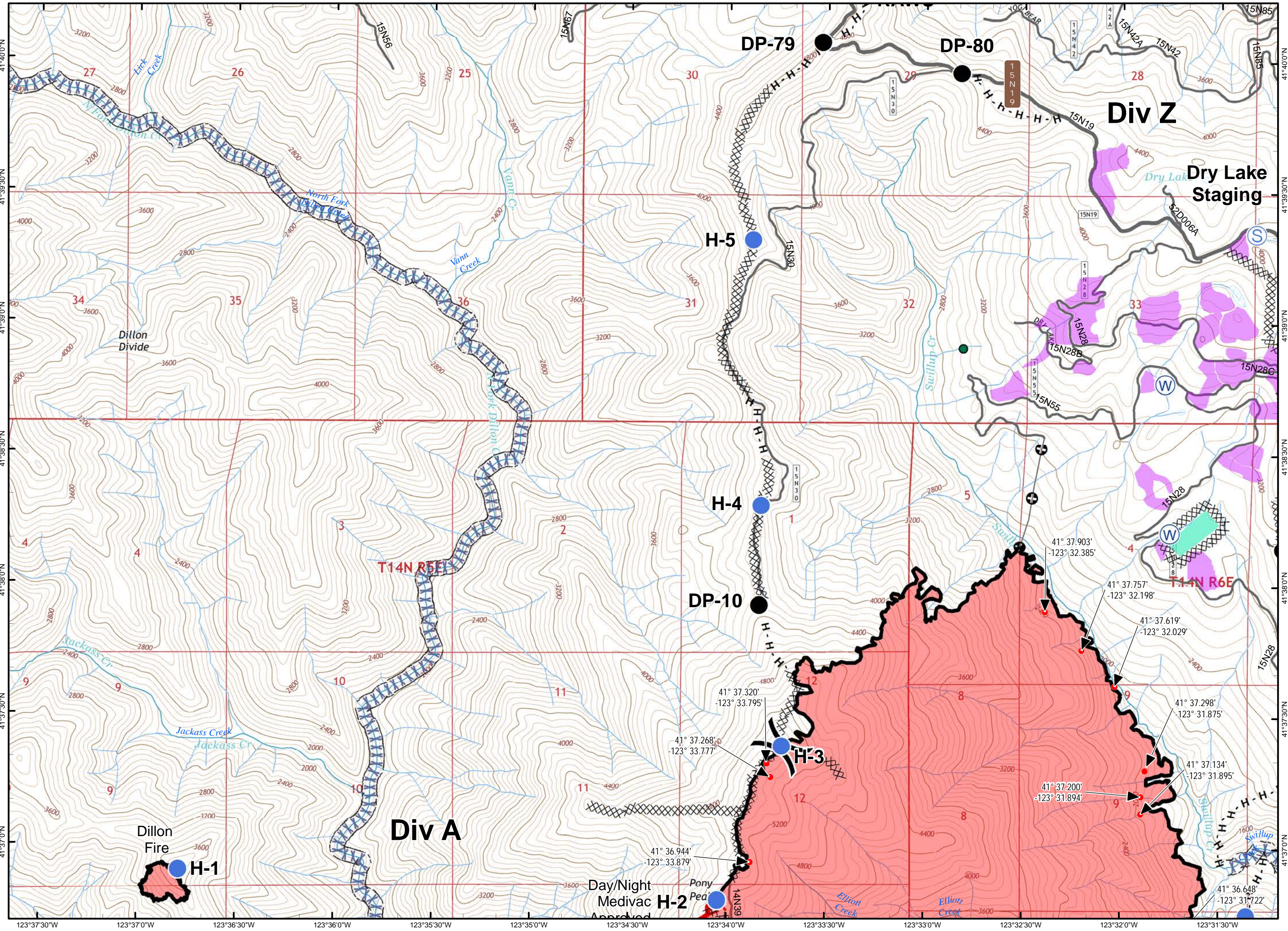
- Isolated Heat within 300' of Perimeter
- Drop Point
- Helispot
- Ⓢ Staging Area
- Ⓜ Water Source
- ▬ Uncontrolled Fire Edge
- XXXX Completed Dozer Line
- ▬ Completed Line
- H - H Hand Line
- ⊕ Personnel Line
-) (Division Break
- Spotted Owl Site
- Progeny Site
- Crawford Project Unit
- Minor Streams
- Major Streams
- XX Screen Only Drafting



0 0.5

MILES

NAD 83

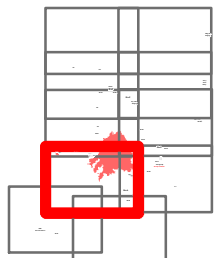


IAP MAP

PONY INCIDENT
CA-KNF-004500
JUNE 23, 2016

PAGE 4 OF 10

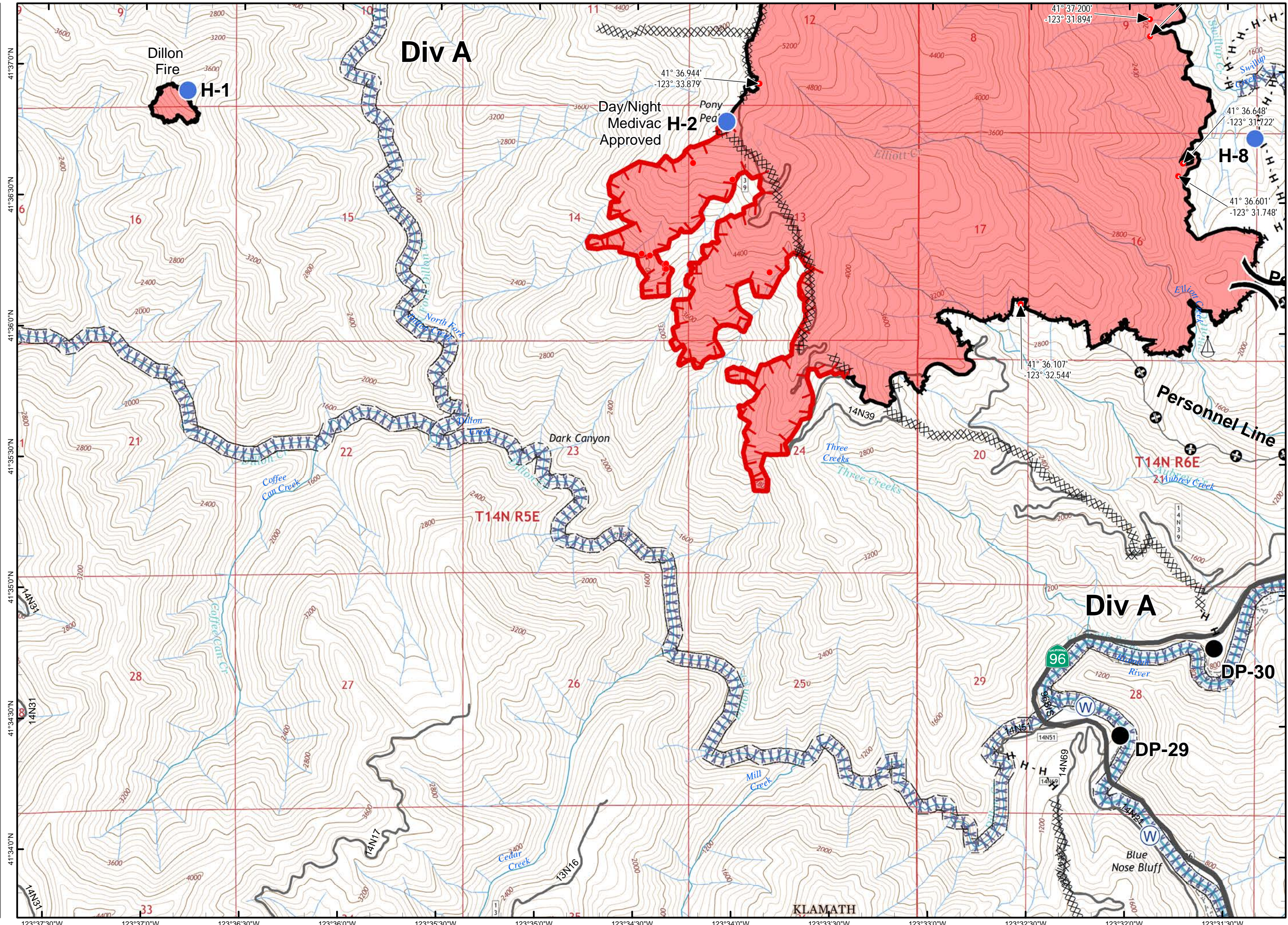
- Isolated Heat within 300' of Perimeter
- Drop Point
- Helispot
- ⚓ Sling Site
- Ⓜ Water Source
- ┌ Uncontrolled Fire Edge
- XXXX Completed Dozer Line
- Completed Line
- H - H Hand Line
- ⊕ Personnel Line
-) (Division Break
- Minor Streams
- Major Streams
- Rivers
- XX Screen Only Drafting



0 0.5

MILES





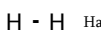
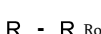
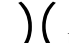
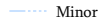
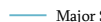

NAD 83

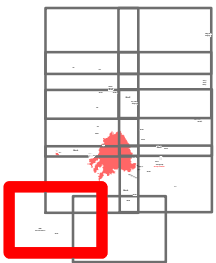


IAP MAP

PONY INCIDENT
CA-KNF-004500
JUNE 23, 2016

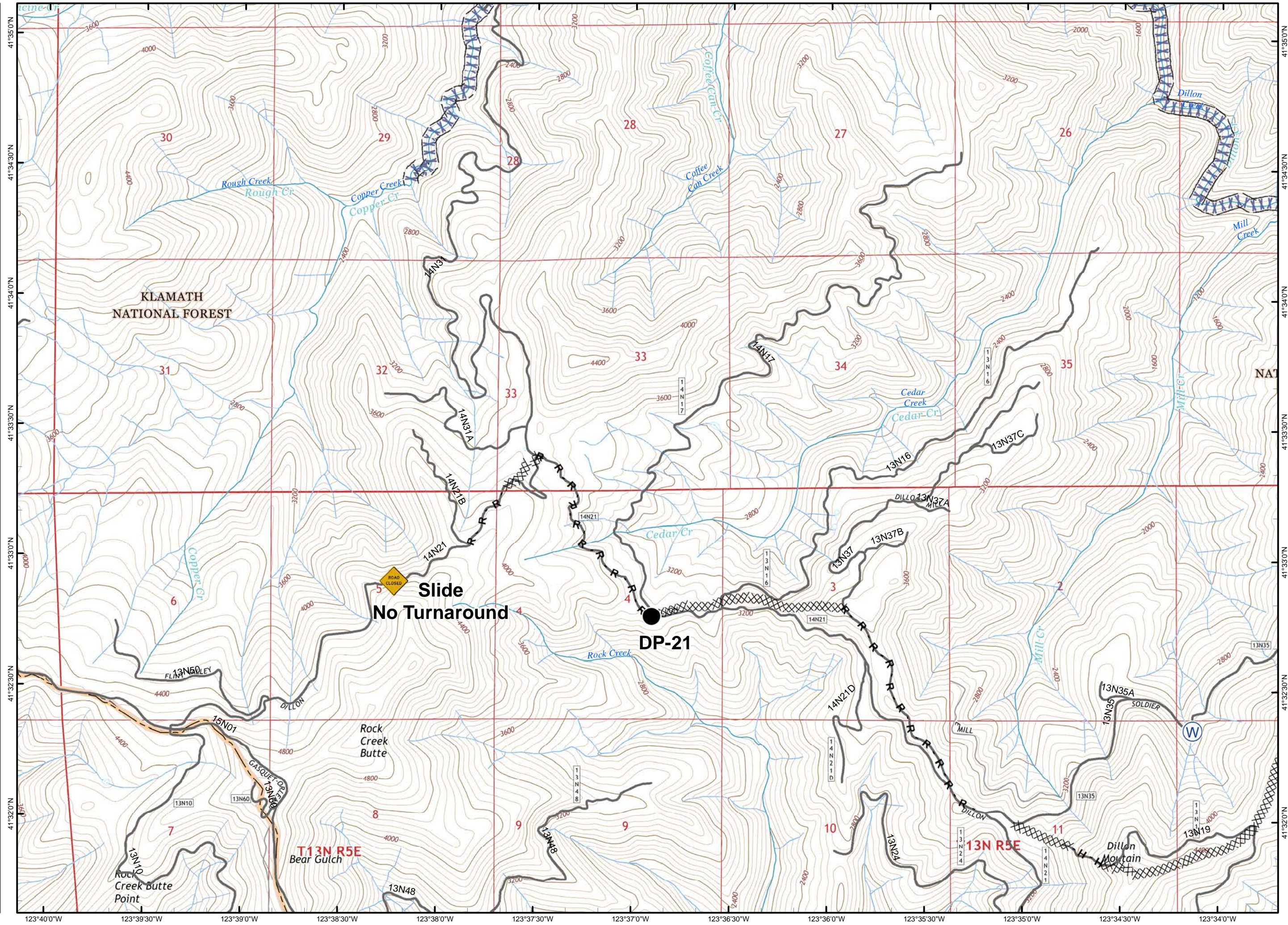
PAGE 5 OF 10

-  ROAD CLOSED Slide
-  Drop Point
-  Water Source
-  Completed Dozer Line
-  Hand Line
-  Road as Completed Line
-  Division Break
-  Minor Streams
-  Major Streams
-  Screen Only Drafting



0 0.5

MILES
NAD 83

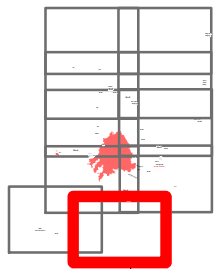


IAP MAP

PONY INCIDENT
CA-KNF-004500
JUNE 23, 2016

PAGE 6 OF 10

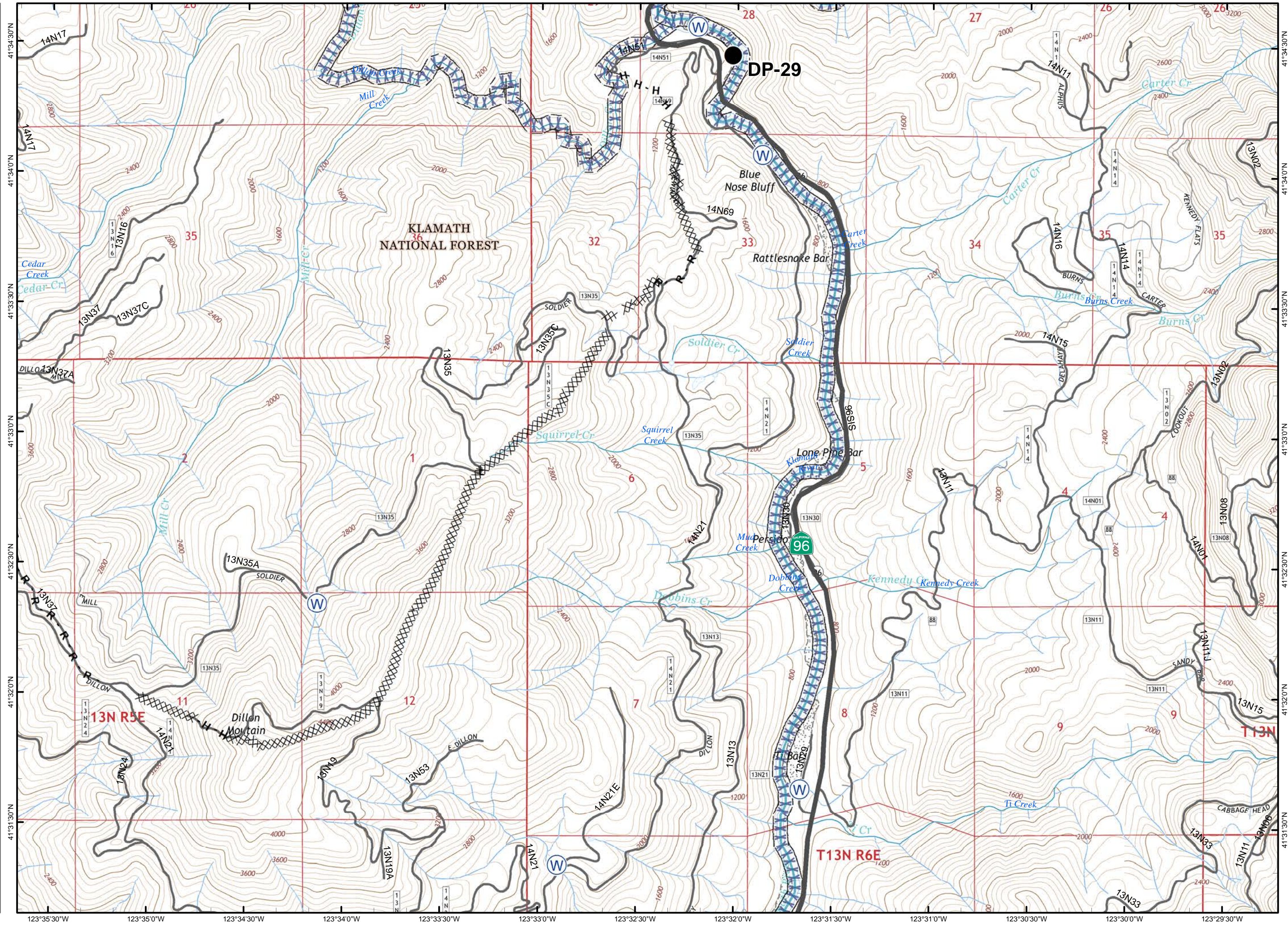
- Drop Point
- ⊙ Water Source
- XXXX Completed Dozer Line
- H - H Hand Line
- R - R Road as Completed Line
-) (Division Break
- Minor Streams
- Major Streams
- Rivers
- XX Screen Only Drafting



0 0.5

MILES

NAD 83

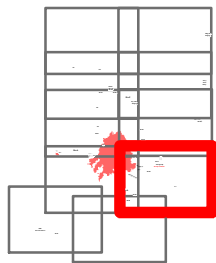


IAP MAP

PONY INCIDENT
CA-KNF-004500
JUNE 23, 2016

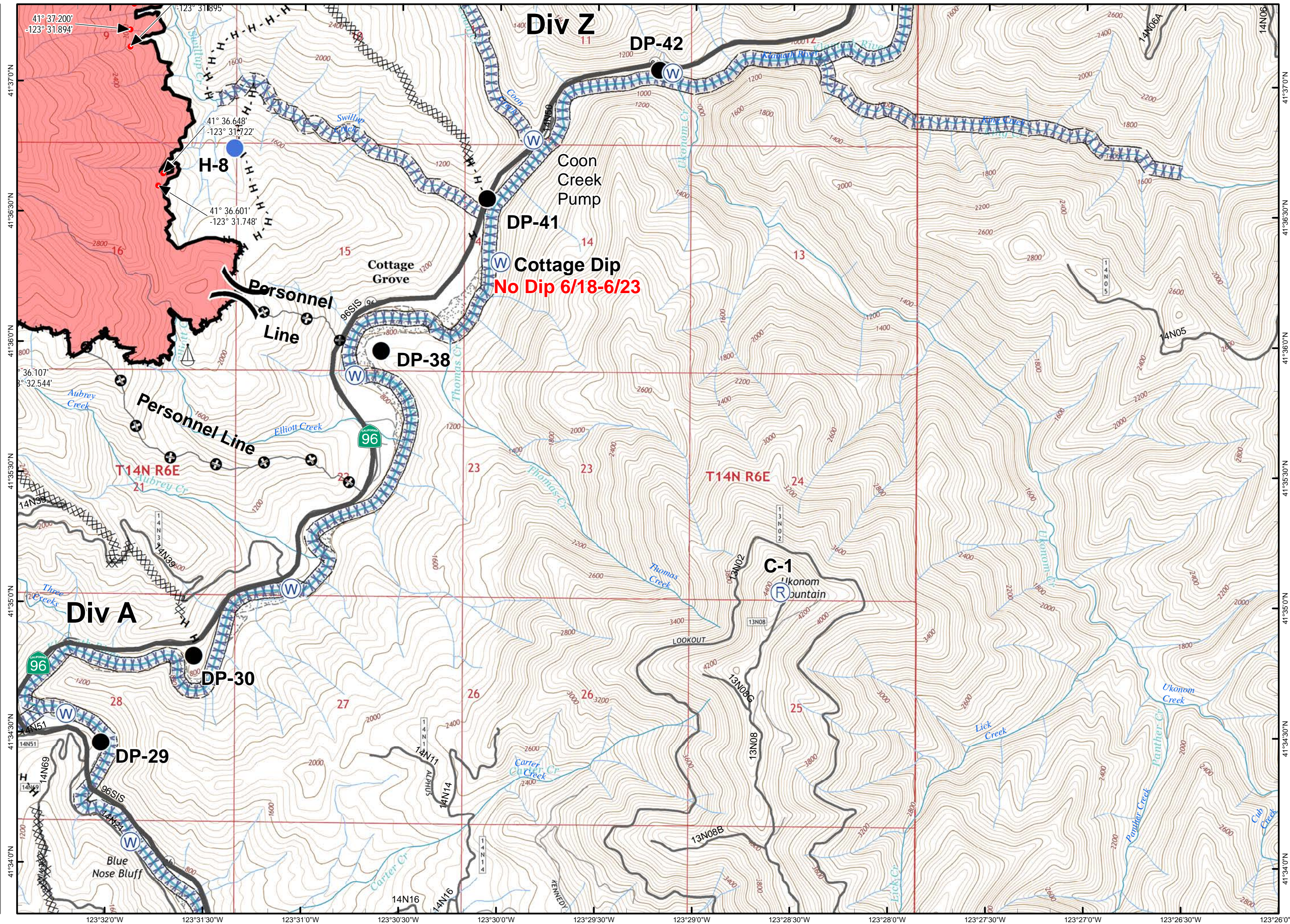
PAGE 7 OF 10

- Isolated Heat within 300' of Perimeter
- Drop Point
- Helispot
- Ⓜ Repeater
- ⚓ Sling Site
- Ⓜ Water Source
- XXXX Completed Dozer Line
- Completed Line
- H - H Hand Line
- ⊕ Personnel Line
-) (Division Break
- Minor Streams
- Major Streams
- Rivers
- XX Screen Only Drafting



0 0.5

MILES
NAD 83

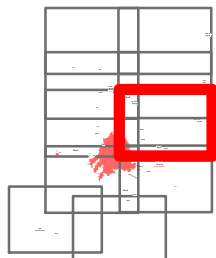


IAP MAP

PONY INCIDENT
CA-KNF-004500
JUNE 23, 2016

PAGE 8 OF 10

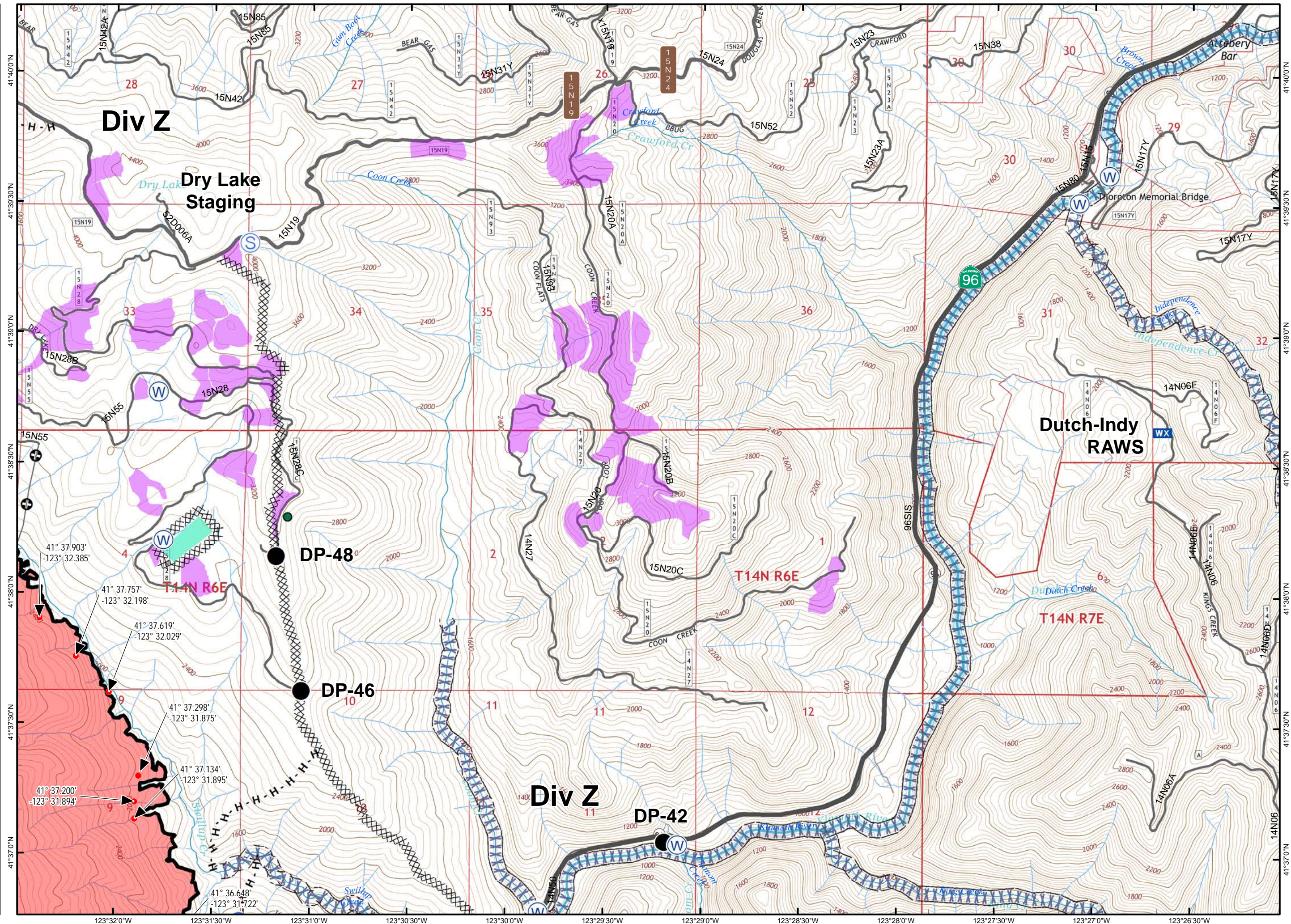
- Isolated Heat within 300' of Perimeter
- Drop Point
- Helispot
- WX Mobile Weather Unit
- S Staging Area
- W Water Source
- XXXX Completed Dozer Line
- Completed Line
- H · H Hand Line
- ⊕ Personnel Line
-) (Division Break
- Spotted Owl Site
- Progeny Site
- Crawford Project Unit
- Minor Streams
- Major Streams
- Rivers
- XX Screen Only Drafting



0 0.5

MILES

NAD 83

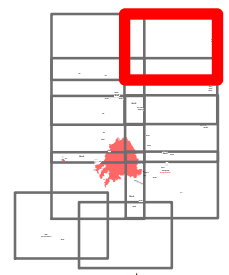
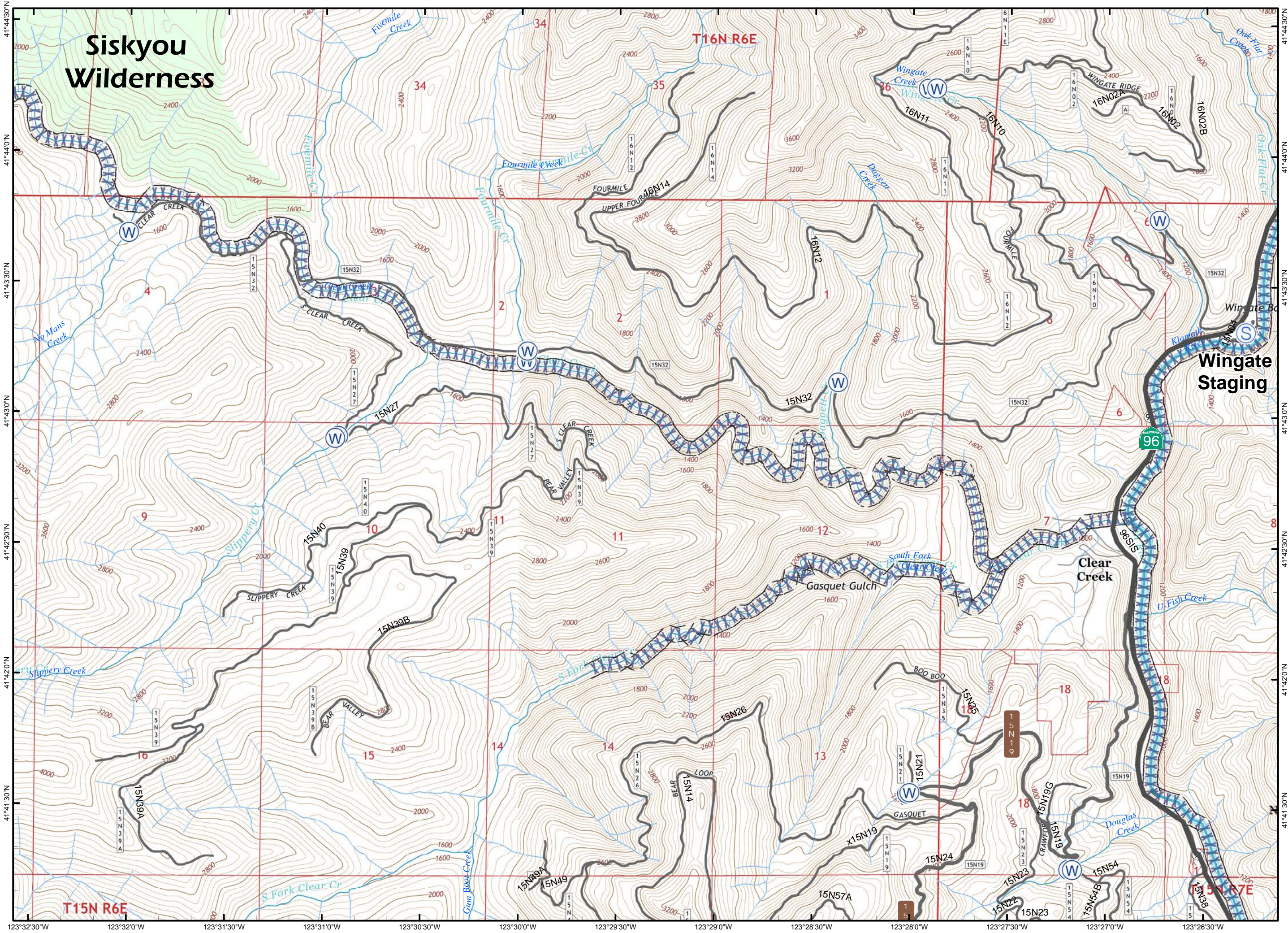


IAP MAP

PONY INCIDENT
CA-KNF-004500
JUNE 23, 2016

PAGE 10 OF 10

- Staging Area
- Water Source
- Division Break
- Minor Streams
- Major Streams
- Rivers
- Screen Only Drafting
- Wilderness Area



MILES
NAD 83

