

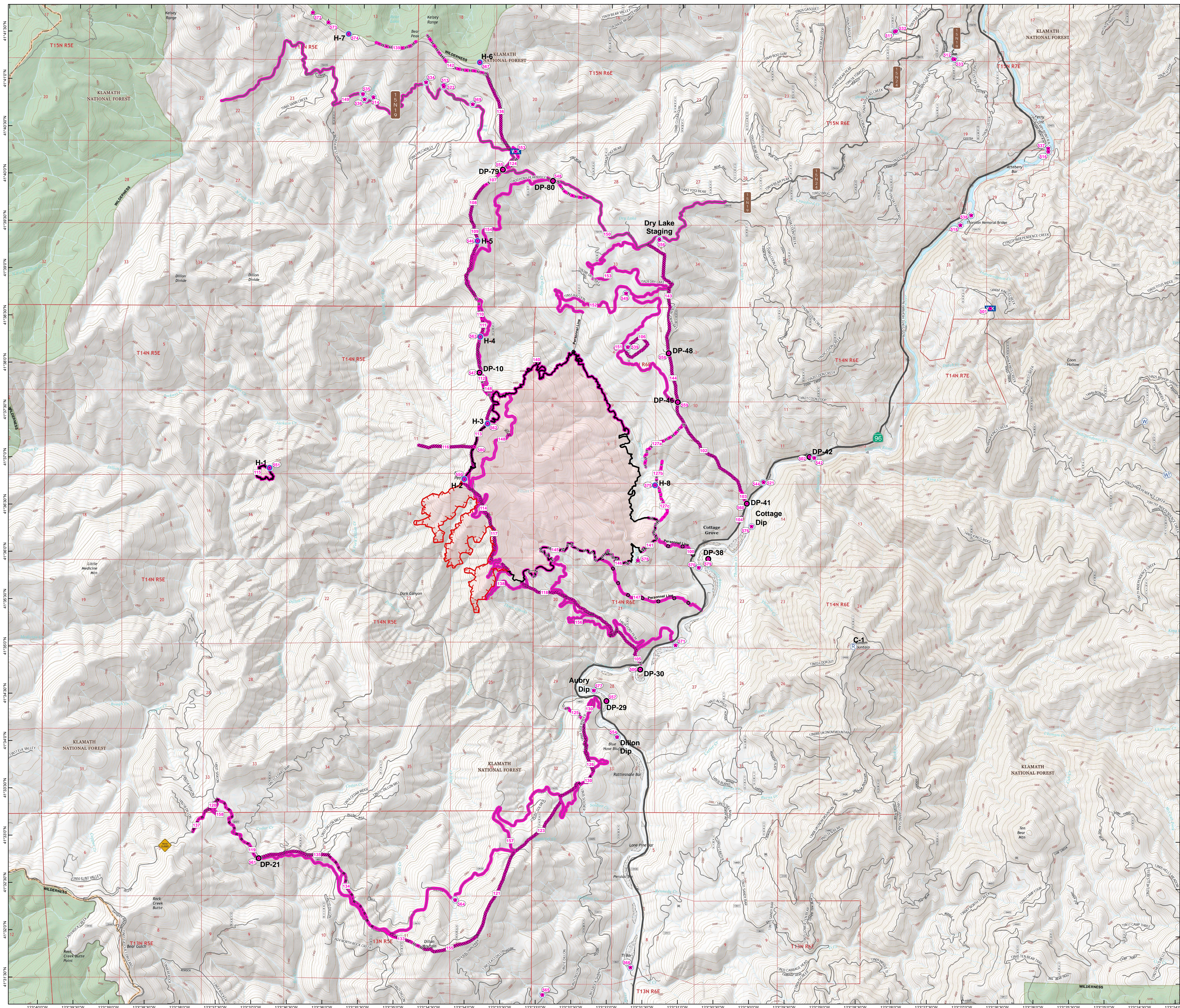
SUPPRESSION REPAIR MAP PONY INCIDENT CA-KNF-004500

JUNE 23, 2016

2,858 ACRES
22:07 HRS
6/20/2016

- Drop Point
- Helispot
- WX Mobile Weather Unit
- Ⓡ Repeater
- Ⓜ Sling Site
- Ⓢ Staging Area
- Ⓦ Water Source
- ◆ Other
- H · H · H Hand Line
- Uncontrolled Fire Edge
- ⊘ Completed Dozer Line
- Completed Line
- R · R · R Road as Completed Line
- Other
- Road

- Identified as needing repair, no work initiated
 - Repair work in progress
 - Repair work completed per READ
-
- Identified as needing repair, no work initiated
 - Repair work in progress
 - Repair work completed per READ



NAD 1983

0 0.25 0.5 1
MILES