

IAP MAP

PONY INCIDENT
CA-KNF-004500
JUNE 25, 2016

2,858 ACRES
AS OF 22:07
06/20/16

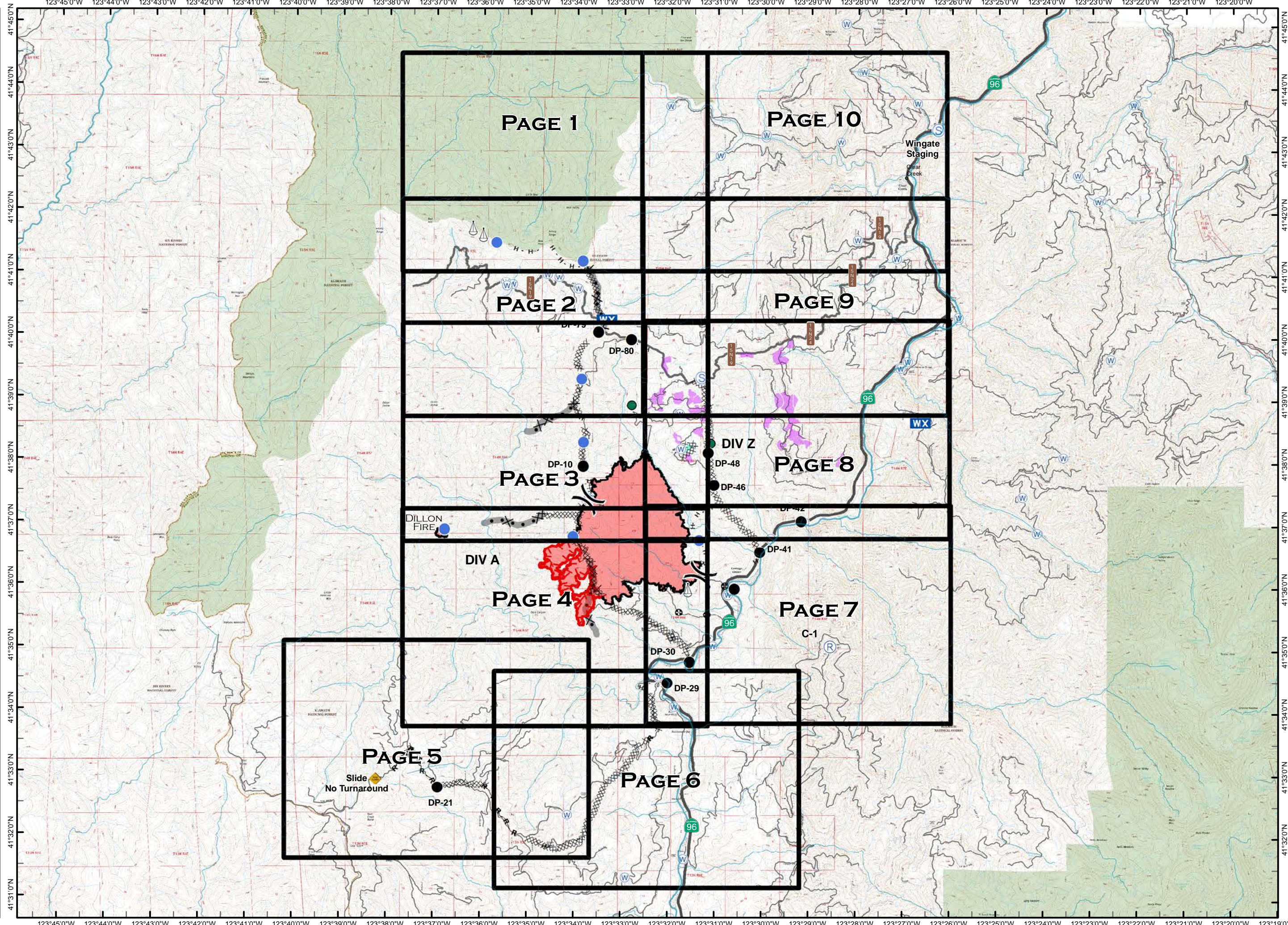
- Minor Streams
- Major Streams
- Rivers
- Grid
- OTHER
- DROP POINT
- HELISPOT
- MOBILE WEATHER UNIT
- REPEATER
- SLING SITE
- STAGING AREA
- WATER SOURCE
- UNCONTROLLED FIRE EDGE
- COMPLETED DOZER LINE
- COMPLETED LINE
- H · H · HAND LINE
- R · R · ROAD AS COMPLETED LINE
- OTHER
- DIVISION BREAK
- SPOTTED OWL SITE
- PROGENY SITE
- CRAWFORD PROJECT UNIT
- HISTORICAL FIRELINE
- WILDERNESS AREA



0 1 2

MILES

NAD 83

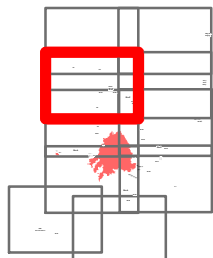


IAP MAP

PONY INCIDENT
CA-KNF-004500
JUNE 25, 2016

PAGE 2 OF 10

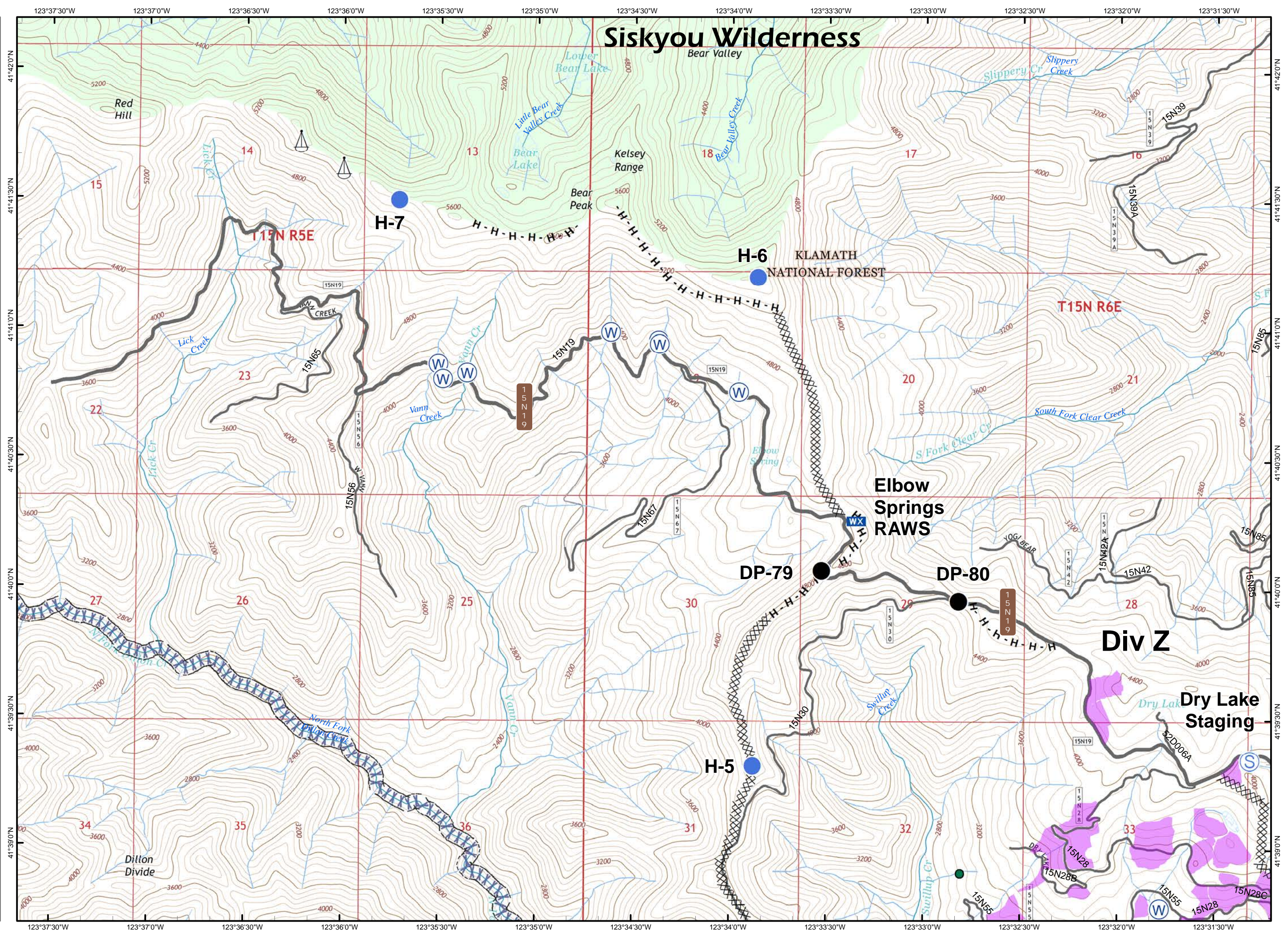
- Drop Point
- Helispot
- WX Mobile Weather Unit
- ⚓ Sling Site
- Ⓢ Staging Area
- Ⓜ Water Source
- XXXX Completed Dozer Line
- H - H Hand Line
-) (Division Break
- Spotted Owl Site
- ▭ Crawford Project Unit
- Minor Streams
- Major Streams
- XX Screen Only Drafting
- Wilderness Area



0 0.5

MILES

NAD 83

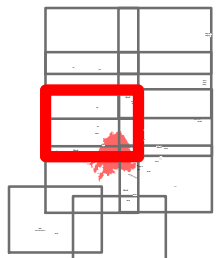


IAP MAP

PONY INCIDENT
CA-KNF-004500
JUNE 25, 2016

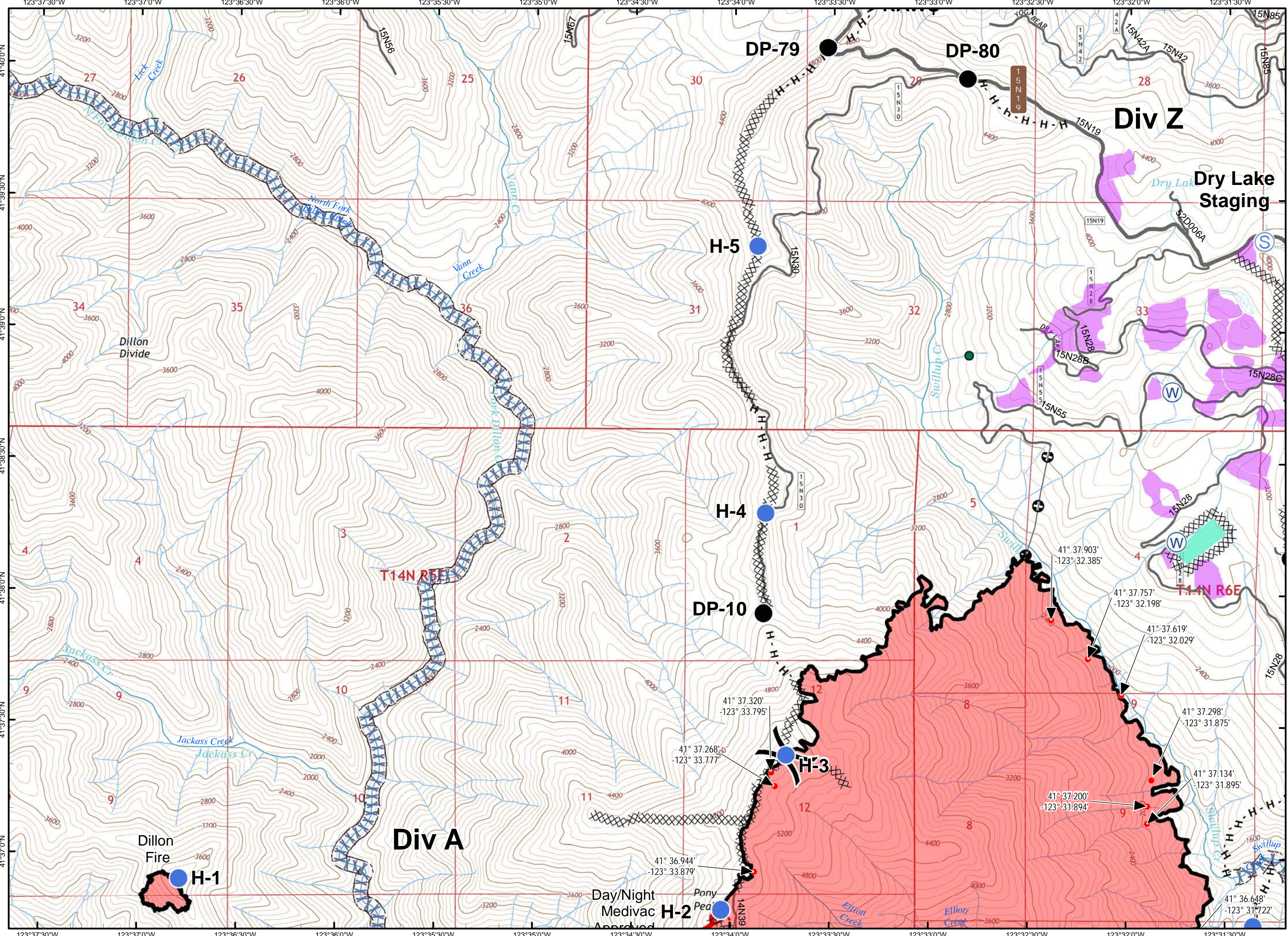
PAGE 3 OF 10

- Isolated Heat within 300' of Perimeter
- Drop Point
- Helispot
- Ⓢ Staging Area
- Ⓜ Water Source
- ▬ Uncontrolled Fire Edge
- XXXX Completed Dozer Line
- ▬ Completed Line
- H - H Hand Line
- ⊕ Personnel Line
-) (Division Break
- Spotted Owl Site
- Progeny Site
- Crawford Project Unit
- Minor Streams
- Major Streams
- XX Screen Only Drafting



0 0.5

MILES
NAD 83



Dillon Fire

Div A

Div Z

Dry Lake Staging

Day/Night
Medivac H-2
Approved

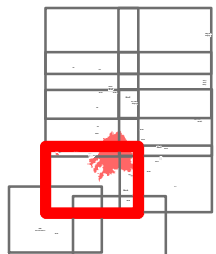
- 41° 37.903' -123° 32.385'
- 41° 37.757' -123° 32.198'
- 41° 37.619' -123° 32.029'
- 41° 37.298' -123° 31.875'
- 41° 37.134' -123° 31.895'
- 41° 37.200' -123° 31.894'
- 41° 36.944' -123° 33.879'
- 41° 37.320' -123° 33.795'
- 41° 37.268' -123° 33.777'
- 41° 36.648' -123° 31.722'

IAP MAP

PONY INCIDENT
CA-KNF-004500
JUNE 25, 2016

PAGE 4 OF 10

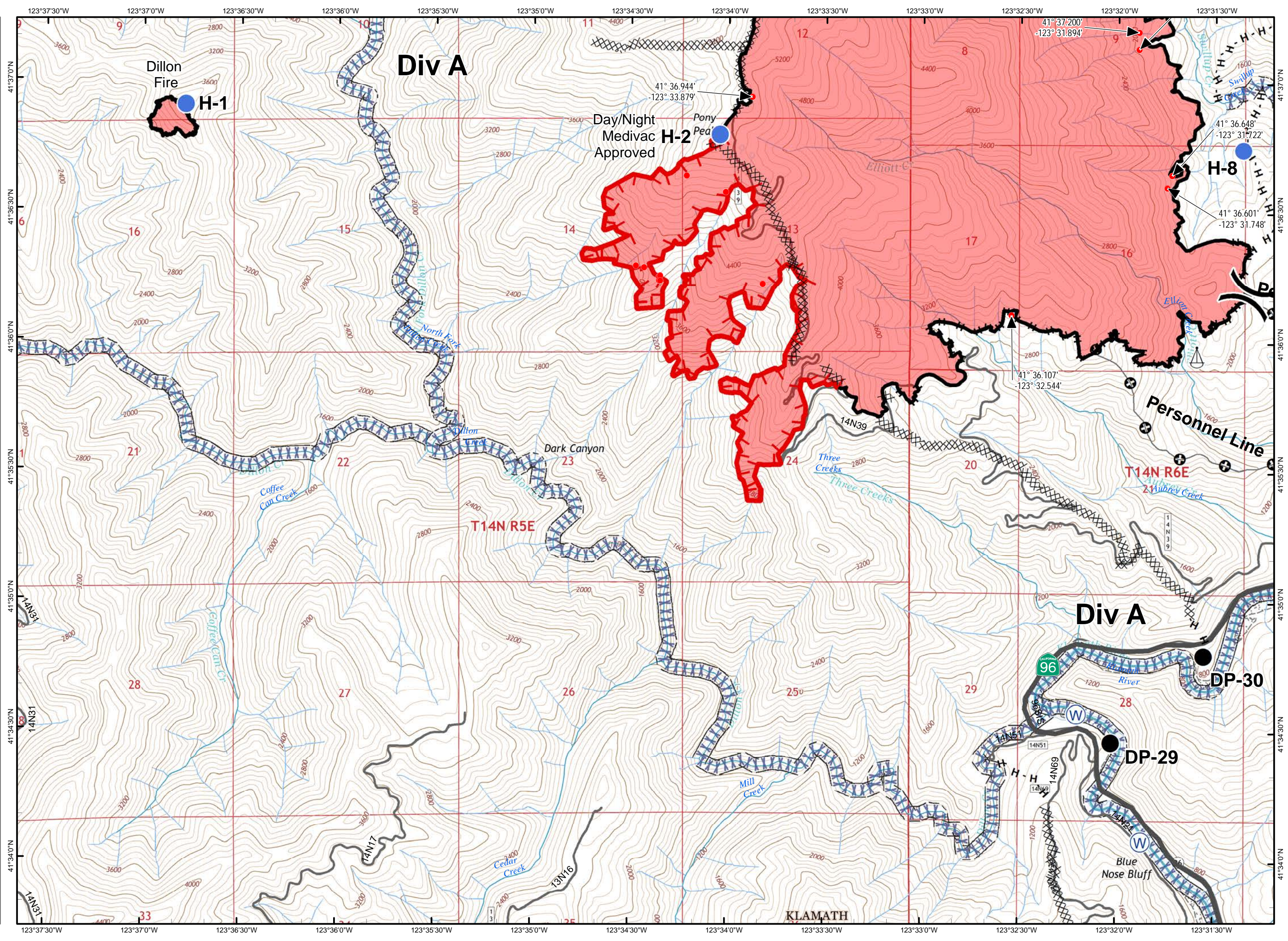
- Isolated Heat within 300' of Perimeter
- Drop Point
- Helispot
- ⚓ Sling Site
- Ⓜ Water Source
- ┌ Uncontrolled Fire Edge
- XXXX Completed Dozer Line
- Completed Line
- H - H Hand Line
- ⊕ Personnel Line
-) (Division Break
- Minor Streams
- Major Streams
- Rivers
- XX Screen Only Drafting



0 0.5

MILES

NAD 83

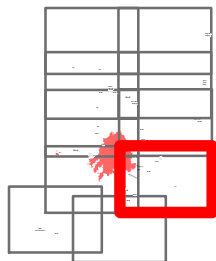


IAP MAP

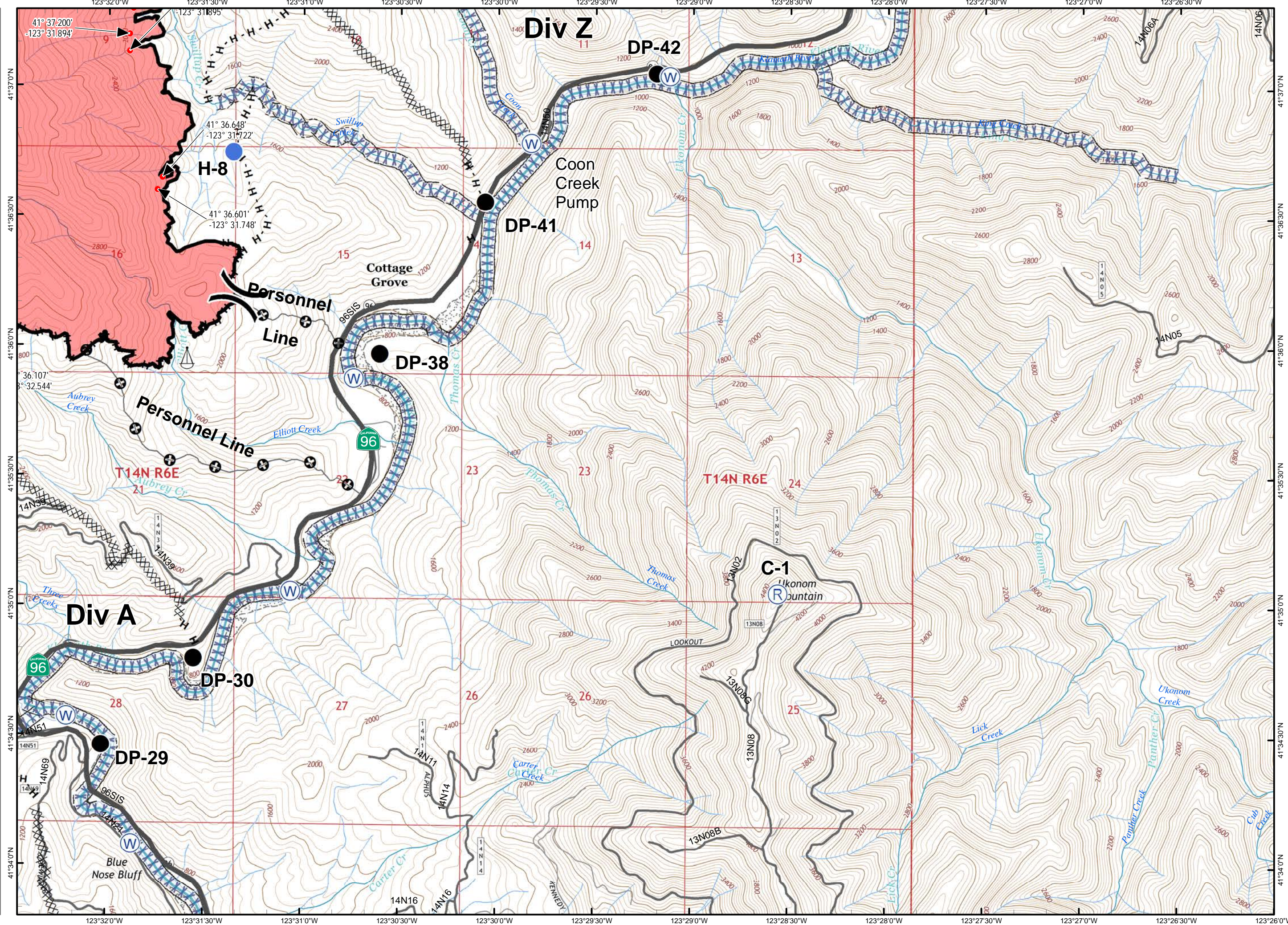
PONY INCIDENT
CA-KNF-004500
JUNE 25, 2016

PAGE 7 OF 10

- Isolated Heat within 300' of Perimeter
- Drop Point
- Helispot
- Ⓡ Repeater
- ⚓ Sling Site
- Ⓜ Water Source
- XXXX Completed Dozer Line
- Completed Line
- H - H Hand Line
- ⊕ Personnel Line
-) (Division Break
- Minor Streams
- Major Streams
- Rivers
- XX Screen Only Drafting



MILES
NAD 83

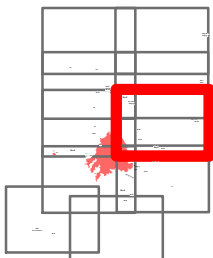


IAP MAP

PONY INCIDENT
CA-KNF-004500
JUNE 25, 2016

PAGE 8 OF 10

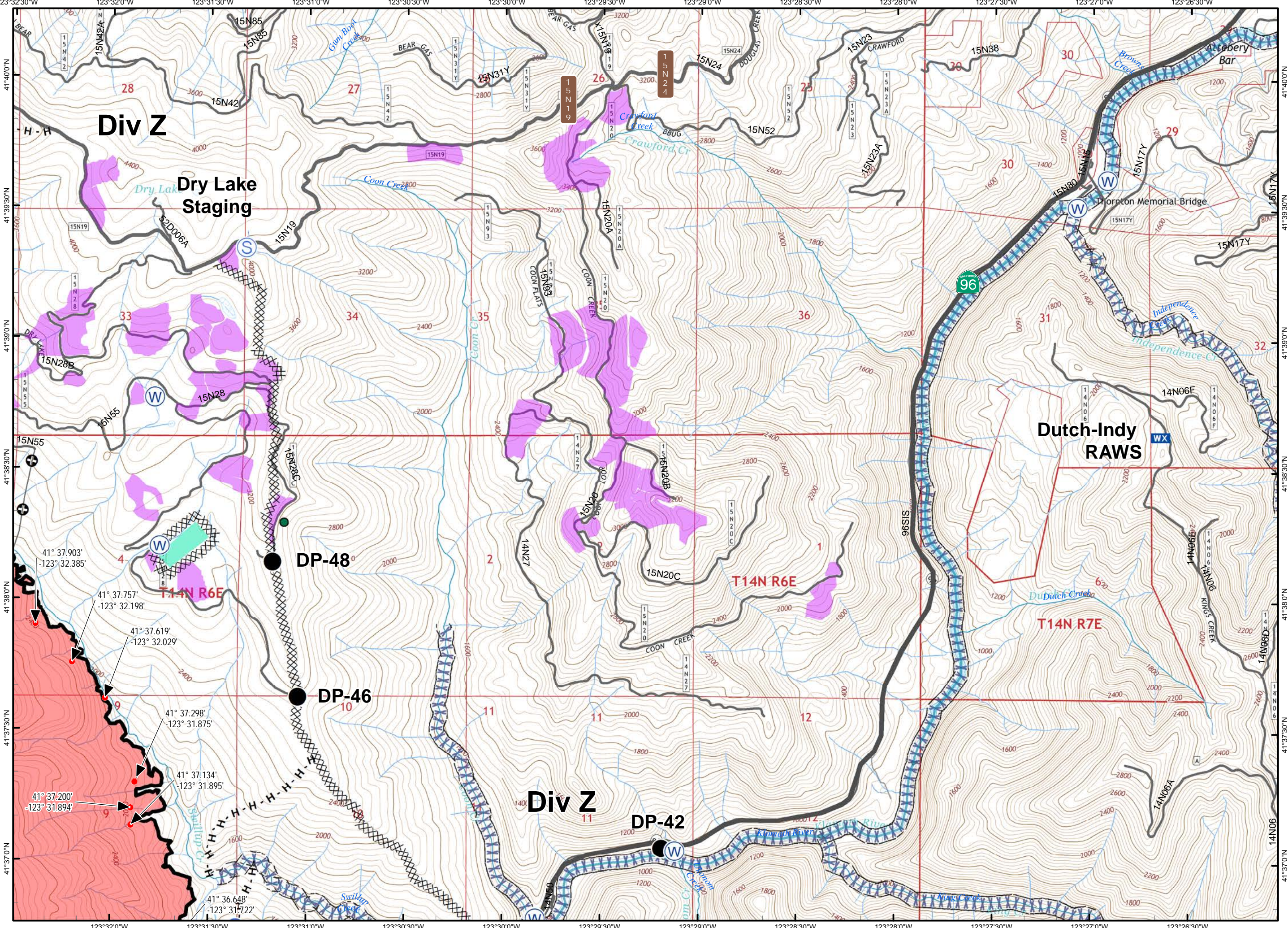
- Isolated Heat within 300' of Perimeter
- Drop Point
- Helispot
- WX Mobile Weather Unit
- S Staging Area
- W Water Source
- XXXX Completed Dozer Line
- Completed Line
- H · H Hand Line
- ⊕ Personnel Line
-) (Division Break
- Spotted Owl Site
- Progeny Site
- Crawford Project Unit
- Minor Streams
- Major Streams
- Rivers
- XX Screen Only Drafting



0 0.5

MILES











NAD 83

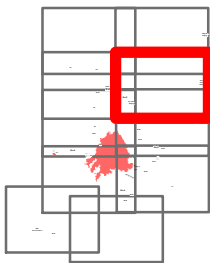


IAP MAP

PONY INCIDENT
CA-KNF-004500
JUNE 25, 2016

PAGE 9 OF 10

-  Staging Area
-  Water Source
-  Completed Dozer Line
-  Hand Line
-  Division Break
-  Crawford Project Unit
-  Minor Streams
-  Major Streams
-  Rivers
-  Screen Only Drafting



0 0.5

MILES
NAD 83

