

IAP MAP

PONY INCIDENT
CA-KNF-004500
JULY 5, 2016

2,858 ACRES
AS OF 22:07
06/20/16

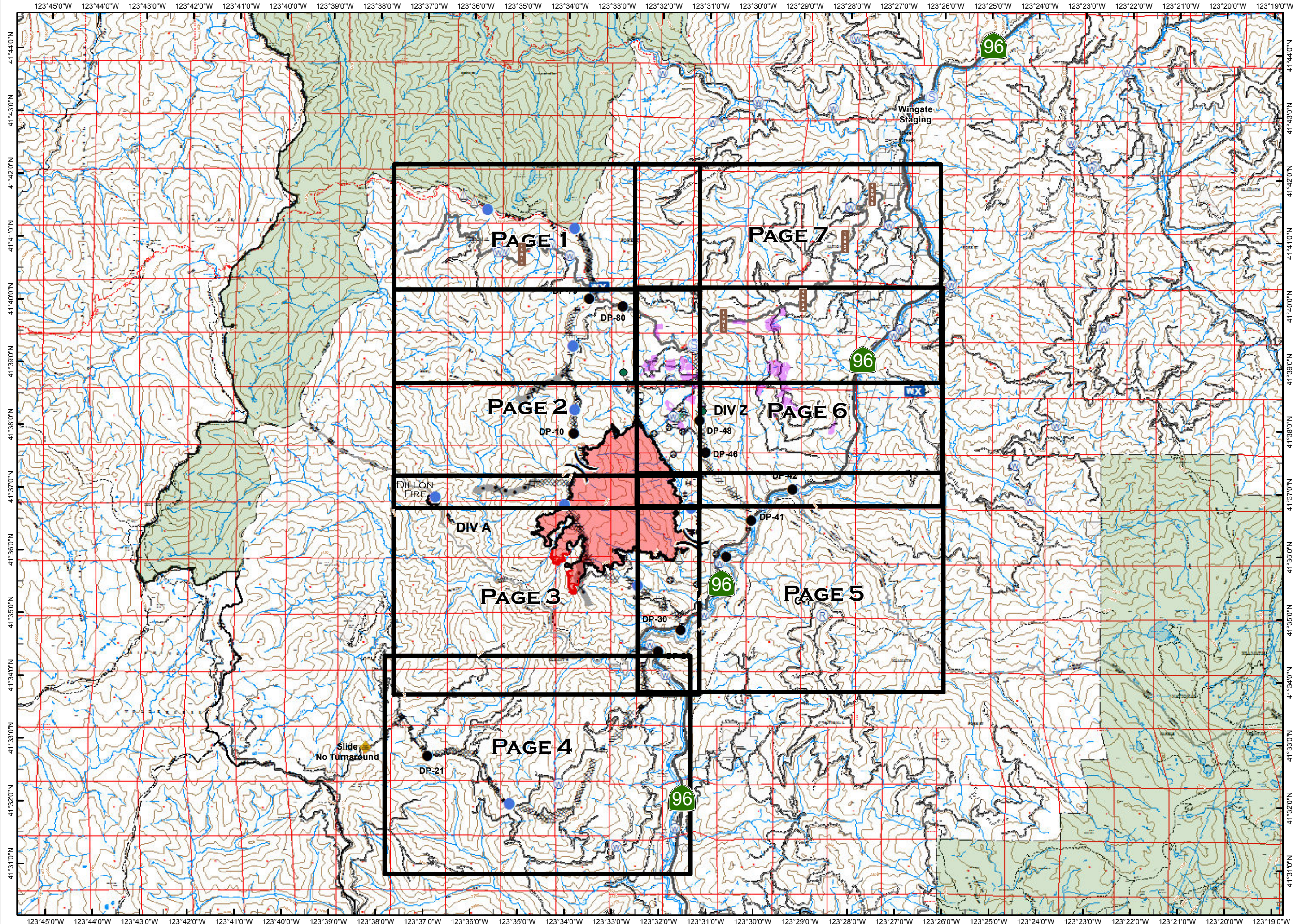
- Map Index
- OTHER
- DROP POINT
- HELISPOT
- WX MOBILE WEATHER UNIT
- REPEATER
- SLING SITE
- STAGING AREA
- WATER SOURCE
- UNCONTROLLED FIRE EDGE
- COMPLETED DOZER LINE
- COMPLETED LINE
- H · H · HAND LINE
- R · R · ROAD AS COMPLETED LINE
- OTHER
- DIVISION BREAK
- SPOTTED OWL SITE
- PROGENY SITE
- CRAWFORD PROJECT UNIT
- HISTORICAL FIRELINE
- WILDERNESS AREA



0 1 2

MILES

NAD 83

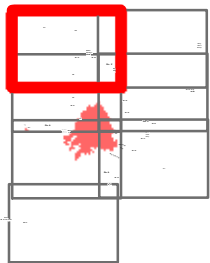


IAP MAP

PONY INCIDENT
CA-KNF-004500
JULY 5, 2016

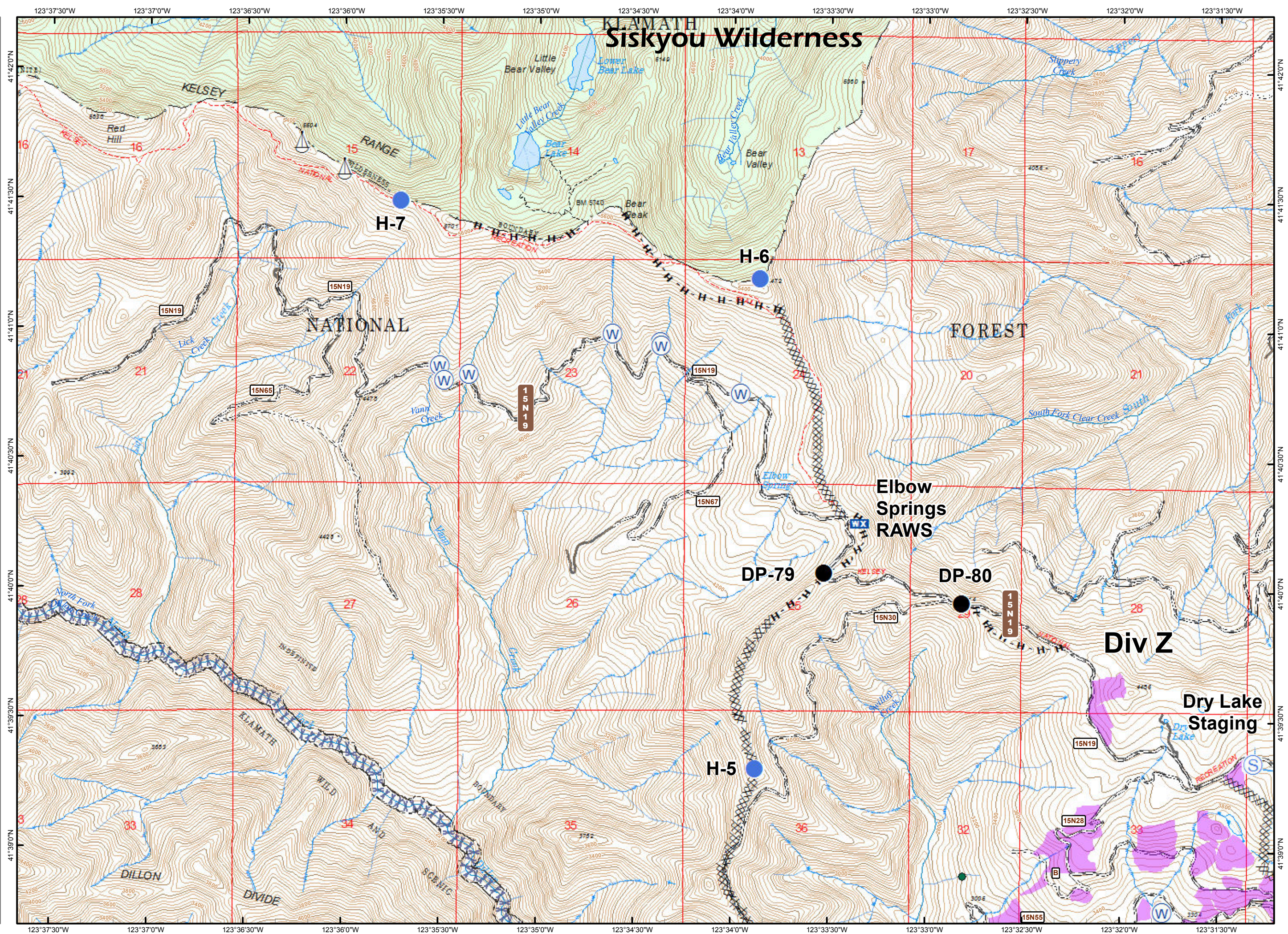
PAGE 1 OF 6

- XXXX Completed Dozer Line
- H - H Hand Line
- Drop Point
- Helispot
- WX Mobile Weather Unit
- ⚓ Sling Site
- ⊙ Staging Area
- ⊙ Water Source
- () Division Break
- Spotted Owl Site
- ▭ Crawford Project Unit
- Minor Streams
- Major Streams
- XX Screen Only Drafting
- Wilderness Area



MILES

NAD 83

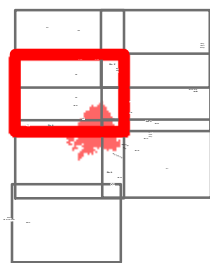


IAP MAP

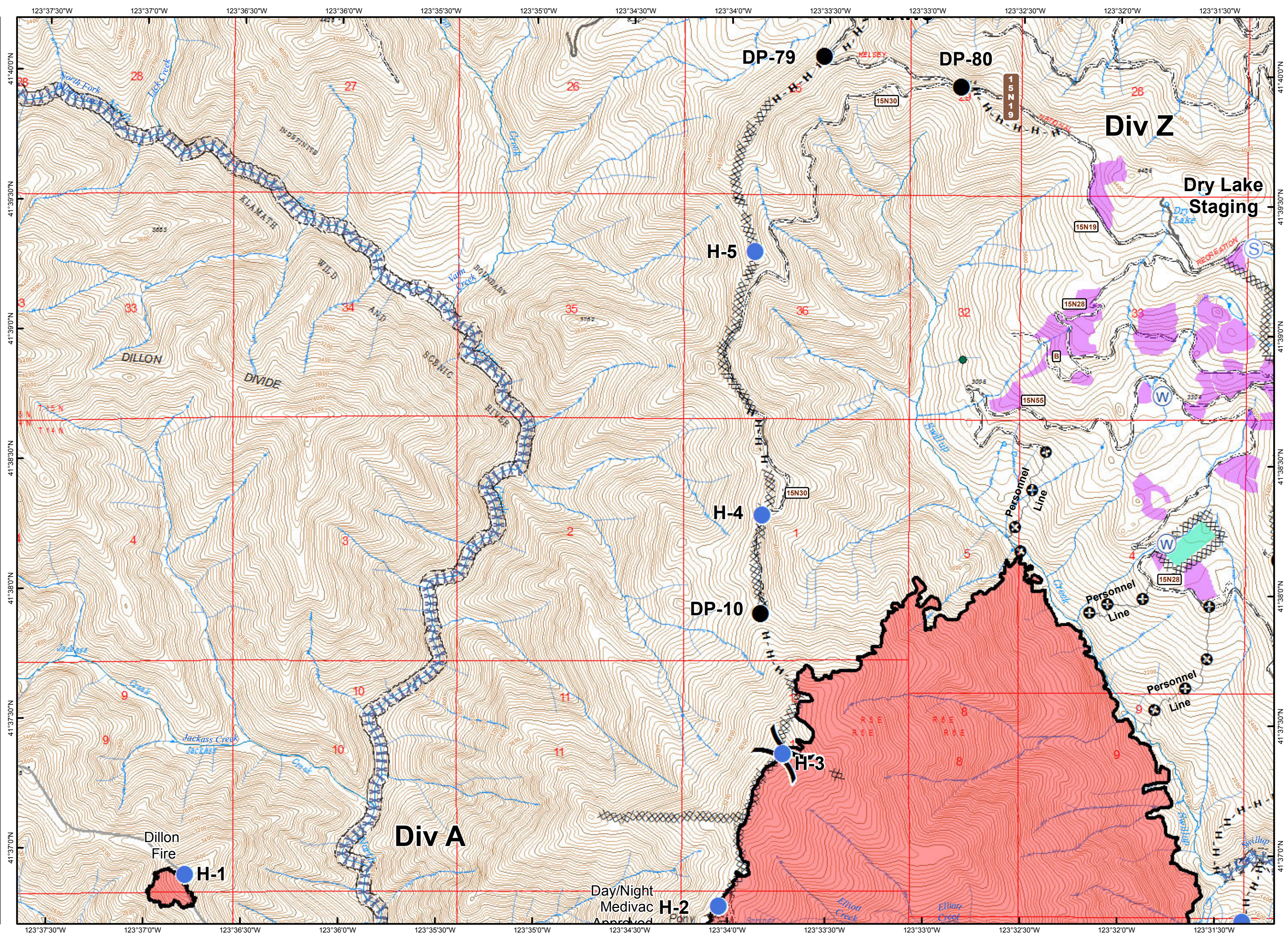
PONY INCIDENT
CA-KNF-004500
JULY 5, 2016

PAGE 2 OF 6

- XXXX Completed Dozer Line
- Completed Line
- H - H Hand Line
- + Personnel Line
- Drop Point
- Helispot
- (S) Staging Area
- (W) Water Source
- () Division Break
- Spotted Owl Site
- Progeny Site
- Crawford Project Unit
- Minor Streams
- Major Streams
- XX Screen Only Drafting



MILES
NAD 83

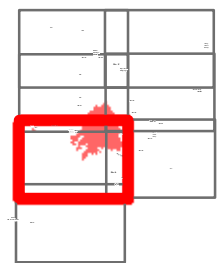


IAP MAP

PONY INCIDENT
CA-KNF-004500
JULY 5, 2016

PAGE 3 OF 6

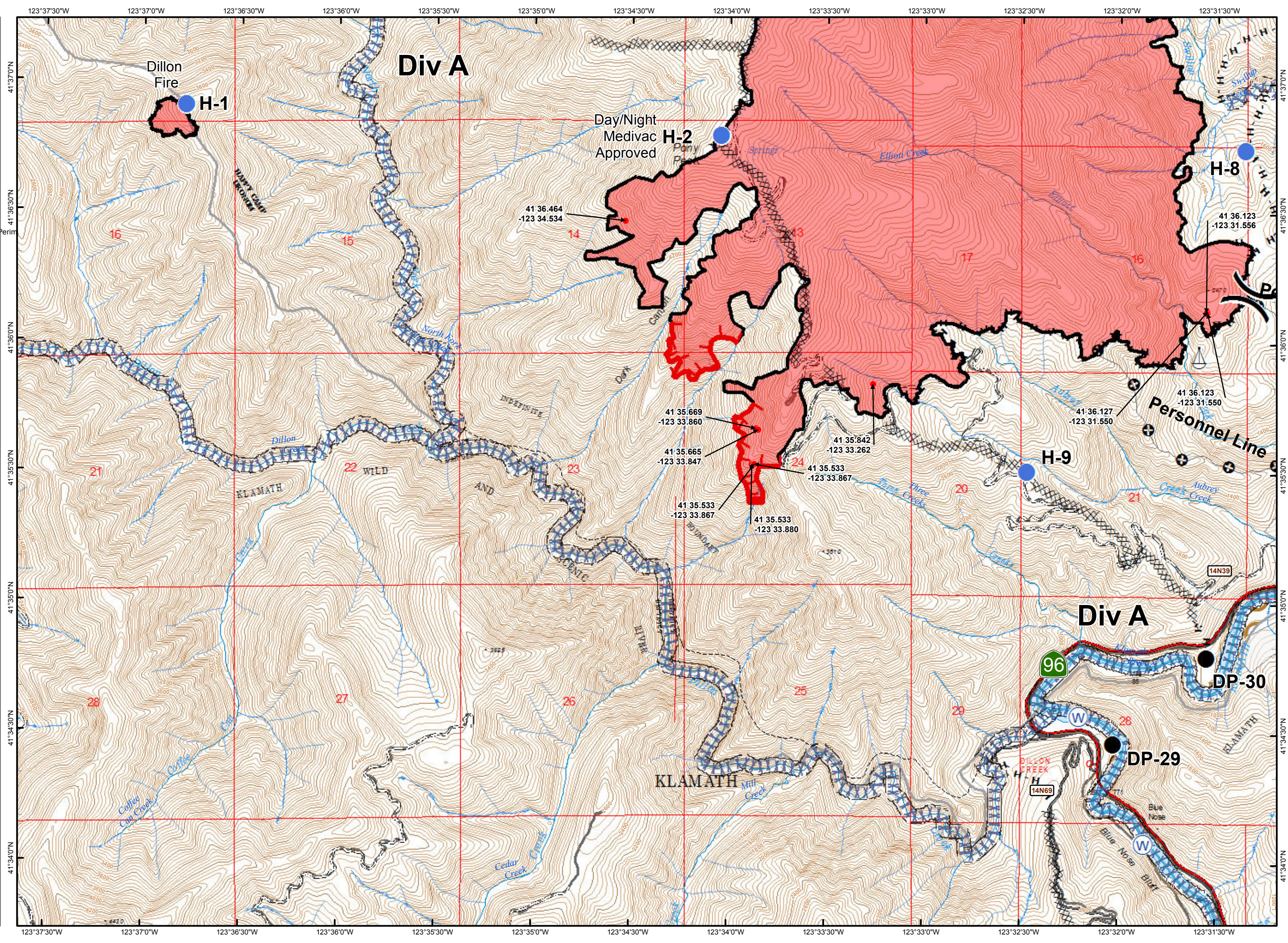
- IsolatedHeat20160629 - 300' from Perim
- Uncontrolled Fire Edge
- XXXX Completed Dozer Line
- Completed Line
- H - H Hand Line
- + Personnel Line
- Drop Point
- Helispot
- ⚓ Sling Site
- Ⓜ Water Source
- () Division Break
- Minor Streams
- Major Streams
- Rivers
- XXX Screen Only Drafting



0 0.5

MILES

NAD 83

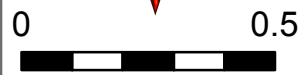
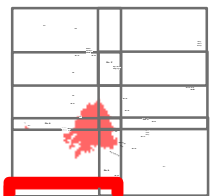


IAP MAP

PONY INCIDENT
CA-KNF-004500
JULY 5, 2016

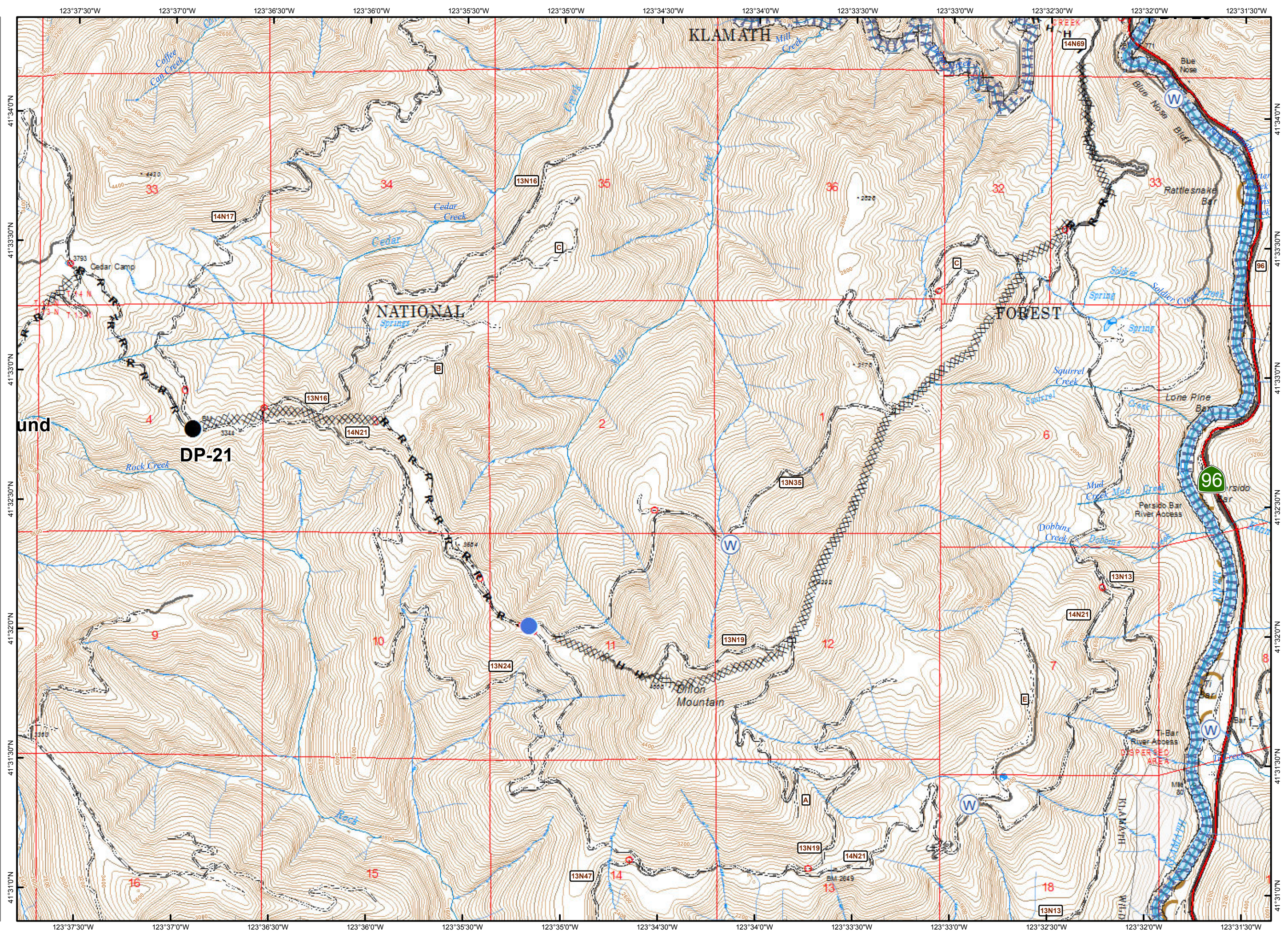
PAGE 4 OF 6

- XXXX Completed Dozer Line
- H · H Hand Line
- R · R Road as Completed Line
- Drop Point
- Helispot
- W Water Source
- () Division Break
- Minor Streams
- Major Streams
- Rivers
- Screen Only Drafting



MILES

NAD 83

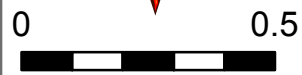


IAP MAP

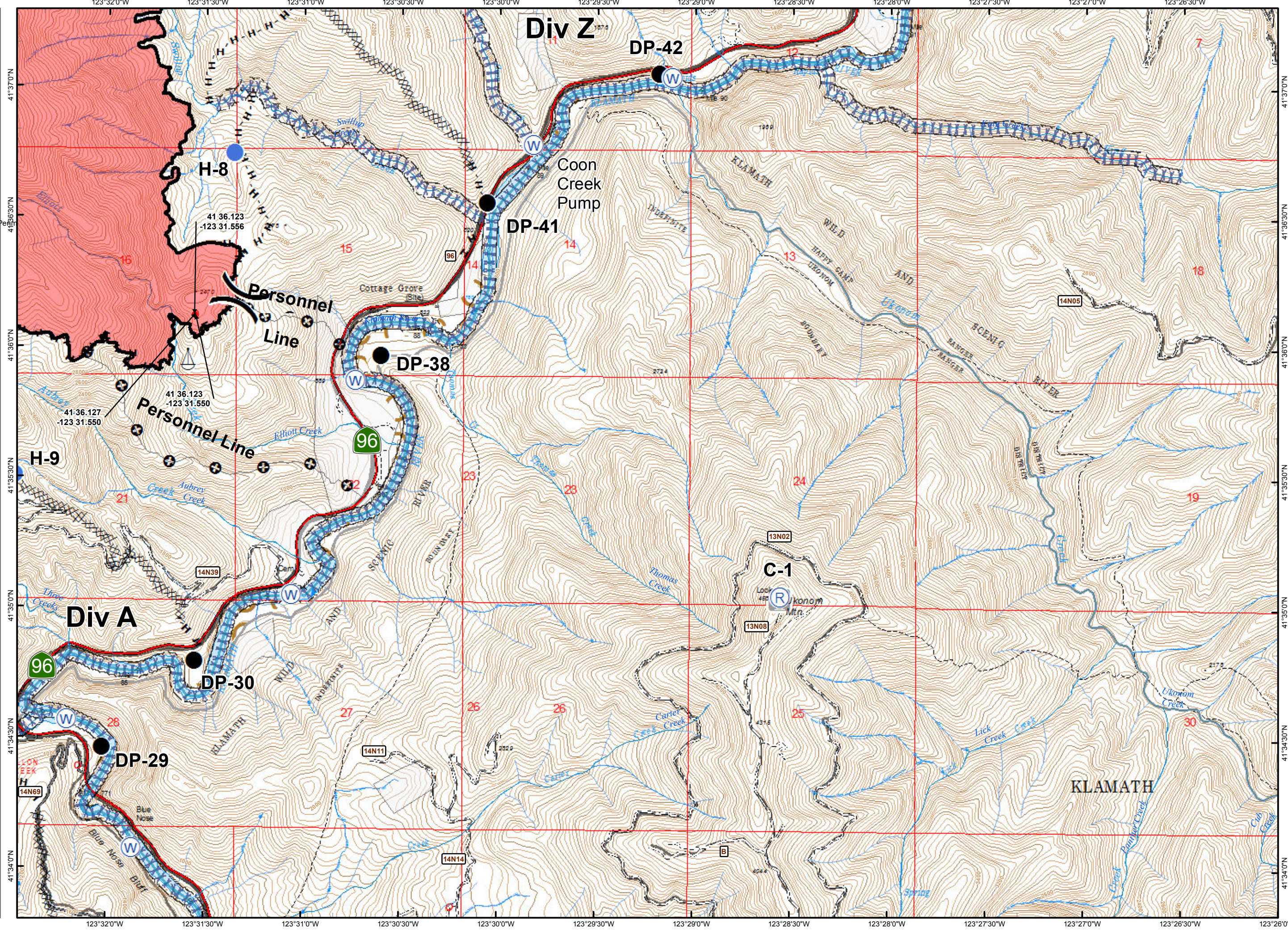
PONY INCIDENT
CA-KNF-004500
JULY 5, 2016

PAGE 5 OF 6

- IsolatedHeat20160629 - 300' from Personnel Line
- XXXX Completed Dozer Line
- Completed Line
- H - H Hand Line
- + Personnel Line
- Drop Point
- Helispot
- Ⓡ Repeater
- ⚓ Sling Site
- Ⓜ Water Source
-) Division Break
- Minor Streams
- Major Streams
- Rivers
- XX Screen Only Drafting



MILES
NAD 83

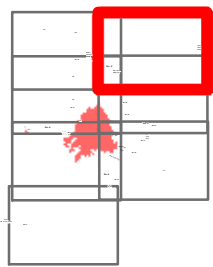


IAP MAP

PONY INCIDENT
CA-KNF-004500
JULY 5, 2016

PAGE 7 OF 6

- XXXX Completed Dozer Line
- H - H Hand Line
- (S) Staging Area
- (W) Water Source
- (X) Division Break
- Crawford Project Unit
- Minor Streams
- Major Streams
- Rivers
- Screen Only Drafting



MILES

NAD 83

