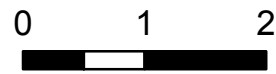


IAP MAP

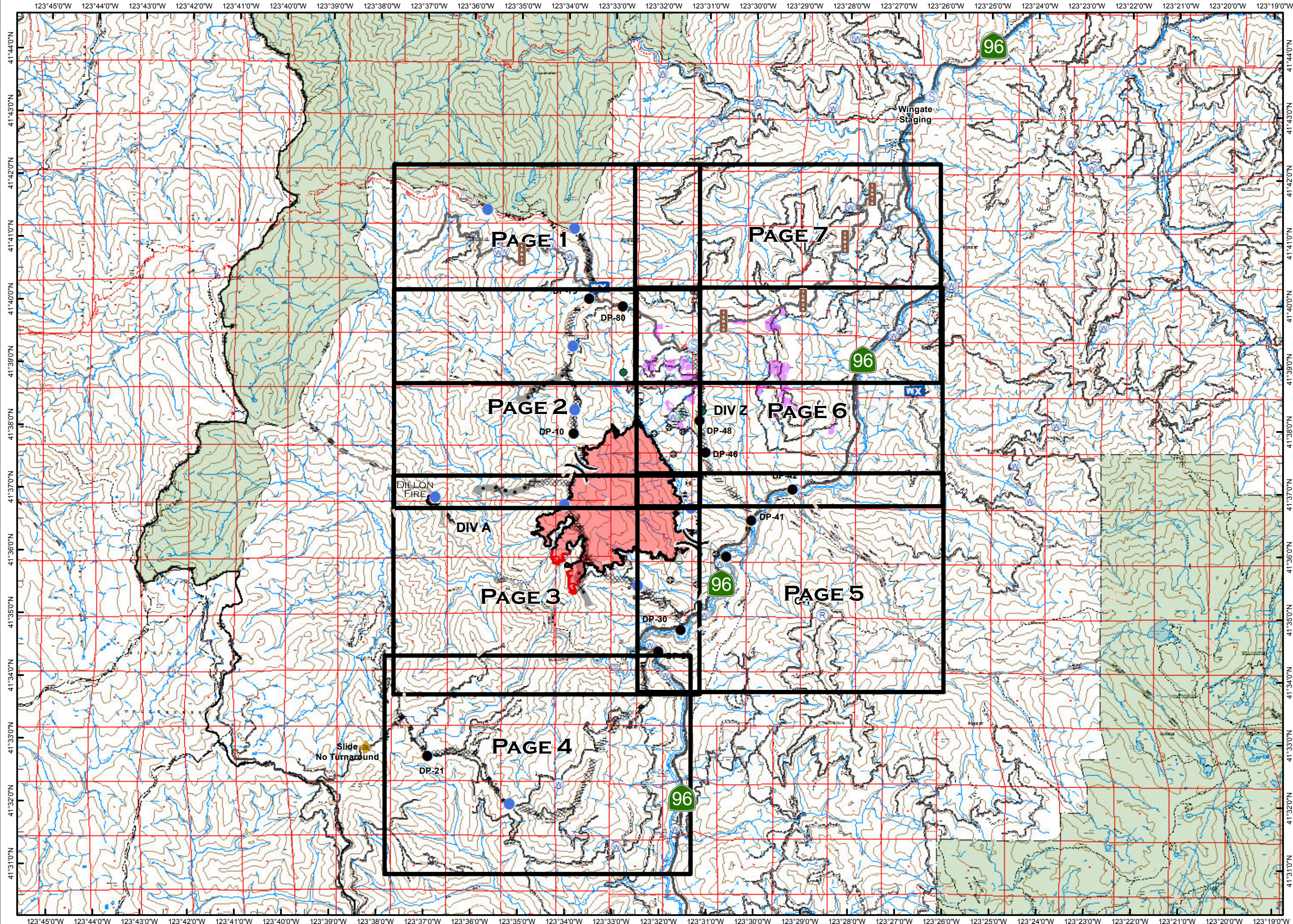
PONY INCIDENT
CA-KNF-004500
JULY 9, 2016

2,858 ACRES
AS OF 22:07
06/20/16

- Map Index
- OTHER
- DROP POINT
- HELISPOT
- MOBILE WEATHER UNIT
- REPEATER
- SLING SITE
- STAGING AREA
- WATER SOURCE
- UNCONTROLLED FIRE EDGE
- COMPLETED DOZER LINE
- COMPLETED LINE
- H · H · HAND LINE
- R · R · ROAD AS COMPLETED LINE
- OTHER
- DIVISION BREAK
- SPOTTED OWL SITE
- PROGENY SITE
- CRAWFORD PROJECT UNIT
- HISTORICAL FIRELINE
- WILDERNESS AREA



MILES
NAD 83

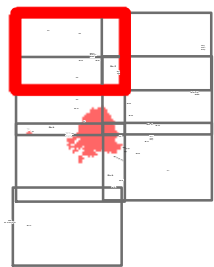


IAP MAP

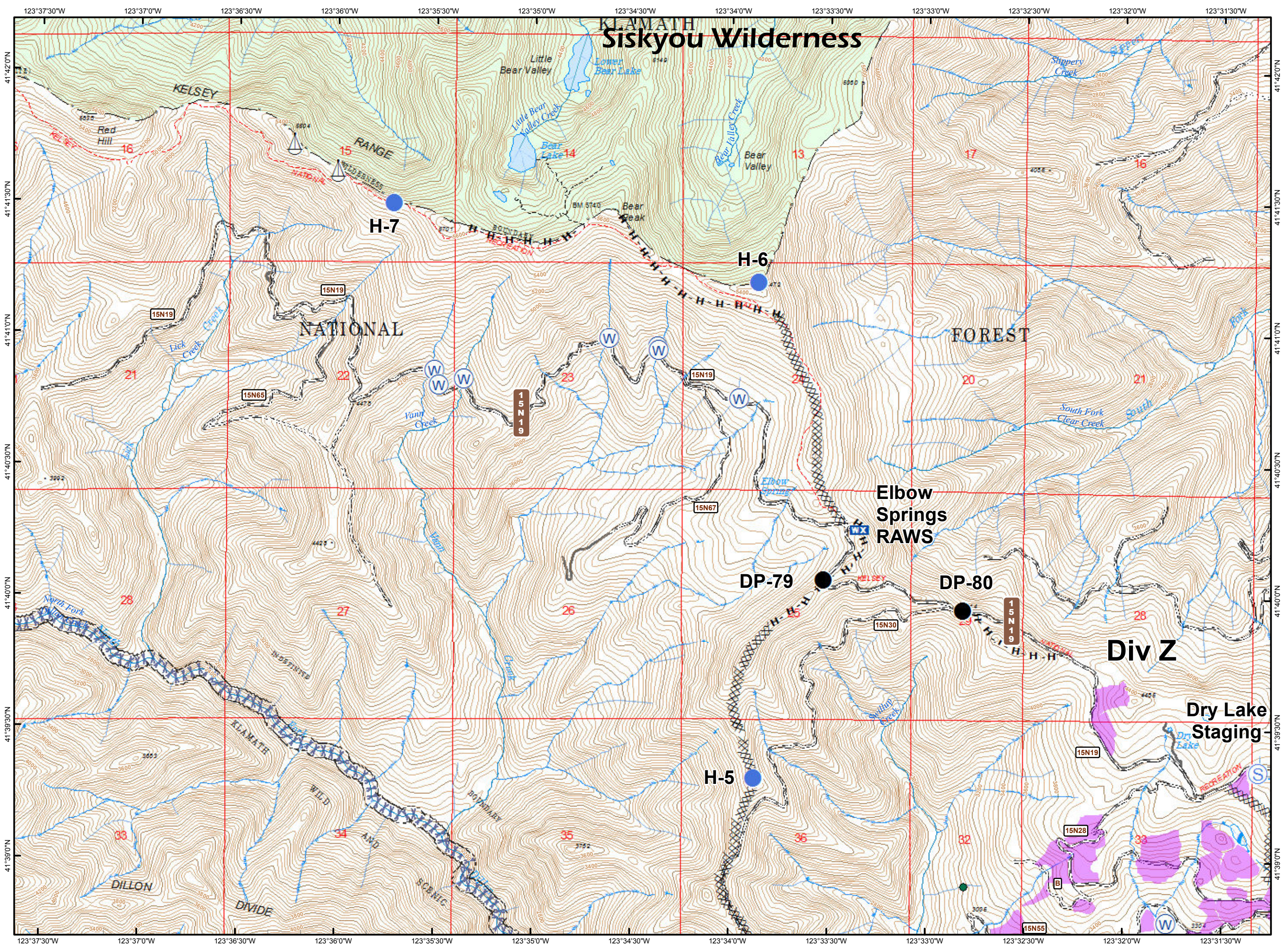
PONY INCIDENT
CA-KNF-004500
JULY 9, 2016

PAGE 1 OF 7

- Drop Point
- Helispot
- WX Mobile Weather Unit
- ⚓ Sling Site
- Ⓢ Staging Area
- Ⓜ Water Source
- XXXX Completed Dozer Line
- H - H Hand Line
-) Division Break
- Spotted Owl Site
- 👤 Crawford Project Unit
- Minor Streams
- Major Streams
- XXX Screen Only Drafting
- 🌿 Wilderness Area



NAD 83

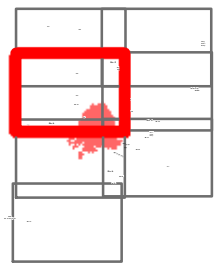


IAP MAP

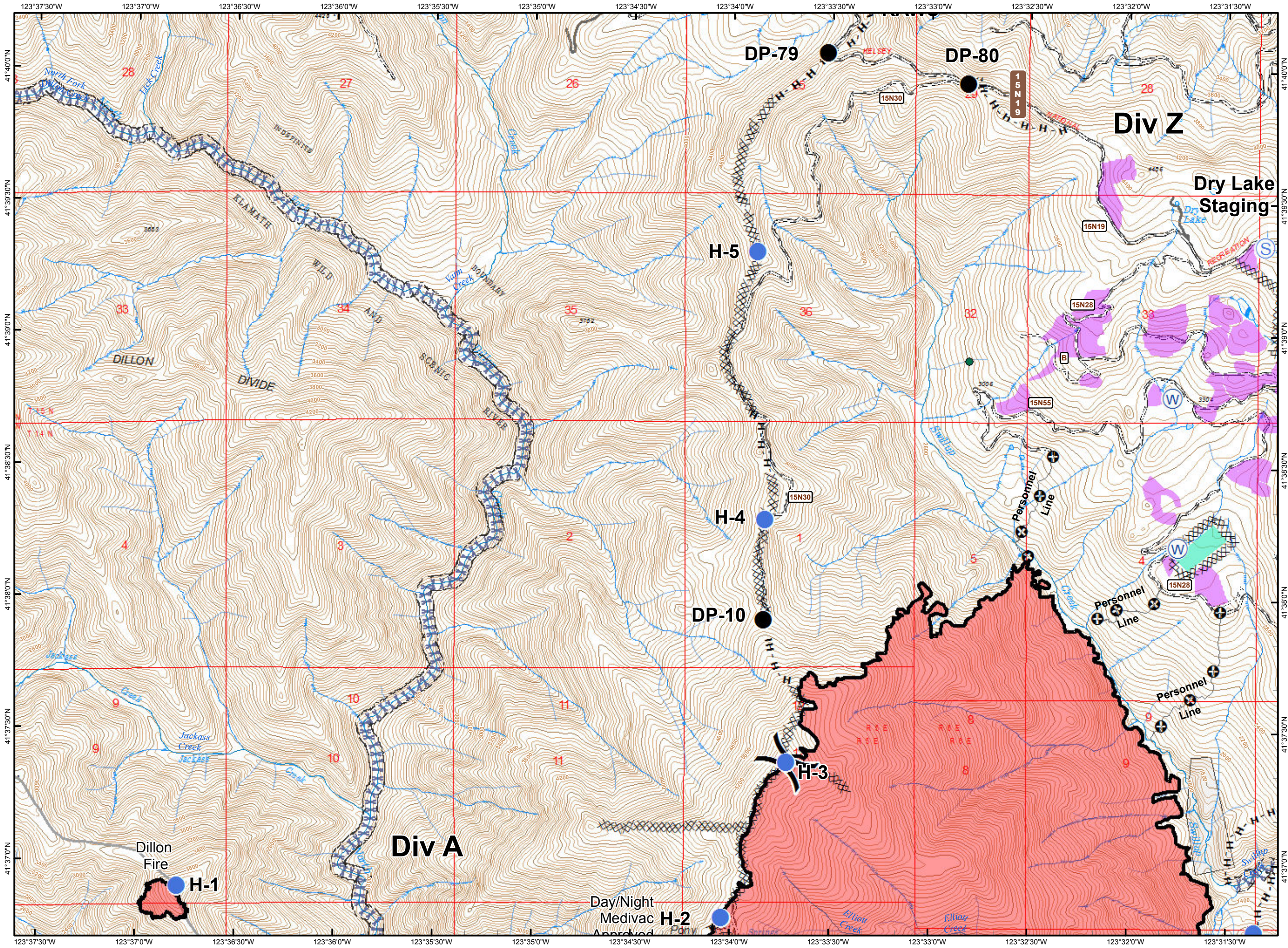
PONY INCIDENT
CA-KNF-004500
JULY 9, 2016

PAGE 2 OF 7

- Drop Point
- Helispot
- Ⓢ Staging Area
- Ⓜ Water Source
- XXXX Completed Dozer Line
- Completed Line
- H · H Hand Line
- ⊕ Personnel Line
-) Division Break
- Spotted Owl Site
- Progeny Site
- 🦋 Crawford Project Unit
- Minor Streams
- Major Streams
- XXX Screen Only Drafting
- Non-USFS Owner



NAD 83

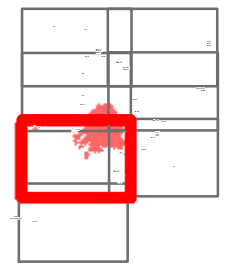


IAP MAP

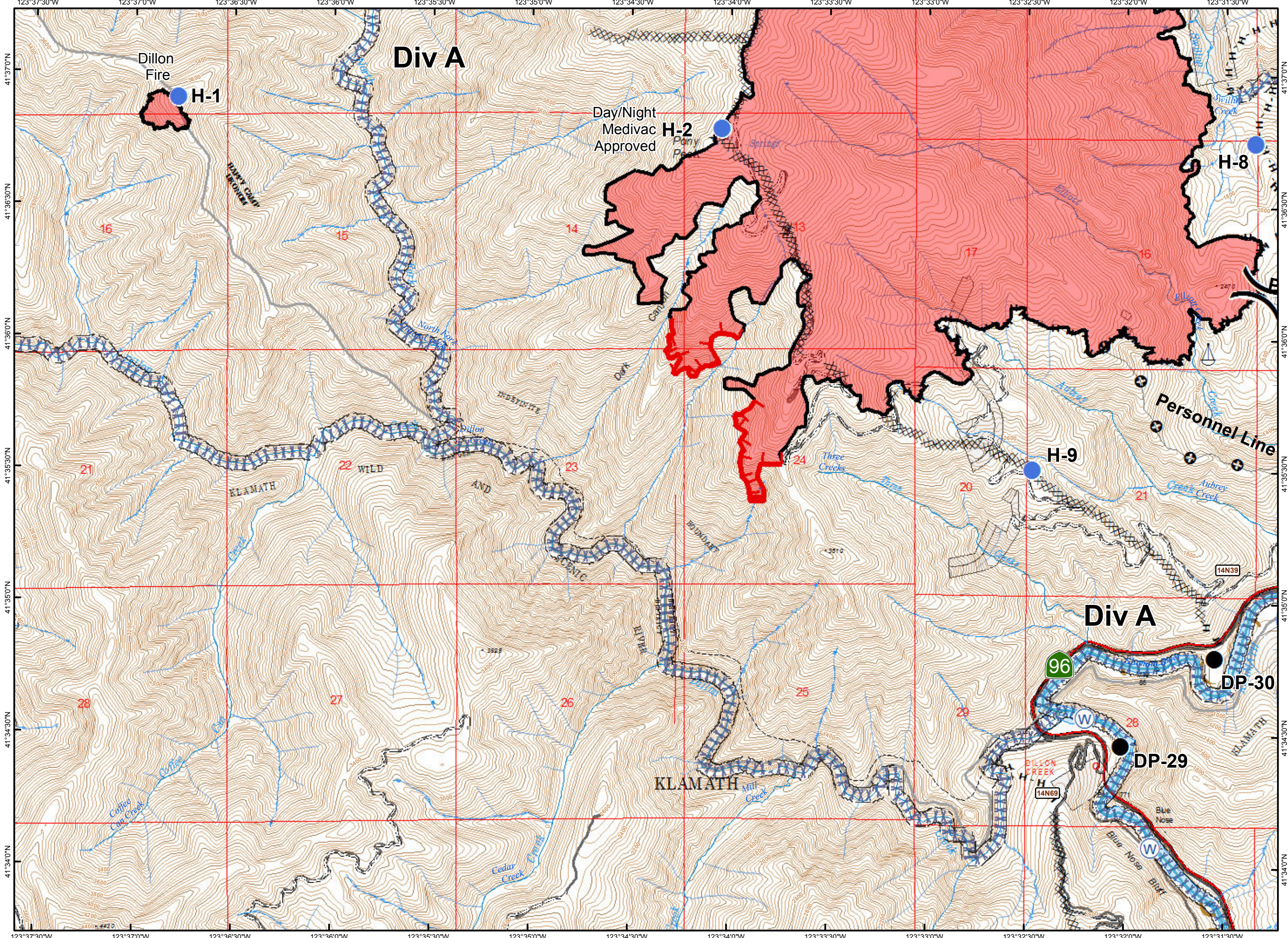
PONY INCIDENT
CA-KNF-004500
JULY 9, 2016

PAGE 3 OF 7

- Drop Point
- Helispot
- ⚓ Sling Site
- Ⓜ Water Source
- ▬ Uncontrolled Fire Edge
- XXXX Completed Dozer Line
- ▬ Completed Line
- H · H Hand Line
- ⊕ Personnel Line
-) Division Break
- Minor Streams
- Major Streams
- Rivers
- XXX Screen Only Drafting
- Non-USFS Owner



NAD 83

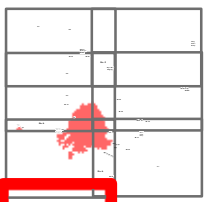


IAP MAP

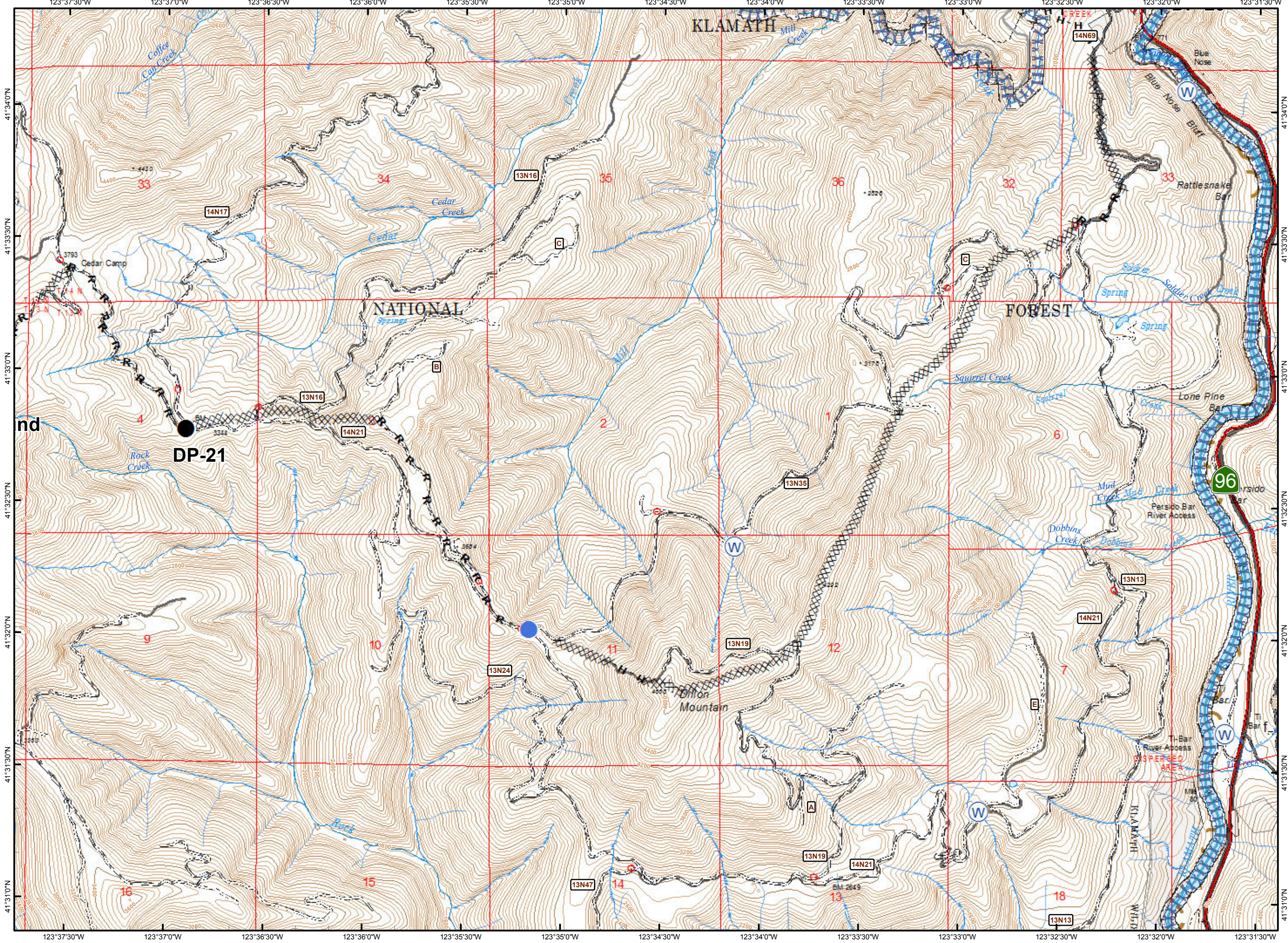
PONY INCIDENT
CA-KNF-004500
JULY 9, 2016

PAGE 4 OF 7

- Drop Point
- Helispot
- Ⓜ Water Source
- XXXX Completed Dozer Line
- H · H Hand Line
- R · R Road as Completed Line
- () Division Break
- Minor Streams
- Major Streams
- Rivers
- XXX Screen Only Drafting
- Non-USFS Owner










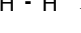







NAD 83



IAP MAP

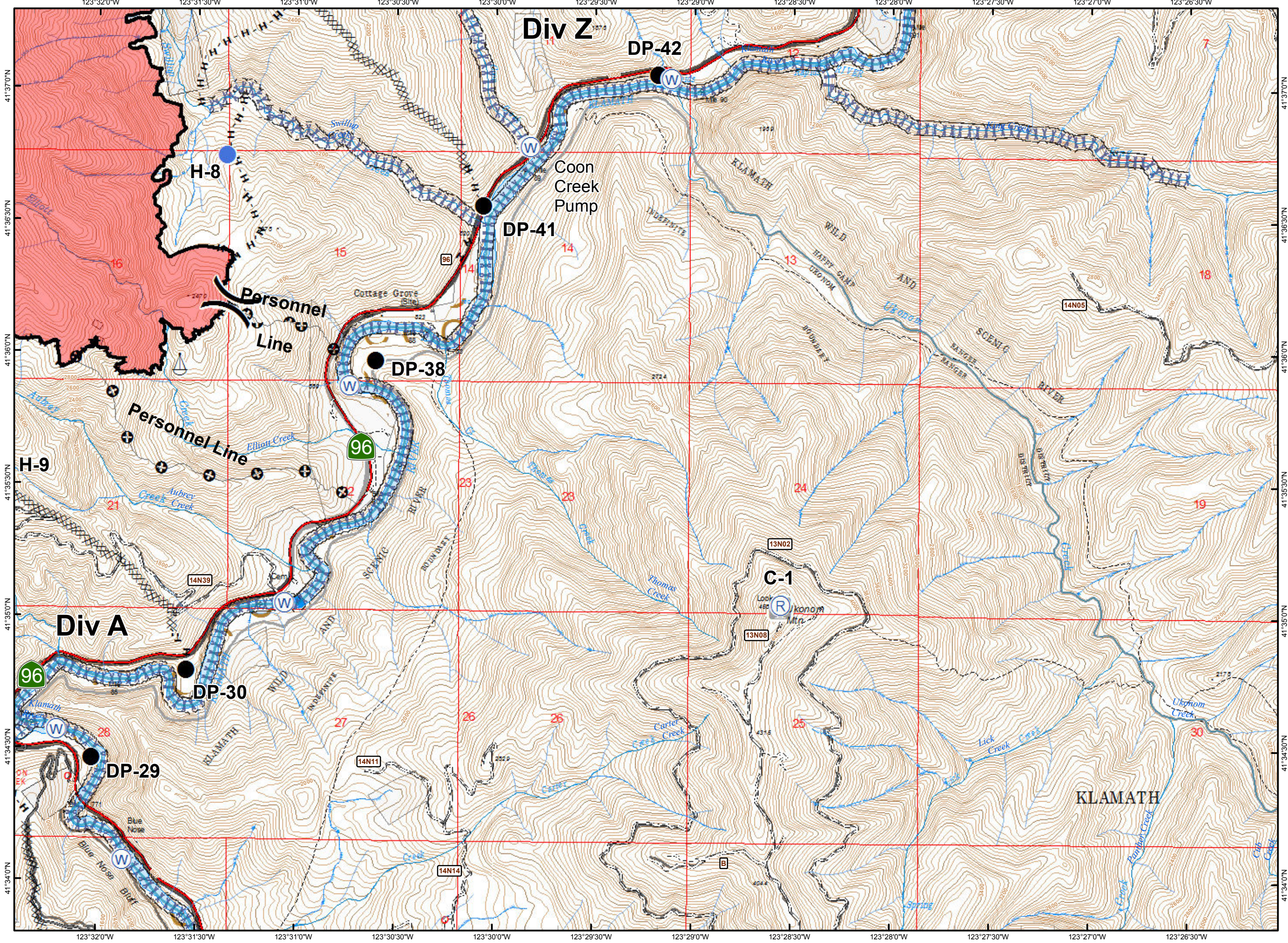
PONY INCIDENT
CA-KNF-004500
JULY 9, 2016

PAGE 5 OF 7

-  Drop Point
-  Helispot
-  Repeater
-  Sling Site
-  Water Source
-  Completed Dozer Line
-  Completed Line
-  Hand Line
-  Personnel Line
-  Division Break
-  Minor Streams
-  Major Streams
-  Rivers
-  Screen Only Drafting
-  Non-USFS Owner





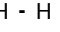

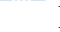




NAD 83
0 0.5
MILES

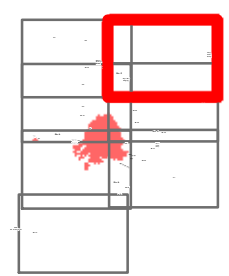


IAP MAP

PONY INCIDENT
CA-KNF-004500
JULY 9, 2016

PAGE 7 OF 7

-  Staging Area
-  Water Source
-  Completed Dozer Line
-  Hand Line
-  Division Break
-  Crawford Project Unit
-  Minor Streams
-  Major Streams
-  Rivers
-  Screen Only Drafting
-  Non-USFS Owner



NAD 83

