

123°34'W

123°33'W

123°32'W

Pony Fire
 Heat Acres: 890
 CA-KNF-004500
 Infrared Interpretation
 Imagery Date:
 06/10/2016 0108 Hrs



1:15,000



41°38'N

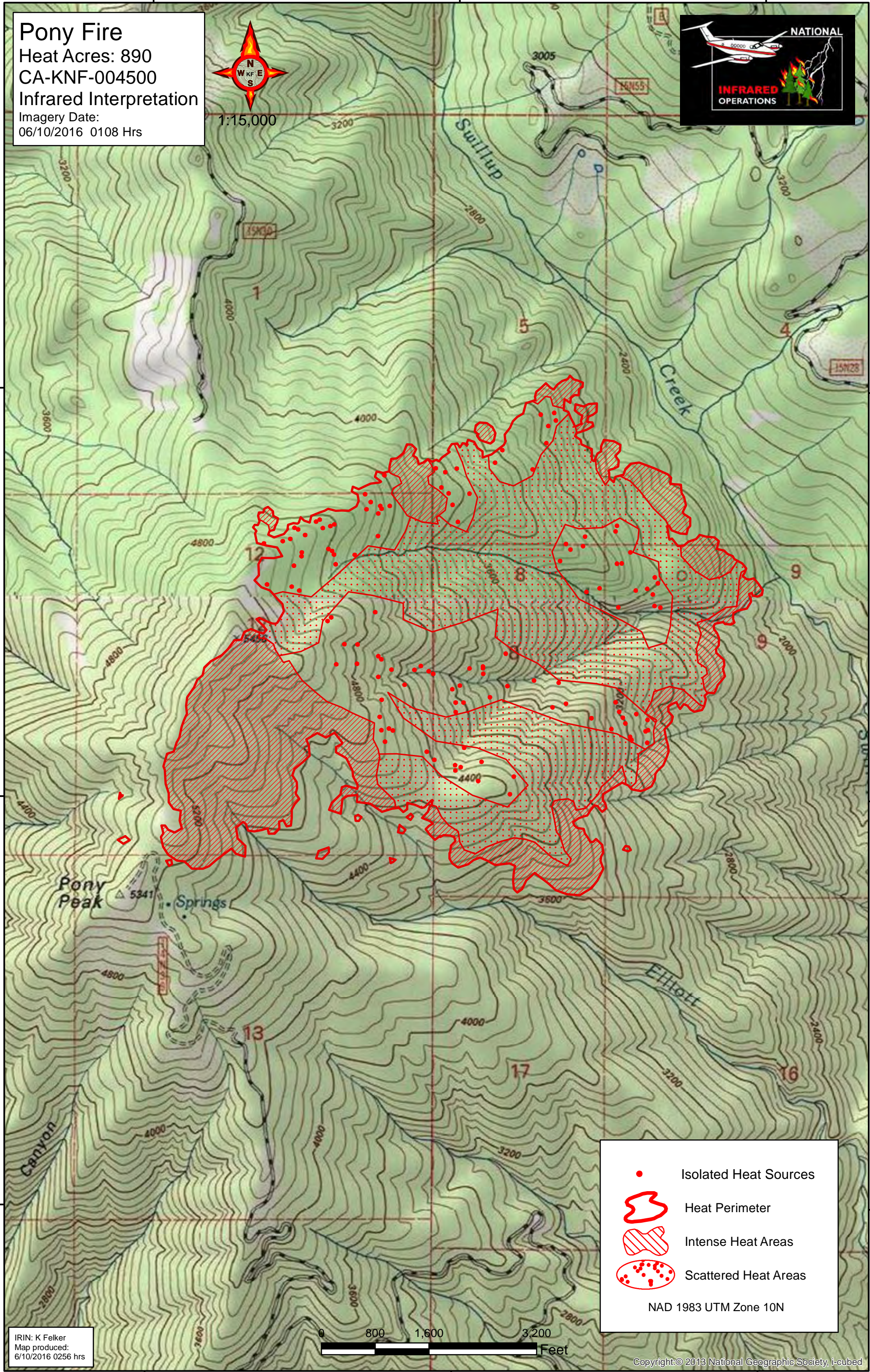
41°38'N





41°37'N

41°37'N

41°36'N

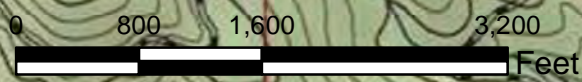
41°36'N



-  Isolated Heat Sources
-  Heat Perimeter
-  Intense Heat Areas
-  Scattered Heat Areas

NAD 1983 UTM Zone 10N

IRIN: K Felker
 Map produced:
 6/10/2016 0256 hrs



123°34'W

123°33'W

123°32'W