

123°34'W

123°33'W

123°32'W

# Pony Fire

Heat Acres: 1,652

CA-KNF-004500

Infrared Interpretation

Imagery Date:

06/12/2016 0058 Hrs



1:16,000



41°38'N

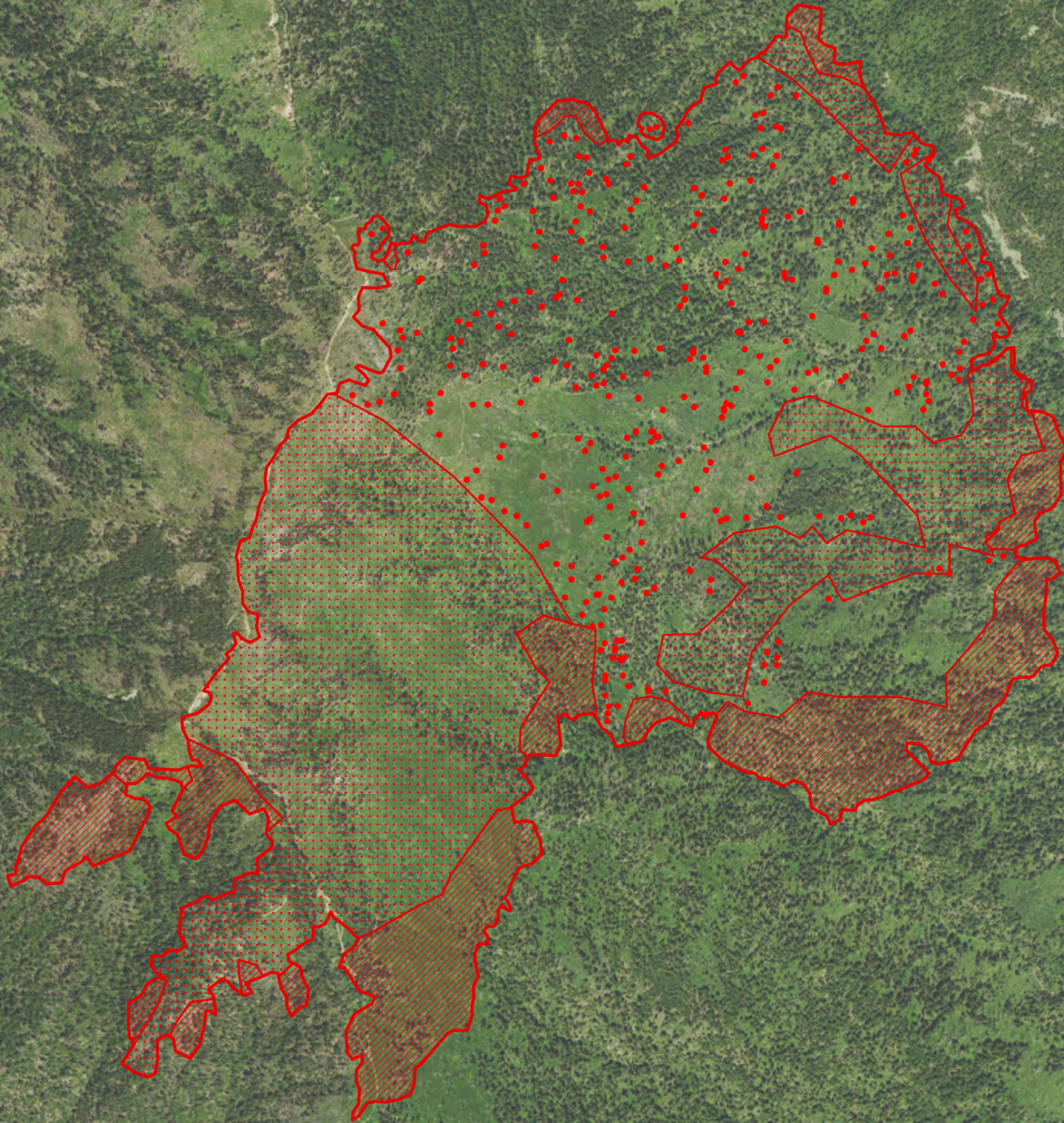
41°38'N





41°37'N

41°37'N

41°36'N

41°36'N



-  Isolated Heat Sources
-  Heat Perimeter
-  Intense Heat Areas
-  Scattered Heat Areas

NAD 1983 UTM Zone 10N

IRIN: K Felker  
Map produced:  
6/12/2016 1945 hrs



Map data provided by: GeoEye, Earthstar Geographics, CNES/Airbus DS, USDA, USGS, AEX, Getmapping, Aerogrid, IGN, IGP, swisstopo, and the GIS User Community

123°34'W

123°33'W

123°32'W