

123°35'W

123°34'W

123°33'W

123°32'W

123°31'W

Pony Fire

Heat Acres: 2,089

CA-KNF-004500

Infrared Interpretation

Imagery Date:
06/12/2016 2123 Hrs



1:24,000



41°39'N

41°38'N

41°37'N

41°36'N

41°35'N

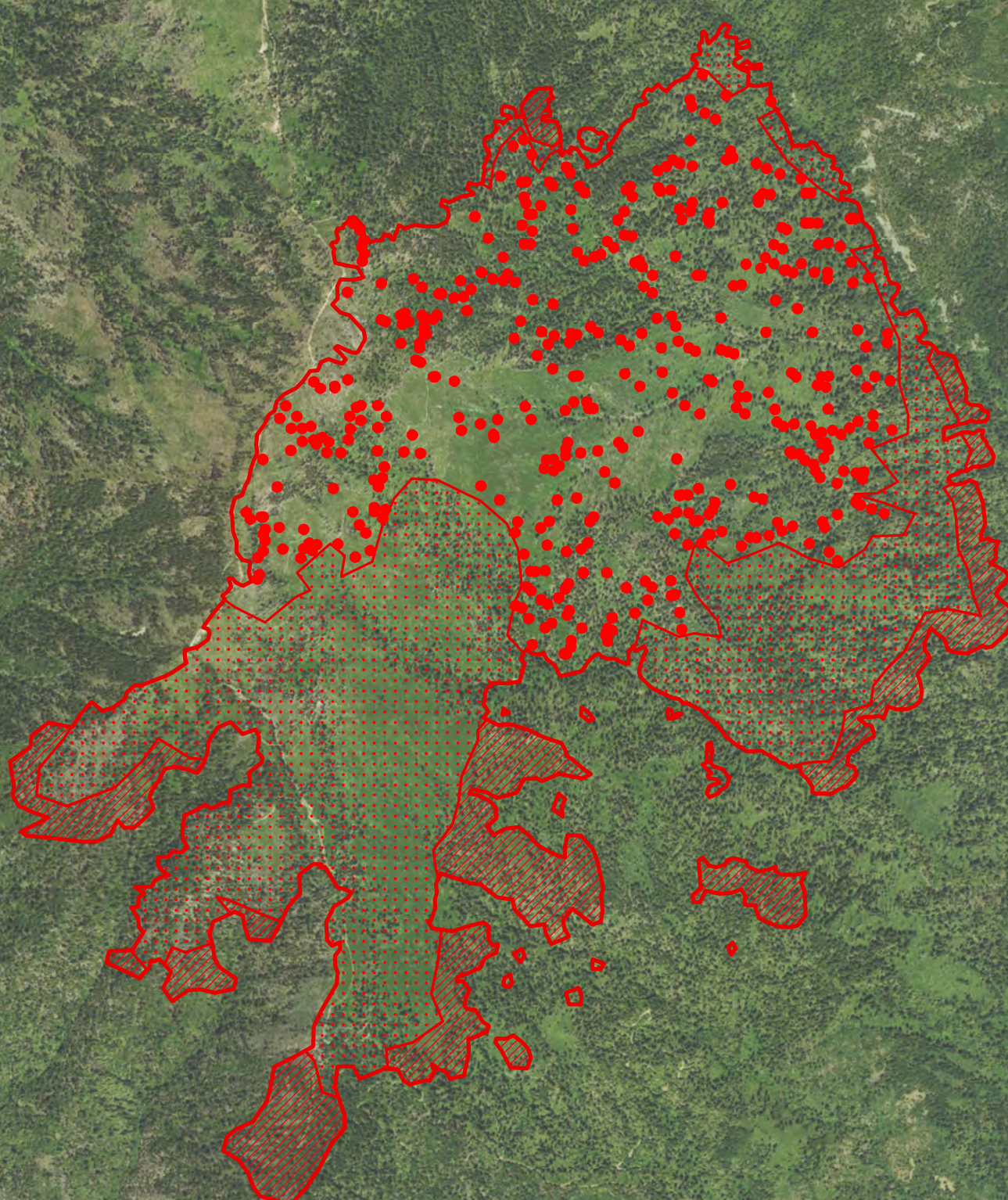
41°39'N





41°38'N

41°37'N

41°36'N

41°35'N



-  Isolated Heat Sources
-  Heat Perimeter
-  Intense Heat Areas
-  Scattered Heat Areas

NAD 1983 UTM Zone 10N

IRIN: K Felker
Map produced:
6/12/2016 2323 hrs



Map data provided by: GeoEye, Earthstar Geographics, CNES/Airbus DS, USDA, USGS, AEX, Getmapping, Aerogrid, IGN, IGP, swisstopo, and the GIS User Community

123°35'W

123°34'W

123°33'W

123°32'W

123°31'W