

123°35'W

123°34'W

123°33'W

123°32'W

123°31'W

Pony Fire

Heat Acres: 2,762 Revised

CA-KNF-004500

Infrared Interpretation

Imagery Date:
06/15/2016 2136 Hrs



1:24,000



41°39'N

41°39'N

41°38'N

41°38'N

41°37'N

41°37'N

41°36'N

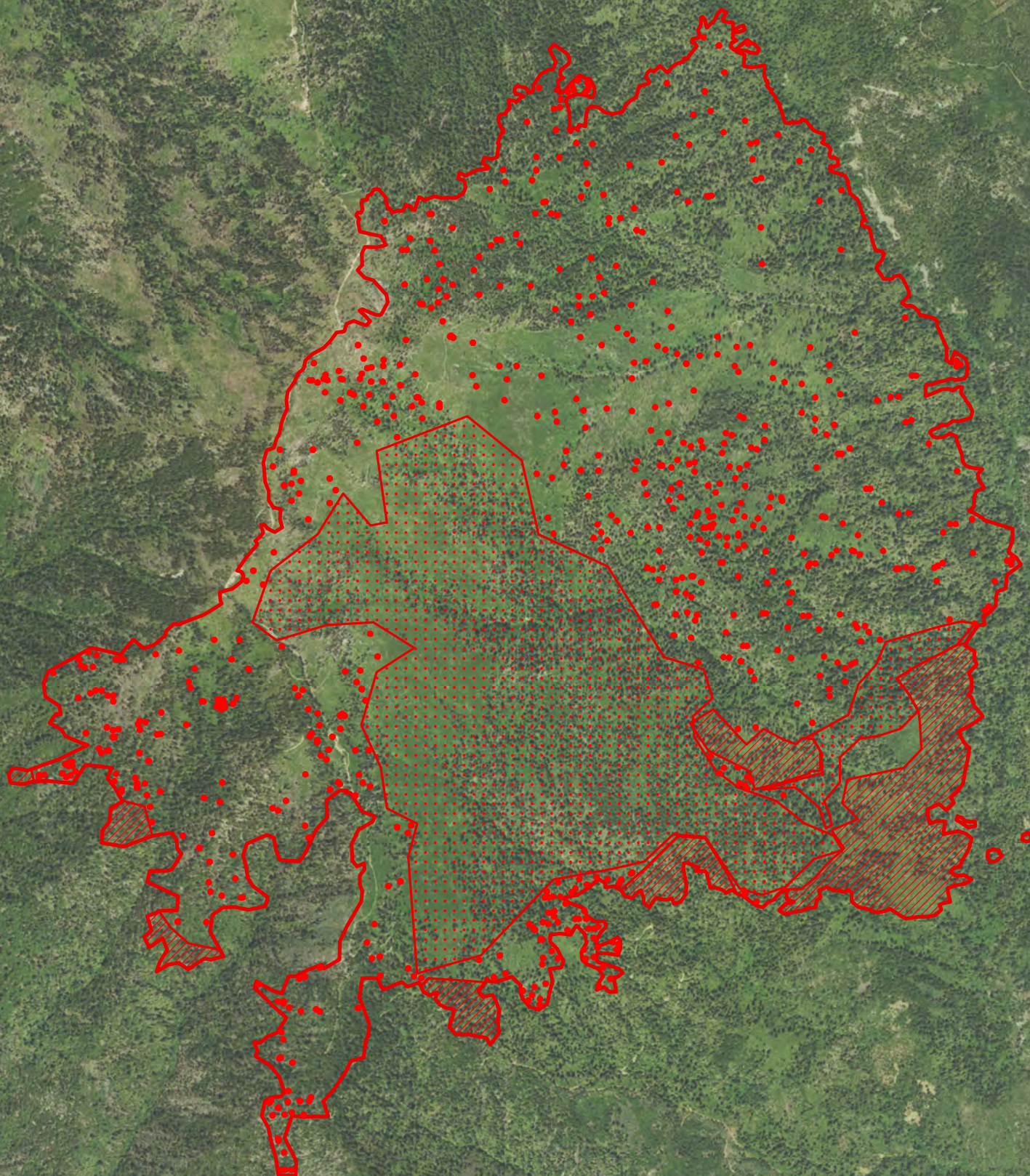
41°36'N





41°35'N

41°35'N

41°34'N

41°34'N



-  Isolated Heat Sources
-  Heat Perimeter
-  Intense Heat Areas
-  Scattered Heat Areas

NAD 1983 UTM Zone 10N

IRIN: K Felker
Map produced:
6/15/2016 1026 hrs



Map data provided by: GeoEye, Earthstar Geographics, CNES/Airbus DS, USDA, USGS, AEX, Getmapping, Aerogrid, IGN, IGP, swisstopo, and the GIS User Community

123°35'W

123°34'W

123°33'W

123°32'W

123°31'W