

123°35'W

123°34'W

123°33'W

123°32'W

123°31'W

**Pony Fire**  
 Heat Acres: 2,762 Revised  
 CA-KNF-004500  
 Infrared Interpretation  
 Imagery Date:  
 06/15/2016 2136 Hrs



41°39'N

41°38'N

41°37'N

41°36'N

41°35'N

41°34'N

41°39'N

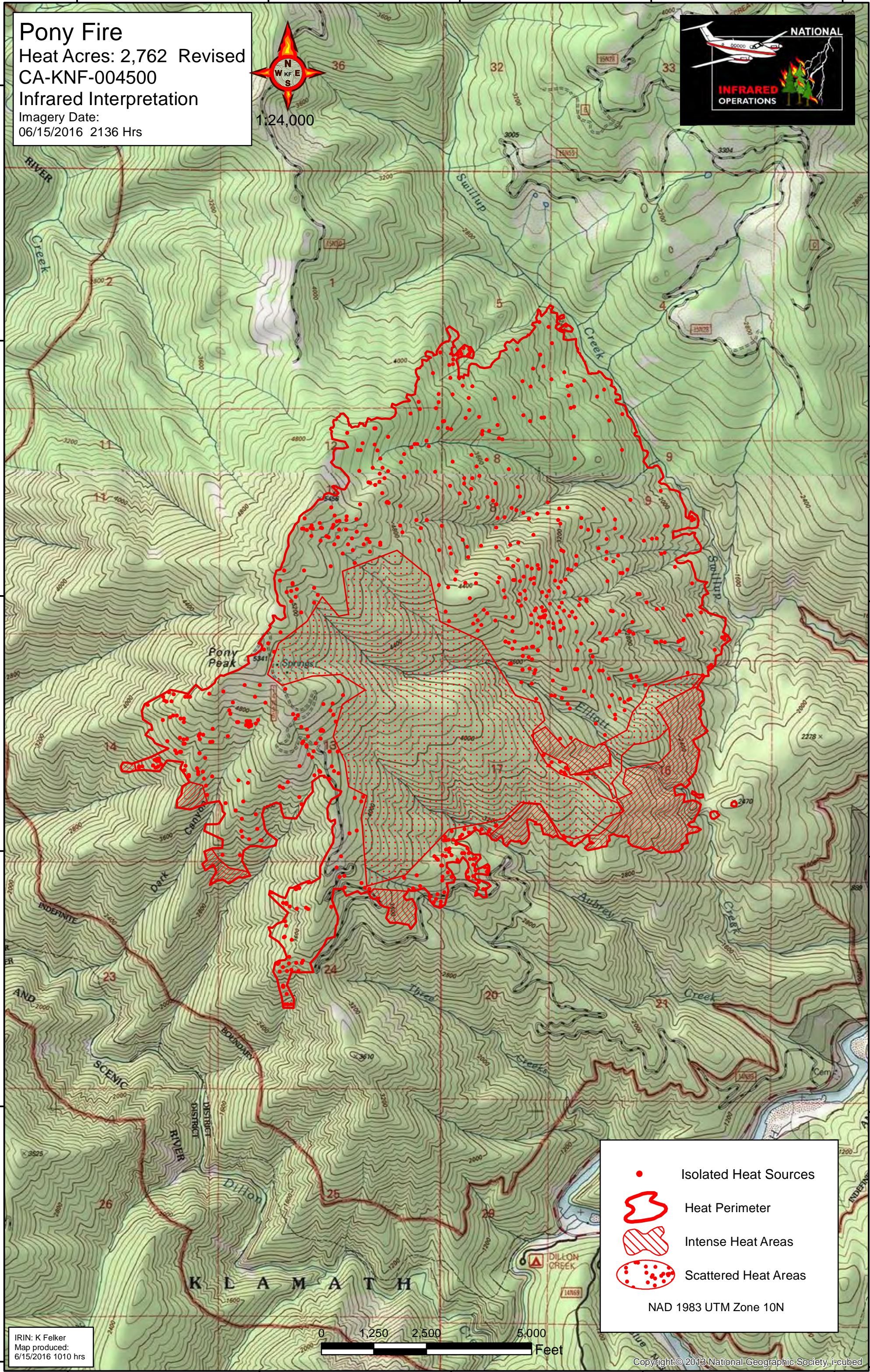
41°38'N





41°37'N

41°36'N

41°35'N

41°34'N



-  Isolated Heat Sources
-  Heat Perimeter
-  Intense Heat Areas
-  Scattered Heat Areas

NAD 1983 UTM Zone 10N

IRIN: K Felker  
 Map produced:  
 6/15/2016 1010 hrs



123°35'W

123°34'W

123°33'W

123°32'W

123°31'W